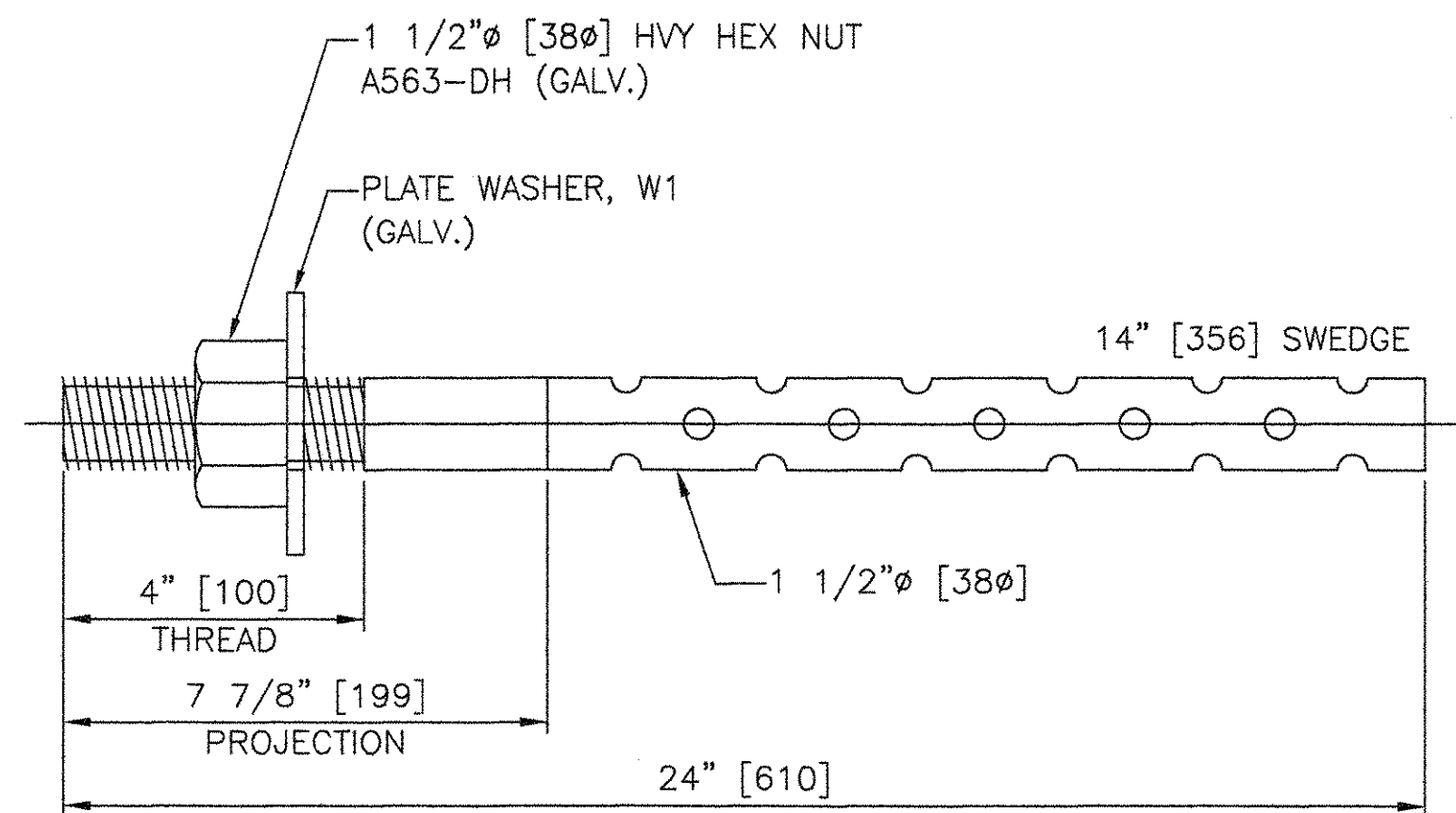
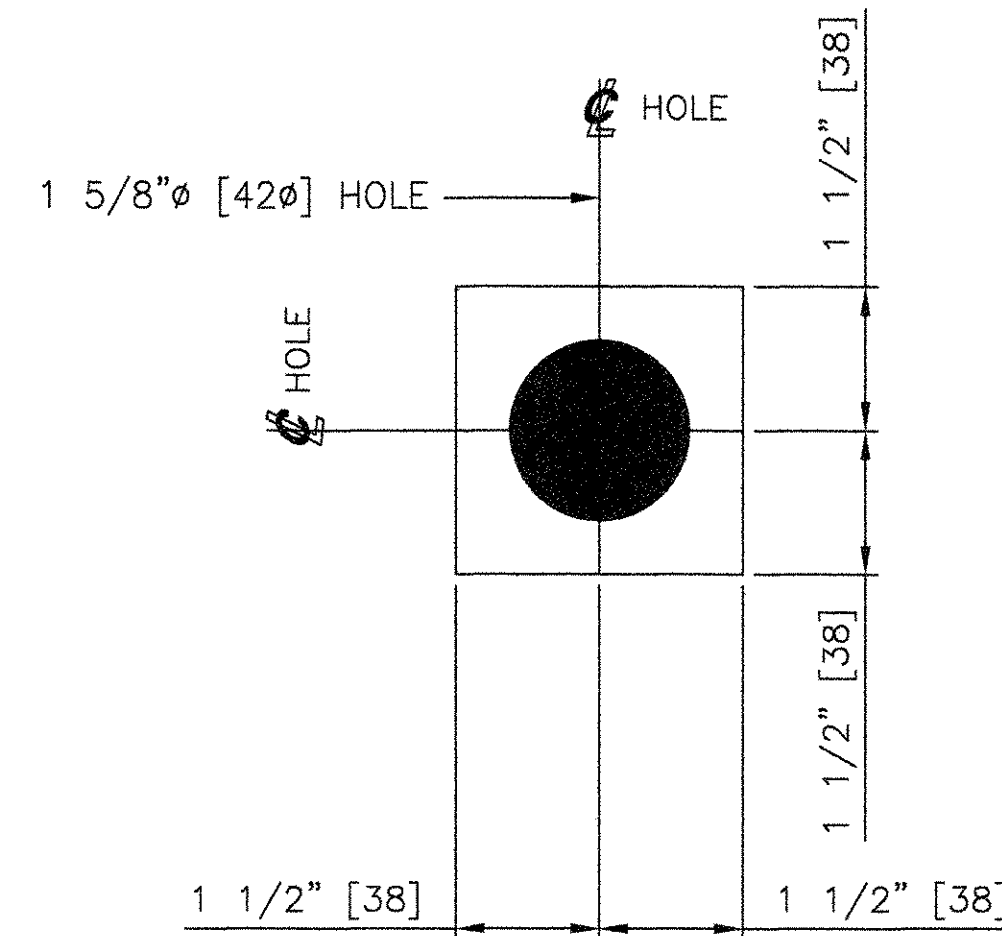


MARK	QTY	DESCRIPTION	IN	16ths	FAB MARK	MILL MARK	WEIGHT
AB1	10	RD 1 1/2"φ [38φ]	24 [610]	0	GALV.	F1554 GR. 55	120
W1	10	PL 3/8" [10] x 3" [75]	3 [75]	0	GALV.	.	10
AB2	10	RD 1 1/2"φ [38φ]	24 [610]	0	GALV.	F1554 GR. 55	120
W2	10	PL 3/8" [10] x 3" [75]	5 [140]	8	GALV.	.	18
.	20	1 1/2"φ [38φ] HVY HEX NUTS	.	.	GALV.	A563-DH	19

TOTAL WEIGHT IN LBS = 387

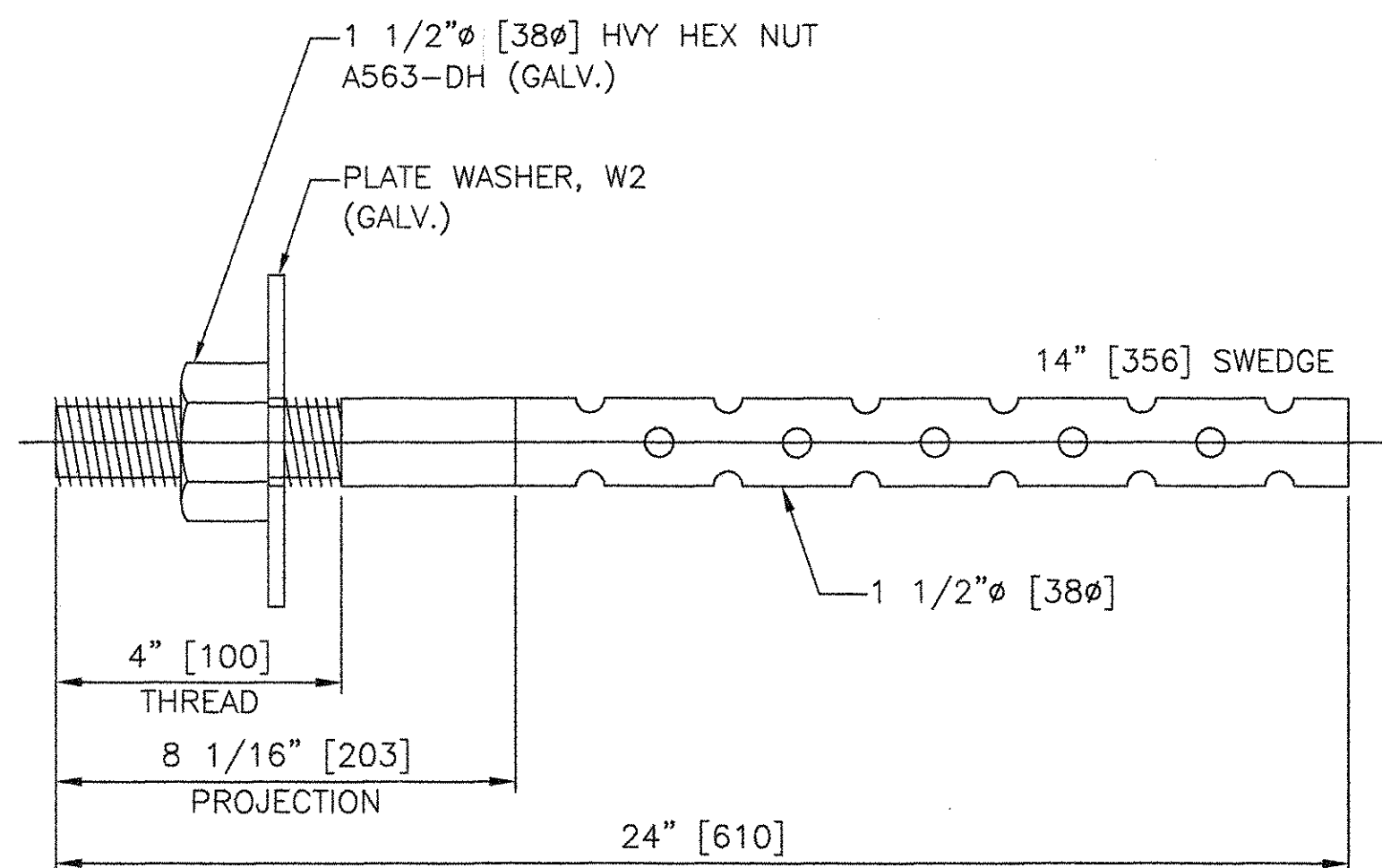


**10 ANCHOR BOLTS, AB1**  
RD 1 1/2"φ [38φ] x 24" [610]  
F1554 GR. 55 (GALV.)  
MIN EMBED: 15" [380]  
LOCATE AT  
ABUTMENT 1

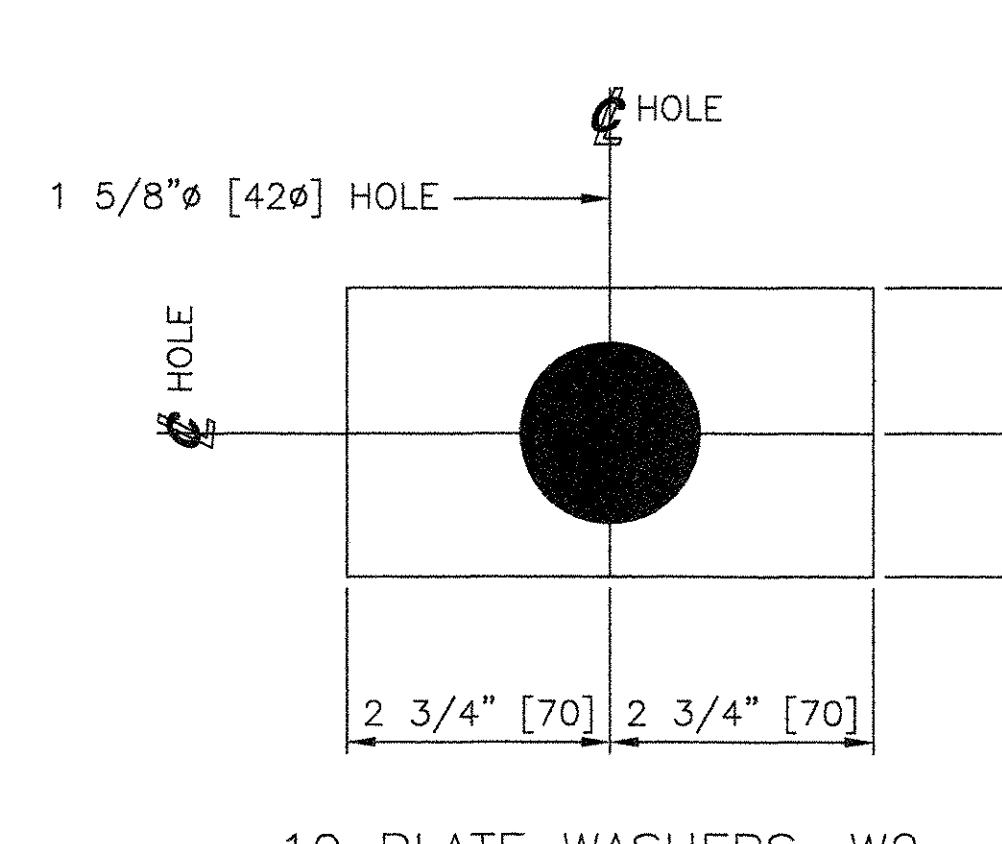


**10 PLATE WASHERS, W1**  
PL 3/8" [10] x 3" [75] x 3" [75]  
(GALV.)  
USE WITH  
ANCHOR BOLT, AB1

ENGLISH EQUIVALENT MATERIAL FURNISHED.  
METRIC EQUIVALENT IN PARENTHESIS.



**10 ANCHOR BOLTS, AB2**  
RD 1 1/2"φ [38φ] x 24" [610]  
F1554 GR. 55 (GALV.)  
MIN EMBED: 15" [380]  
LOCATE AT  
ABUTMENT 2



**10 PLATE WASHERS, W2**  
PL 3/8" [10] x 3" [75] x 5 1/2" [140]  
(GALV.)  
USE WITH  
ANCHOR BOLT, AB2

SEE SHEET 1 FOR SHOP NOTES.

STATE OF VERMONT  
AGENCY OF TRANSPORTATION  
PROJECT NAME: MENDON  
PROJECT NO. BRO 1443(35)  
FWW JOB NO. 61000

RECEIVED  
OK'D BY: JIR  
MAR 09 2006  
BY: WJ  
DATE: 3/10/06

COSMEC, INC. 70 SOUTH STREET WALPOLE, MA. 02081

SCALE: NONE DRAWN BY: JEP CHECKED BY: PJM  
SHEET 3 OF 3 DATE: 03/06 DATE: 03/06

COSMEC BEARING

CUSTOMER: FRANK W. WHITCOMB CONSTRUCTION CORPORATION S.O. NUMBER: 60520 DRAWING NUMBER: 4676 REV: 0

09765