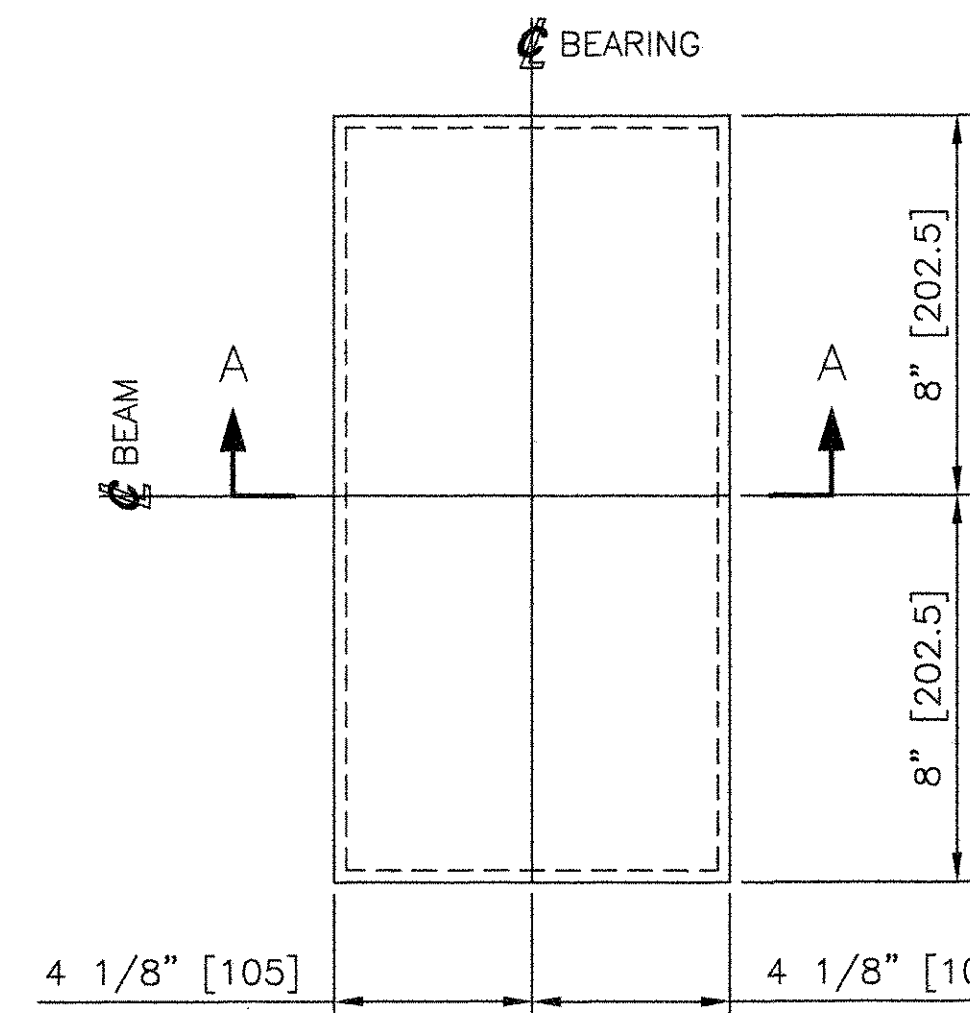
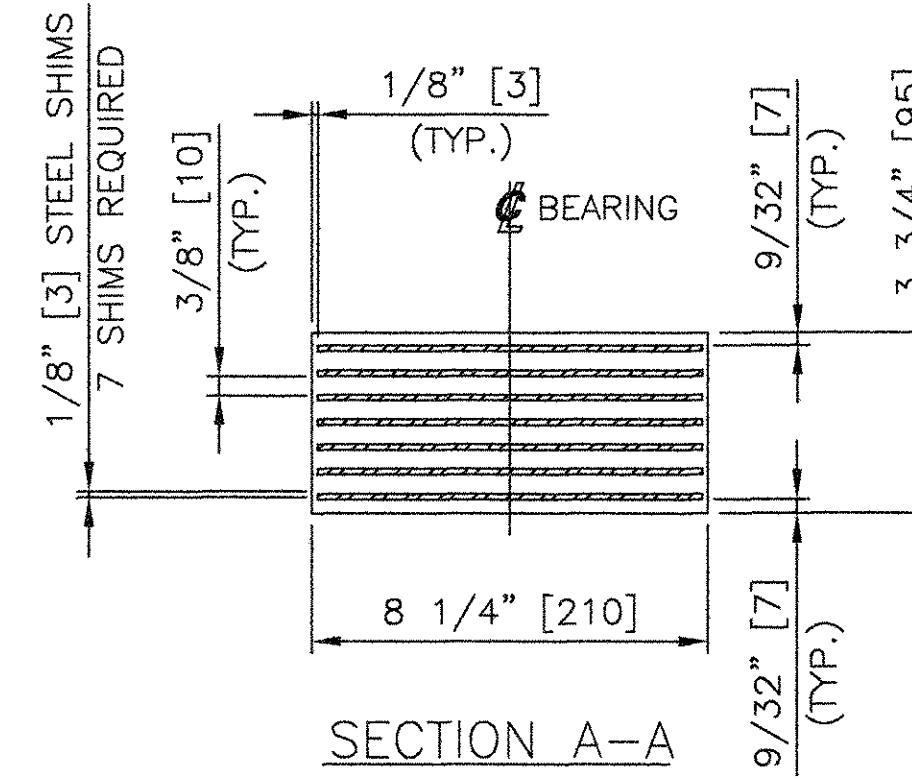


MARK	QTY	DESCRIPTION	IN	16ths	FAB MARK	MIL MARK	WEIGHT
FBA-1	5	FIXED BEARING ASSEMBLIES					
SP1	5	PL 1 1/4" [32] x 10 1/4" [260]	25 [650]	9		METALIZED	290
EB1	5	LAM. ELAST. PAD 3 3/4" [95] x 8 1/4" [210]	16 [405]	0		60 DURO. GR. 4 NEOPRENE	245
TOTAL =							535

ENGLISH EQUIVALENT MATERIAL FURNISHED.  
METRIC EQUIVALENT IN PARENTHESIS.

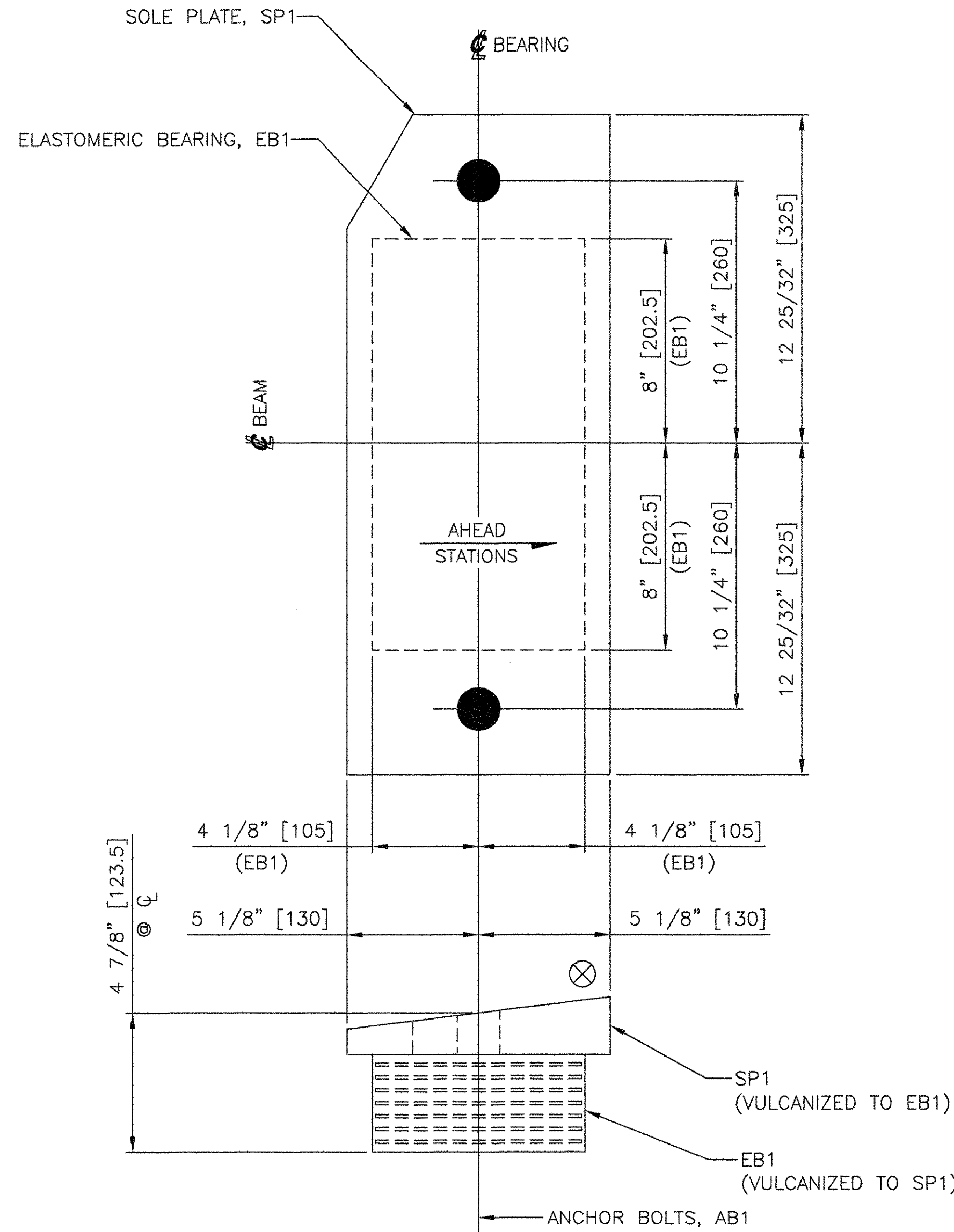
**SHOP NOTES:**

- SOLE PLATES: M270, GR. 345.
- ELASTOMER: 60 DUROMETER, GRADE 4 NEOPRENE WITH A SHEAR MODULUS BETWEEN 0.895 MPa AND 1.172 MPa.
- SHIMS: ASSHTO M270, GR. 250 OR EQUIVALENT.
- ANCHOR BOLTS: F1554, GR. 55, GALVANIZED.
- PLATE WASHERS: M270 GR. 345 OR EQUIVALENT, GALVANIZED.
- MATERIAL NOTED AS M270, GR. 345 MAY BE AASHTO M270, GR. 345, ASTM A709, GR. 50, OR ASTM A572, GR. 50.
- SOLE PLATES SHALL BE VULCANIZED TO ELASTOMERIC BEARINGS.
- ALL FREE EDGES OF PLATES TO BE METALIZED SHALL BE ROUNDED TO 1/16" RADIUS.
- SOLE PLATES SHALL BE BLAST CLEANED TO SSPC-SP5, "WHITE METAL" AND METALIZED IN ACCORDANCE WITH AWS C 2.18, TO A MINIMUM THICKNESS OF 6 MILS WITH 99.9% PURE ZINC AND SEALED WITH #90290 METCO ALS.
- COSMEC, INC. WILL BLAST THE MATERIAL AND APPLY THE REQUIRED COATING IN ACCORDANCE WITH THE MANUFACTURER'S RECOMMENDATIONS AND IN ACCORDANCE WITH ALL APPLICABLE STANDARD SPECIFICATIONS AND SPECIAL PROVISIONS. COSMEC, INC. WILL PACKAGE AND LOAD THE BEARINGS FOR SHIPMENT IN SUCH A MANNER AS TO INSURE NO DAMAGE IS DONE TO THE COATING. ANY DAMAGE TO THE COATING IN THE FIELD IS THE SOLE RESPONSIBILITY OF THE CONTRACTOR AND IS TO BE REPAIRED AT THE CONTRACTOR'S EXPENSE.
- MATERIAL NOTED AS GALVANIZED SHALL BE GALVANIZED IN ACCORDANCE WITH AASHTO M111 (ASTM A123) OR AASHTO M232 (ASTM A153) AS APPLICABLE.
- FABRICATION TOLERANCES SHALL BE IN ACCORDANCE WITH SECTION 531.04.d OF THE 2001 VERMONT STANDARD SPECIFICATION FOR CONSTRUCTION.
- ALL SURFACES OF PLATES SHALL BE SMOOTH AND STRAIGHT.
- ⊗ SHOP TO MARK HIGH SIDE OF PLATE.
- COSMEC, INC. REPRESENTATIVE: MR. MATT McANDREWS (508) 668-6600



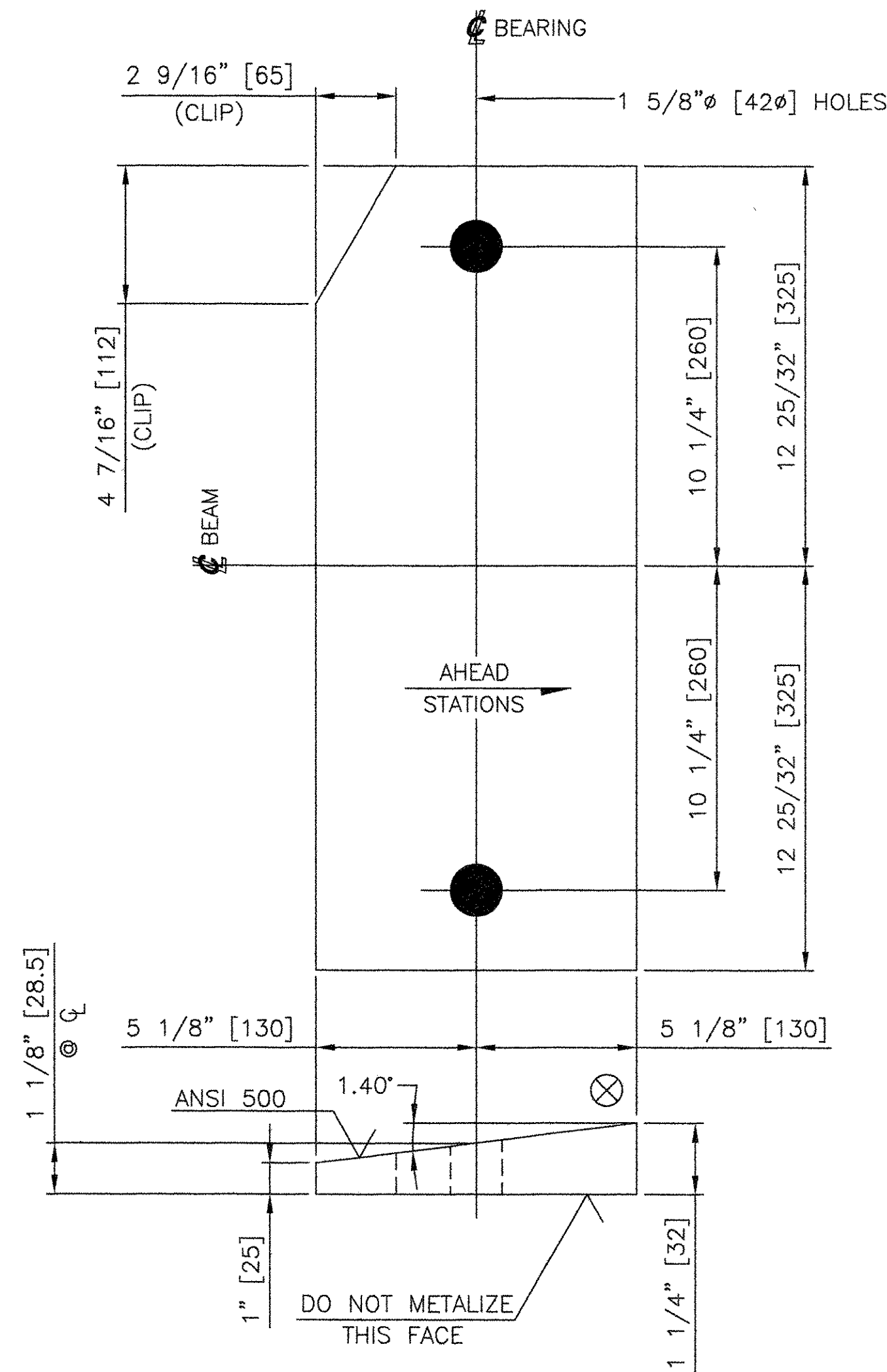
**5 ELASTOMERIC BEARINGS, EB1**  
LAMINATED ELASTOMERIC PAD 3 3/4" [95] x 8 1/4" [210] x 16" [405]  
ELASTOMER - 60 DUROMETER, GRADE 4 NEOPRENE WITH A SHEAR MODULUS BETWEEN 0.895 MPa AND 1.172 MPa (129.81 psi and 169.98 psi)  
SHIMS - M270, GR. 250 OR EQUIVALENT  
VULCANIZED TO SOLE PLATE, SP1  
USE WITH  
FIXED BEARING ASSEMBLY, FBA-1

STRUCTURE'S COPY



**5 FIXED BEARING ASSEMBLIES, FBA-1**

LOCATE AT  
ABUTMENT 1  
GIRDERS 1 THRU 5



**5 FIXED SOLE PLATES, SP1**  
PL 1 1/4" [32] x 10 1/4" [260] x 25 9/16" [650]  
(METALIZED)  
VULCANIZED TO ELASTOMERIC BEARING, EB1  
USE WITH  
FIXED BEARING ASSEMBLY, FBA-1

RECEIVED  
MAR 09 2006  
APPROVED: [Signature]  
DATE: 3/24/06

STATE OF VERMONT  
AGENCY OF TRANSPORTATION  
PROJECT NAME: MENDON  
PROJECT NO. BRO 1443(35)  
FWW JOB NO. 61000

COSMEC, INC. 70 SOUTH STREET WALPOLE, MA. 02081

SCALE: NONE DRAWN BY: JEP CHECKED BY: PJM  
SHEET 1 OF 3 DATE: 03/06 DATE: 03/06

COSMEC BEARING

CUSTOMER: FRANK W. WHITCOMB CONSTRUCTION CORPORATION S.O. NUMBER: 60520 DRAWING NUMBER: 4674 REV: 0

REV.	BY	DATE	CHK'D BY	DATE
-	-	-	-	-

095bb