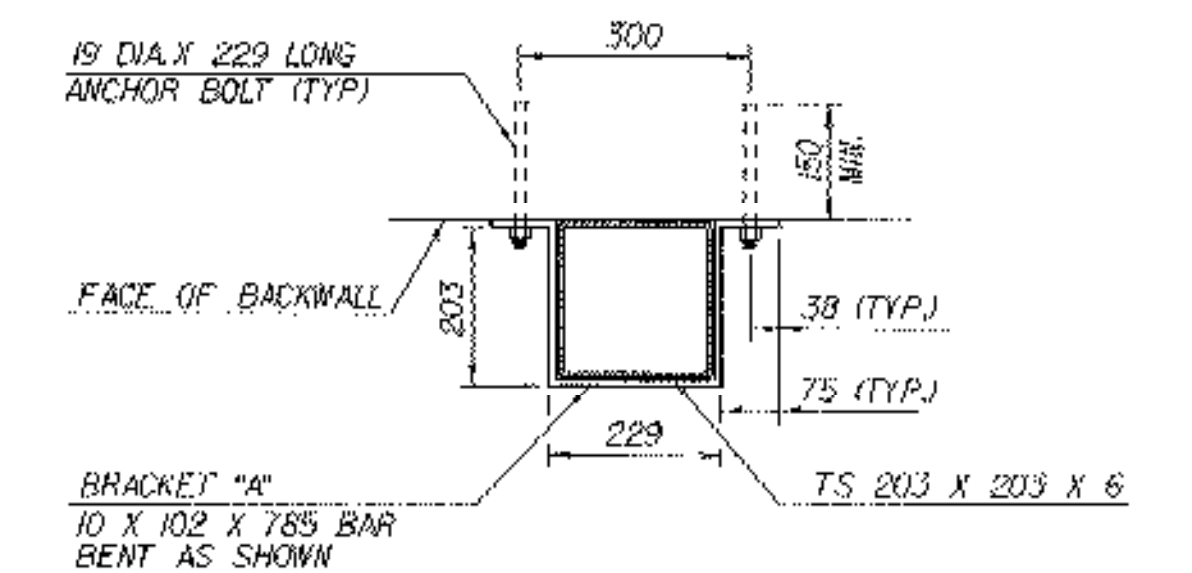
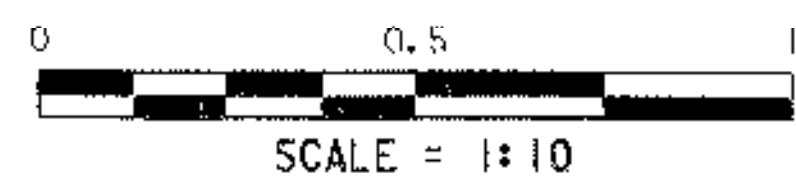
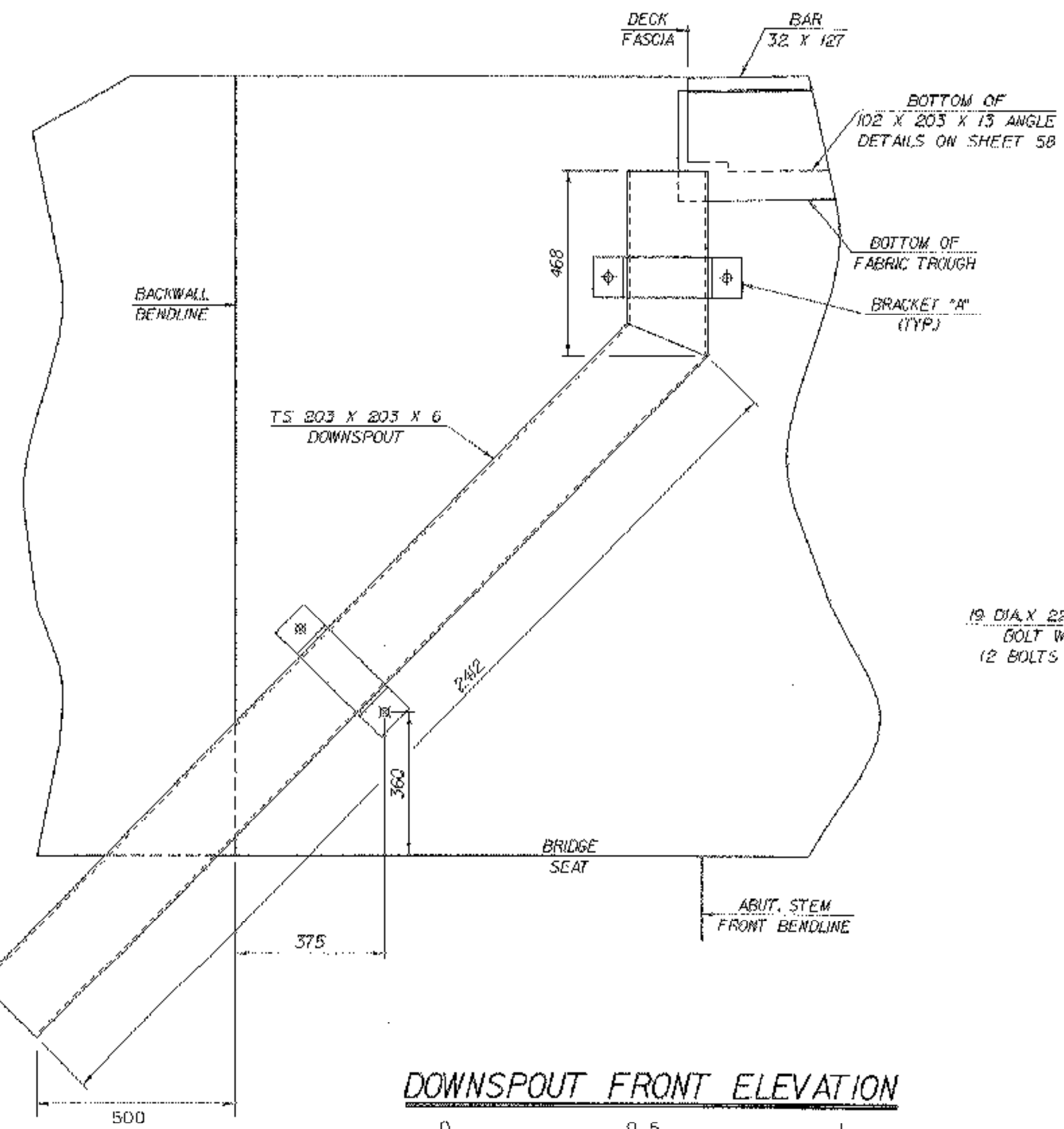
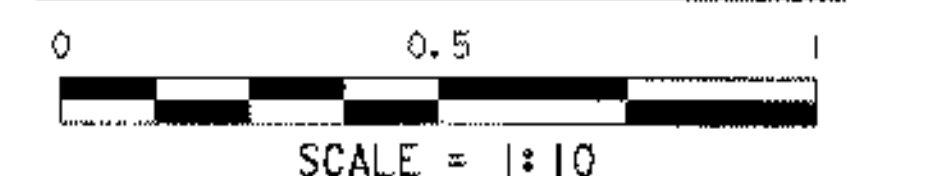


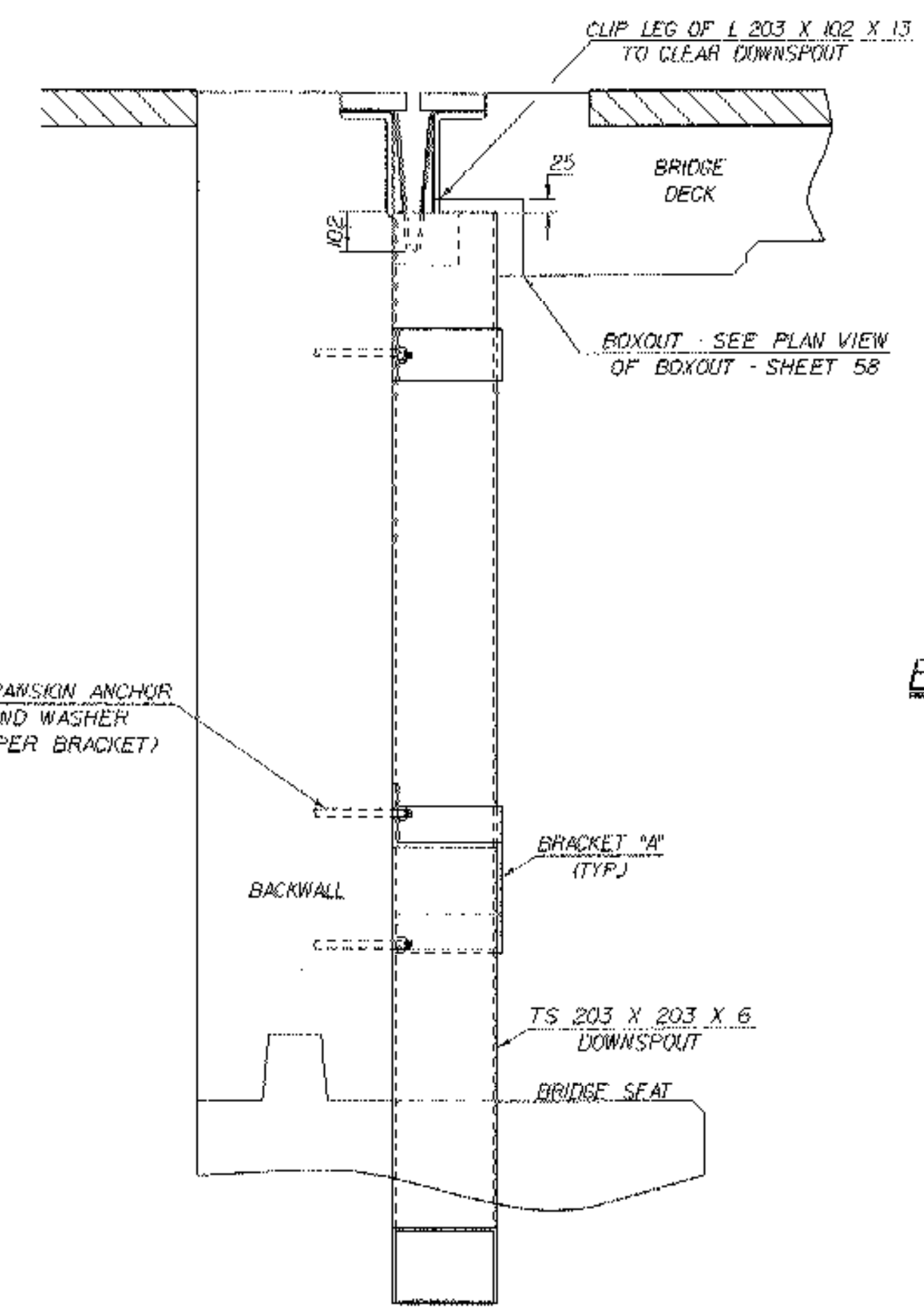
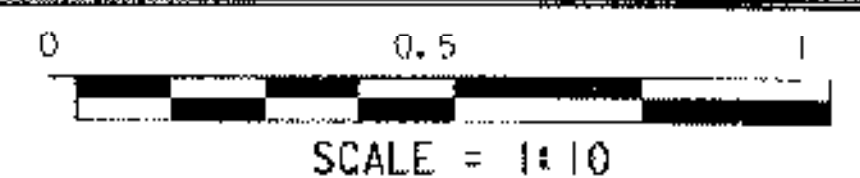
EXPANSION JOINT PLAN



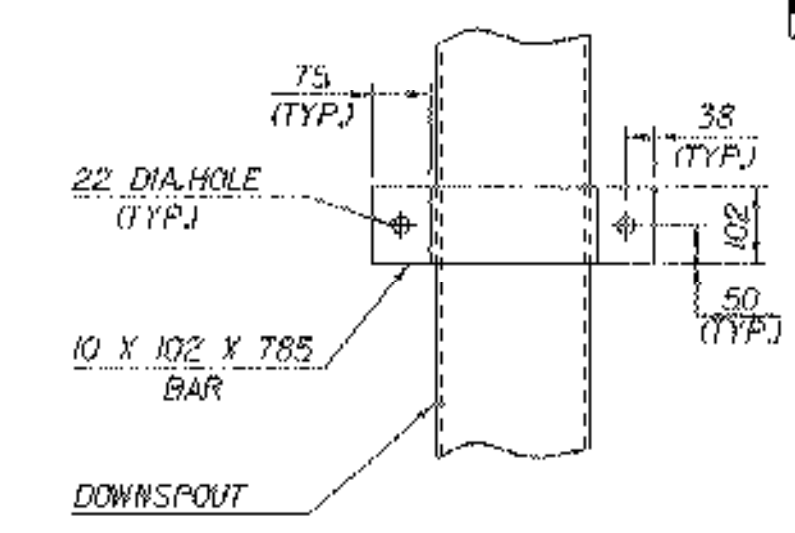
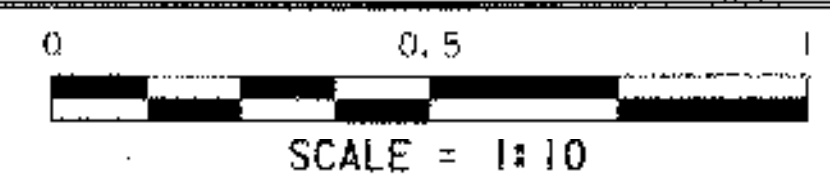
DETAILS FOR ATTACHING DOWNSPOUT TO BACKWALL



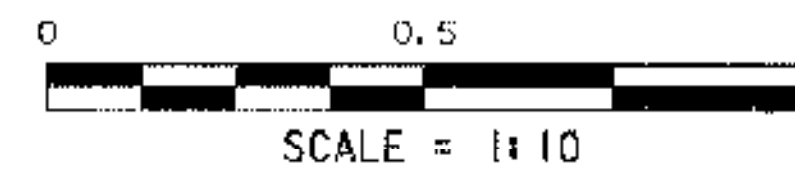
DOWNSPOUT FRONT ELEVATION



DOWNSPOUT SIDE ELEVATION



ELEVATION VIEW OF BRACKET "A"



DOWNSPOUT NOTES

1. HOLLOW STRUCTURAL STEEL TUBING SHALL CONFORM TO ASTM A-500 OR ASTM A-501.
2. ALL PLATES, BARS, AND ANGLES SHALL CONFORM TO ASTM A109/A109M, GRADE 250.
3. ALL PARTS SHALL BE GALVANIZED AFTER FABRICATION IN ACCORDANCE WITH AASHTO M11, EXCEPT THAT HARDWARE MEET REQUIREMENTS OF AASHTO M252M.
4. ANY PLACE WHERE THE GALVANIZING HAS BEEN REMOVED FROM THE DOWNSPOUT EITHER BY CUTTING, BURNING, WELDING, PLACING, OR ANY OTHER MEANS, IT SHALL BE REPAIRED IN ACCORDANCE WITH SUPPLEMENTAL SPECIFICATION 513.06(1).
5. DOWNSPOUT AND ALL ANCHOR BOLTS WITH RELATED HARDWARE SHALL BE PAID FOR UNDER THE ITEM 506.55 "STRUCTURAL STEEL (PLATE GIRDER)".

HOPPER & DOWNSPOUT DETAILS

PROJECT NAME:	MENDON
PROJECT NUMBER:	BRO 1443 (35)
FILE NAME:	/str5/95j290/sj290exp.dgn
PROJECT LEADER:	C. KELLER
DESIGNED BY:	M. EVANS-MONGEON
PLOT DATE:	18-NOV-2005
DRAWN BY:	K. RUTTER
CHECKED BY:	T. SUMNER
SHEET	59 OF 94