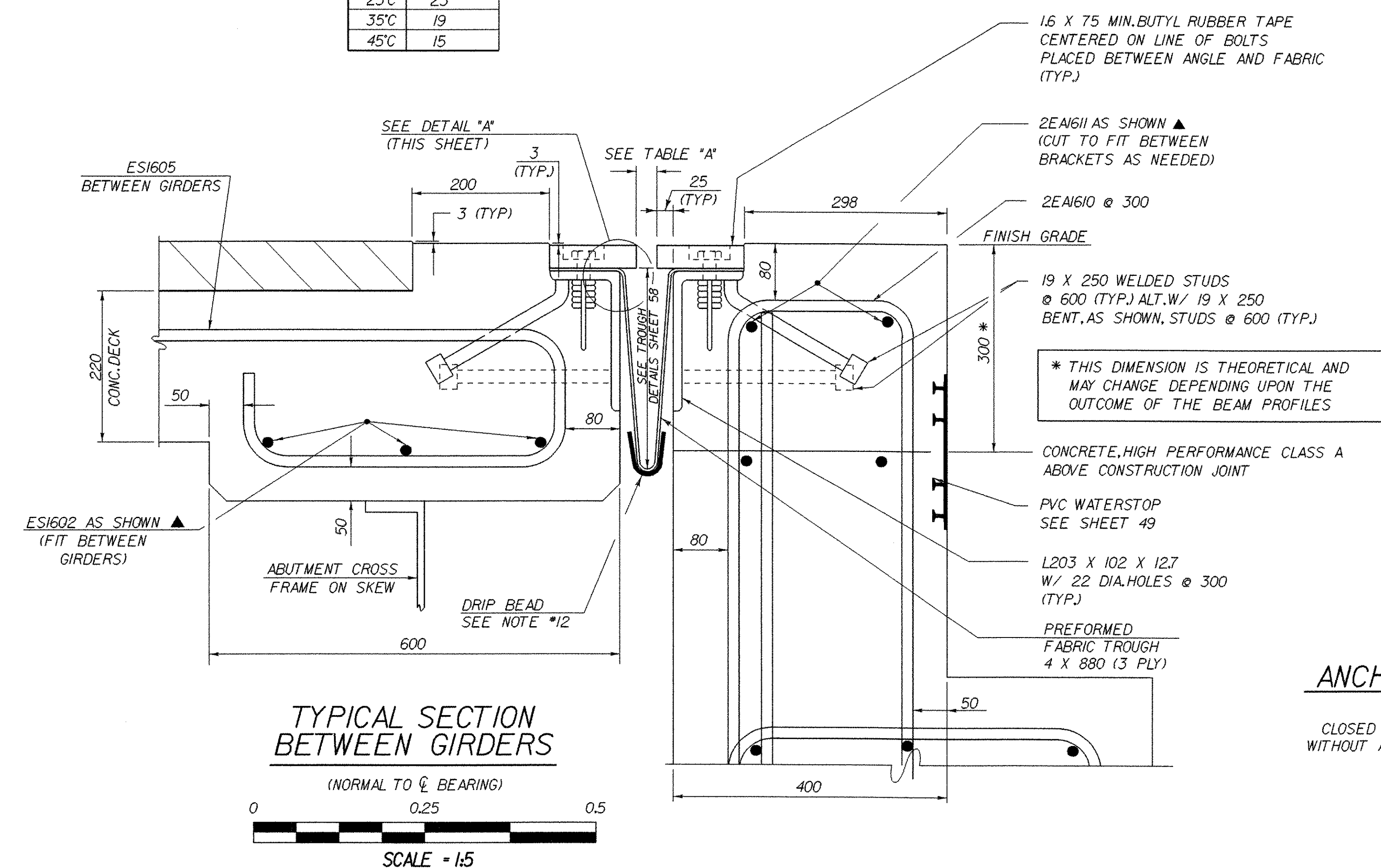


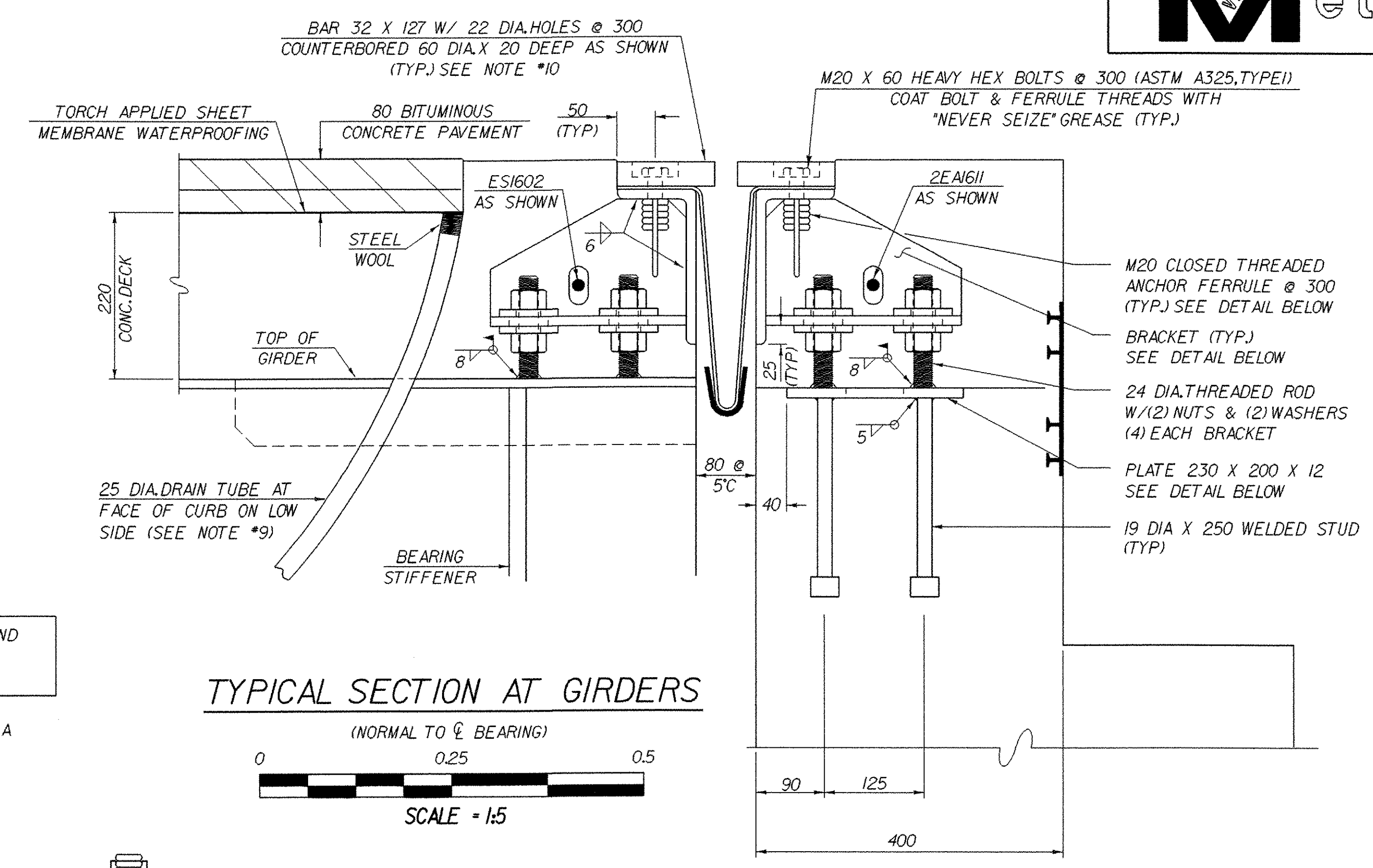
**TABLE "A"**

TEMP	"A" DIST.
-25°C	42
-15°C	38
-5°C	34
5°C	30
15°C	27
25°C	23
35°C	19
45°C	15

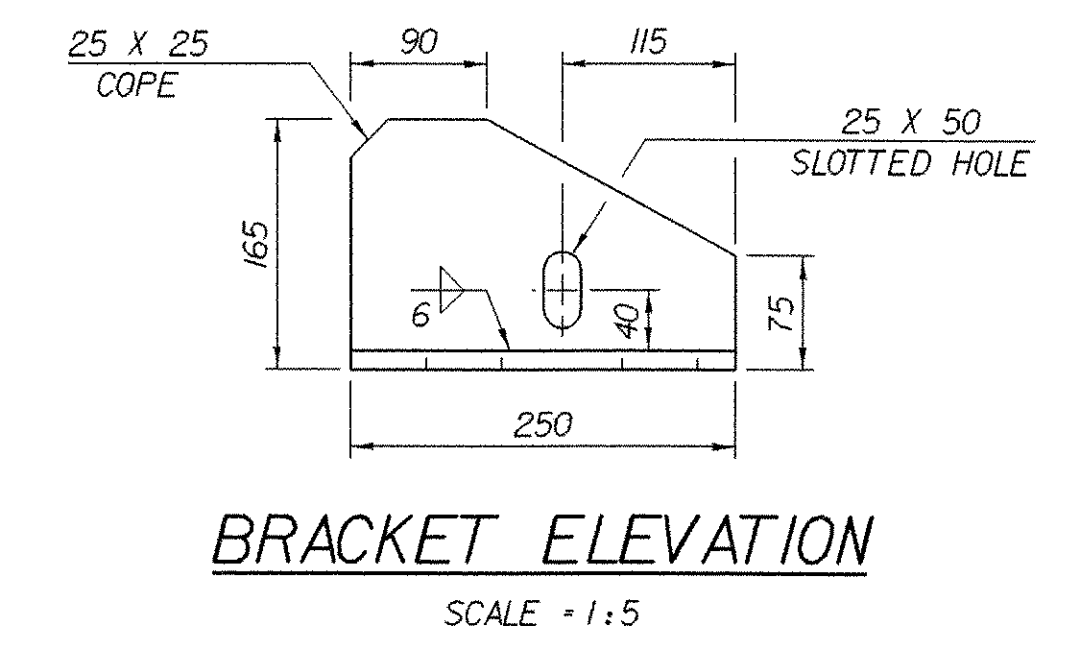
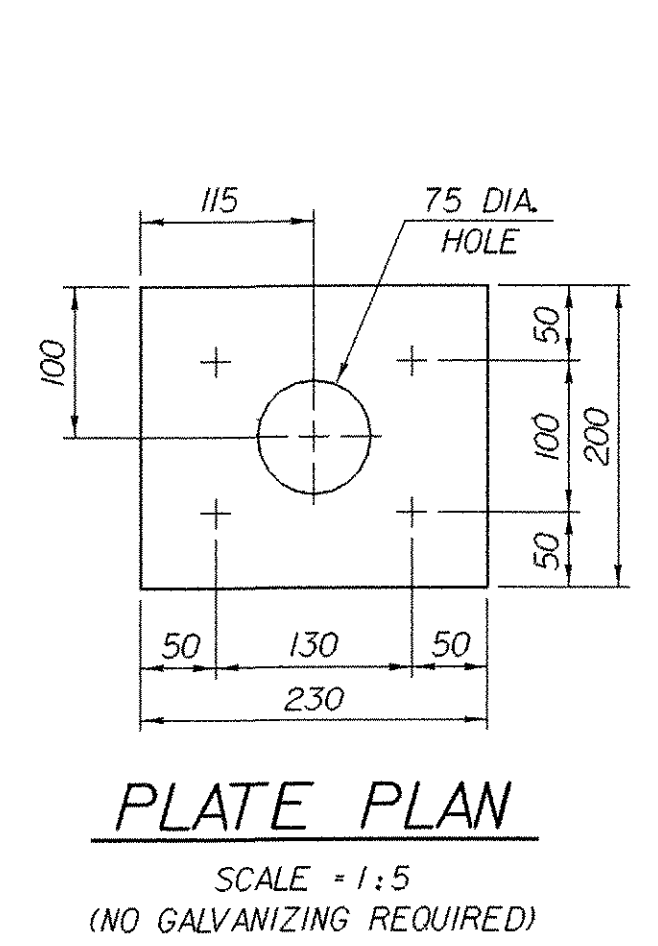
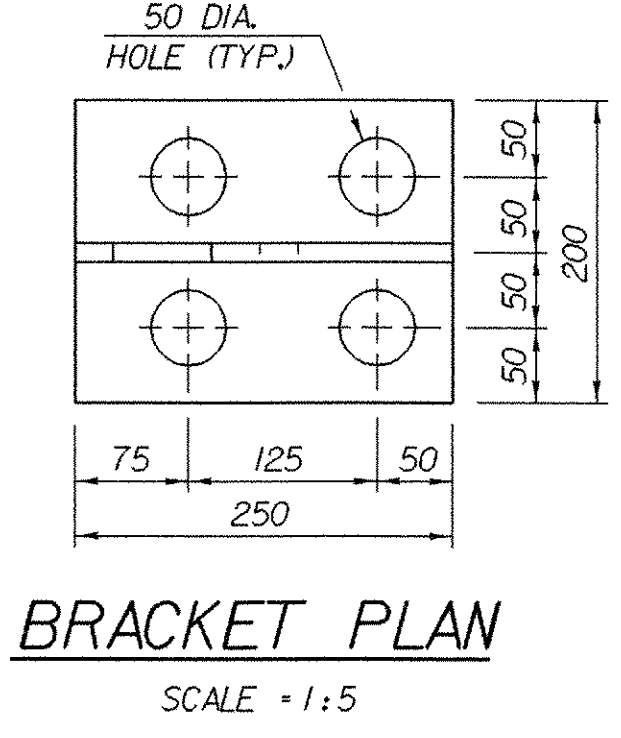
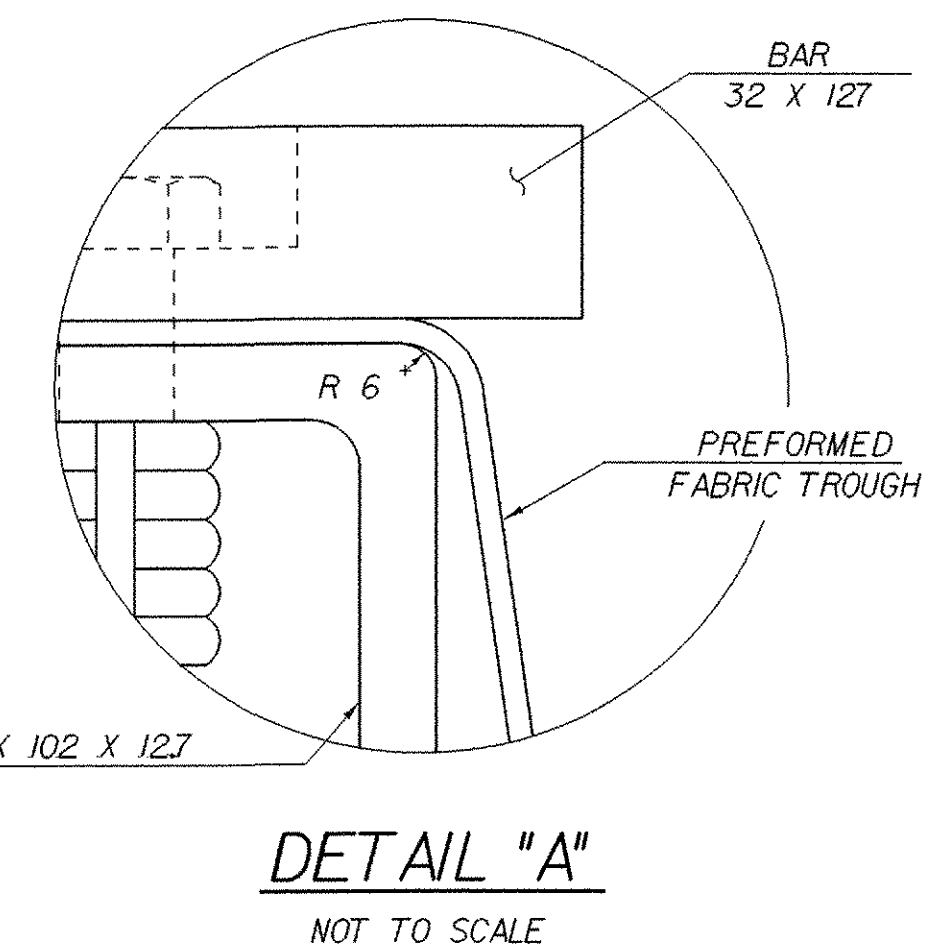
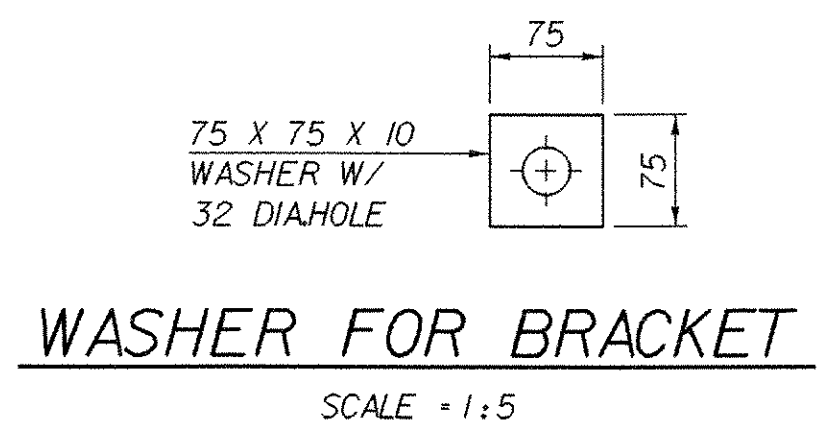
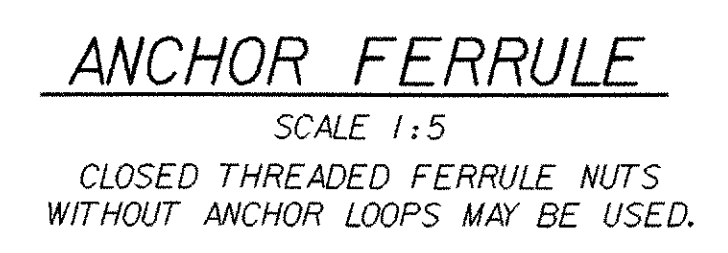
"A" IS THE SETTING BEFORE ANY DEAD LOADS ARE IN PLACE.



**TYPICAL SECTION BETWEEN GIRDERS**  
(NORMAL TO  $\phi$  BEARING)  
SCALE = 1:5



**TYPICAL SECTION AT GIRDERS**  
(NORMAL TO  $\phi$  BEARING)  
SCALE = 1:5



**EXPANSION JOINT TYPICAL SECTION**

- EXPANSION JOINT NOTES**
1. DETAILS ON THIS SHEET ARE FOR ITEM 516.10 "BRIDGE EXPANSION JOINT (VERMONT)".
  2. PREFORMED FABRIC MATERIAL SHALL BE CONTINUOUS AND SHALL CONFORM TO SUBSECTION 707.07.
  3. BUTYL RUBBER TAPE SHALL CONFORM TO AASHTO SPECIFICATION M-198, TYPE II.
  4. THE FINAL FINISH OF THE EXPANSION DEVICE SHALL BE COVERED DURING THE PLACING OF BRIDGE DECK CONCRETE.
  5. ALL STEEL COMPONENTS SHALL BE AASHTO M270/M270M GRADE 250 GALVANIZED OR METALIZED AS PER SUBSECTION 506.15 (a) OR (b) UNLESS OTHERWISE SPECIFIED.
  6. THE ITEM "BRIDGE EXPANSION JOINT (VERMONT)" SHALL INCLUDE THE FABRICATION AND ERECTION OF THE COMPLETE JOINT ASSEMBLY INCLUDING ALL STEEL PLATES, BRACKETS, ANGLES, WELDED STUDS OR RODS, PREFORMED FABRIC DRAIN TROUGH MATERIAL AND PLASTIC DRAIN TUBES, BUTYL RUBBER TAPE AND ANY OTHER MISCELLANEOUS MATERIAL NECESSARY TO INSTALL THE JOINT.
  7. THE 203 X 102 X 12.7 ANGLES SHALL BE FURNISHED AS ONE CONTINUOUS PIECE. THE 32 X 127 BARS EACH SIDE OF THE JOINT SHALL BE PROVIDED IN TWO EQUAL LENGTHS.
  8. COAT CONCRETE CONTACT SURFACES WITH EPOXY BONDING COMPOUND MEETING THE REQUIREMENTS OF SUBSECTION 719.02. PAYMENT SHALL BE INCLUDED IN THE UNIT PRICE BID FOR ITEM 516.10 "BRIDGE EXPANSION JOINT (VERMONT)".
  9. A 25 DIAMETER PLASTIC DRAIN TUBE SHALL BE INSTALLED AS SHOWN AT THE FACE OF CURB. THE UPPER END IS TO BE PLUGGED WITH STEEL WOOL AND THE LOWER END IS TO EXTEND BELOW THE BOTTOM OF THE ADJACENT STRINGER. THE DRAIN TUBES SHALL BE FASTENED TO THE STRINGERS USING A METHOD APPROVED BY THE ENGINEER. THE PLASTIC DRAIN TUBE SHALL MEET THE REQUIREMENTS OF SECTION 740.01.
  10. FILL COUNTERBORED HOLES WITH HOT POURED JOINT SEALER AFTER BOLT INSTALLATION. PAYMENT FOR THE WORK SHALL BE SUBSIDIARY TO ITEM 516.10.
  11. PAYMENT FOR WATERSTOP SHALL BE SUBSIDIARY TO CONCRETE PAY ITEM.
  12. A DRIP BEAD OF 6 X 180 STRIP OF PREFORMED MATERIAL SHALL BE CEMENTED TO THE BOTTOM OF THE FABRIC TROUGH USING AN ADHESIVE APPROVED BY THE MANUFACTURER. THE DRIP BEAD SHALL BE APPLIED 25 FROM THE DOWNSPOUT END OF THE TROUGH.
  13. FABRIC TROUGH SHALL BE THOROUGHLY CLEANED AND FLUSHED AFTER PAVING OPERATIONS.
  14. THE EXPANSION JOINT SHALL BE SHOP ASSEMBLED AND SHIPPED AS ONE UNIT.
  15. THE THREADED RODS SHALL MEET THE REQUIREMENTS OF A 307, GR.C.

**ALL PLATES 12 THICK UNLESS OTHERWISE NOTED**

PROJECT NAME:	MENDON
PROJECT NUMBER:	BRO 1443 (35)
FILE NAME:	/str5/95j290/sj290exp.dgn
PROJECT LEADER:	C. KELLER
DESIGNED BY:	M. EVANS-MONGEON
PLOT DATE:	18-NOV-2005
DRAWN BY:	K. RUTTER
CHECKED BY:	T. SUMNER
SHEET	57 OF 94