

GPS CONTROL POINTS

HVCTRL # 1
 Standard Disk Stamped
 25-2 Temp
 NORTH = 127415.261
 EAST = 465368.172
 ELEV. =

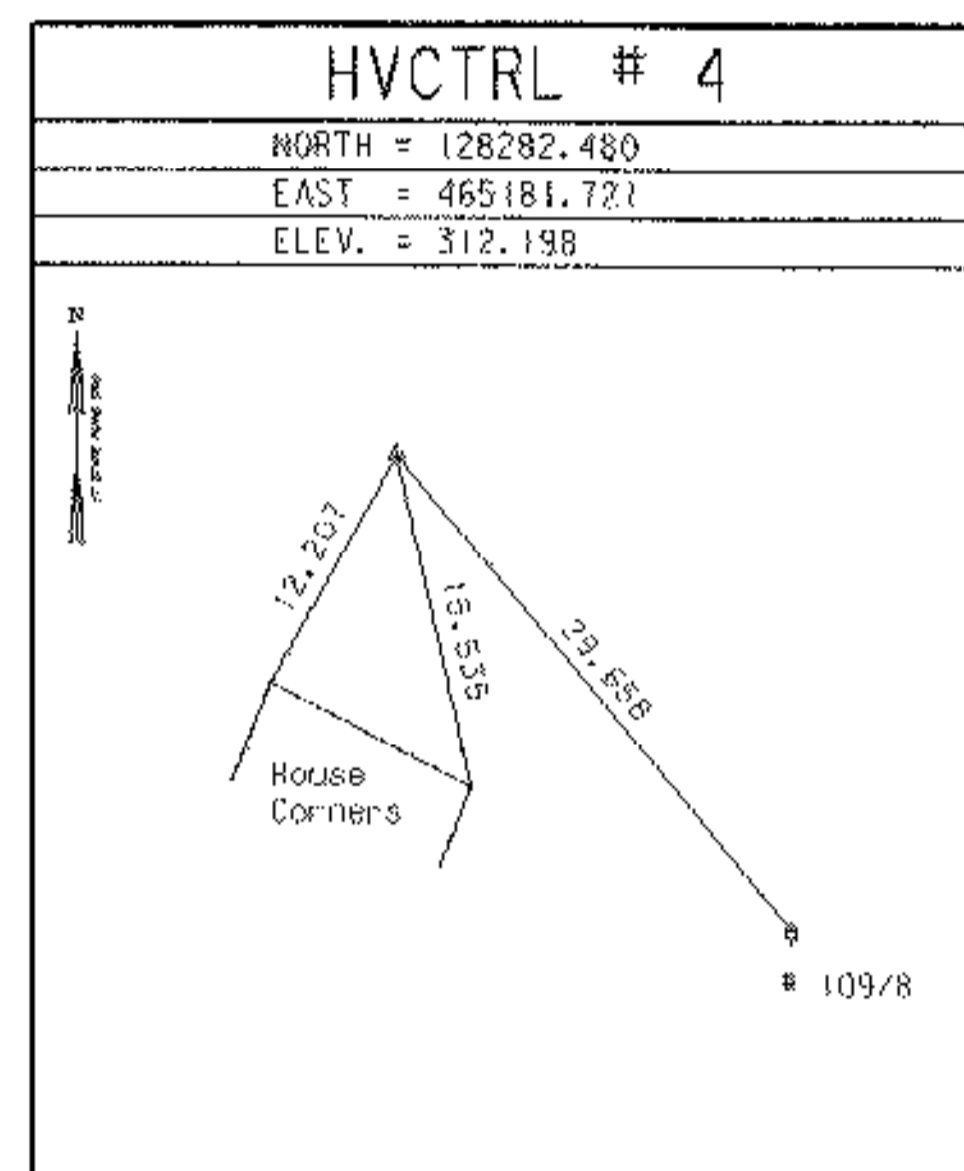
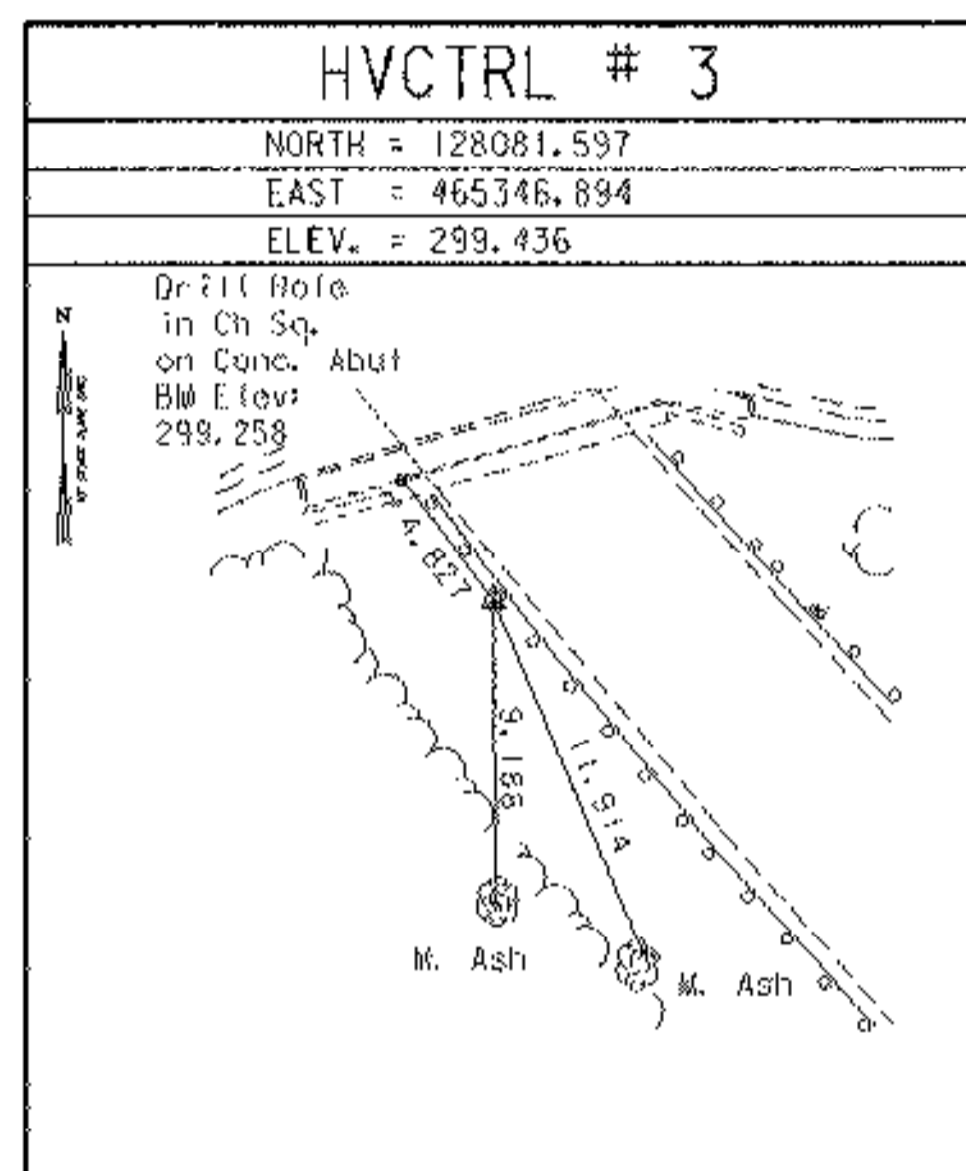
HVCTRL # 2
 Standard Disk Stamped
 Mendon
 NORTH = 127997.517
 EAST = 465501.393
 ELEV. = 317.408

From the junction of route 7 and route 4 east in Rutland, go east on route 4 for 3.4 miles to its intersection with Park Lane on the left and the mark on the left in the northwest quadrant of the intersection. The mark is a 1m (3ft) rebar, with a drill hole, driven into the ground
 12.7 m (41.7ft) south of a gate post (old tel pole)
 10.6m (34.8ft) northeast of the end of a metal guardrail on park lane
 10.1m (33.1ft) east of a fence corner and conc highway bound
 1.4m (4.6ft) west of the west edge of route 4

Station Mendon was reported destroyed

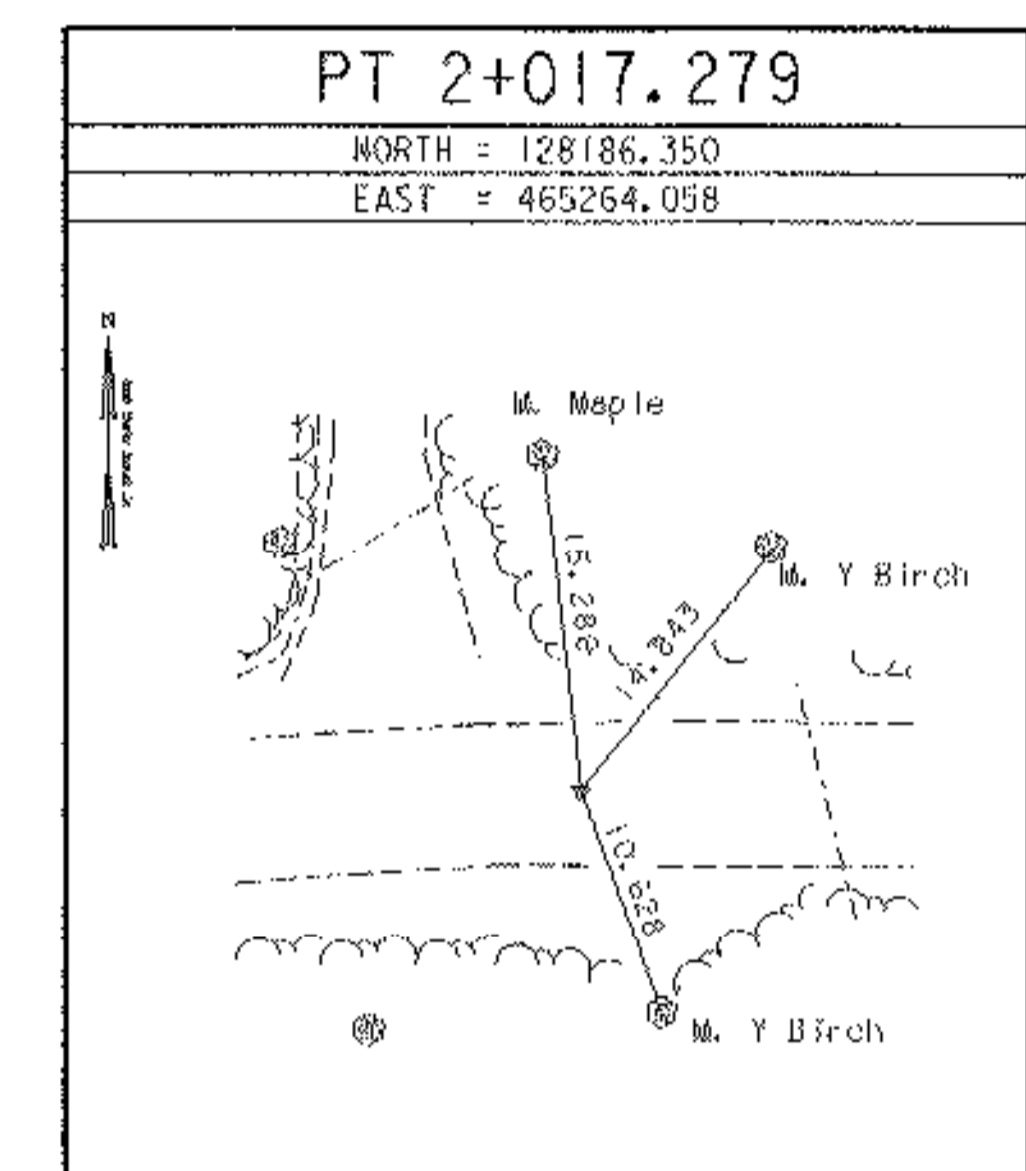
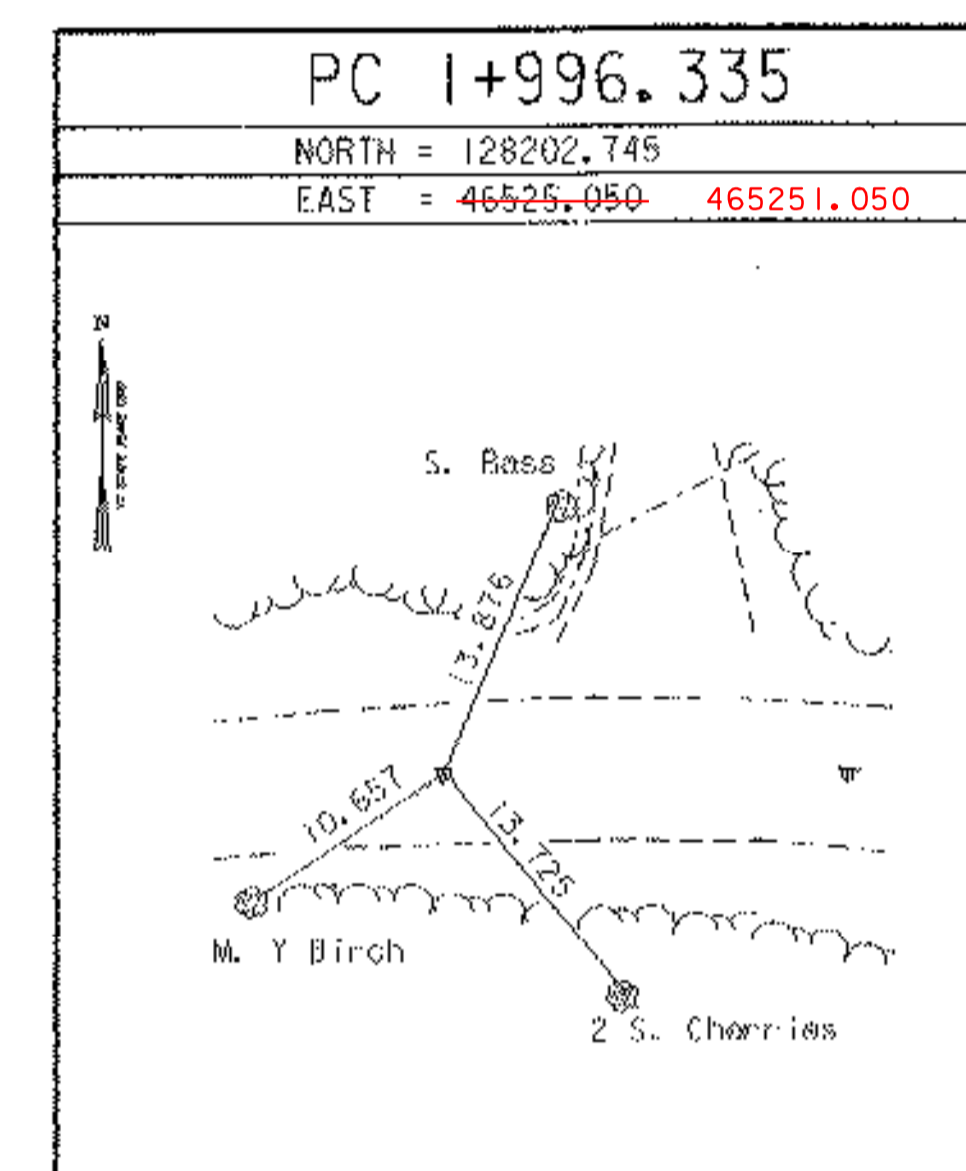
* Description provided by Vermont Agency of Transportation Geodetic Survey Unit

TRAVERSE TIES

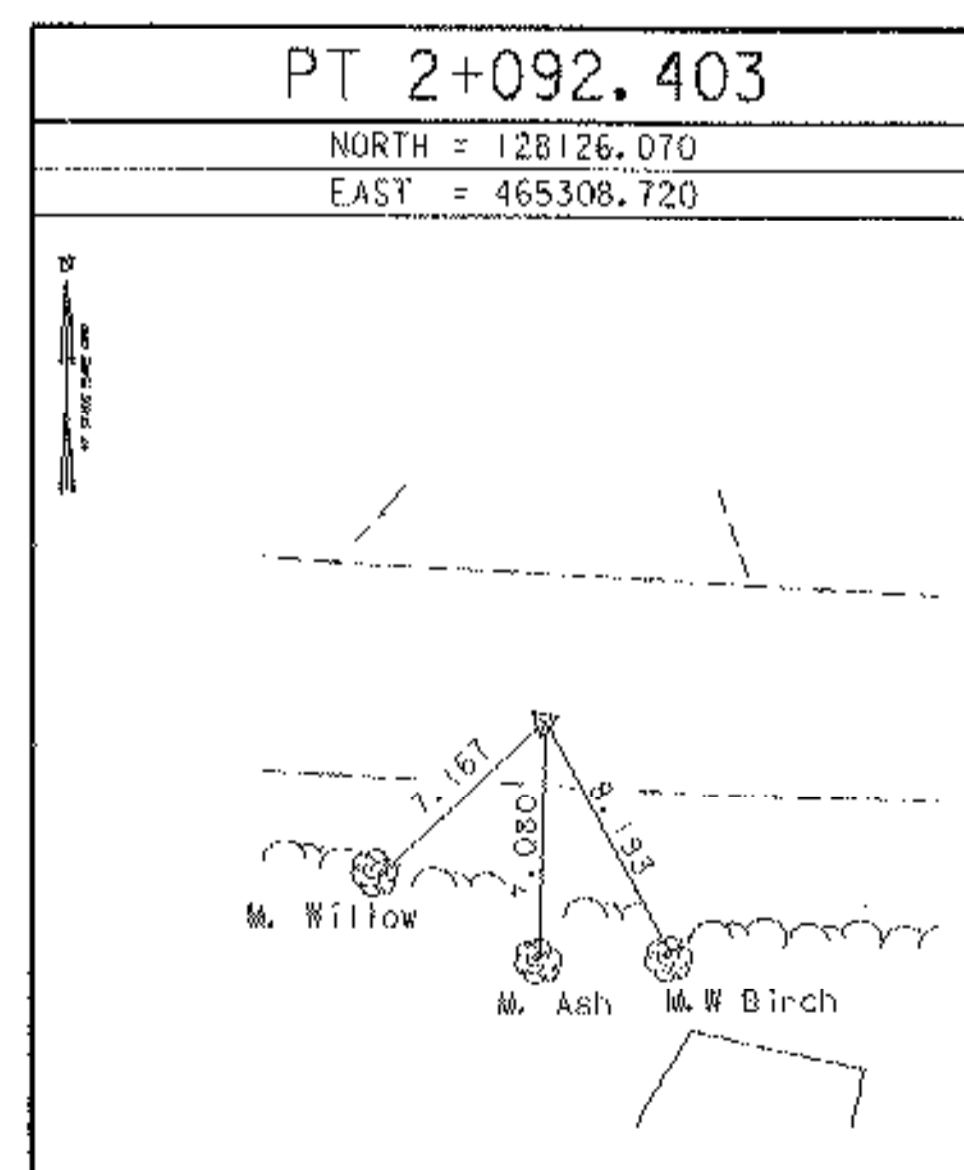
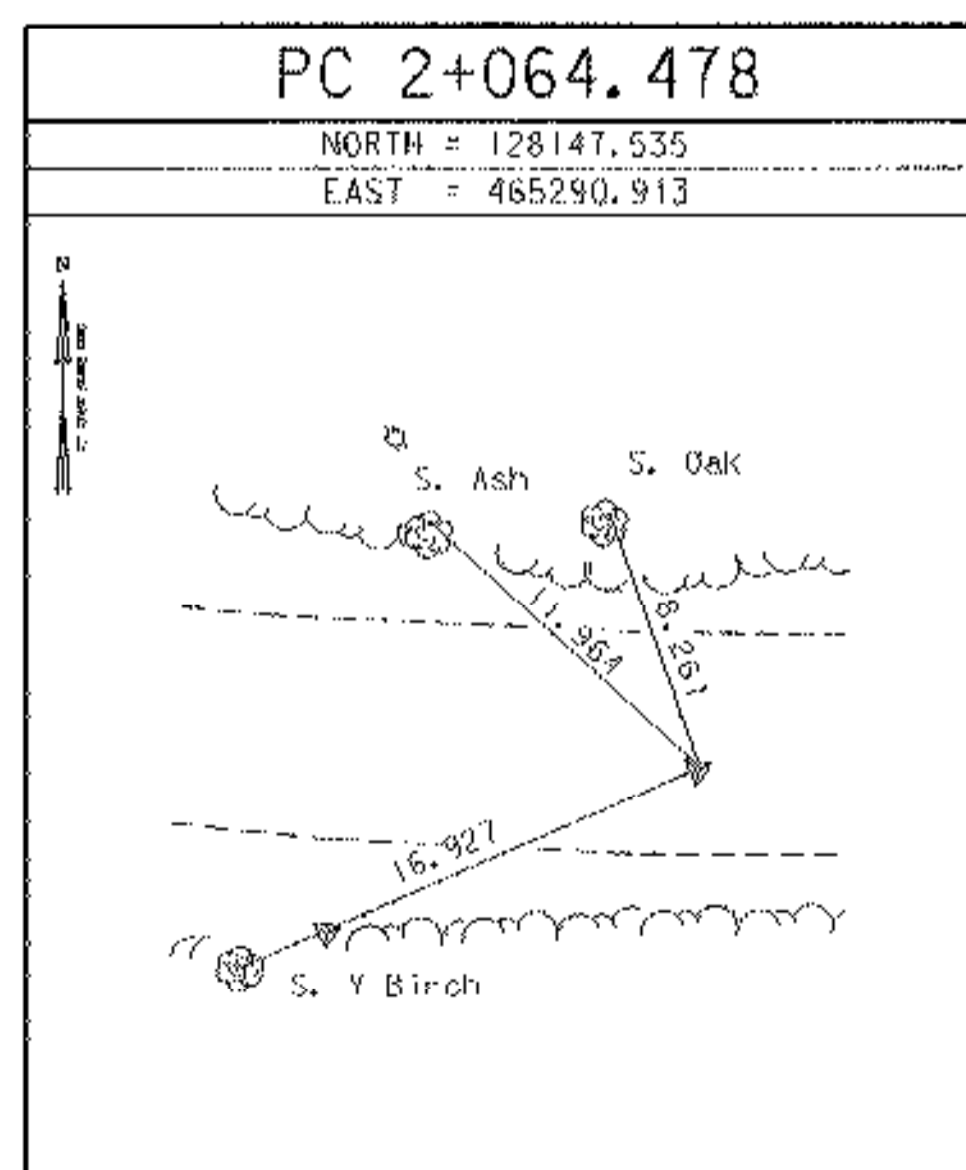


* Main Traverse Completed 01/31/96 by L. Orvis P.C. & R. Bullock

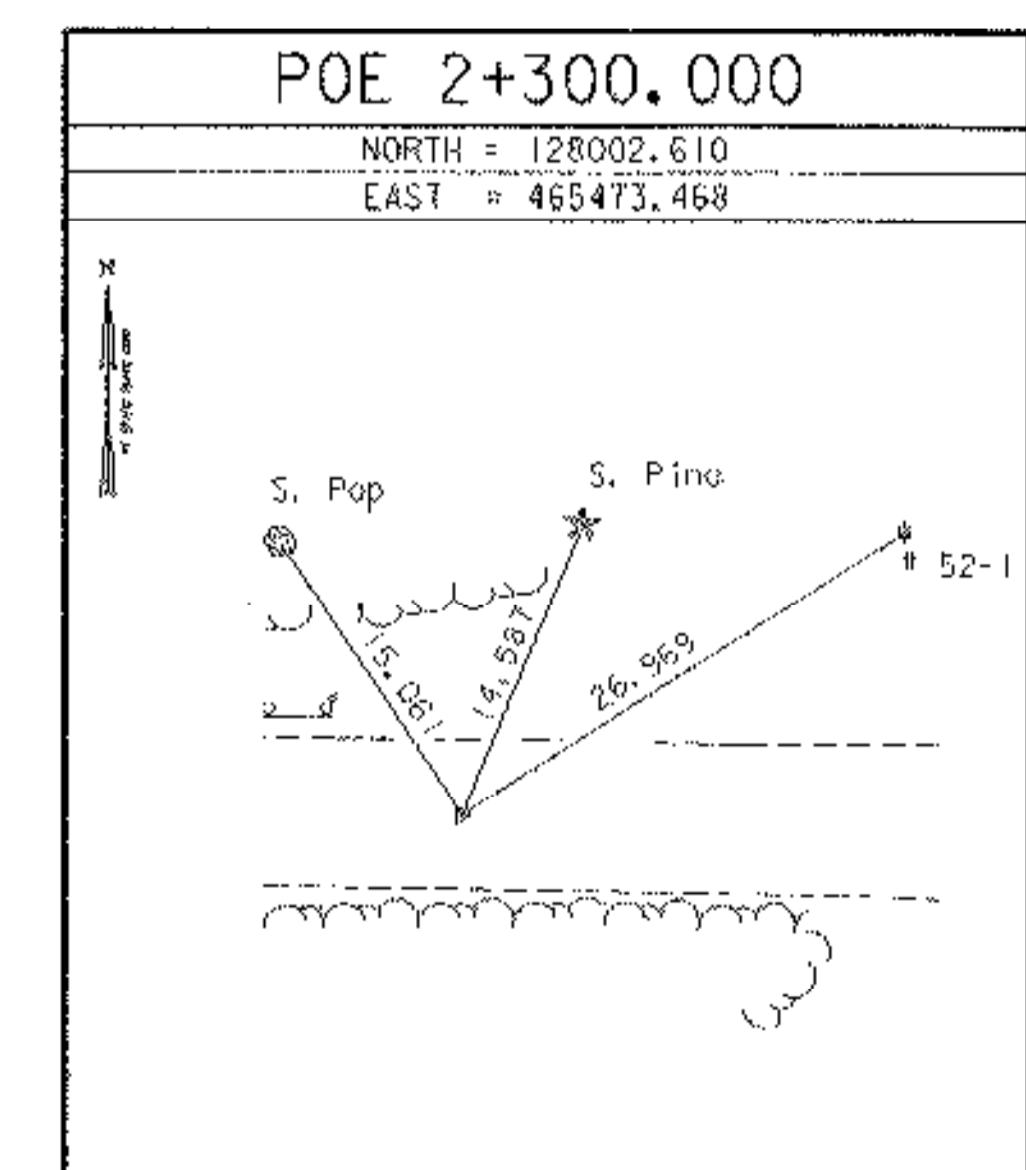
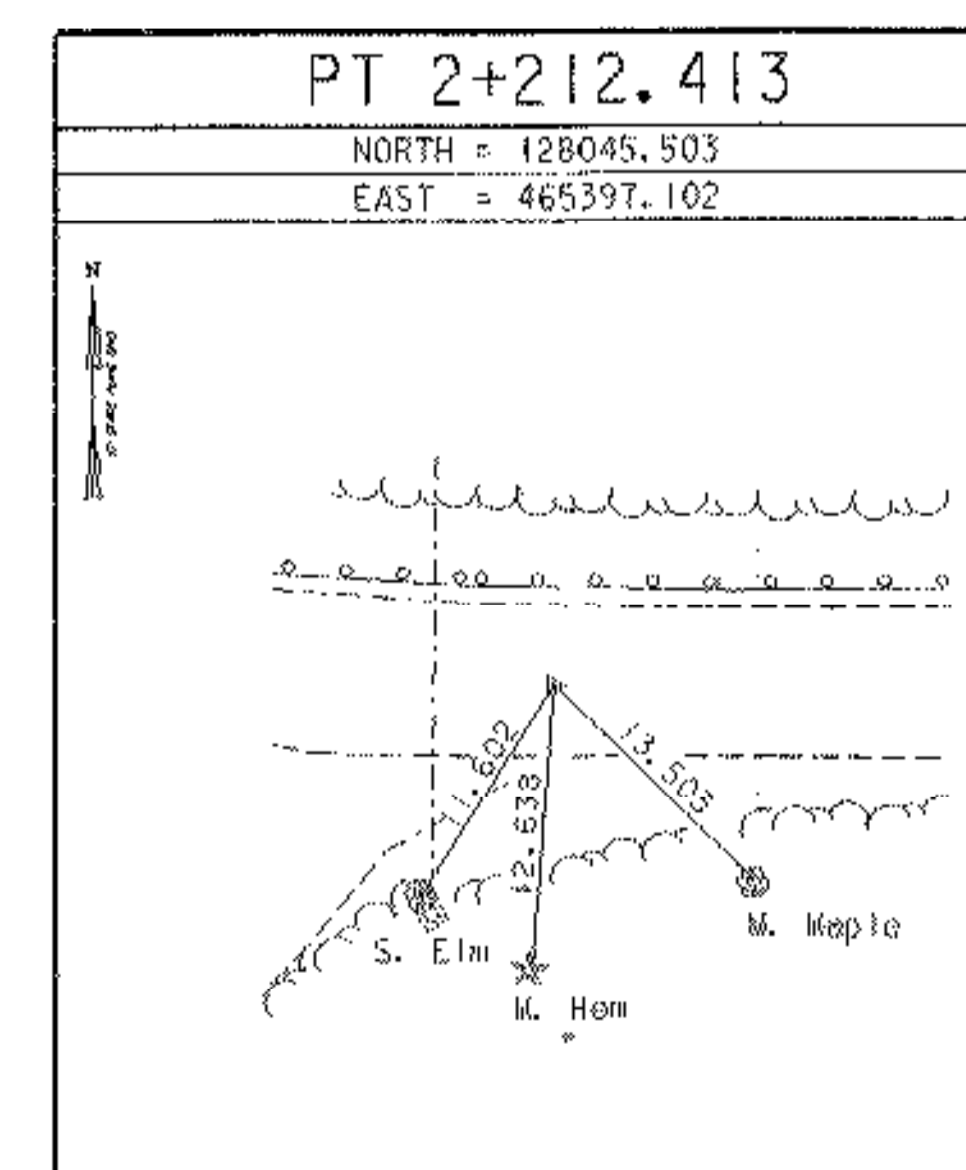
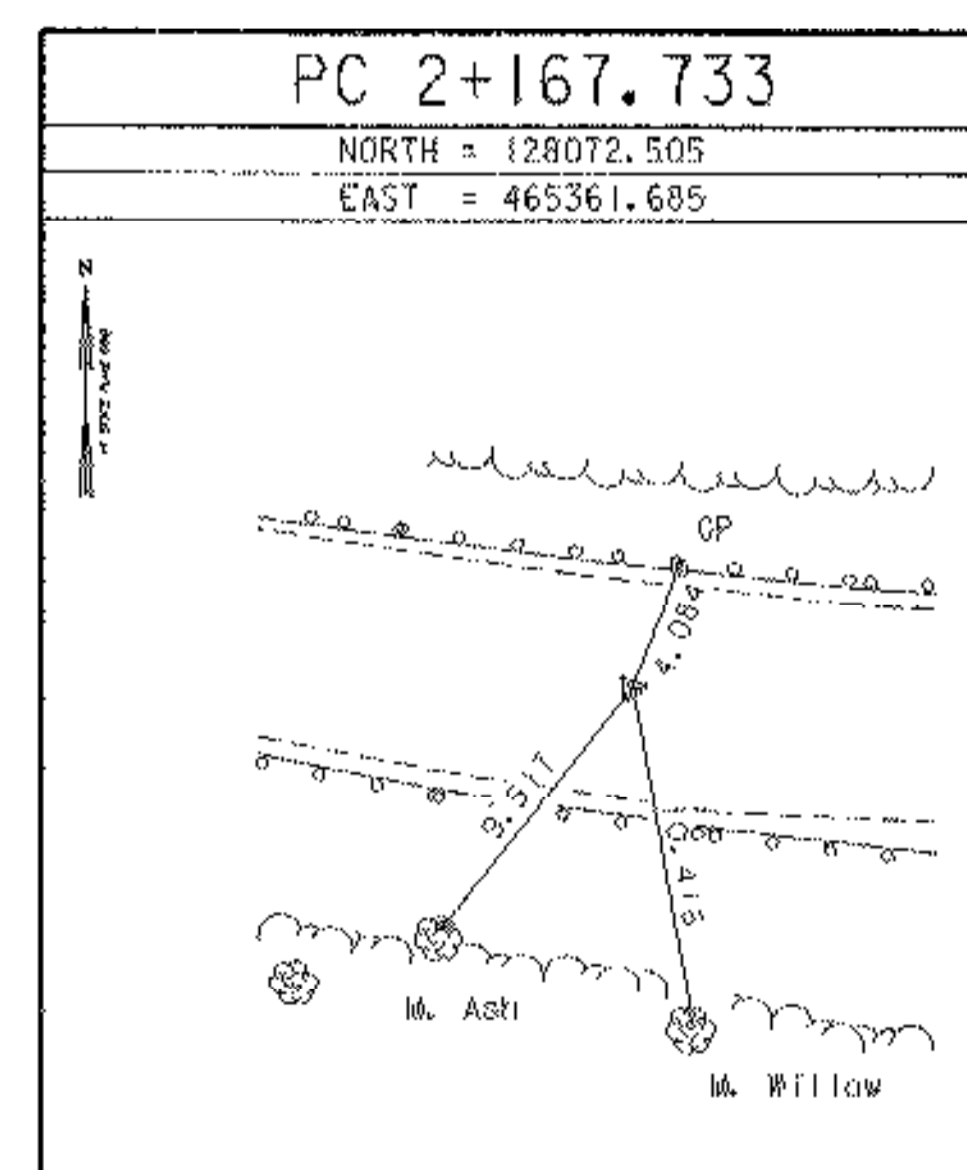
ALIGNMENT TIES



ALIGNMENT TIES



* Alignment Staked 03/25/99 by L. Orvis P.C. & R. Bullock



DATUM	
VERTICAL	NAVD 88
HORIZONTAL	NAD 83/92
ADJUSTMENT	none

PROJECT NAME:	Mendon	PLOT DATE:	18-NOV-2005
PROJECT NUMBER:	BRO 1443 (35)	DRAWN BY:	R. Bullock
FILE NAME:	951290/survey/xj2901.dgn	DESIGNED BY:	M. EVANS-MONGEOM
PROJECT LEADER:	C. KELLER	CHECKED BY:	
DESIGNED BY:	M. EVANS-MONGEOM	SHEET	13 OF 94