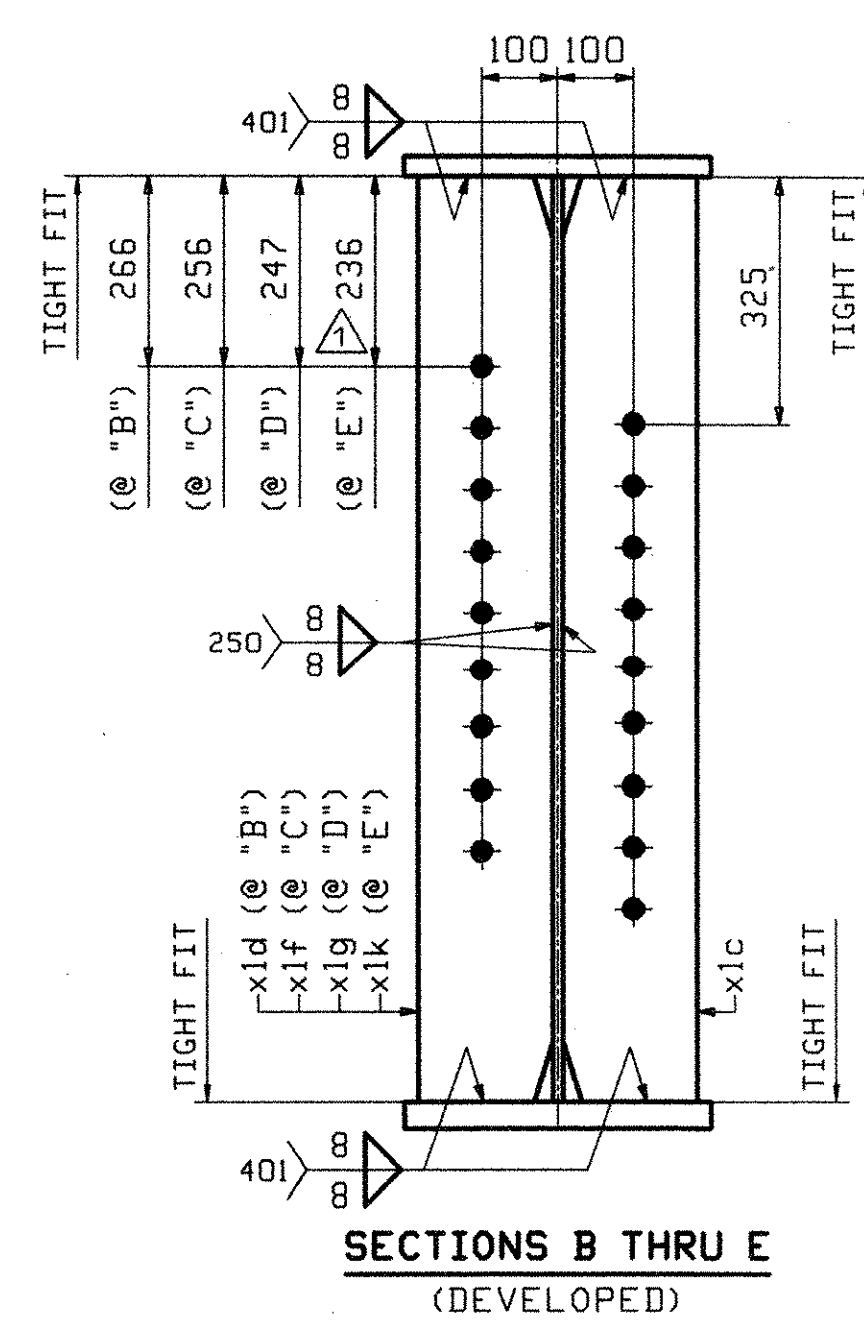
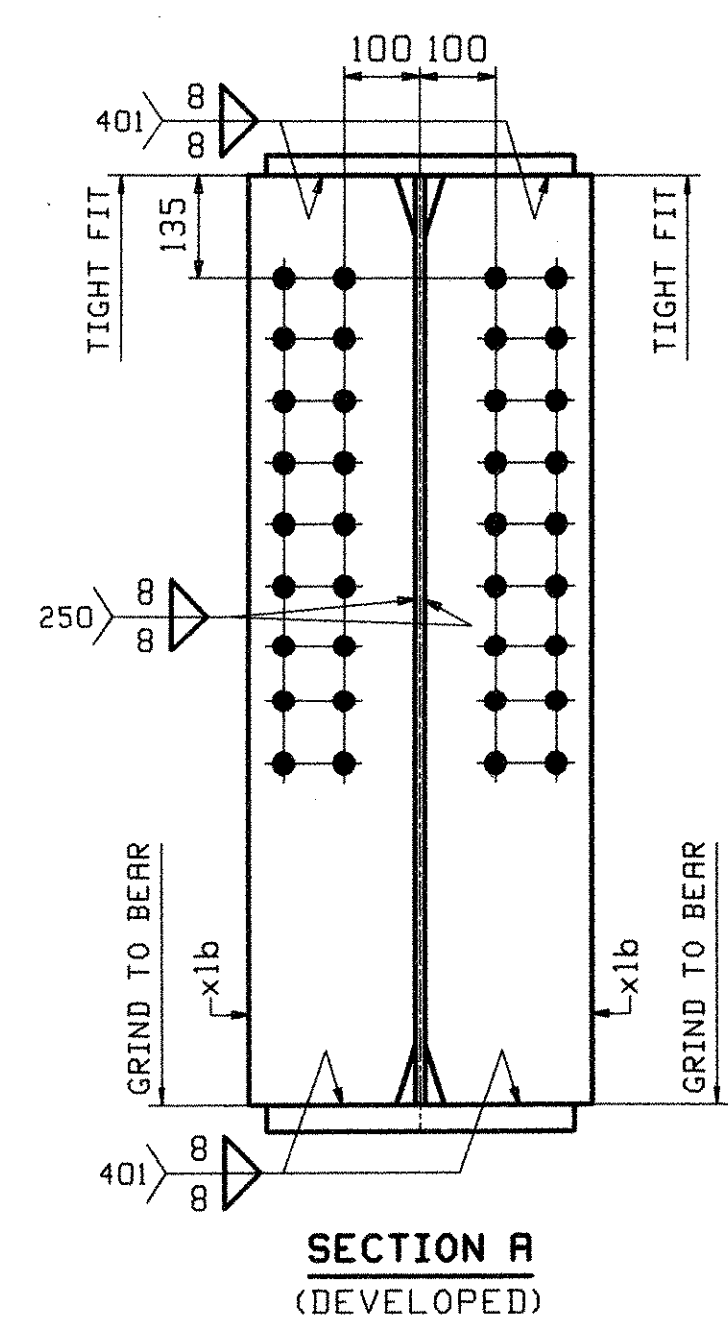
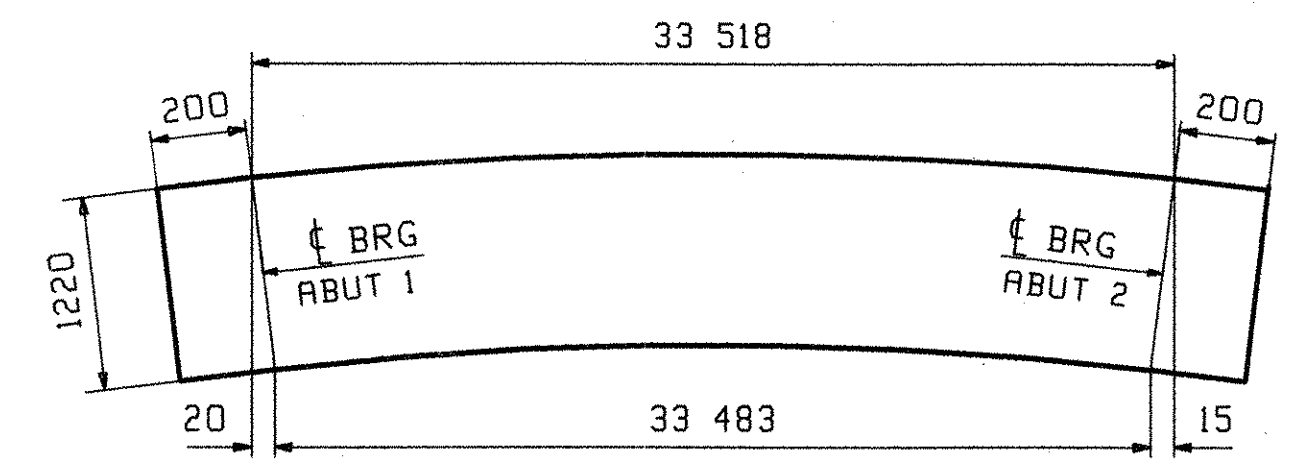


ONE - GIRDER - 3G3

FOR GIRDER STANDARD DETAILS SEE DRAWING XI.
 FOR CAMBER DIAGRAM SEE DRAWING C1.
 FOR GENERAL NOTES SEE DRAWING GNI.
 H2-3 DENOTES MATERIAL SUBJECT TO CHARPY V-NOTCH TESTING.



ABM INFO		SHIP		BILL OF MATERIAL				JOB NO.	DRAWING NO.	REV.
PAGE	LINE	MARK	QTY	MARK	MATERIAL	LENGTH	REMARKS	WT	PROCUREMENT NOTES	
						m				
						mm				
		3G3	1		GIRDER			1088 kg 24400 lb		
1	G		1	wa	PL 13x1220	11 621	(M270M-345HT2)	(H2-3)		
1	E		1	wb	PL 13x1220	22 299	(M270M-345HT2)	(H2-3)		
1	J		1	ta	PL 25x406	22 600				
1	L		1	tb	PL 25x406	11 318				
1	A		1	ba	PL 35x406	22 600	(M270M-345HT2)	(H2-3)		
1	C		1	bb	PL 35x406	11 283	(M270M-345HT2)	(H2-3)		
2	B		4	x1b	PL 22x220	1 220		MIF		
2	C		4	x1c	PL 13x178	1 220				
2	C		1	x1d	PL 13x178	1 220				
2	C		1	x1f	PL 13x178	1 220				
2	C		1	x1g	PL 13x178	1 220				
2	C		1	x1k	PL 13x178	1 220				



ORIENTATION DIAGRAM FOR CAMBER SEE DWG C1

OUT FOR APPROVAL	12-28-05								
OUT FOR APPROVAL	2-27-06								
ISSUED TO SHOP									
FIELD & OFFICE									
APPROVAL COMMENTS	2/21	JTB	ELC						

REV.	REMARKS	DATE	DNW	CHK	APP	Q.A.	NO.	DIA.	LGT	TYPE	WASHER
	MATERIAL:										
	M270M GR 345W										
	ELECTRODES:										
	HOLES:										
	15										
	16										
	(UN)										
	SHOP BOLTS:										
	NONE										

SURFACE PREP. & PAINT:
 SEE DRAWING GNI

DESCRIPTION:	GIRDER - 3G3	DRAWN BY	JTB	DATE	11/08
JOB:	TH 1 (FAS 160) OVER OTTER CREEK	CHKD BY	ELC	DATE	12/06
	BRIDGE NO. 6	APPROV BY			
	TOWN OF LEICESTER, VERMONT	SUPERVISOR	W. J. GATTI		
	COUNTY OF ADDISON				
	CONTRACTOR: BLOW & COTE				

PROJ NO.	BRF 0160(3)S	Q.A.	
CUSTOMER:	VT AOT		
CASCO BAY STEEL STRUCTURES, INC.		JOB NO.	285
75 SPRING HILL ROAD	SACO, MAINE 04072	DRG. NO.	3
PHONE (207) 282-7360	FAX. (207) 282-1179	REV.	3

RECEIVED
 MAR 03 2006
 RESUBMIT APPROVED
 BY [Signature] DATE 3/6/06