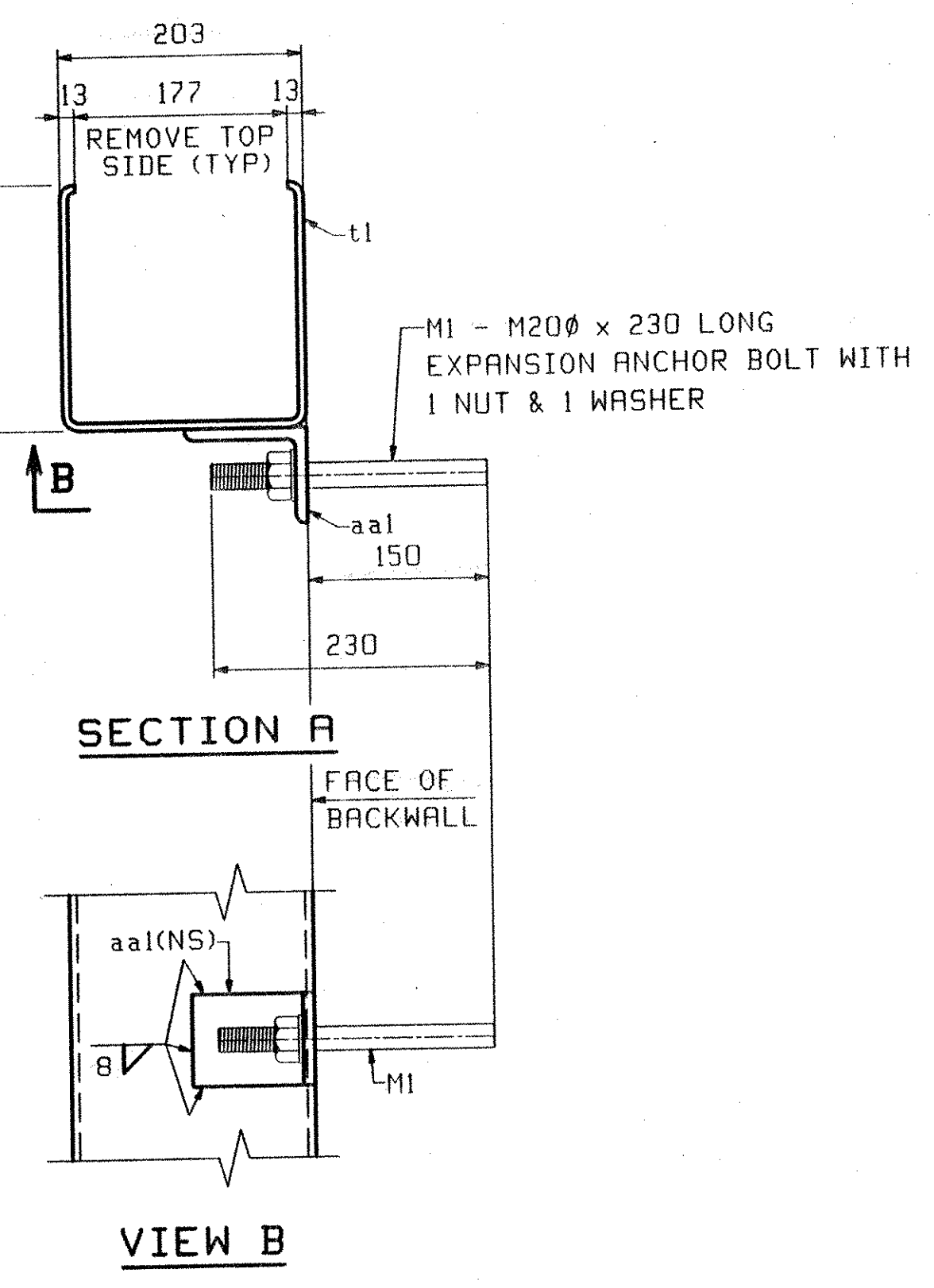


ONE ~ DOWNSPOUT - D1
AT ABUTMENT 1



BILL OF MATERIAL		JOB NO. 285		DRAWING NO. D1		REV.			
PAGE	LINE	MARK	QTY	MARK	MATERIAL	LENGTH	REMARKS	WT	PROCUREMENT NOTES
						m			
		D1	1		DOWNSPOUT			79 kg 174 lbs	
3	B		1	t1	TS203x203x6.4	2 000	(AS004-B)		
3	C		2	aal	L 102x76x9.5	0 076			
		M1	2		EXPANSION ANCHOR BOLTS			1 kg 2 lbs	
3	F		2		ROD 20 #	D 230	NUT		
3	G		2		HSW		(F436) (GALV)		

OUT FOR APPROVAL	<i>J.C.C.</i>											
ISSUED TO SHOP												
FIELD & OFFICE												
REV.	REMARKS	DATE	DWN	CHK	APP	Q.A.	NO.	DIA.	LGT	TYPE	WASHER	
MATERIAL:	M270M-250	ELECTRODES:		HOLES:	AS NOTED	SHOP BOLTS:	AS NOTED					
SURFACE PREP. & PAINT: GALVANIZED AFTER FABRICATION												
DESCRIPTION:	DOWNSPOUT					DRAWN BY:	JTB	DATE:	07/25			
JOB:	TH 1 (FAS 160) OVER OTTER CREEK BRIDGE NO. 6 TOWN OF LEICESTER, VERMONT COUNTY OF ADDISON CONTRACTOR: BLOW & COTE					CHKD BY:	PCP	DATE:	07/31			
PROJ NO.	BRF 0160(3)S					APPROV BY:	SUPERVISOR	W. J. GATTI				
CUSTOMER:	VT AOT					Q.A.						
CASCO BAY STEEL STRUCTURES, INC.							JOB NO.	285	DRG. NO.	D1		
75 SPRING HILL ROAD SACO, MAINE 04072							PHONE	(207) 282-7360	FAX	(207) 282-1179	REV.	△

VTRANS
 RECEIVED
 OK'D BY *E. Roy* 8/14/06
 OK'D BY *JWG* 8/15/06
 AUG 11 2006
 RESUBMIT _____ APPROVED *AS NOTED*
 BY *PCP* DATE *8/17/06*
 148 SS

PCP Twp Reg. 1.0910.018 EST. 2008 / www.casco.com/285-D1 Rev.0