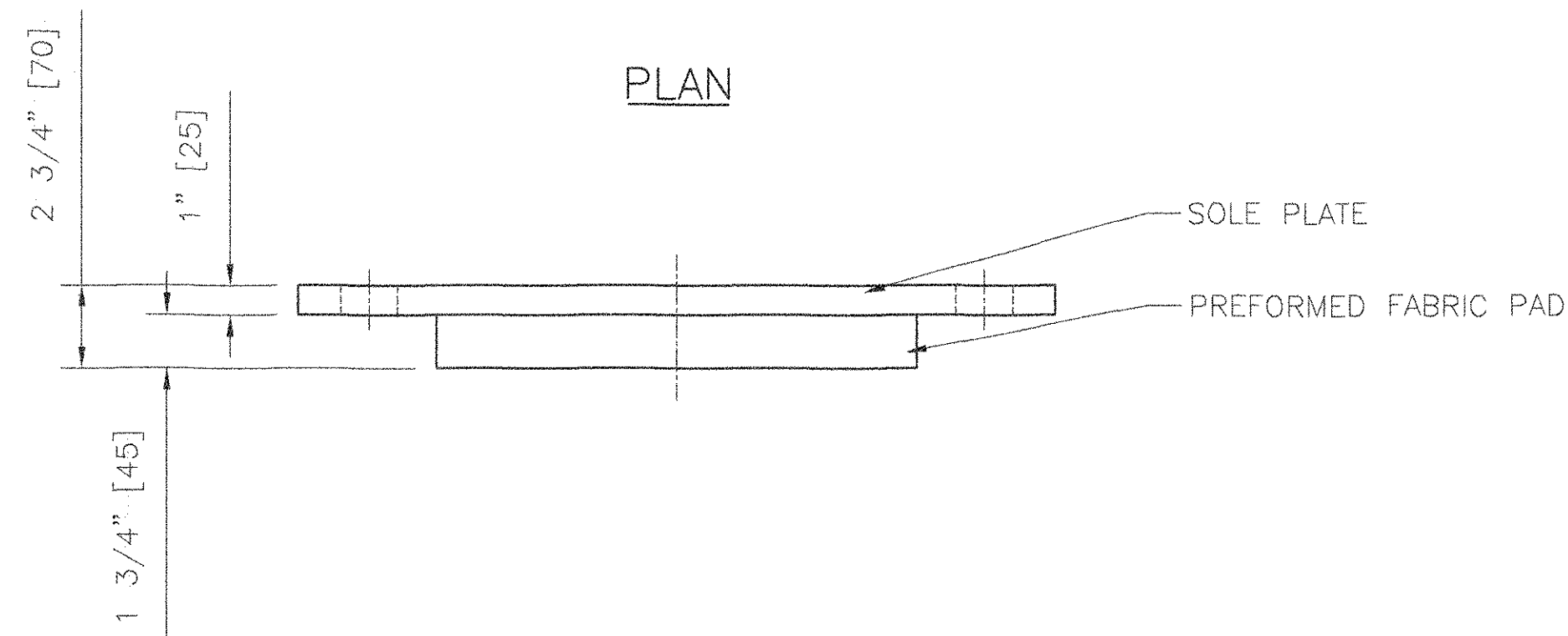
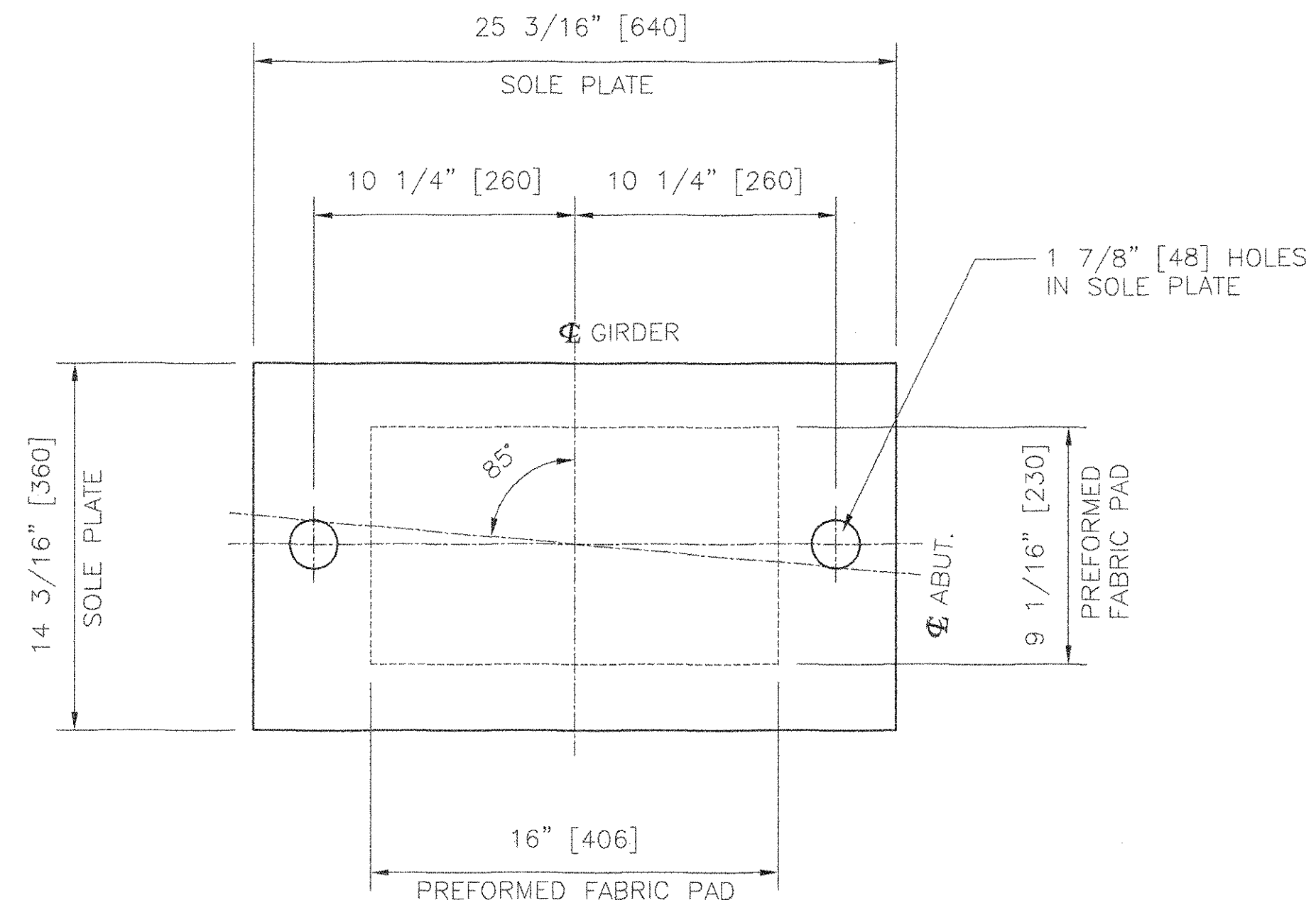


FRONT ELEVATION

**COSMEC EXPANSION
FABRIC PAD BEARING**

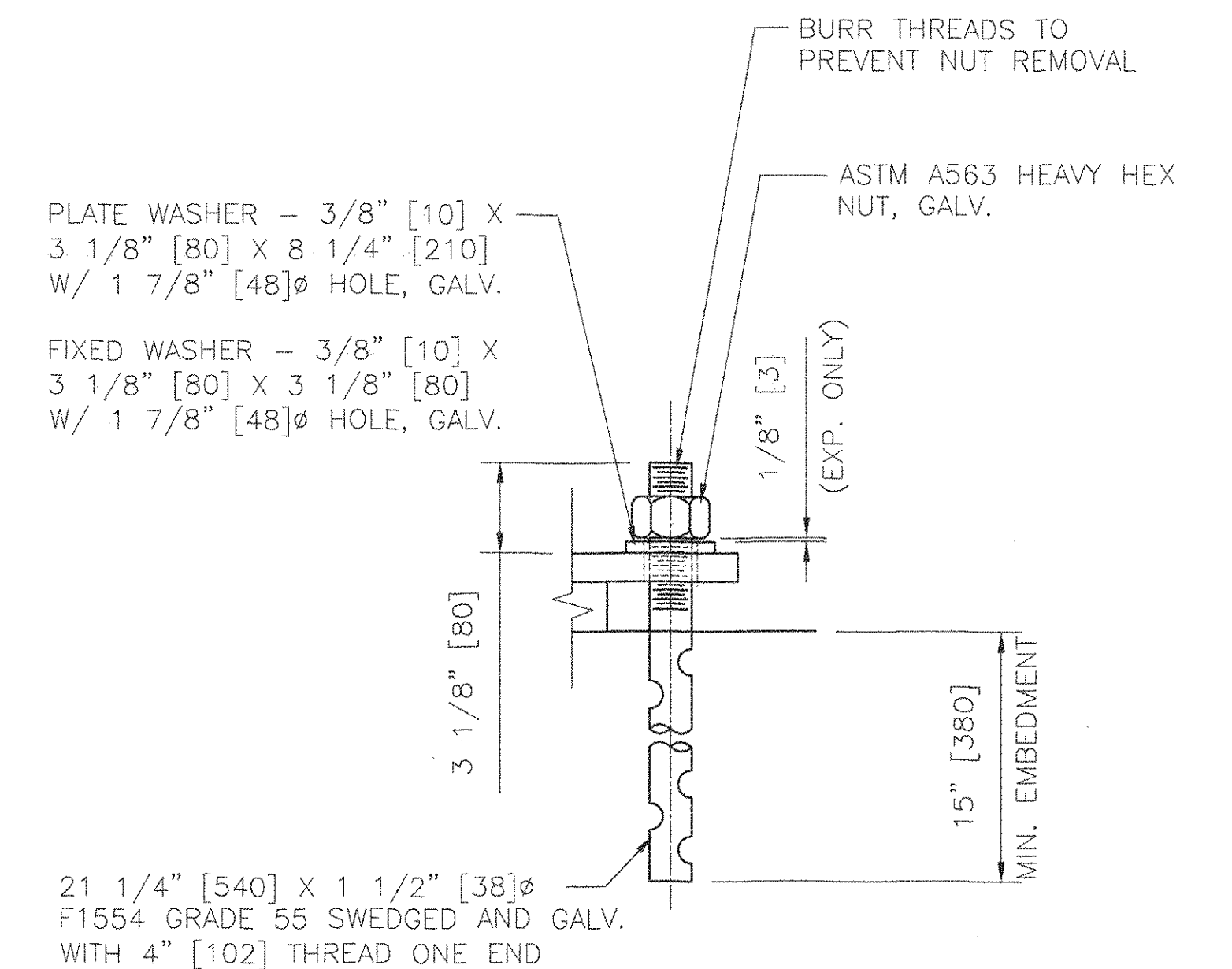
LOCATION: ABUTMENT NO.1
QUANTITY: 5



FRONT ELEVATION

**COSMEC FIXED
FABRIC PAD BEARING**

LOCATION: ABUTMENT NO.2
QUANTITY: 5



ANCHOR BOLT DETAIL

BEARING NOTES:

- ALL MATERIALS USED IN THE FABRICATION OF THESE BEARINGS SHALL BE MADE IN THE U.S.A.
- BEARINGS ARE TO BE SHIPPED AS COMPLETE UNITS, STEEL BANDED, AND SHALL BE WRAPPED TO PROTECT FROM MOISTURE AND DIRT DURING TRANSIT AND STORAGE.
- LOCATION OF FABRICATION PLANT - 70 SOUTH STREET WALPOLE, MA 02081
- COSMEC, INC. REPRESENTATIVE - MR. MATT McANDREWS (508) 668-6600
- BEARINGS SHALL BE STORED IN A CLEAN, DRY, LEVEL UPRIGHT POSITION.

MATERIALS:

STEEL - ASTM A709, GR. 36 ZINC METALLIZED & SEALED
1/16 INCH RADIUS ON ALL EDGES
STAINLESS STEEL - A240, TYPE 304 MIRROR FINISH OF LESS THAN
10 MICRO INCHES RMS
PTFE - ASTM D4894
PREFORMED FABRIC BEARING PAD - AASHTO 18.4.9.1
ANCHOR BOLTS - SEE DETAIL

VAOT
RECEIVED
OK'D BY MKH OK'D BY *all*
JAN 06 2006
RESUBMIT APPROVED AS NOTED
BY *RLW* DATE 2/7/06

Structures Eqy

STATE OF VERMONT
AGENCY OF TRANSPORTATION
AC BRF 0160 (3)S
LEICESTER, VT.

COSMEC, INC. 70 SOUTH STREET WALPOLE, MA 02081

SCALE: 3/16"=1" DRAWN BY: MRR CHECKED BY: MCM
DATE: 12-21-05 DATE: 12-30-05

COSMEC FABRIC PAD BEARINGS

REV.	BY	DATE	OK'D	DATE	S.D. NUMBER	DRAWING NUMBER	REV.
					CUSTOMER	BLOW & COTE, INC.	
					60452	4567	

1311 B.B.