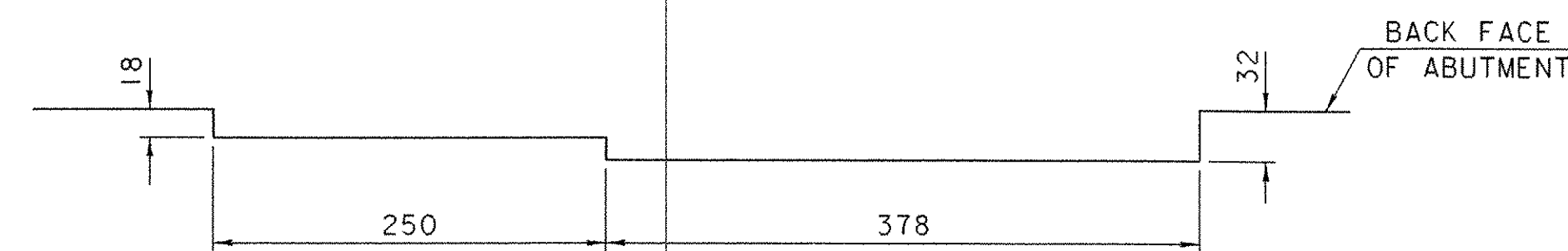
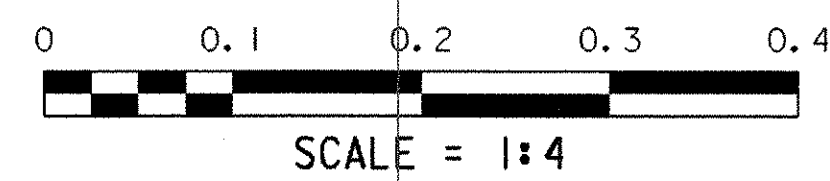


ELEVATION



SECTION "A-A"

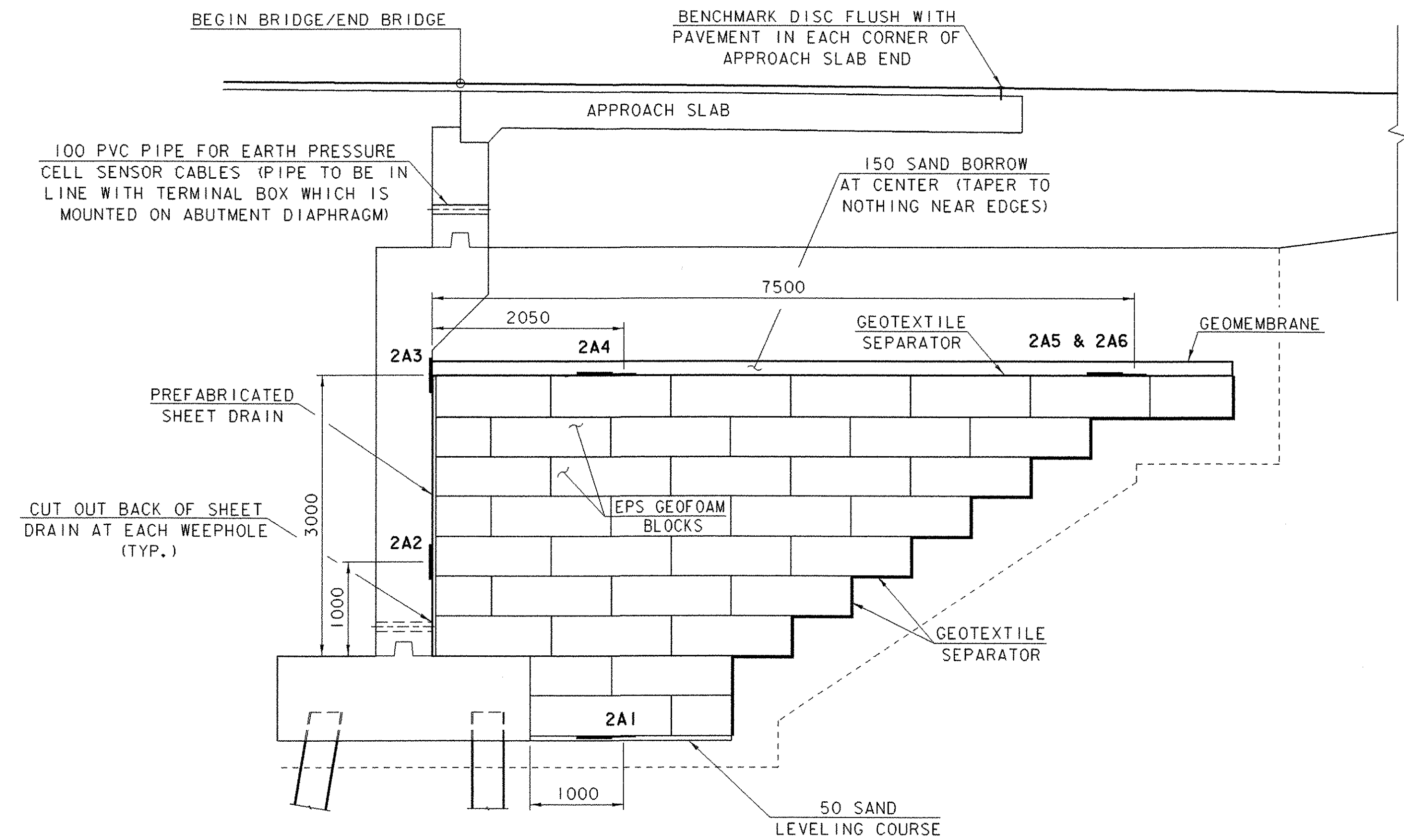
CONCRETE RECESS FOR EARTH PRESSURE CELL



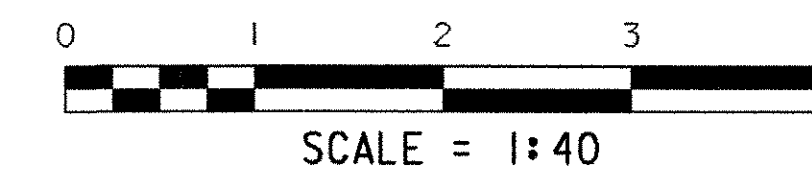
(CONCRETE RECESS SHALL BE PROVIDED FOR EARTH PRESSURE CELLS 1A2, 1A3, 2A2, AND 2A3)

NOTES:

1. PRESSURE CELLS 1A1 - 1A4 AND 2A1 - 2A4 ARE TO BE PLACED AT ROADWAY CENTERLINE. ALSO CELLS 1A1 AND 2A1 SHALL BE AT TOP OF SAND LEVELING COURSE.
2. PRESSURE CELLS 1A5 AND 2A5 ARE TO BE PLACED 1000 LEFT OF ROADWAY CENTERLINE AND TOP OF EPS GEOFOAM BLOCKS BELOW SAND BORROW.
3. PRESSURE CELLS 1A6 AND 2A6 ARE TO BE PLACED 1000 RIGHT OF ROADWAY CENTERLINE. AND TOP OF EPS GEOFOAM BLOCKS BELOW SAND BORROW.



EARTH PRESSURE CELL LOCATIONS AT ABUTMENT NO. 2



(ABUTMENT NO. 1 SIMILAR EXCEPT EARTH PRESSURE CELLS START WITH 1A INSTEAD OF 2A)

SHEET NAME: EARTH PRESSURE CELL DETAILS	
PROJECT NAME: LEICESTER	HIGHWAY NO.: TH 1
PROJECT NUMBER: BRF 0160(3)S	BRIDGE NO.: 6
	OVER: OTTER CREEK
FILE NAME: 95J288\Structures\sj288sub.dgn	PLOT DATE: 17-AUG-2005
PROJECT MANAGER: R. R. WHITCOMB	DRAWN BY: G. ROY
DESIGNED BY: C. CARLSON	IPARM NAME: sj288epod.i
BRIDGE SHEET NUMBER:	SHEET 65a OF 90