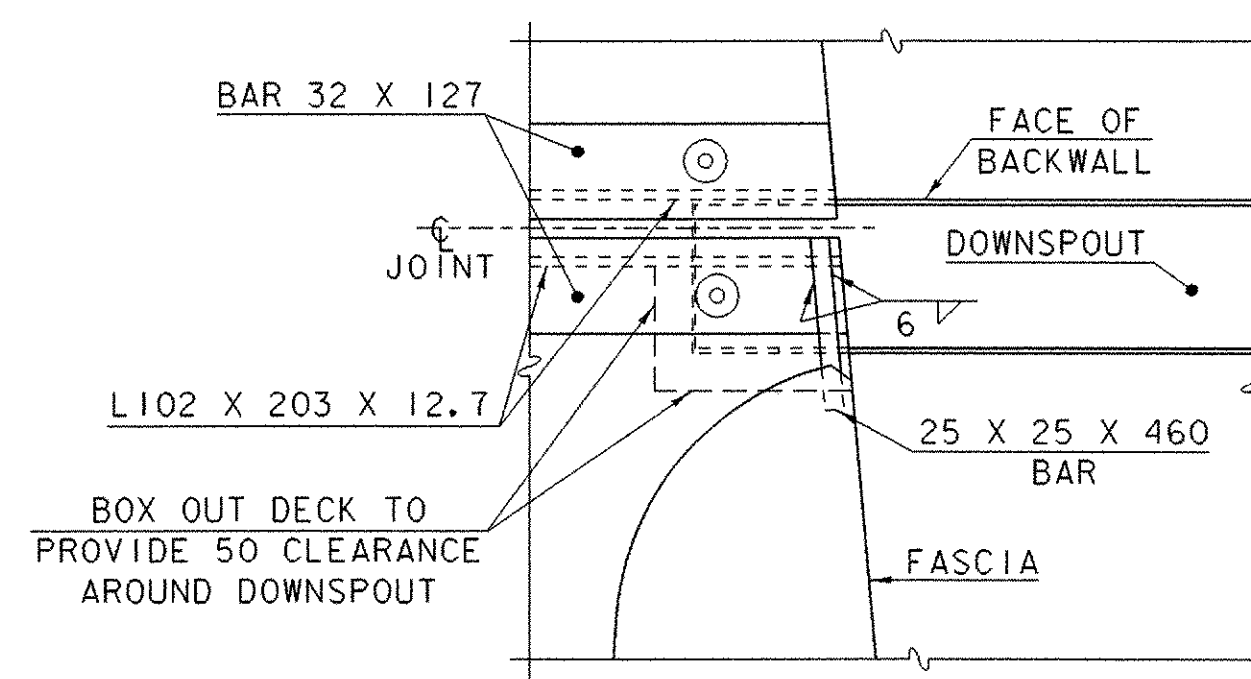
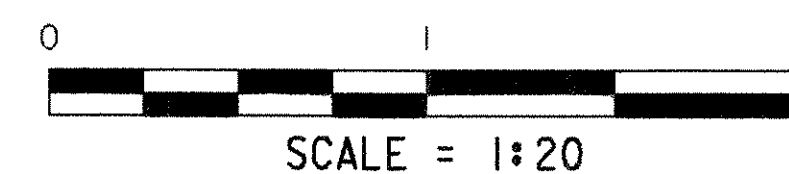
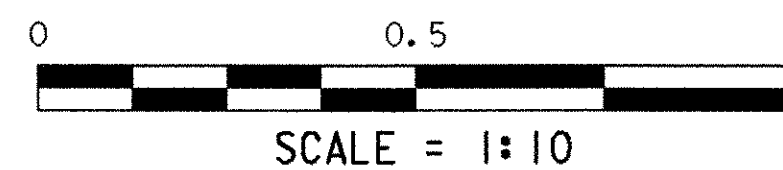


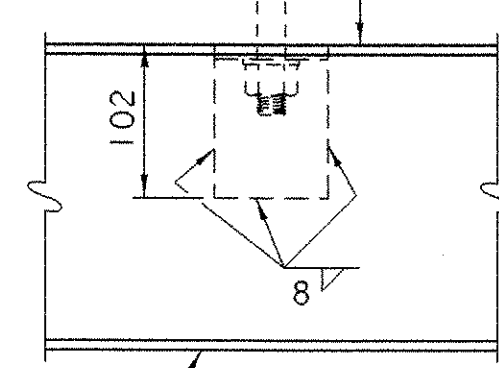
EXPANSION JOINT PLAN AT ABUTMENT NO. 1



DETAIL "A"



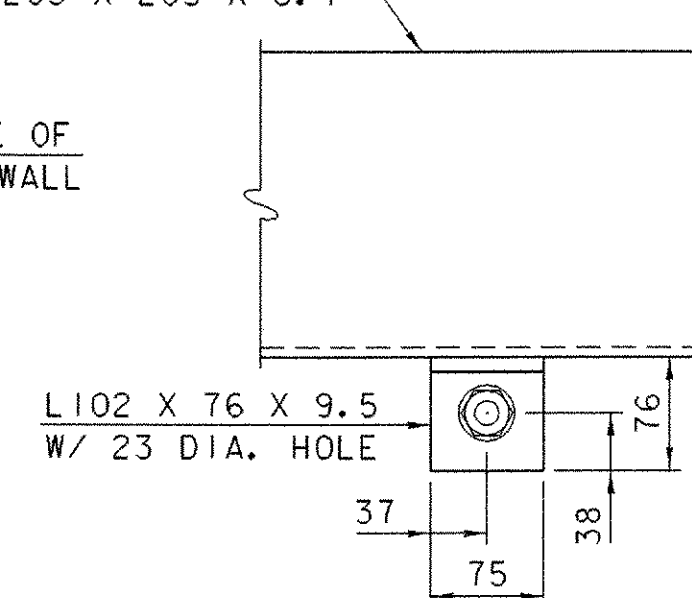
M20 DIA. X 230 LONG  
EXPANSION ANCHOR BOLT  
WITH 1 NUT AND WASHER  
(TYP.)



PLAN

MODIFIED DOWNSPOUT  
TS 203 X 203 X 6.4

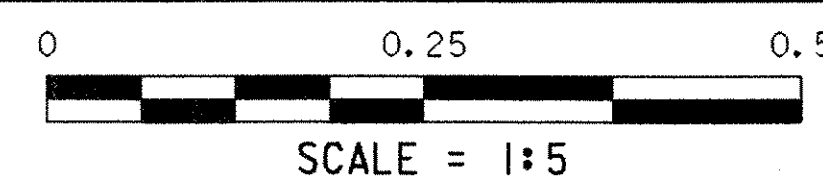
FACE OF  
BACKWALL



ELEVATION

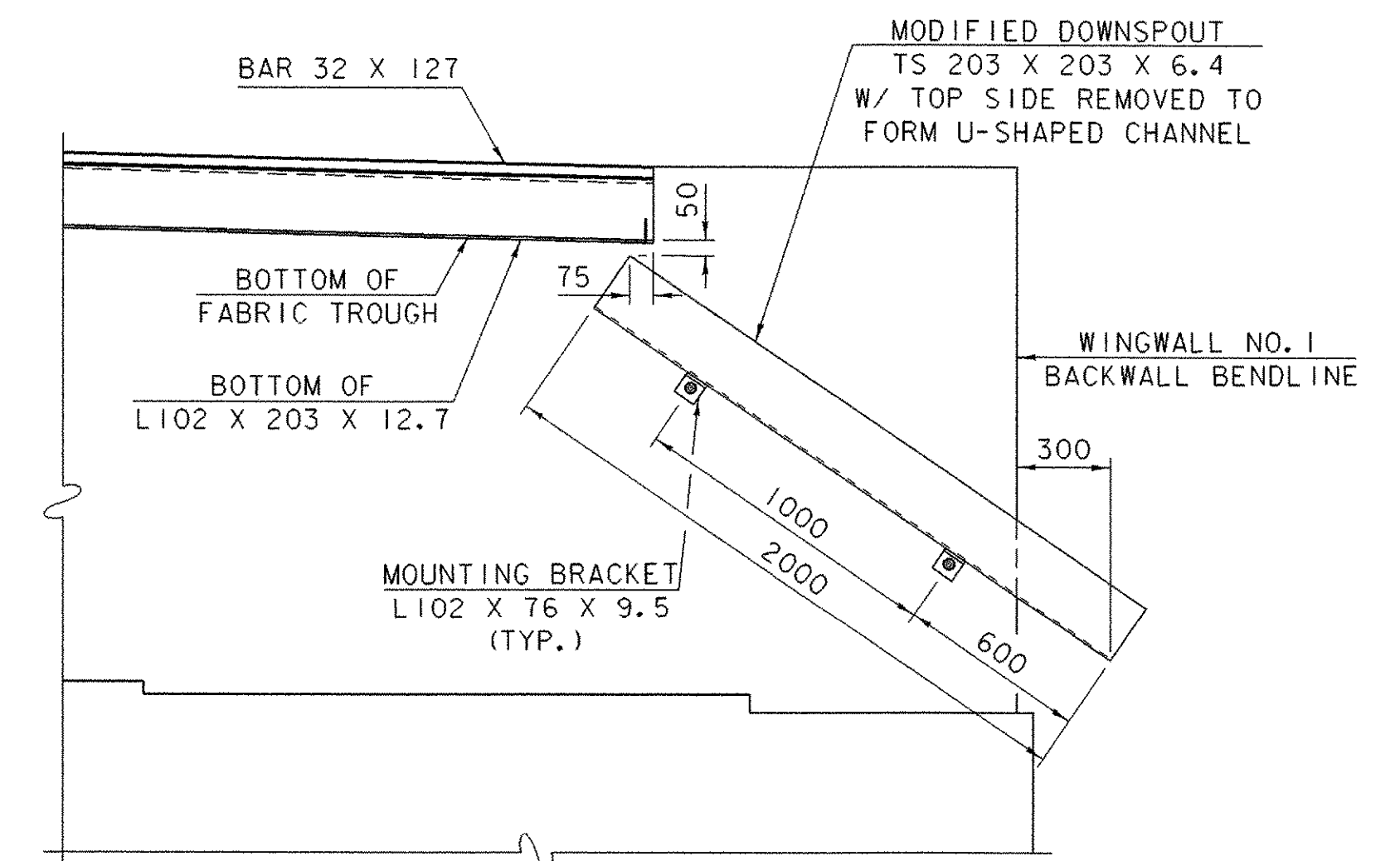
MODIFIED DOWNSPOUT  
TS 203 X 203 X 6.4

DOWNSPOUT MOUNTING BRACKET DETAILS

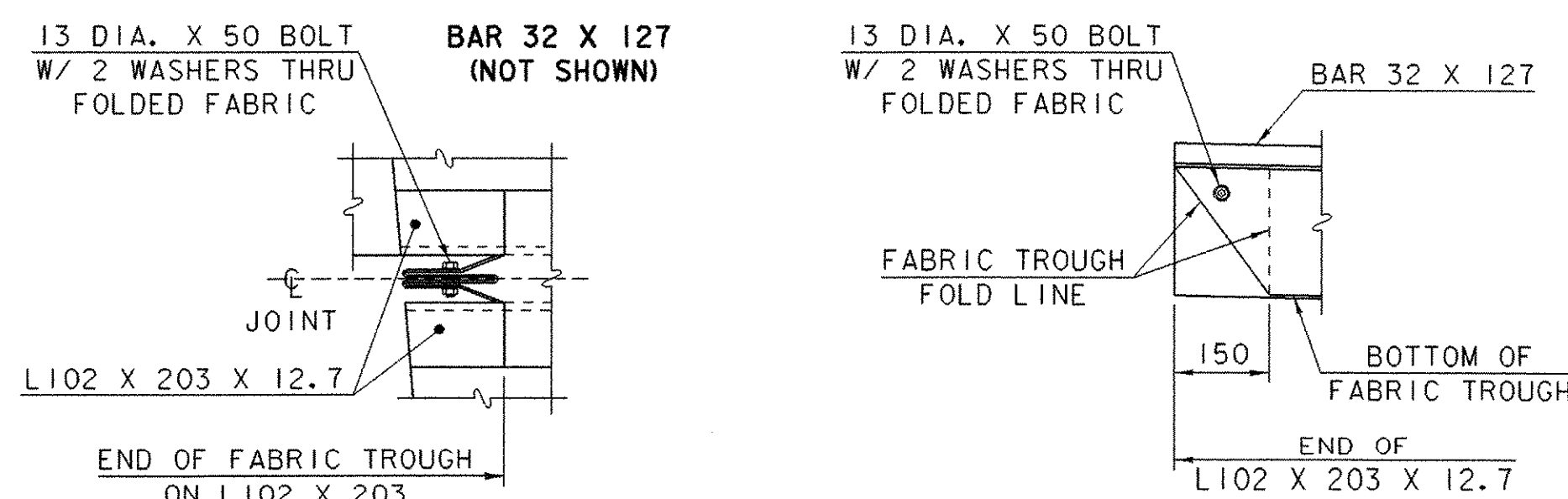
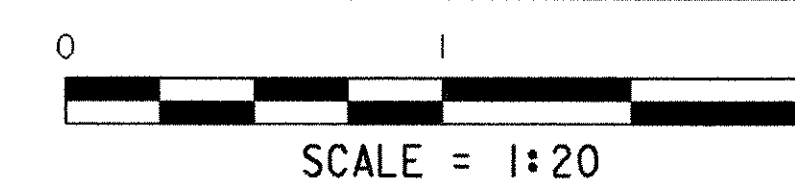


DOWNSPOUT NOTES

- HOLLOW STRUCTURAL STEEL TUBING SHALL CONFORM TO ASTM A500 OR A501.
- ALL PLATES, BARS, AND ANGLES SHALL CONFORM TO AASHTO M270M/M270 GRADE 250.
- THE DOWNSPOUT SHALL BE GALVANIZED IN ACCORDANCE WITH AASHTO M111M/M111 AFTER FABRICATION.
- ALL BOLTS AND RELATED HARDWARE SHALL BE ASTM F568M, CLASS 4.6 AND SHALL BE GALVANIZED IN ACCORDANCE WITH AASHTO M232M/M232.
- ANY PLACE WHERE GALVANIZING HAS BEEN REMOVED FROM THE DOWNSPOUT EITHER BY CUTTING, BURNING, WELDING, PLACING, OR ANY OTHER MEANS, REPAIRS SHALL BE MADE IN ACCORDANCE WITH AASHTO M36.
- THE DOWNSPOUT, MOUNTING BRACKETS, ALL ANCHOR BOLTS WITH RELATED HARDWARE, AND INSTALLATION SHALL BE PAID FOR UNDER ITEM 506.55, "STRUCTURAL STEEL (PLATE GIRDER)".



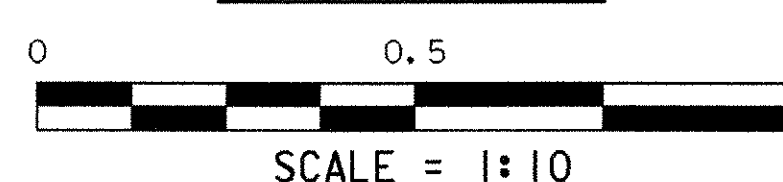
DOWNSPOUT ELEVATION



PLAN

ELEVATION

DETAIL "B"



EXPANSION JOINT PLAN AND DOWNSPOUT DETAILS	
SHEET NAME:	
PROJECT NAME: LEICESTER	HIGHWAY NO.: TH 1
PROJECT NUMBER: BRF 0160(3)S	BRIDGE NO.: 6
	OVER: OTTER CREEK
FILE NAME: /PW/95J288/sj288exp.dgn	PLOT DATE: 17-AUG-2005
PROJECT MANAGER: R. R. WHITCOMB	DRAWN BY: G. ROY
DESIGNED BY: C. CARLSON	IPARM NAME: sj288exh.1
BRIDGE SHEET NUMBER:	SHEET 54 OF 90