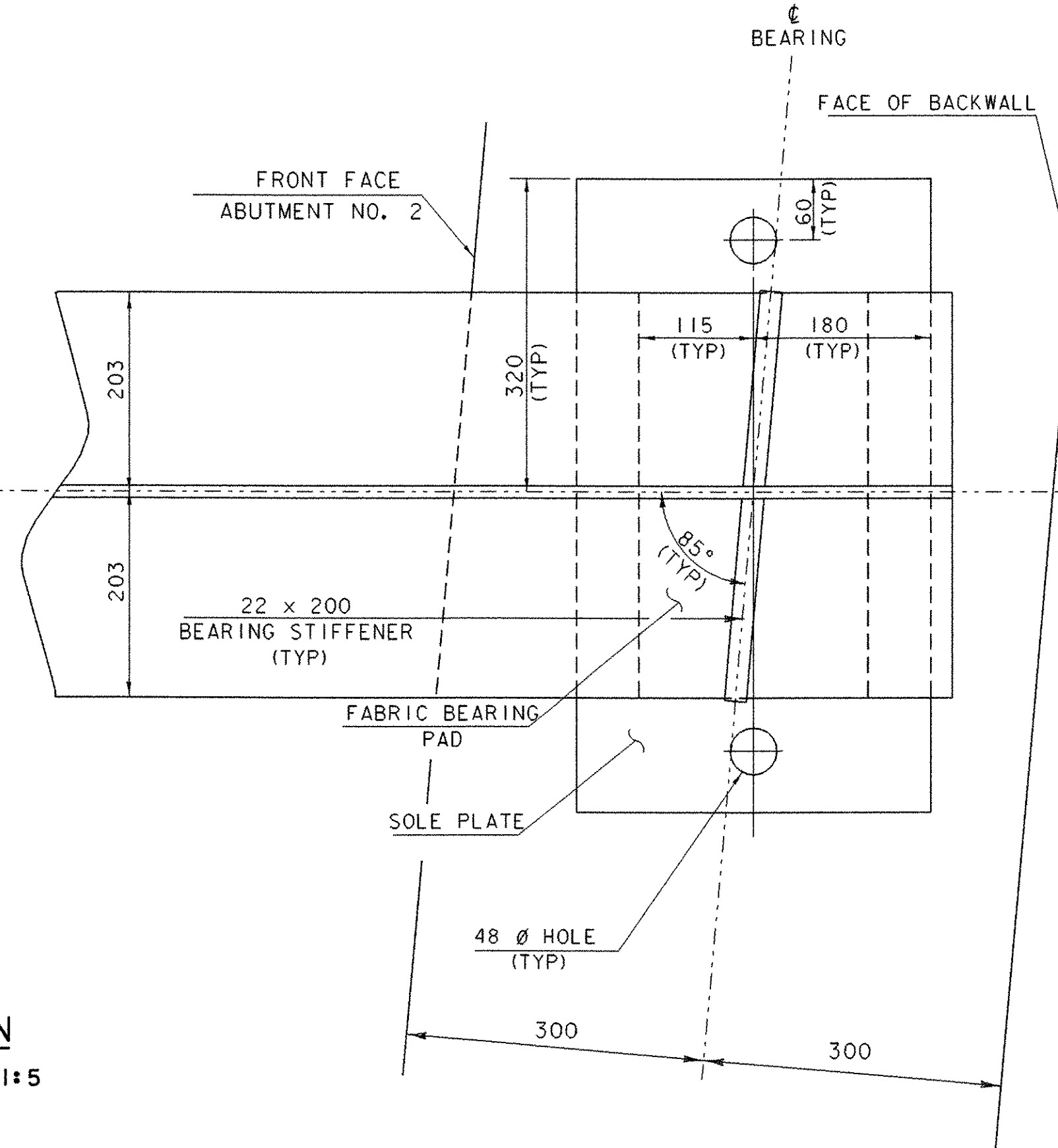
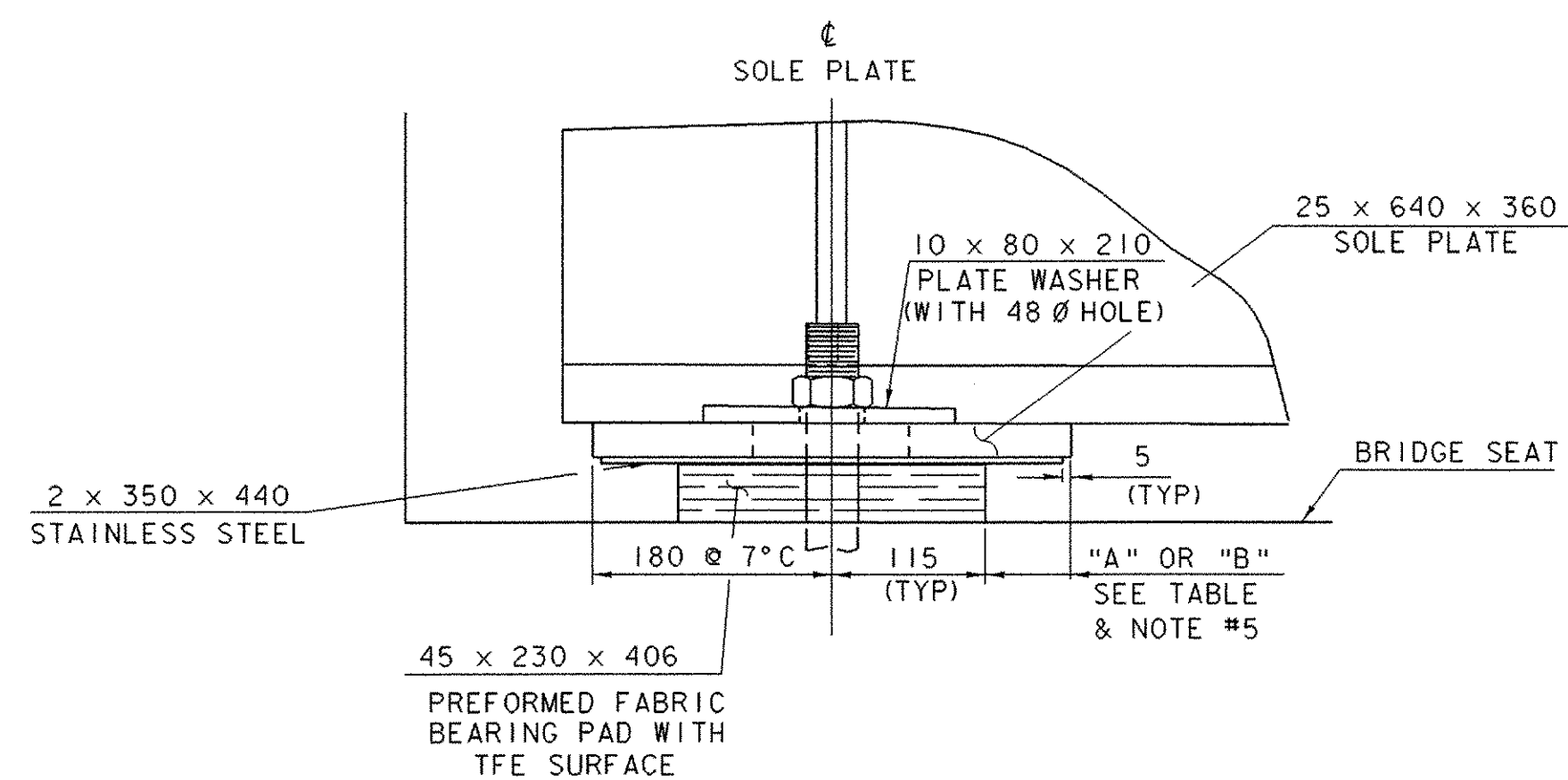


PLAN  
SCALE: 1:5

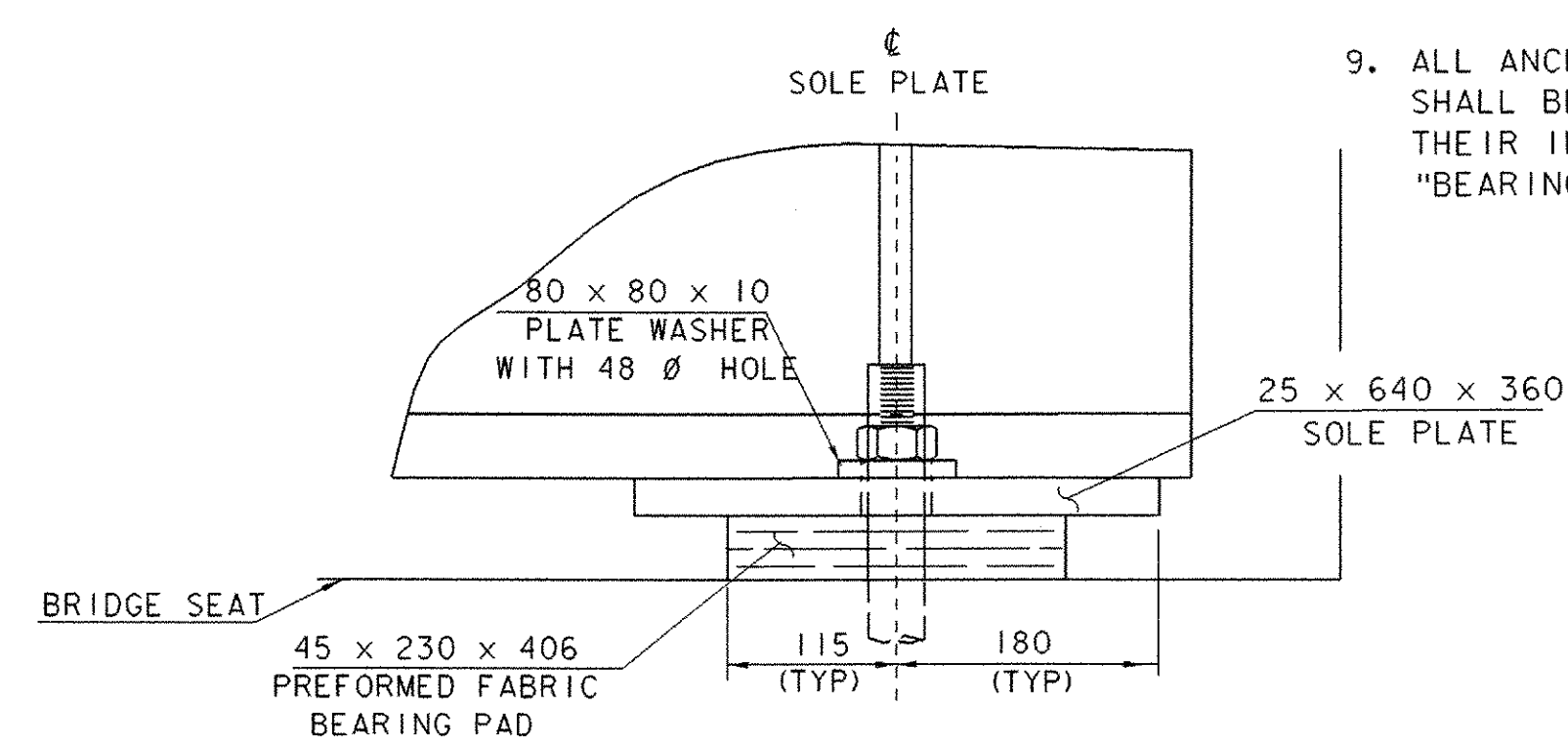


**BEARING NOTES**

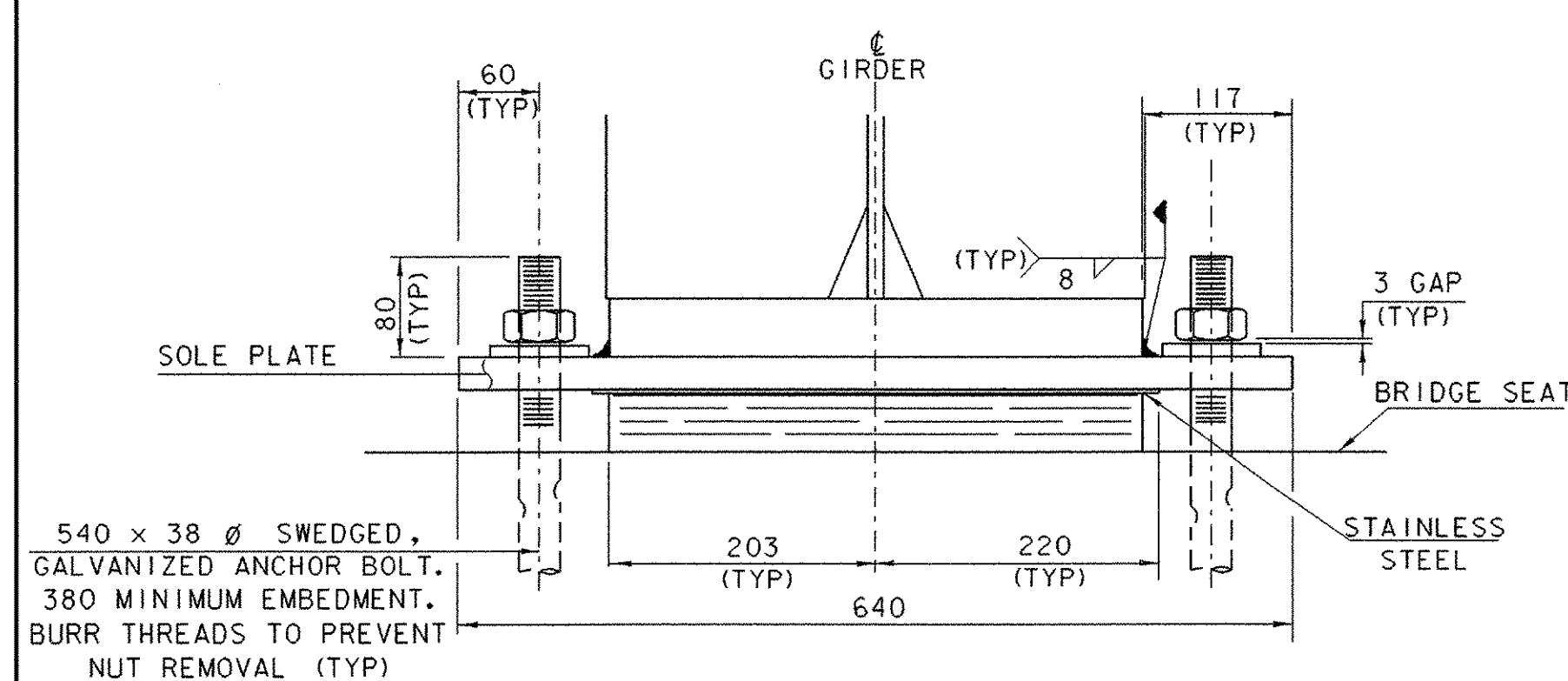
- BEARINGS SHALL BE PAID FOR UNDER ITEM 531.10, "BEARING DEVICE ASSEMBLY (FABRIC)" AND SHALL CONFORM TO SECTIONS 531 AND 731 OF THE STANDARD SPECIFICATIONS.
- SHOP DRAWINGS SHALL BE SUBMITTED AS PER SUBSECTION 531.03 OF THE STANDARD SPECIFICATIONS. THE SUBMITTAL SHALL INCLUDE ASSOCIATED WELDING AND BONDING PROCEDURES.
- DESIGN CRITERIA:
  - MAXIMUM ALLOWABLE BEARING ON CONCRETE OR MASONRY: 7000 kPa
  - MINIMUM ALLOWABLE DESIGN ROTATION: 0.015 RADIAN.
  - DESIGN VERTICAL LOAD: 630 KN
  - DESIGN HORIZONTAL LOAD: MINIMUM 10% OF VERTICAL LOAD.
- THE "B" DISTANCE IS THE FINAL SETTING FOR THE BEARING PAD AFTER THE CONCRETE SLAB, CURB, PAVEMENT, AND BRIDGE RAIL HAVE BEEN PLACED. THE "A" DISTANCE IS FOR SETTING THE BEARING AFTER THE STRUCTURAL STEEL IS ERECTED AND BEFORE THE CONCRETE DECK IS Poured. THE DIFFERENCE IS THE THEORETICAL ELONGATION OF THE BOTTOM FLANGE DUE TO DEAD LOAD DEFLECTION. THE FINAL "B" DISTANCE SHOWN IN THE TABLE MUST BE ATTAINED WITHIN 3 mm.
- THE CONCRETE SURFACE UNDER THE BEARING DEVICE SHALL BE LEVEL.
- ANCHOR BOLTS SHALL HAVE A MINIMUM 380 EMBEDMENT INTO CONCRETE AND SHALL CONFORM TO SUBSECTION 714.08 OF THE STANDARD SPECIFICATIONS.
- ALL STEEL IN BEARING DEVICE ASSEMBLY (EXCEPT STAINLESS) SHALL BE AASHTO M270M/M270, GR 250.
- ALL BEARING DEVICES SHALL BE GALVANIZED OR METALIZED AS PER SUBSECTIONS 531.04 (b) AND 506.15 OF THE STANDARD SPECIFICATIONS. IF THE BEARINGS ARE METALIZED, THEY SHALL BE SEALED WITH AN APPROVED SEALER AS SPECIFIED IN SUBSECTION 506.15 (b) OF THE STANDARD SPECIFICATIONS. AREAS OF GALVANIZING OR METALIZING DAMAGED BY FIELD WELDING OR HANDLING SHALL BE REPAIRED IN CONFORMANCE WITH SUPPLEMENTAL SPECIFICATION 513.
- ALL ANCHOR BOLTS, NUTS, AND WASHERS SHALL BE GALVANIZED. ALL WASHERS SHALL BE 10 PLATE MINIMUM. PAYMENT FOR ANCHOR BOLTS, NUTS, WASHERS AND THEIR INSTALLATION SHALL BE INCLUDED IN THE UNIT BID PRICE FOR ITEM 531.10, "BEARING DEVICE ASSEMBLY (FABRIC)".



SIDE ELEVATION  
SCALE: 1:5

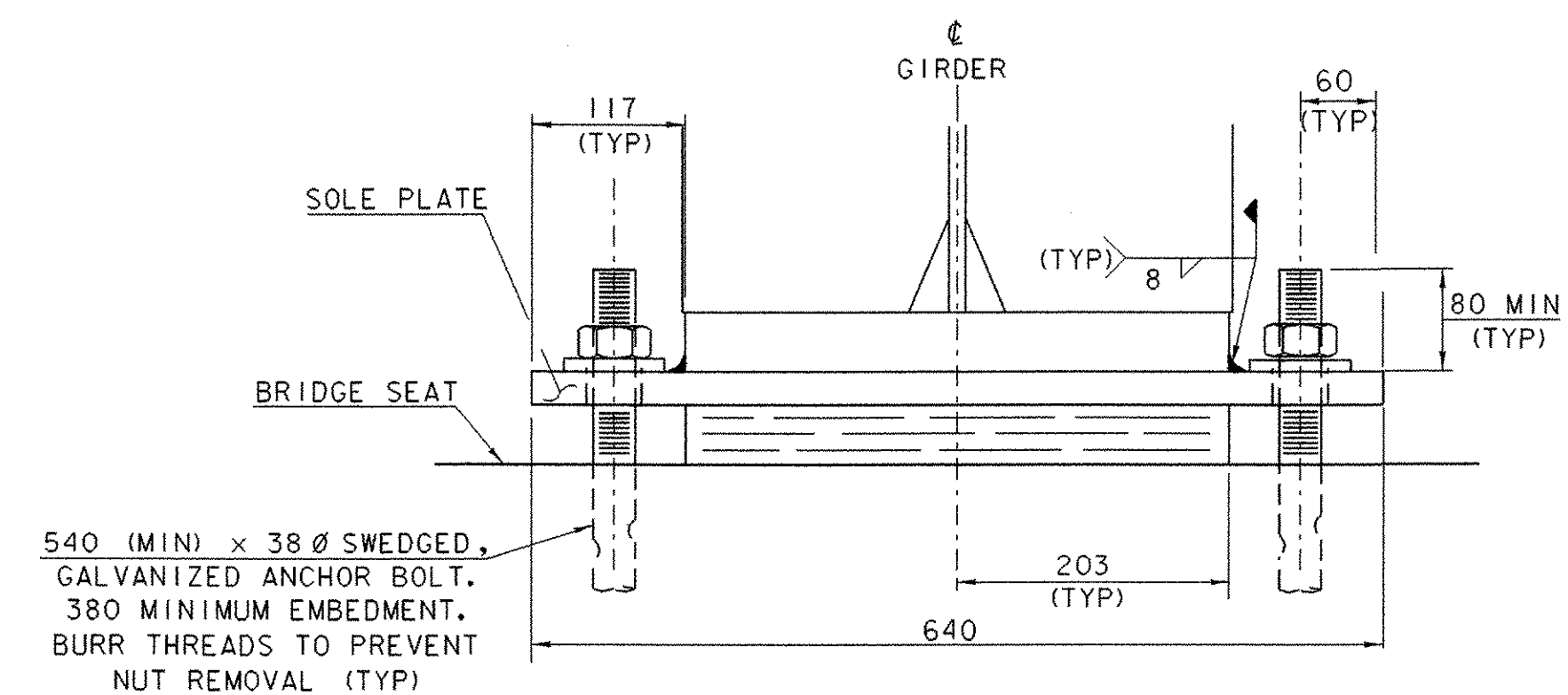


TEMP	"A" DIST	"B" DIST
-34°C	79	95
-26°C	76	92
-18°C	73	89
-9°C	70	86
-1°C	67	83
7°C	64	79
16°C	60	76
24°C	57	73
32°C	54	70
41°C	51	67
49°C	48	64



EXPANSION BEARING @ ABUT NO. 1

FRONT VIEW  
SCALE: 1:5



FIXED BEARING @ ABUT NO. 2

SHEET NAME: BEARING DETAILS		
PROJECT NAME: LEICESTER	HIGHWAY NO.: TH 1	
PROJECT NUMBER: BRF 0160(3)S	BRIDGE NO.: 6	
	OVER: OTTER CREEK	
FILE NAME: /PW/95j288/sj288sup.dgn	PLOT DATE: 17-AUG-2005	
PROJECT MANAGER: R. R. WHITCOMB	DRAWN BY: T. FILLBACH	
DESIGNED BY: C. CARLSON	IPARM NAME: sj288brg.1	
BRIDGE SHEET NUMBER:	SHEET 52 OF 90	