

POE
Sta 2+079.949

END SIDELINE APPROACH
Sta 2+070

ARCHAEOLOGICAL FENCING
SENSITIVE AREA
KEEP OUT

PT
Sta 2+046.851

MATCH LINE
STA 1+160

PI Sta 2+029.850 BK =
Sta 2+029.812 AH
 $\Delta = 3^\circ$ RT

PC
Sta 2+012.813

BEGIN SIDELINE APPROACH
Sta 2+004.200
REMOVE EXISTING
460 CGMP (POOR)

PC
Sta 1+129.256

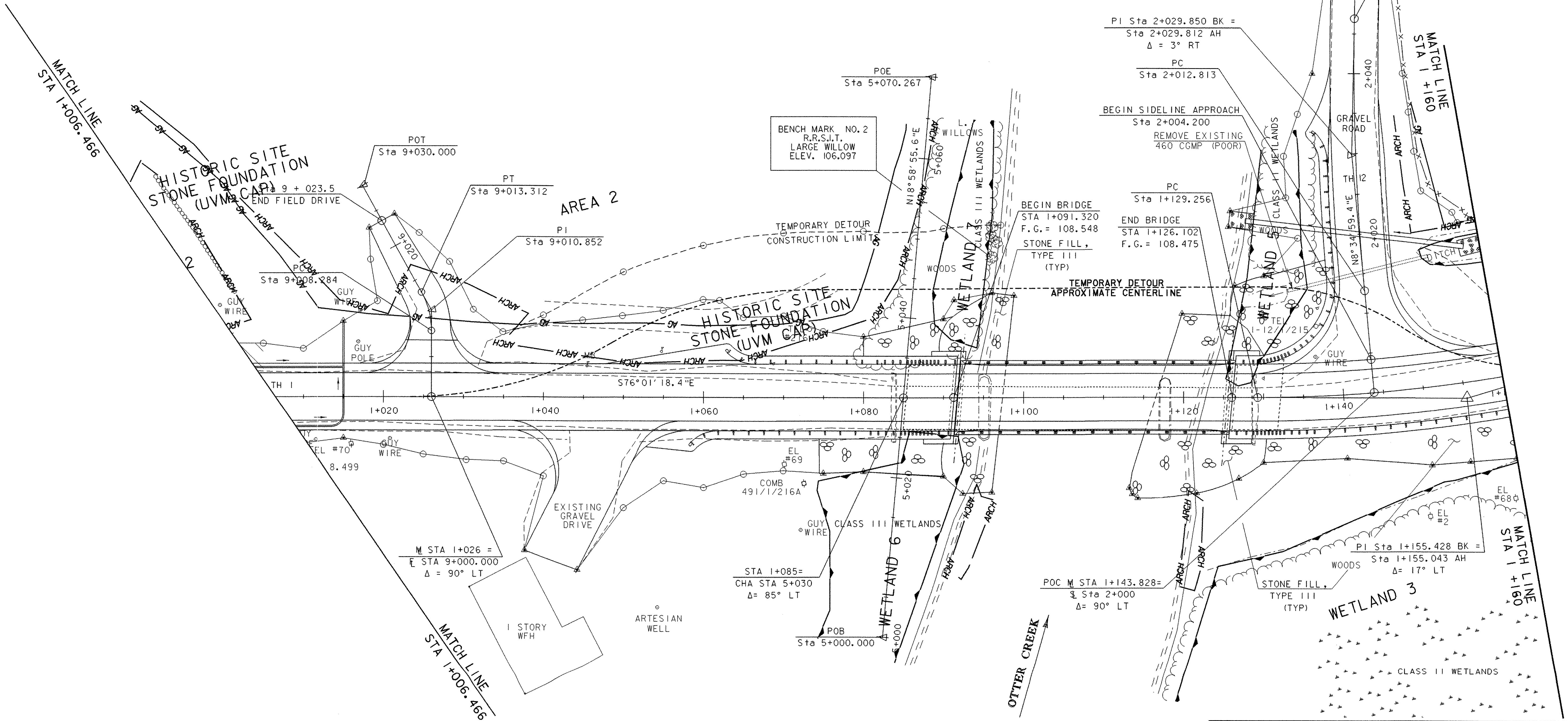
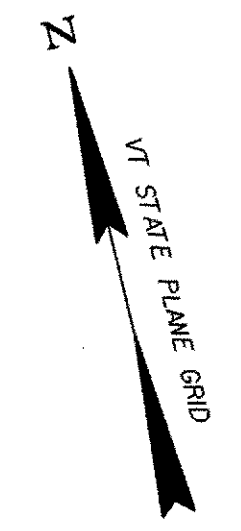
BEGIN BRIDGE
STA 1+091.320
F.G. = 108.548
STONE FILL,
TYPE III
(TYP)

END BRIDGE
STA 1+126.102
F.G. = 108.475

TEMPORARY DETOUR
APPROXIMATE CENTERLINE

BENCH MARK NO. 2
R.R.S.T.
LARGE WILLOW
ELEV. 106.097

POE
Sta 5+070.267



SHEET NAME: RESOURCE LAYOUT #2	
PROJECT NAME: LEICESTER	HIGHWAY NO.: FAS 0160
PROJECT NUMBER: BRF 0160(3)S	BRIDGE NO.: 6
	OVER: OTTER CREEK
FILE NAME: 95J288\structures\sj288bdr.dgn	PLOT DATE: 17-AUG-2005
PROJECT MANAGER: R. R. WHITCOMB	DRAWN BY: J. GILMORE
DESIGNED BY: C. CARLSON	IPARM NAME: sj088r2.1
BRIDGE SHEET NUMBER:	SHEET 19 OF 90

