

**CONSTRUCT DRIVES**

DRIVE LEFT  
STA 1+026.000 (GRAVEL w/4000 PAVED APRON)

DRIVE RIGHT  
STA 1+046.500 (PAVED)

GUARD RAIL HEAVY DUTY STEEL BEAM  
1+057.431 STA ~~1+056.203~~ - STA 1+080.901 RT  
1+062.072 STA 1+062.808 - STA 1+081.732 LT  
STA 1+136.198 - STA 1+160.000 RT  
STA 2+007.545 - STA 2+032.876 LT

ANCHOR FOR STEEL BEAM RAIL  
STA 1+060.000 RT  
STA 1+065.000 LT  
STA 2+031.000 LT

BRIDGE RAILING - NETC 2 RAIL  
STA 1+088.521 - STA 1+128.734 RT  
STA 1+089.350 - STA 1+129.593 LT

BRIDGE APPROACH SECTION - NETC 2 RAIL  
STA 1+080.901 - STA 1+088.521 RT  
STA 1+081.732 - STA 1+089.350 LT  
STA 1+128.734 - STA 1+136.198 RT  
STA 1+129.593 - STA 2+007.545 LT

RELOCATE MAILBOX, SINGLE SUPPORT  
STA 1+056 LT  
1+035 LT

150mm UNDERDRAIN CARRIER PIPE  
STA 1+015.000 RT - STA 1+015.000 LT

PIPE OPTIONS @ STA 2+020 WITH 3000 x 2000 STONE FILL, TYPE I PAD AT INLET & TYPE III AT OUTLET

600 PCCSP x 27.43m  
600 CAAP x 27.43m  
600 CPEP x 27.43m

POE  
Sta 2+079.949

CURVE DATA  
Radius = 300.000  
 $\Delta = 6^{\circ}30'03.1''$   
Length = 34.038  
Tangent = 17.038  
Chord = 34.020  
External = 0.483  
Middle Ordinate = 0.483  
Bank = Normal

PI Sta 2+029.850 BK =  
Sta 2+029.812 AH  
 $\Delta = 3^{\circ}$  RT  
PC  
Sta 2+012.813

BEGIN SIDELINE APPROACH  
Sta 2+004.200  
REMOVE EXISTING  
460' COMP (POOR)

END BRIDGE  
STA 1+126.102  
F.G. = 108.475

BEGIN BRIDGE  
STA 1+091.320  
F.G. = 108.548  
STONE FILL  
TYPE III (TYP)

TEMPORARY DETOUR APPROXIMATE CENTERLINE

POC M STA 1+143.820 =  
Sta 2+000  
 $\Delta = 90^{\circ}$  LT

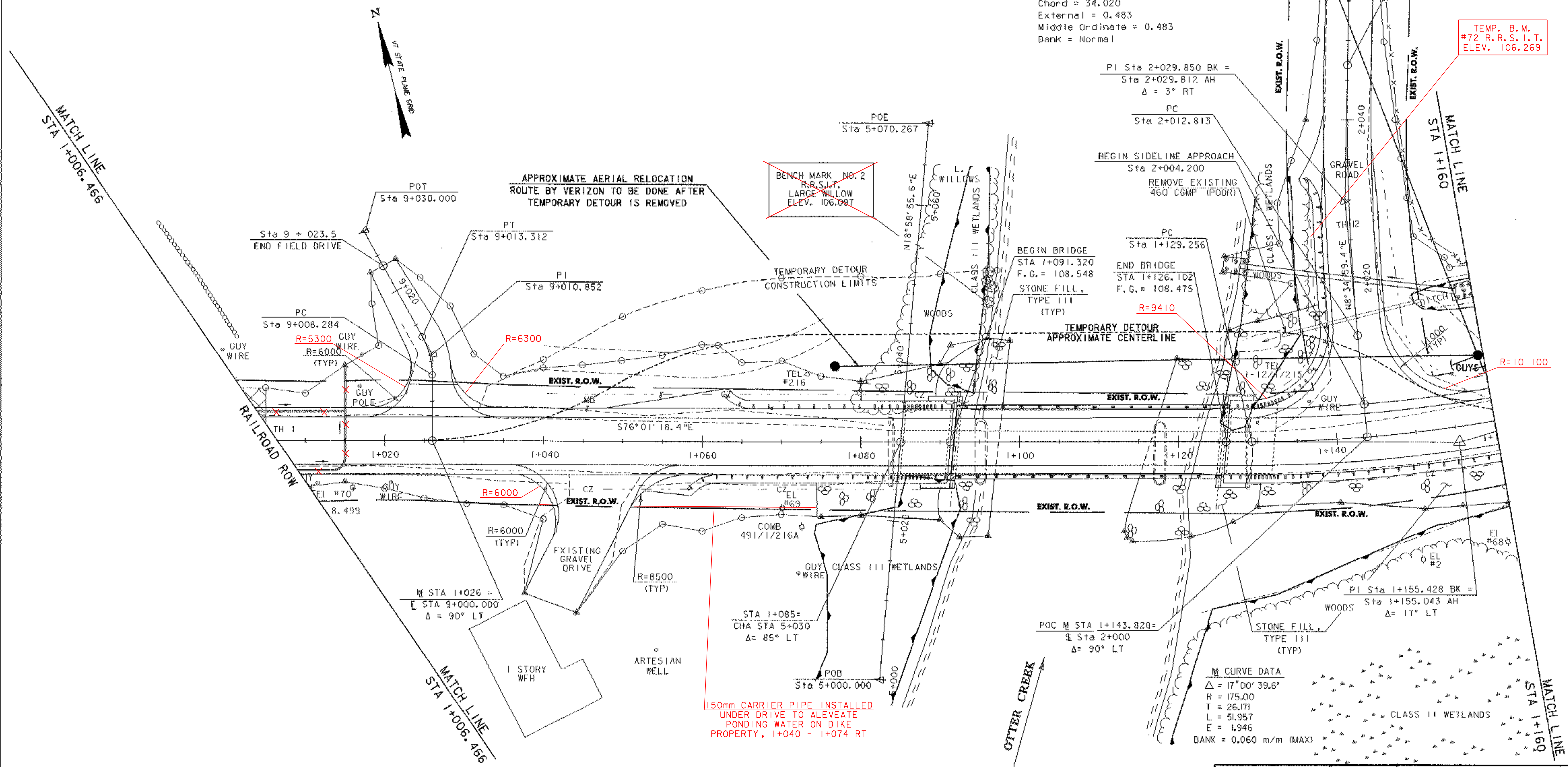
CURVE DATA  
 $\Delta = 17^{\circ}00'39.6''$   
R = 175.00  
T = 26.171  
L = 51.957  
E = 1.946  
BANK = 0.060 m/m (MAX)

END SIDELINE APPROACH  
Sta 2+070

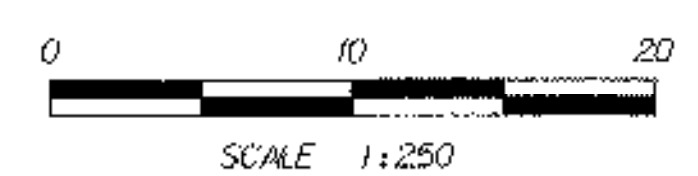
ARCHAEOLOGICAL FENCING SENSITIVE AREA KEEP OUT

PT  
Sta 2+046.851

TEMP. B.M.  
#72 R.R.S.I.T.  
ELEV. 106.269



SEE LINE STRIPING AND SIGN LAYOUT ON SHEET 37.



SHEET NAME: <b>PLAN LAYOUT #2</b>	
PROJECT NAME: <b>LEICESTER</b>	HIGHWAY NO.: <b>FAS 0160</b>
PROJECT NUMBER: <b>BRF 0160(3)S</b>	BRIDGE NO.: <b>6</b>
	OVER: <b>OTTER CREEK</b>
FILE NAME: 95\288\Structures\5\288bdr.dgn	PLOT DATE: 17-AUG-2005
PROJECT MANAGER: <b>R. R. WHITCOMB</b>	DRAWN BY: <b>J. GILMORE</b>
DESIGNED BY: <b>C. CARLSON</b>	IPARM NAME: sj088ps2.1
BRIDGE SHEET NUMBER:	SHEET 12 OF 90