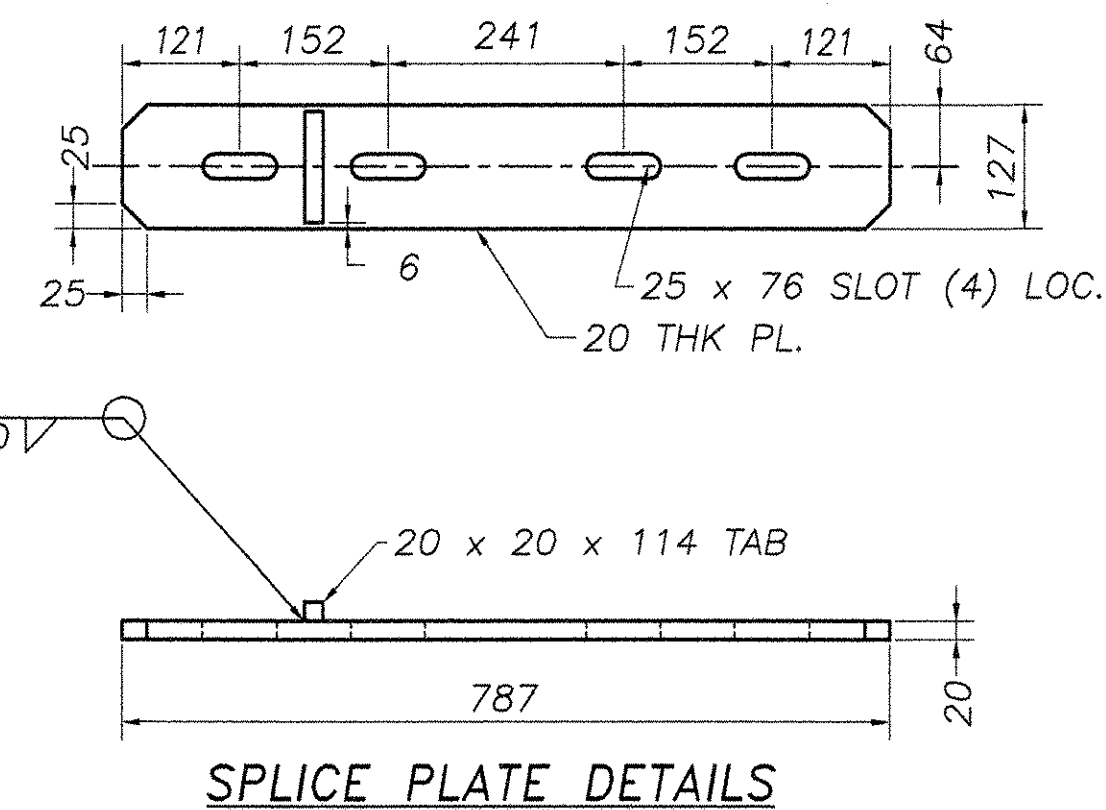
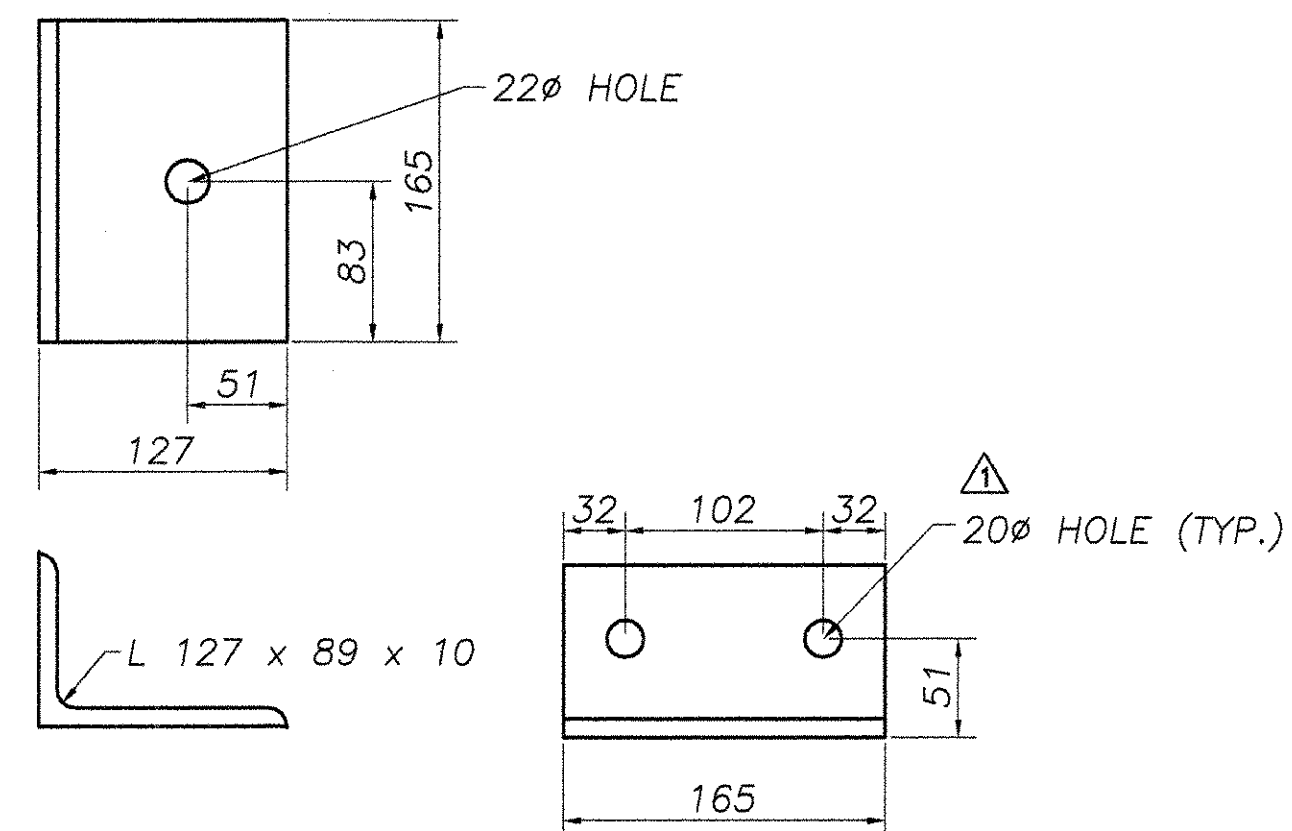


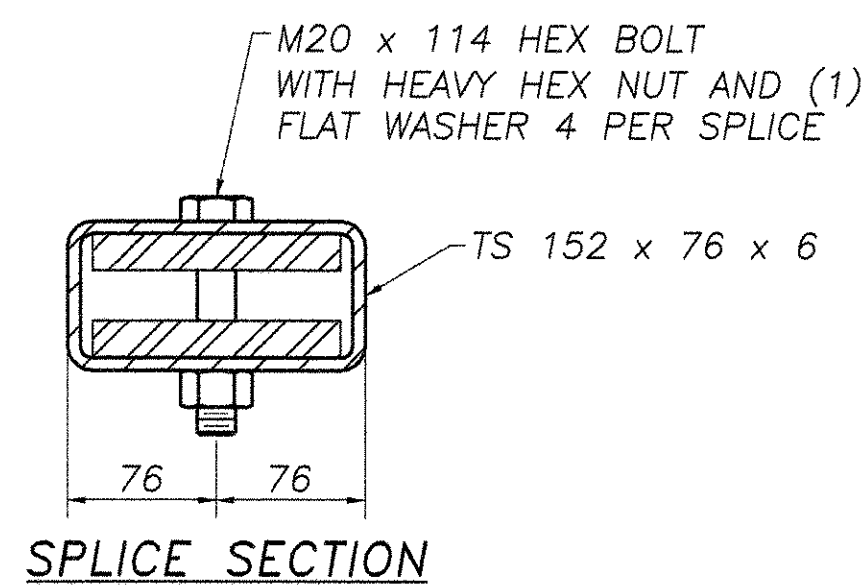
RAILING ELEVATION



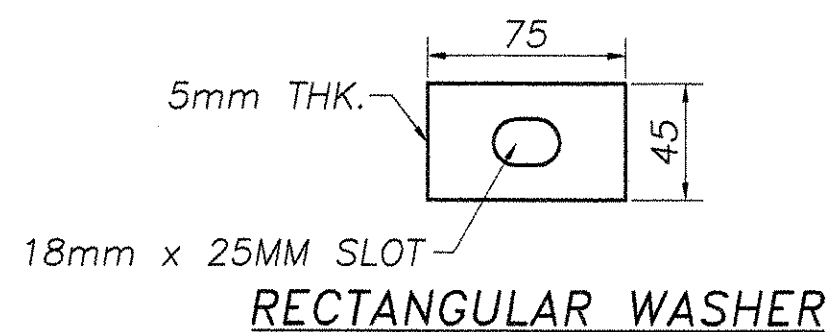
SPLICE PLATE DETAILS



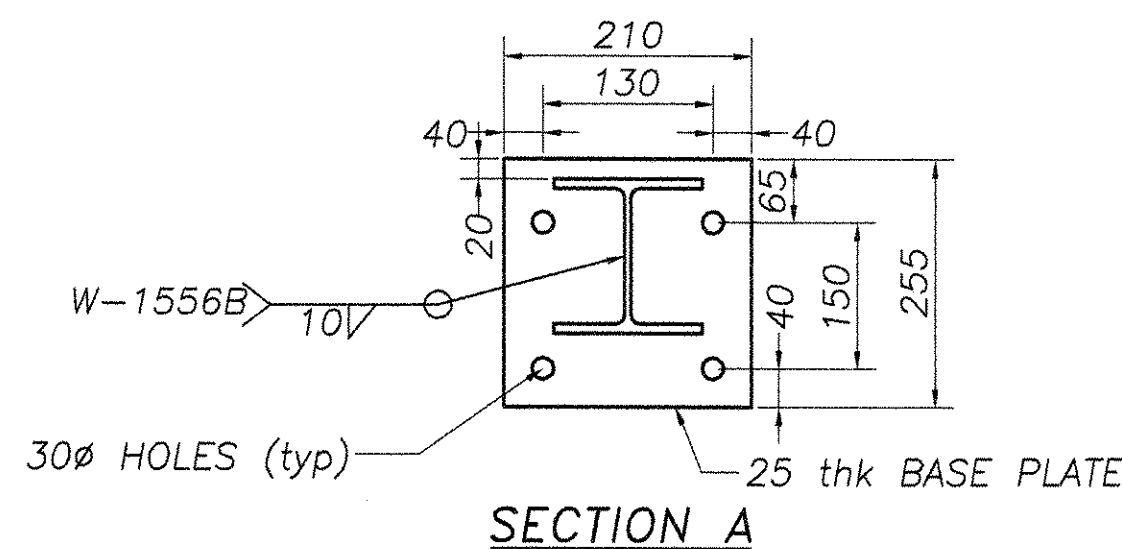
SHELF BRACKET



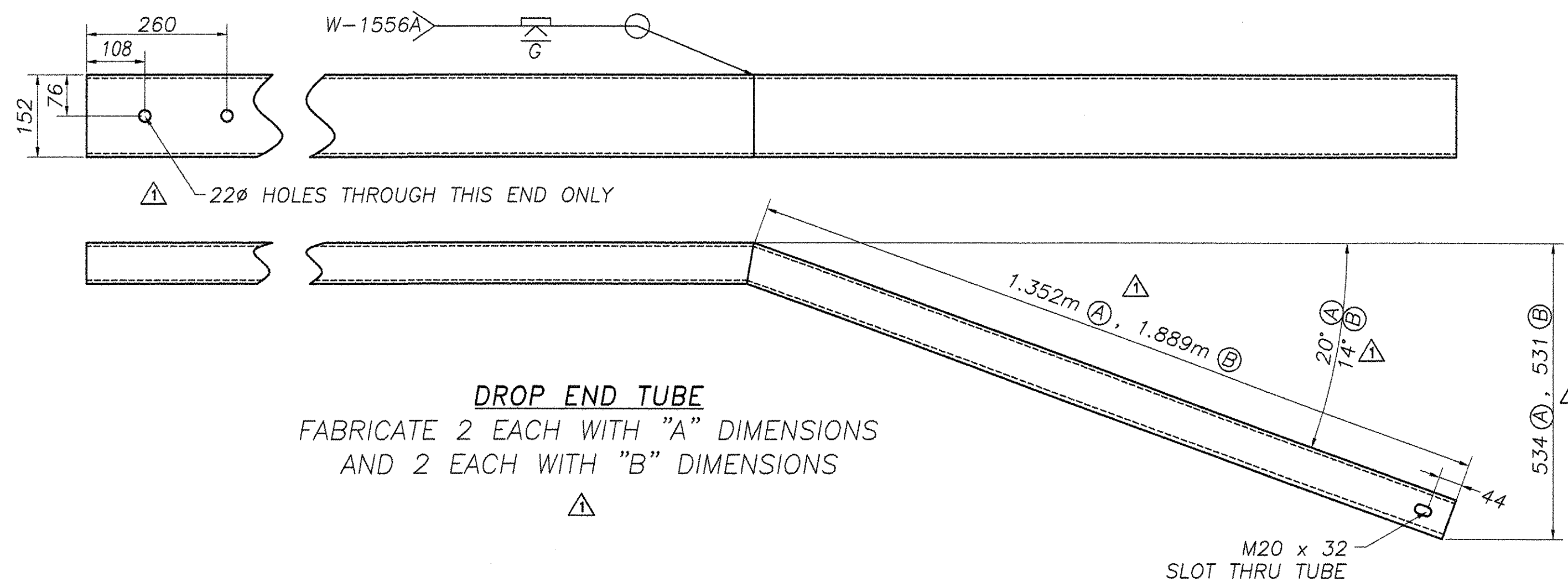
SPLICE SECTION



RECTANGULAR WASHER

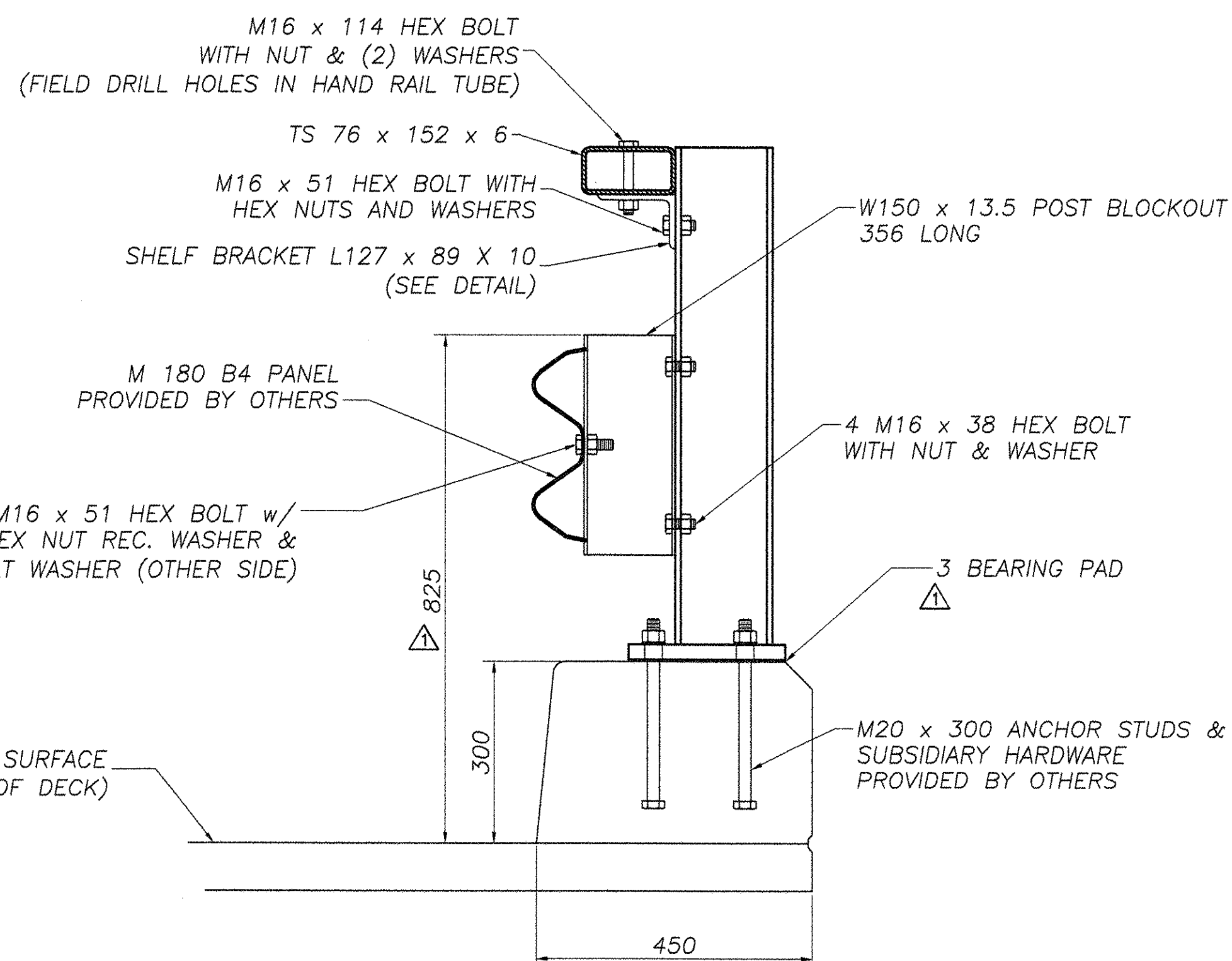


SECTION A

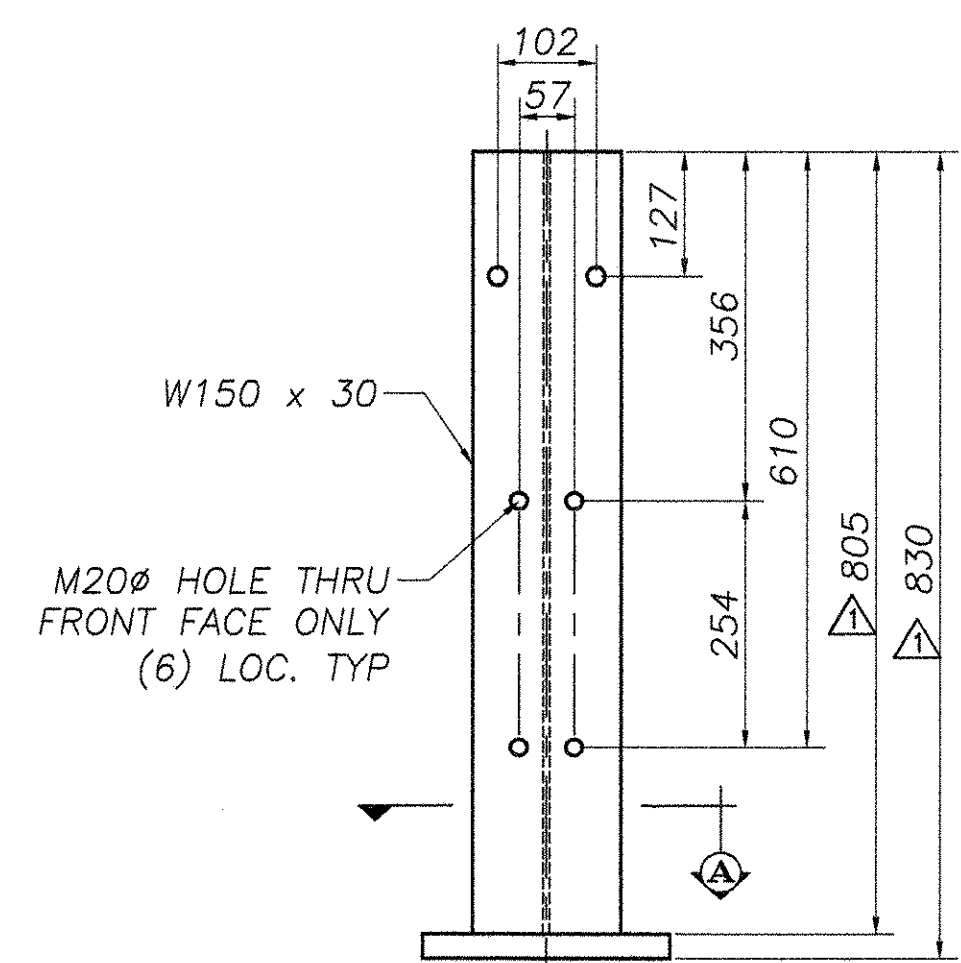


DROP END TUBE

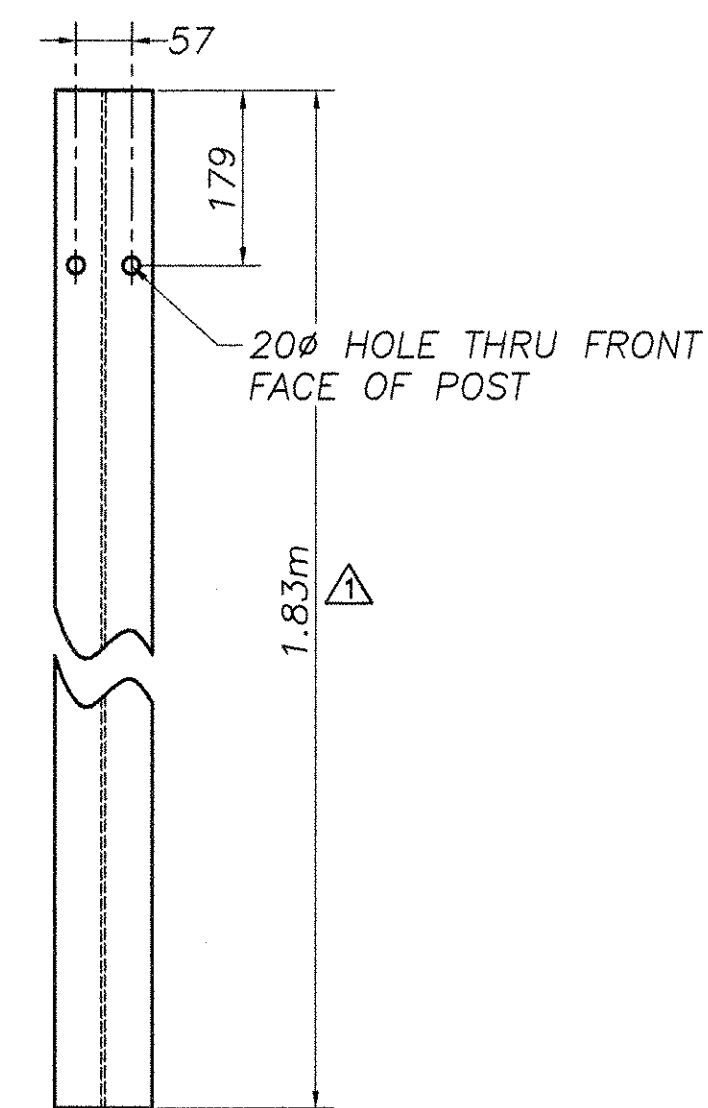
FABRICATE 2 EACH WITH "A" DIMENSIONS AND 2 EACH WITH "B" DIMENSIONS



POST ASSEMBLY DETAIL

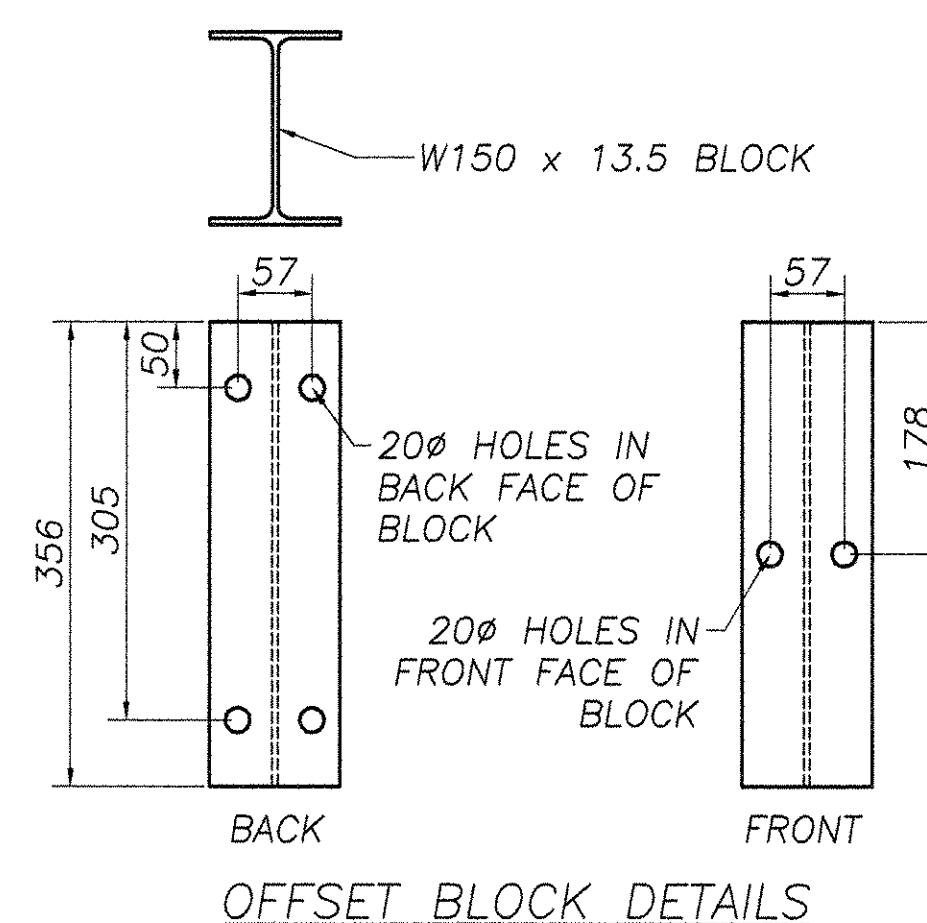


CURB MOUNTED PEDESTAL POST



1st DRIVEN POST

W150 x 13.5



OFFSET BLOCK DETAILS

NOTES

- SEE STANDARD G-1dM & SB-R6-82M FOR ADDITIONAL DETAILS OF STEEL BEAM GUARD RAIL AND STANDARD SB-R4a-82 FOR ADDITIONAL DETAILS OF BOX BEAM GUARD RAIL
- ANCHOR BOLTS, NUTS, AND WASHERS SHALL BE GALVANIZED AND CONFORM TO SECTION 714.07 **\*\*BY OTHERS\*\***
- BRIDGE RAIL TYPES A, C & E: HEAVY DUTY STEEL BEAM RAIL SHALL BE AASHTO M180, CLASS B TYPE-II. POST AND BRACKETS, AS WELL AS PLATE AND SPECIAL WASHERS, SHALL BE AASHTO M223/M223M STEEL. BOLTS SHALL BE ASTM A307. ALL MATERIAL SHALL BE GALVANIZED AFTER FABRICATION TO AASHTO M111 OR M232 (HARDWARE). PRIOR TO GALV, GRIND ALL EDGES OF SHAPES AND PLATES TO MIN. 2mm RADIUS
- BRIDGE RAIL TYPE B & D: HEAVY DUTY STEEL BEAM RAIL SHALL BE AASHTO M180, CLASS B TYPE 4 **\*\*BY OTHERS\*\***. POSTS AND BRACKETS AS WELL AS PLATE AND SPECIAL WASHERS, SHALL BE AASHTO M222/M222M STEEL.
- ALL POSTS SHALL BE SET TO NORMAL GRADE
- BRIDGE APPROACH RAIL HEIGHT SHALL BE TRANSITIONED TO NORMAL ROADWAY HEIGHT IN 7.62m
- APPROACH RAILING SHALL BE HEAVY DUTY STEEL BEAM AS DETAILED ON THE CONTRACT PLANS.
- FOR THE TYPE A,B,C, OR D BRIDGE RAILING, THE TRANSITION POST SHALL HAVE AN OFFSET BLOCK AND BE LOCATED AS CLOSE AS PRACTICAL TO THE MID POINT BETWEEN THE BRIDGE END POST AND APPROACH RAIL POST I.
- SPLICES SHALL LAP IN DIRECTION OF TRAFFIC FLOW
- SEE STANDARD SHEET G-1M FOR DELINEATOR DETAILS AND PLACEMENT.
- ERECT DELINEATOR ON EVERY FIFTH POST OR APPROXIMATELY 9m APART. PAYMENT SHALL BE SUBSIDIARY TO OTHER ITEMS.
- THE DROP WEIGHT TEAR TEST IN SECTION 732 SHALL NOT APPLY TO THE STRUCTURAL TUBING.



**HIGHWAY SAFETY CORP.**  
GLASTONBURY, CT

ITEM # 525.42 CURB MOUNTED HDSB w/ HAND RAILING	DRAWN C CRAMER
TOWN OF CLARENDEN	CHECKED
COUNTY OF RUTLAND	DATE 7/10/06
ROUTE NO. TH 16, CLASS 3 BRIDGE NO. 24	SCALE NTS
	HSC REFERENCE NO. 1556
GENERAL CONTRACTOR	SIZE D REVISION
SUB CONTRACTOR FR LAFAYETTE, INC	SHEET NO. 2 of 2

REVISIONS		
No.	Remarks	Date
0	Initial submittal	7/12/06
1	VT DOT Corrections	8/08/06

VTTRANS RECEIVED  
AUG 21 2006

RECORDED PLANS