

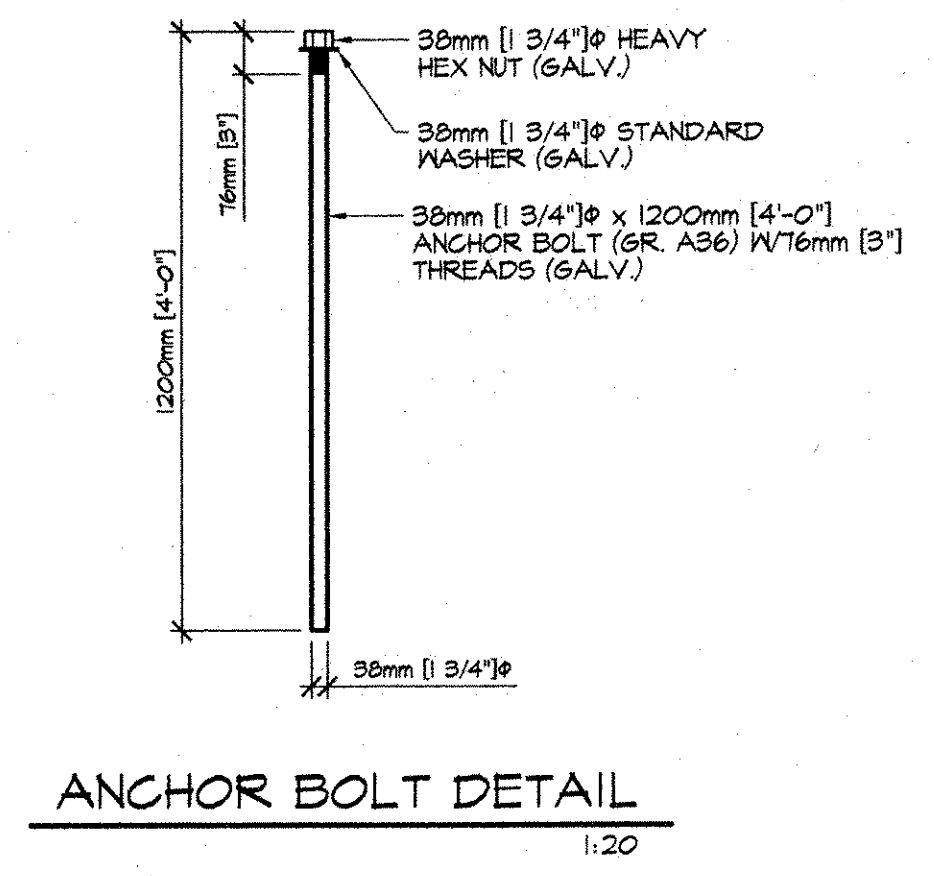
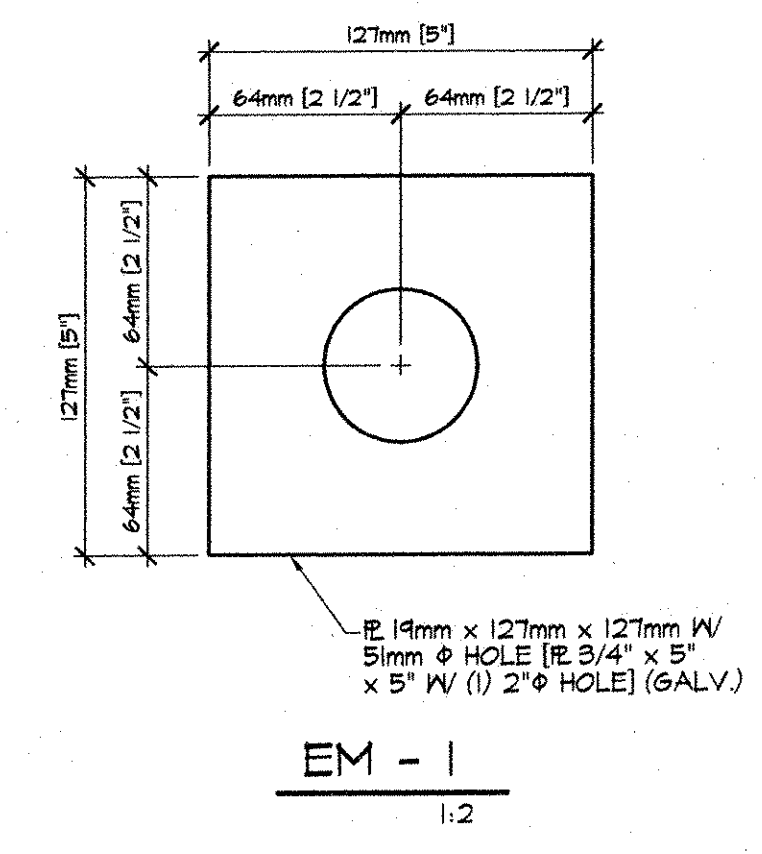
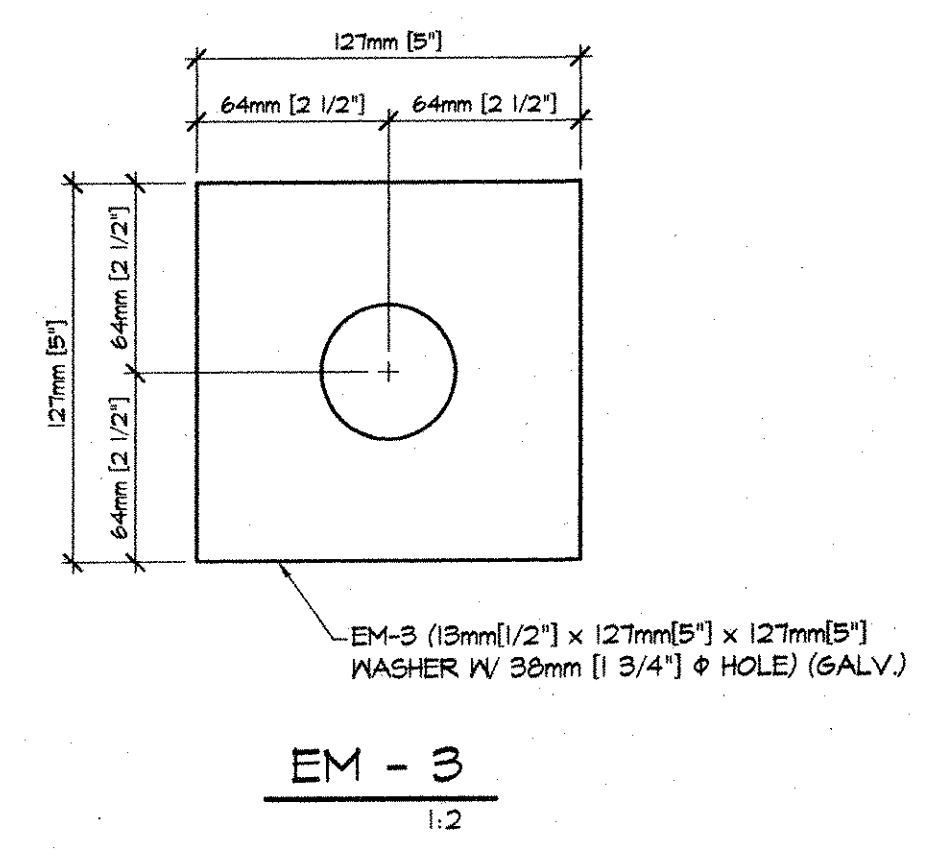
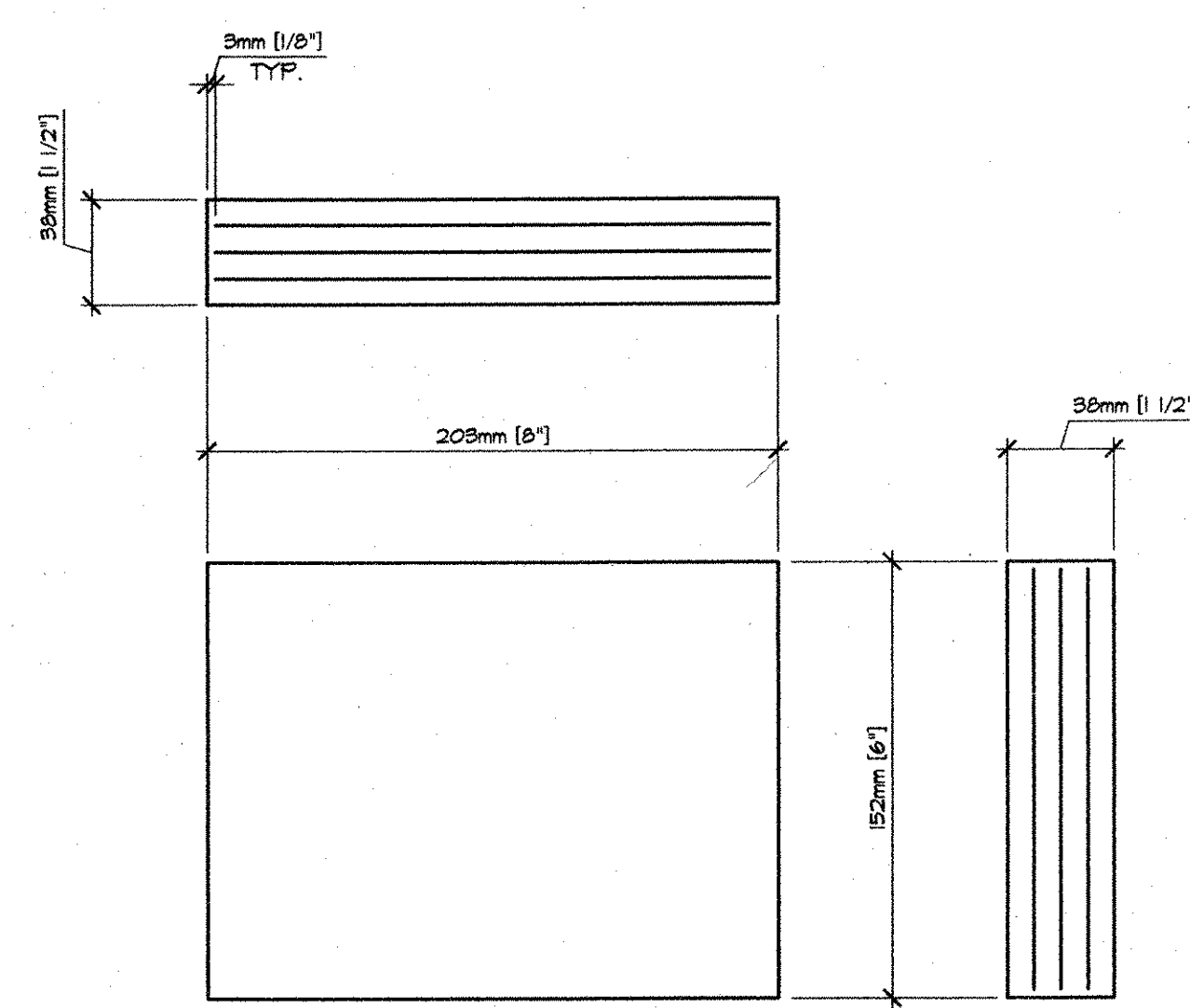
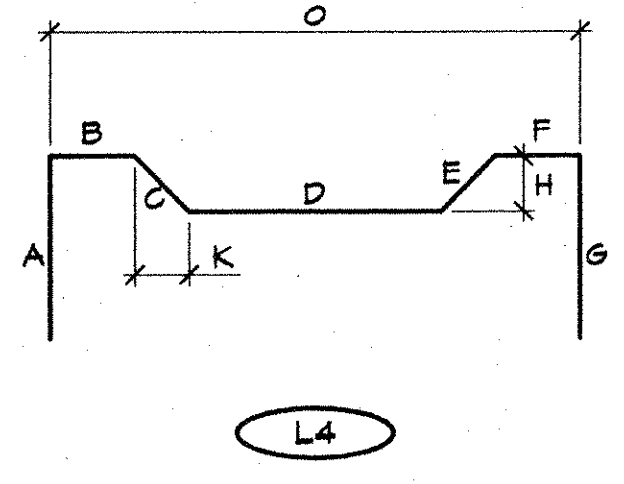
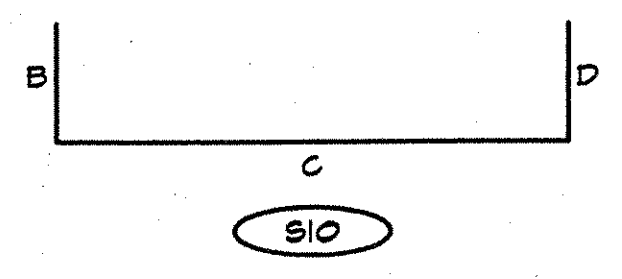
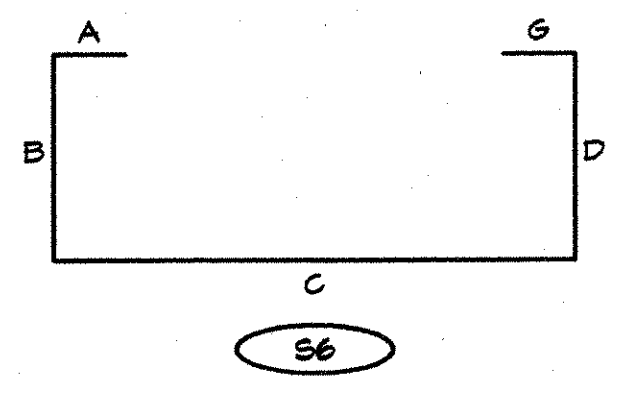
BENT BARS, TIES, & STIRRUPS

ITEM	MARK	QTY.	SIZE	LENGTH	TYPE	A	B	C	D	E	F/R	G	H	J	K	O	GRADE	REMARKS	
1	1B01E	222	#3 (#4)	210mm [7'-2 3/16"]	S6	152mm [6"]	440mm [1'-5 3/16"]	1105mm [3'-7 1/2"]	440mm [1'-5 3/16"]			152mm [6"]					420 [60]	EPOXY COATED	
2	1B02E	222	#3 (#4)	210mm [7'-2 3/16"]	S10		440mm [1'-5 3/16"]	1105mm [3'-7 1/2"]	440mm [1'-5 3/16"]								420 [60]	EPOXY COATED	
3	1B03E	222	#3 (#4)	210mm [7'-2 3/16"]	L4	180mm [7 1/16"]	180mm [7 1/16"]	180mm [7 1/16"]	180mm [7 1/16"]	180mm [7 1/16"]	180mm [7 1/16"]	180mm [7 1/16"]	180mm [7 1/16"]	180mm [7 1/16"]	180mm [7 1/16"]	180mm [7 1/16"]	1105mm [3'-7 1/2"]	420 [60]	EPOXY COATED
4	1B04E	148	#3 (#4)	180mm [6 3/8"]	S6	152mm [6"]	440mm [1'-5 3/16"]	800mm [2'-7 1/2"]	440mm [1'-5 3/16"]			152mm [6"]					420 [60]	EPOXY COATED	
5	1B05E	148	#3 (#4)	180mm [6 3/8"]	S10		440mm [1'-5 3/16"]	800mm [2'-7 1/2"]	440mm [1'-5 3/16"]								420 [60]	EPOXY COATED	
6	1B06E	14	#3 (#4)	180mm [6 3/8"]	L4	180mm [7 1/16"]	180mm [7 1/16"]	180mm [6 3/8"]	180mm [6 3/8"]	180mm [7 1/16"]	180mm [7 1/16"]	180mm [7 1/16"]	180mm [7 1/16"]	180mm [7 1/16"]	180mm [7 1/16"]	180mm [7 1/16"]	800mm [2'-7 1/2"]	420 [60]	EPOXY COATED
7	1B07E	14	#3 (#4)	180mm [6 3/8"]	L4	180mm [7 1/16"]	180mm [7 1/16"]	180mm [6 3/8"]	180mm [6 3/8"]	180mm [7 1/16"]	180mm [7 1/16"]	180mm [7 1/16"]	180mm [7 1/16"]	180mm [7 1/16"]	180mm [7 1/16"]	180mm [7 1/16"]	800mm [2'-7 1/2"]	420 [60]	EPOXY COATED
8																			
9																			
10																			
11																			
12																			
13																			
14																			
15																			

Verify lengths according to revised clearances

MISCELLANEOUS MATERIALS

ITEM	MARK	QTY.	DESCRIPTION	REMARKS
1	MKFB	32	DAYTON C24 TYPE 4 - APR PRECAST HALF HANGER (GALV)	FOR ERECTION
2		20	305mm [12"] x 615mm [20'-2 3/8"] LONG VOID	
3		20	305mm [12"] x 2010mm [6'-7 1/8"] LONG VOID	
4		6	254mm [10"] x 615mm [20'-2 3/8"] LONG VOID	
5		6	254mm [10"] x 2010mm [6'-7 1/8"] LONG VOID	
6		80	19mm [3/4"] x 114mm [4 1/2"] NON-FERROUS VOID DRAINS	
7		24	19mm [3/4"] x 140mm [5 1/2"] NON-FERROUS VOID DRAINS	
8		20	DOUBLE 13mm [1/2"] STRAND LIFTING LOOPS	
9	EM-1	6	19mm [3/4"] x 127mm [5"] x 127mm [5"] (1) 51mm [2"] HOLE (GALV)	FOR ERECTION (SEE DETAIL THIS SHEET)
10		3	13mm [1/2"] x 6325mm [20'-4"] POLYSTRAND	
11		6	SINGLE USE STRESSING CHUCK & GREASE CAPS	
12	EM-3	10	19mm [3/4"] x 127mm [5"] x 127mm [5"] (1) 38mm [1 1/2"] HOLE (GALV)	FOR ERECTION (SEE DETAIL THIS SHEET)
13		10	38mm [1 1/2"] x 1200mm [48"] ANCHOR BOLT W/ 16mm [5/8"] THREADED ON END (GALV)	FOR ERECTION (SEE DETAIL THIS SHEET)
14		10	38mm [1 1/2"] HEAVY HEX NUT (GALV)	FOR ERECTION (SEE DETAIL THIS SHEET)
15		10	38mm [1 1/2"] STANDARD WASHER (GALV)	FOR ERECTION (SEE DETAIL THIS SHEET)
16		20	152mm [6"] x 203mm [8"] x 38mm [1 1/2"] ELASTOMERIC BEARING PADS	(SEE DETAIL THIS SHEET)
17		10	102x102xMM26xMM26 [W/F 4x4-M4xM4] 445mm x 1105mm [1'-5 1/2" x 3'-7 1/2"]	
18		8	102x102xMM26xMM26 [W/F 4x4-M4xM4] 445mm x 808mm [1'-5 1/2" x 2'-7 1/2"]	
19				
20				
21				
22				



APPROVAL STAMP:

RECEIVED
CHKD BY: JWP, OKD BY: CWC
MAR 3 1 2006
RESUBMIT APPROVED: As noted
BY: CWC DATE: 4/6/06

J.P. CARRARA & SONS INC.
Precast & Prestress Manufacturer
2464 CASE STR., MIDDLEBURY, VERMONT 05753 Phone: (802)388-6361 Fax: (802)388-9010

STATE OF VERMONT A.O.T.
COUNTY OF RUTLAND

TOWN OF CLARENDON - BRIDGE #24
TH 16 OVER CLARENDON RIVER

MATERIALS LIST

BELDEN COMPANY, INC.
CONTRACTOR
RUTLAND, VERMONT

DATE: MARCH 29, 2006
SCALE: NOTED
CHKD: - DFTM: D.S.S.
JOB NO: 23236-06
DWG. NO: M1
057 PCL