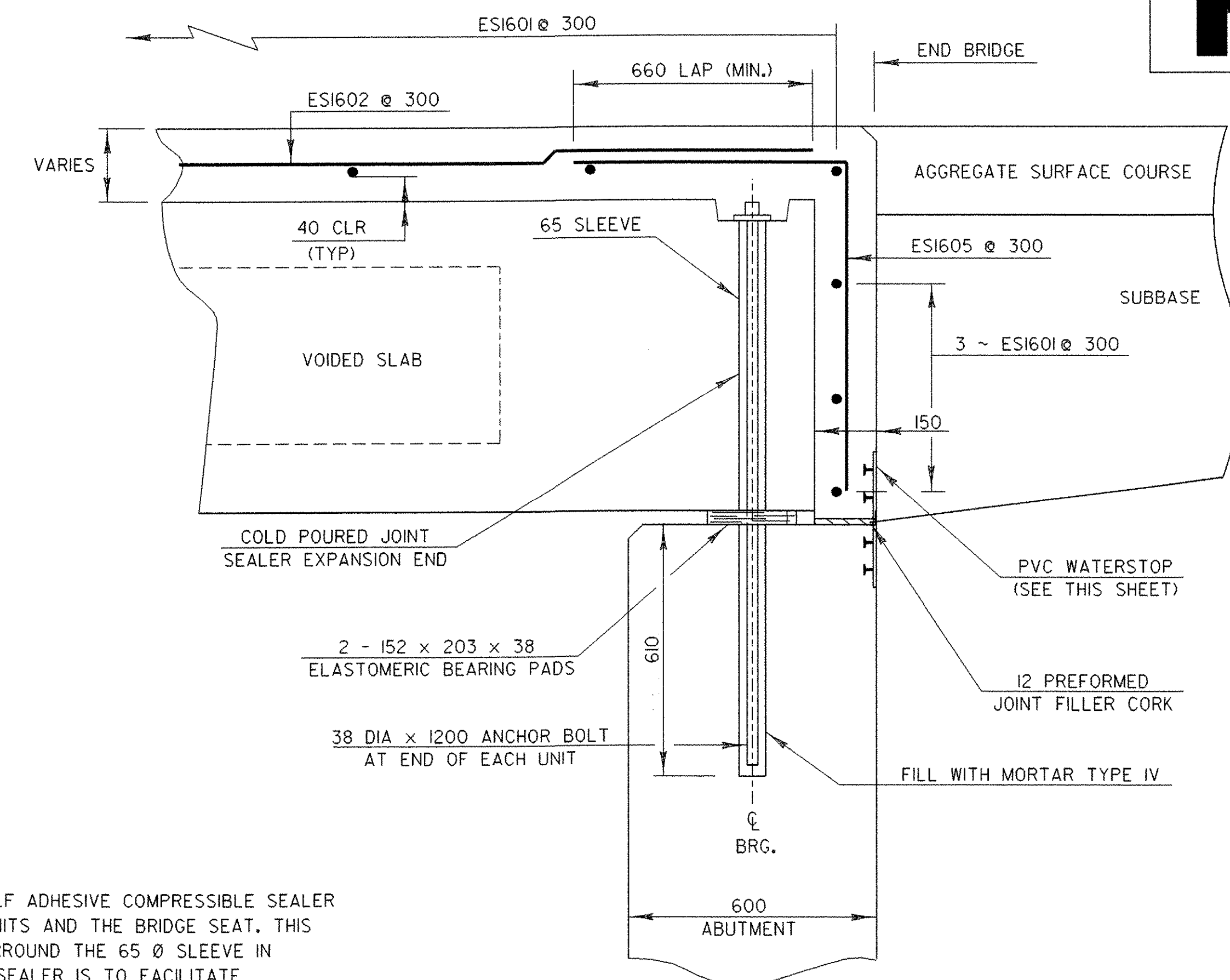


**BRIDGE END DETAIL AT ABUTMENT #1 (FIXED)**

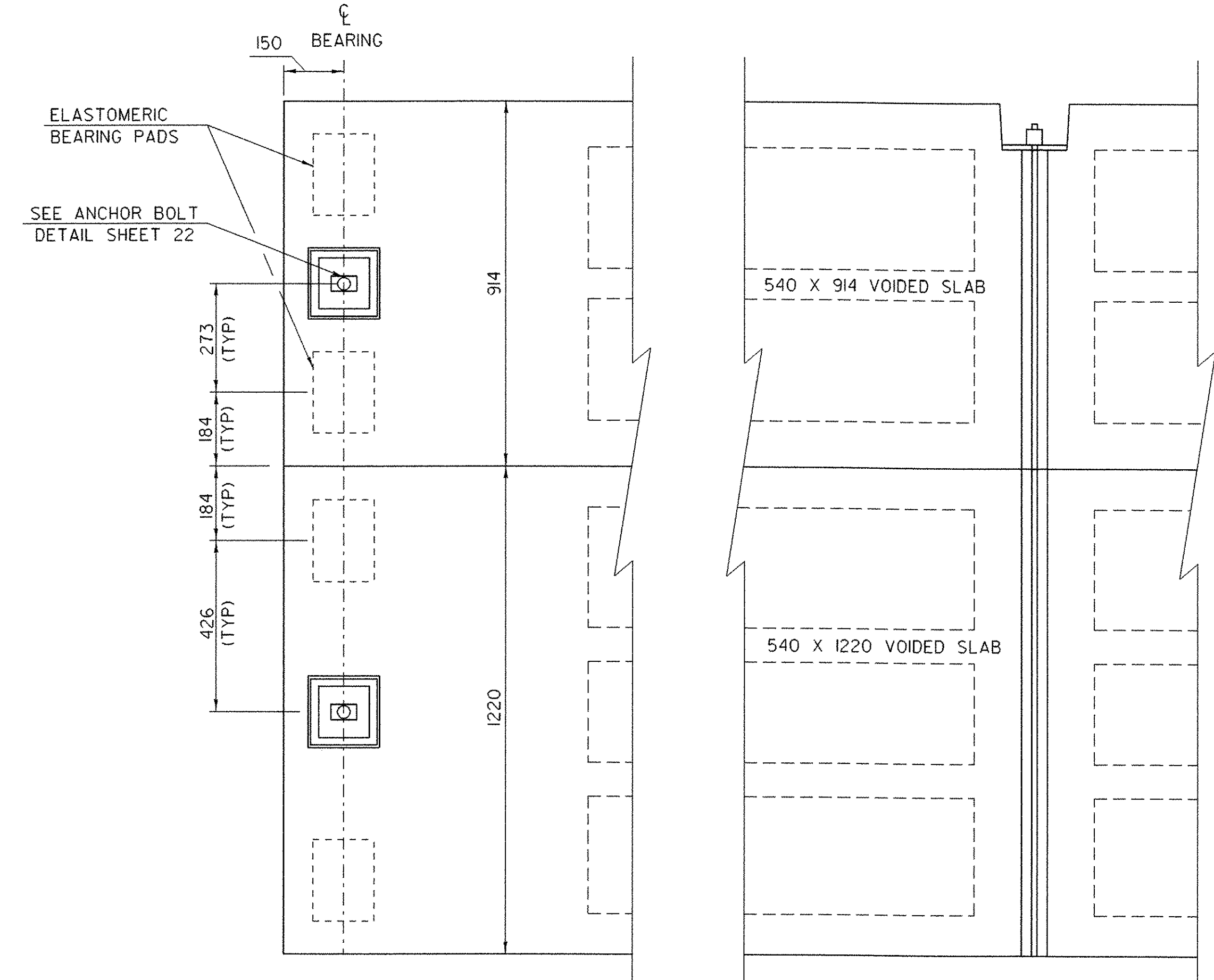
SCALE = 1:10



**BRIDGE END DETAIL AT ABUTMENT #2 (EXP)**

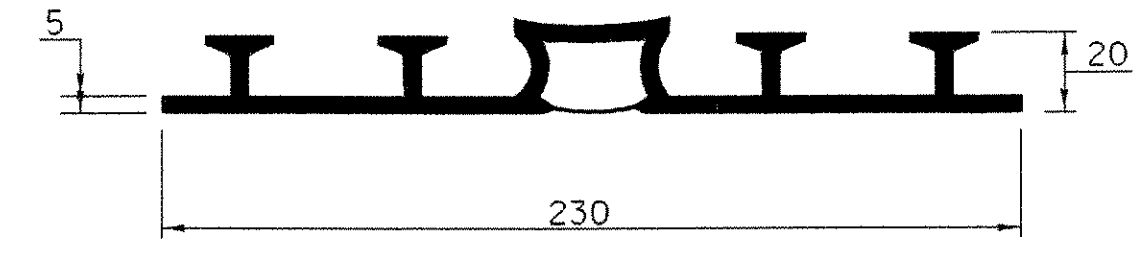
SCALE = 1:10

NOTE: FABRICATOR SHALL SUPPLY A SELF ADHESIVE COMPRESSIBLE SEALER BETWEEN THE BOTTOM OF THE UNITS AND THE BRIDGE SEAT. THIS COMPRESSIBLE SEALER SHALL SURROUND THE 65 Ø SLEEVE IN THE UNIT. THE PURPOSE OF THE SEALER IS TO FACILITATE PLACEMENT OF THE 'MORTAR OR JOINT SEALER' AROUND THE ANCHOR BOLTS.



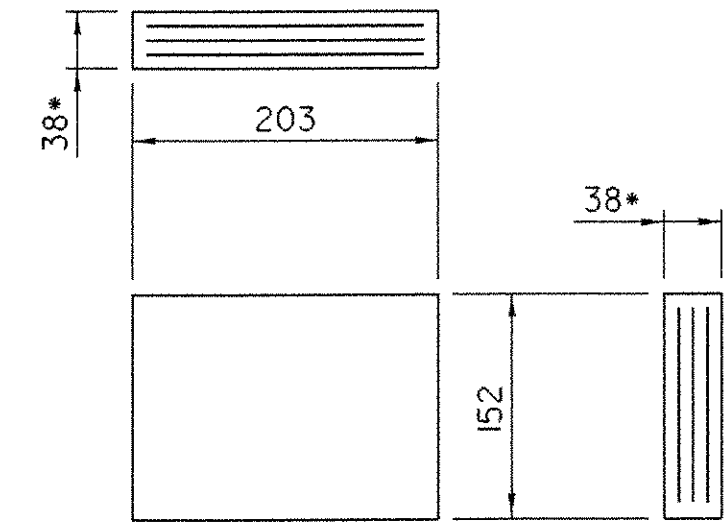
**BEARING PAD PLACEMENT DETAIL (TYPICAL EACH END)**

SCALE = 1:10



**PVC WATERSTOP FOR EXPANSION JOINTS**

THE COSTS FOR PVC WATERSTOP SHALL BE INCLUDED IN THE UNIT PRICE BID FOR CONCRETE. OTHER CONFIGURATIONS MAY BE USED BASED UPON PRIOR APPROVAL OF THE STRUCTURES ENGINEER.



**ELASTOMERIC BEARING DETAIL**

4 - 8mm LAYERS OF ELASTOMERIC ALTERNATING WITH 3 - 14 GAGE STEEL REINFORCING PLATES

**NOTES**

- ALTERNATE CONFIGURATIONS FOR ELASTOMERIC BEARINGS MAY BE SUBMITTED FOR APPROVAL. ANY ALTERNATE BEARING SUBMITTED SHALL BE DESIGNED AND CERTIFIED TO MEET THE LOADS AND CRITERIA SHOWN ON THIS SHEET AND MAINTAIN THE ANCHORAGE SYSTEM SHOWN. THE BEARINGS SHALL BE DESIGNED ACCORDING TO AASHTO "STANDARD SPECIFICATIONS FOR HIGHWAY BRIDGES" 2002 EDITION AND ITS LATEST REVISIONS.
- THE BEARING SHAPE FACTOR SHALL BE BETWEEN 5.0 AND 12.0.
- ALL REINFORCEMENT BETWEEN LAYERS OF ELASTOMERIC SHALL BE STEEL GRADE 250. NO FABRIC REINFORCEMENT WILL BE PERMITTED.
- ELASTOMERIC BEARINGS REINFORCED WITH STEEL SHALL HAVE A 3mm EDGE SEAL OF ELASTOMERIC INTEGRAL WITH THE BEARING OVER ALL PLATES.
- ALL MATERIALS AND FABRICATION SHALL BE PER AASHTO DIVISION II SECTION 18.2 AND AASHTO MATERIAL SPECIFICATION M251.
- DESIGN CRITERIA:
  - A. TEMPERATURE RANGE: 27C
  - B. 60 DUROMETER ELASTOMERIC
  - C. MAXIMUM BEARING STRESS: 7 MPa
  - D. DESIGN ROTATION: 0.015 RAD
  - E. REACTION/BEAM:
    - RDL: 140 KN
    - RLL: 146 KN

**NOTES**

- NF = NEAR FACE
- FF = FAR FACE
- EF = EACH FACE
- ▲ = CUT TO FIT IN FIELD
- 80 CLEAR UNLESS OTHERWISE SPECIFIED ON THE PLANS

SHEET NAME: <b>BRIDGE END AND BEARING DETAILS</b>		
PROJECT NAME: <b>CLARENDON</b>	HIGHWAY NO.: <b>TH 16</b>	
PROJECT NUMBER: <b>BRO 1443(34)</b>	BRIDGE NO.: <b>24</b>	
	OVER: <b>CLARENDON RIVER</b>	
FILE NAME: /PW/95j286/sj286sup.dgn	PLOT DATE: <b>01-DEC-2005</b>	
PROJECT MANAGER: <b>R. WHITCOMB</b>	DRAWN BY: <b>J. GILMORE</b>	
DESIGNED BY: <b>C. CARLSON</b>	IPARM NAME: <b>sj286bed.j</b>	
BRIDGE SHEET NUMBER:	SHEET <b>28</b> OF <b>43</b>	