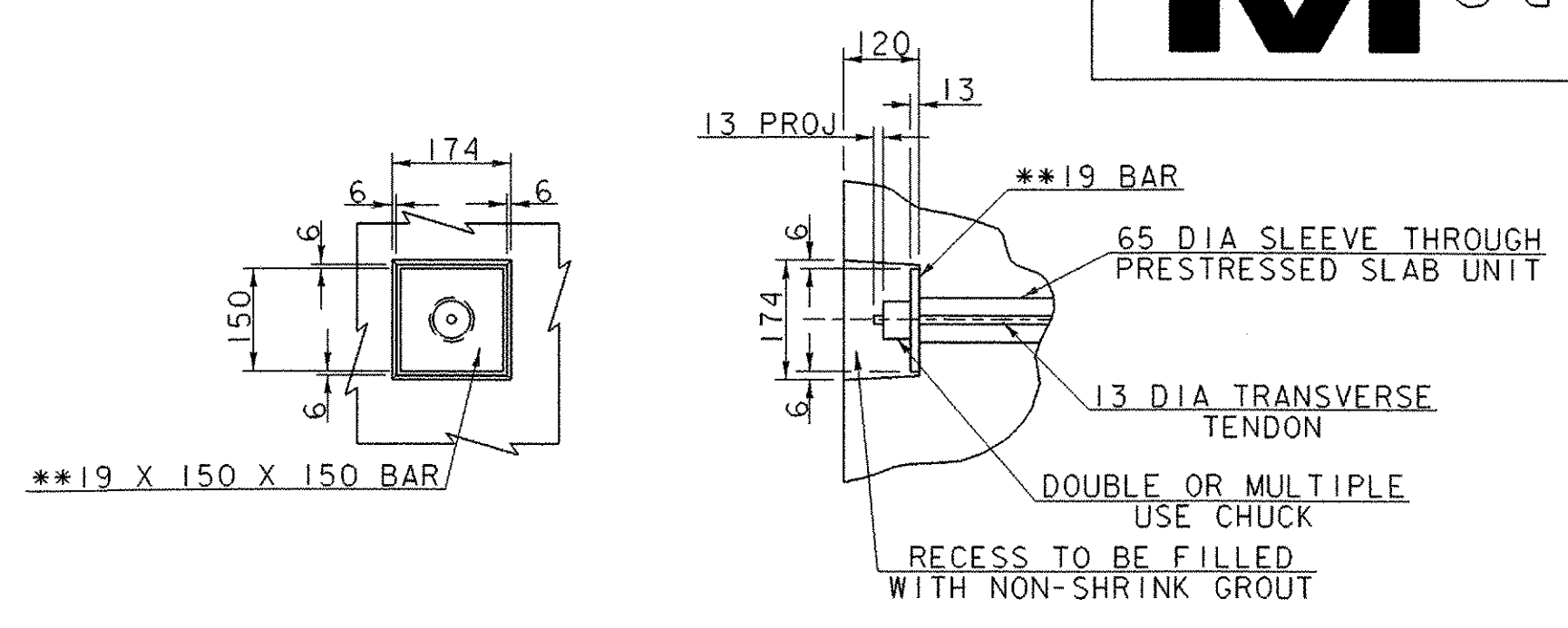
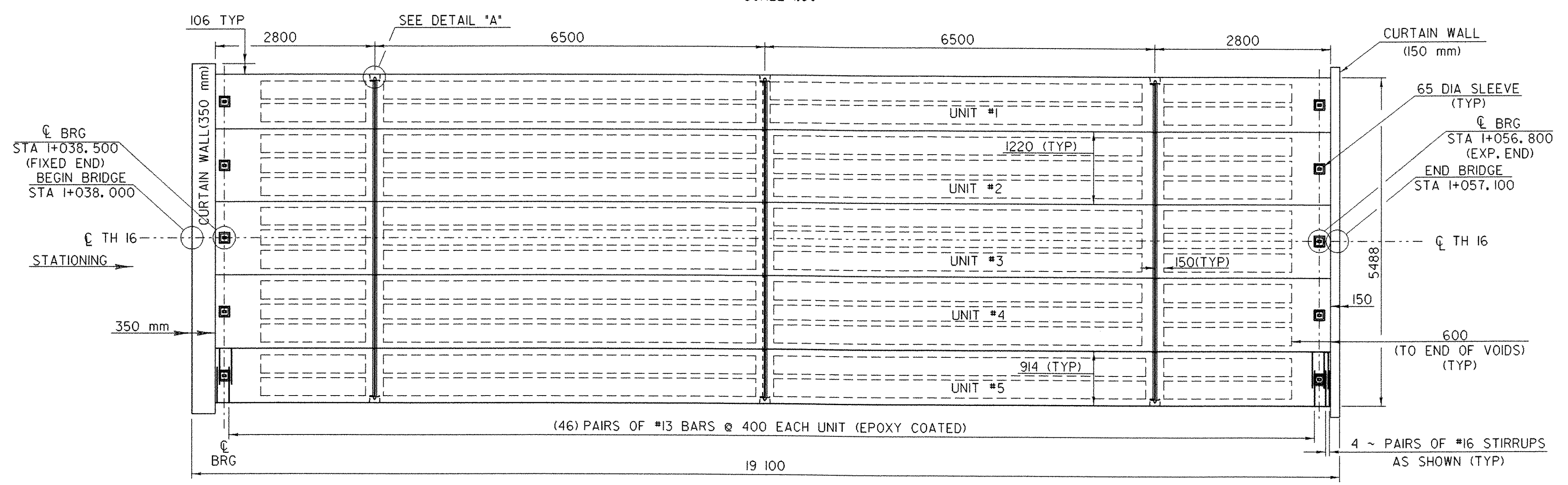


**DECK REINFORCING**  
SCALE 1:50

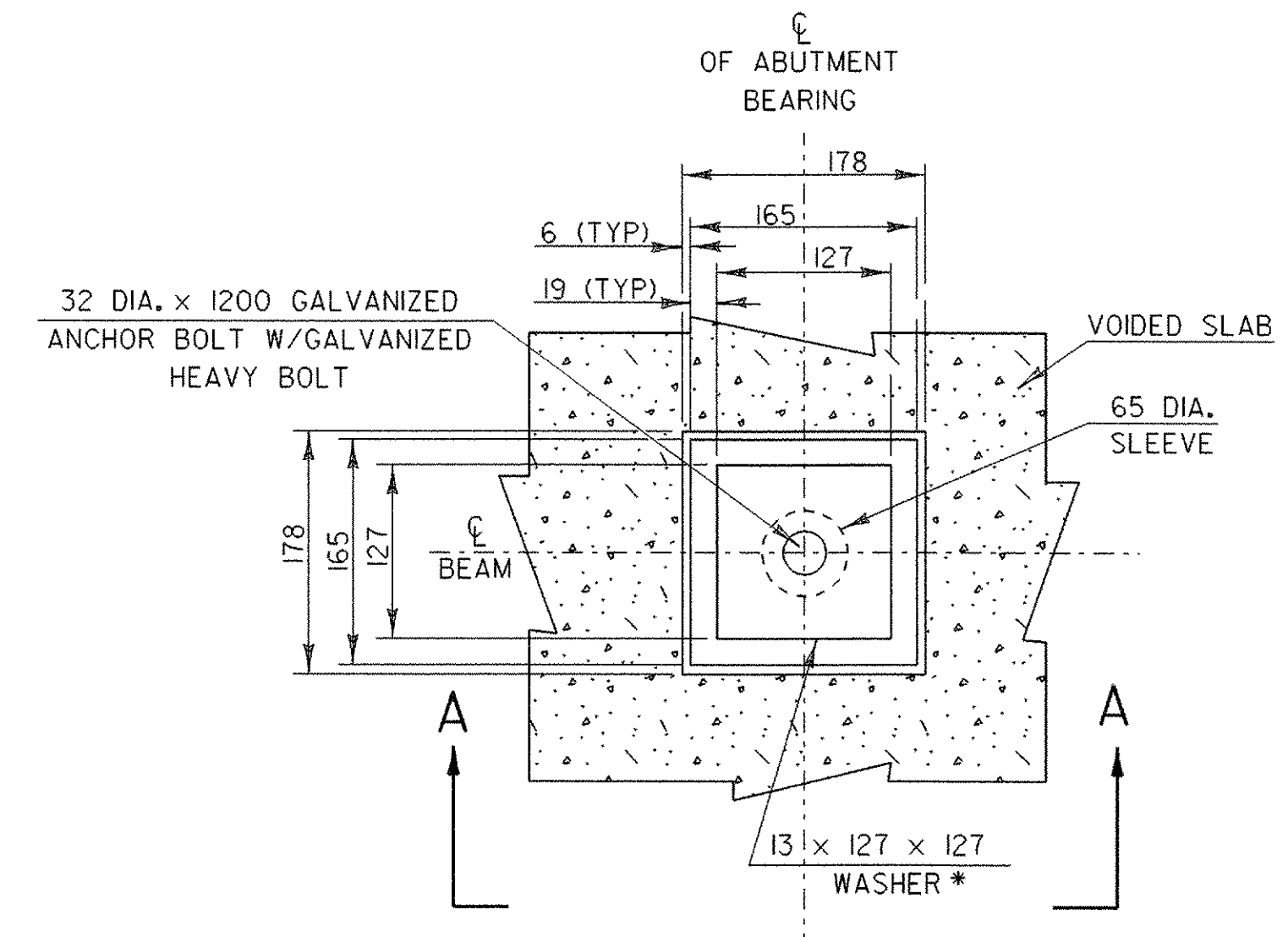


**DETAIL "A"**  
NTS

\* TRANSVERSE TIES SHALL BE COVERED BY SEAMLESS POLYPROPYLENE SHEATH (WITH CORROSION INHIBITOR GREASE BETWEEN SHEATH AND STRAND) FOR THE LENGTH OF STRAND, EXCEPT AT ANCHORAGE LOCATIONS, TIES SHALL BE TENSIONED TO 133.5 KN  
\*\* AASHTO M270/M270M GRADE 345 STEEL

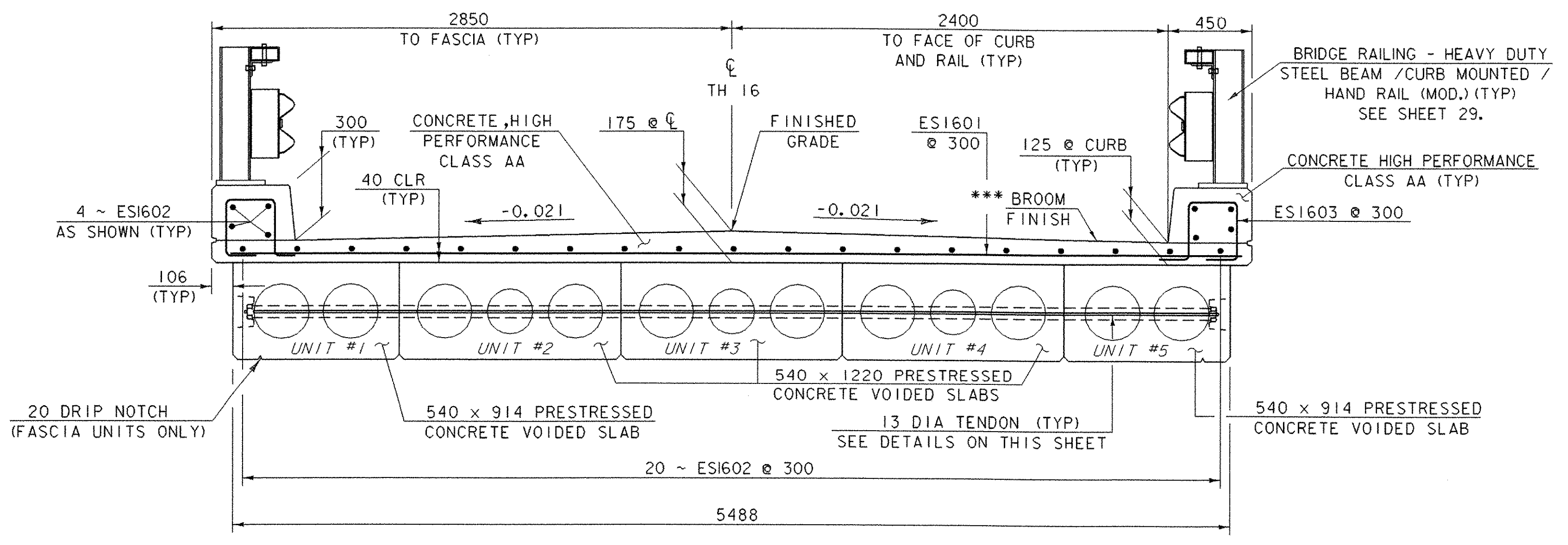


**PLAN PRESTRESSED VOIDED SLAB UNITS**  
SCALE 1:50



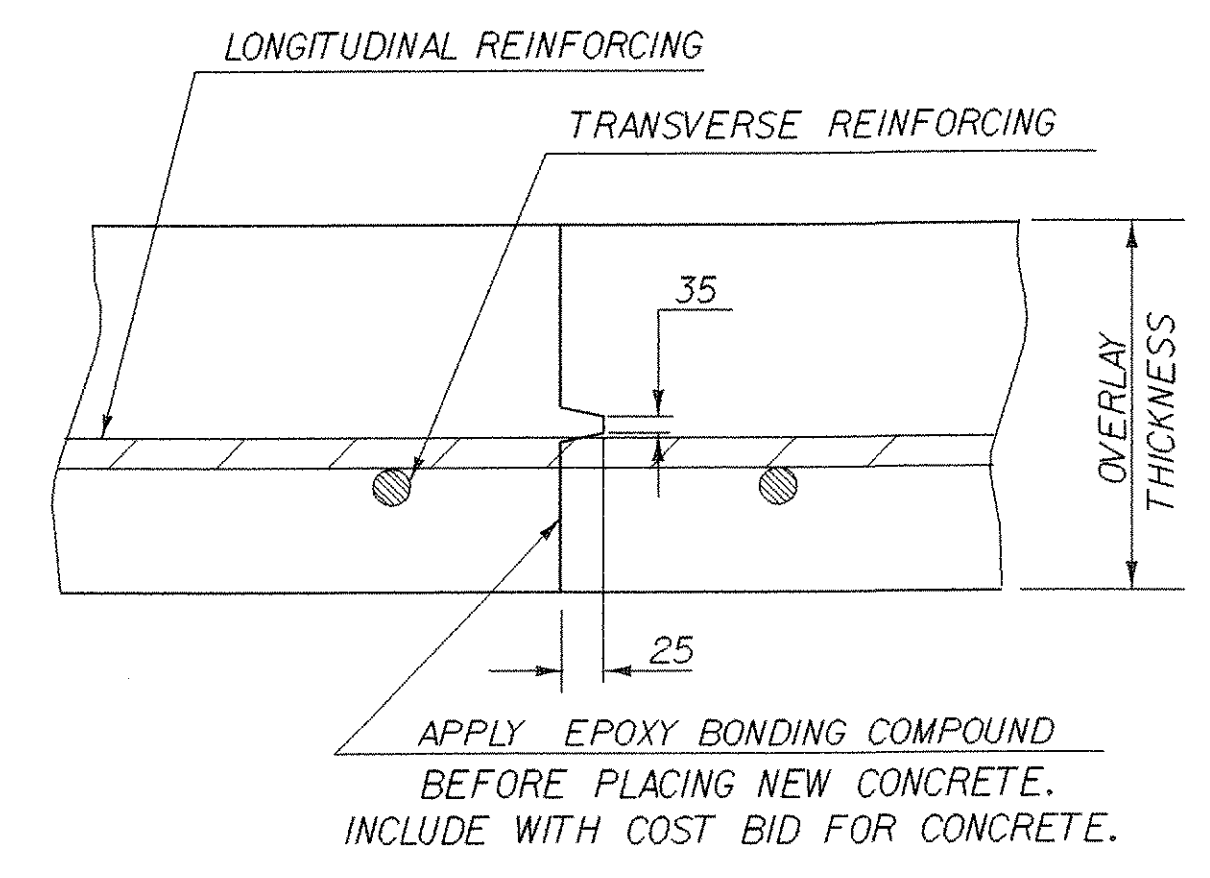
**END BRIDGE ANCHOR BOLT DETAIL**

NOTE: FOR SPECIFICATION FOR ANCHOR BOLTS & NUTS SEE VAOT SPECIFICATION 714.08  
\* EM-3 (13 x 127 x 127) WASHER WITH 38 DIA. HOLE (GALVANIZED)

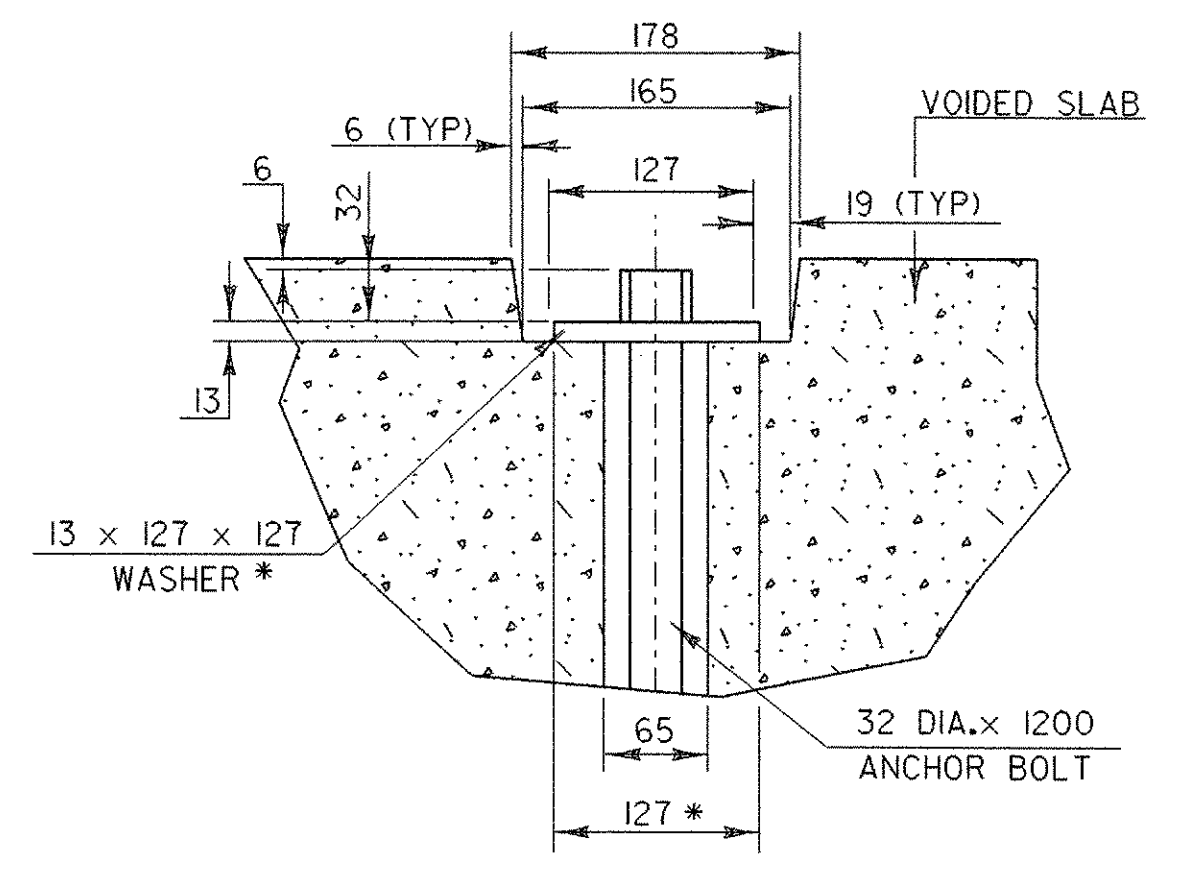


**TYPICAL SECTION AT MIDSPAN**  
SCALE = 1:20

\*\*\* THE CONCRETE DECK WILL BE BROOM FINISHED NORMAL TO CENTERLINE.



**TRANSVERSE BRIDGE SLAB CONSTRUCTION JOINT DETAILS**



**SECTION A-A**

<b>SHEET NAME: DECK DETAILS</b>		
PROJECT NAME: CLARENDON	HIGHWAY NO.: TH 16	
PROJECT NUMBER: BRO 1443(34)	BRIDGE NO.: 24	
	OVER: CLARENDON RIVER	
FILE NAME: /PW/95j286/sj286sup.dgn	PLOT DATE: 01-DEC-2005	
PROJECT MANAGER: R. WHITCOMB	DRAWN BY: J. GILMORE	
DESIGNED BY: C. CARLSON	IPARM NAME: sj286dck.1	
BRIDGE SHEET NUMBER:	SHEET 25 OF 43	