

GPS CONTROL POINTS

HVCTRL # 1
 Standard Disk Stamped
 25-2 Temp
 NORTH = 127415.261
 EAST = 465368.172
 ELEV. =

From the junction of route 7 and route 4 east in Rutland, go east on route 4 for 3.4 miles to its intersection with Park Lane on the left and the mark on the left in the northwest quadrant of the intersection. The mark is a 1m (3ft) rebar, with a drill hole, driven into the ground
 12.7 m (41.7ft) south of a gate post (old tel pole)
 10.6m (34.8ft) northeast of the end of a metal guardrail on park lane
 10.1m (33.1ft) east of a fence corner and conc highway bound
 1.4m (4.6ft) west of the west edge of route 4

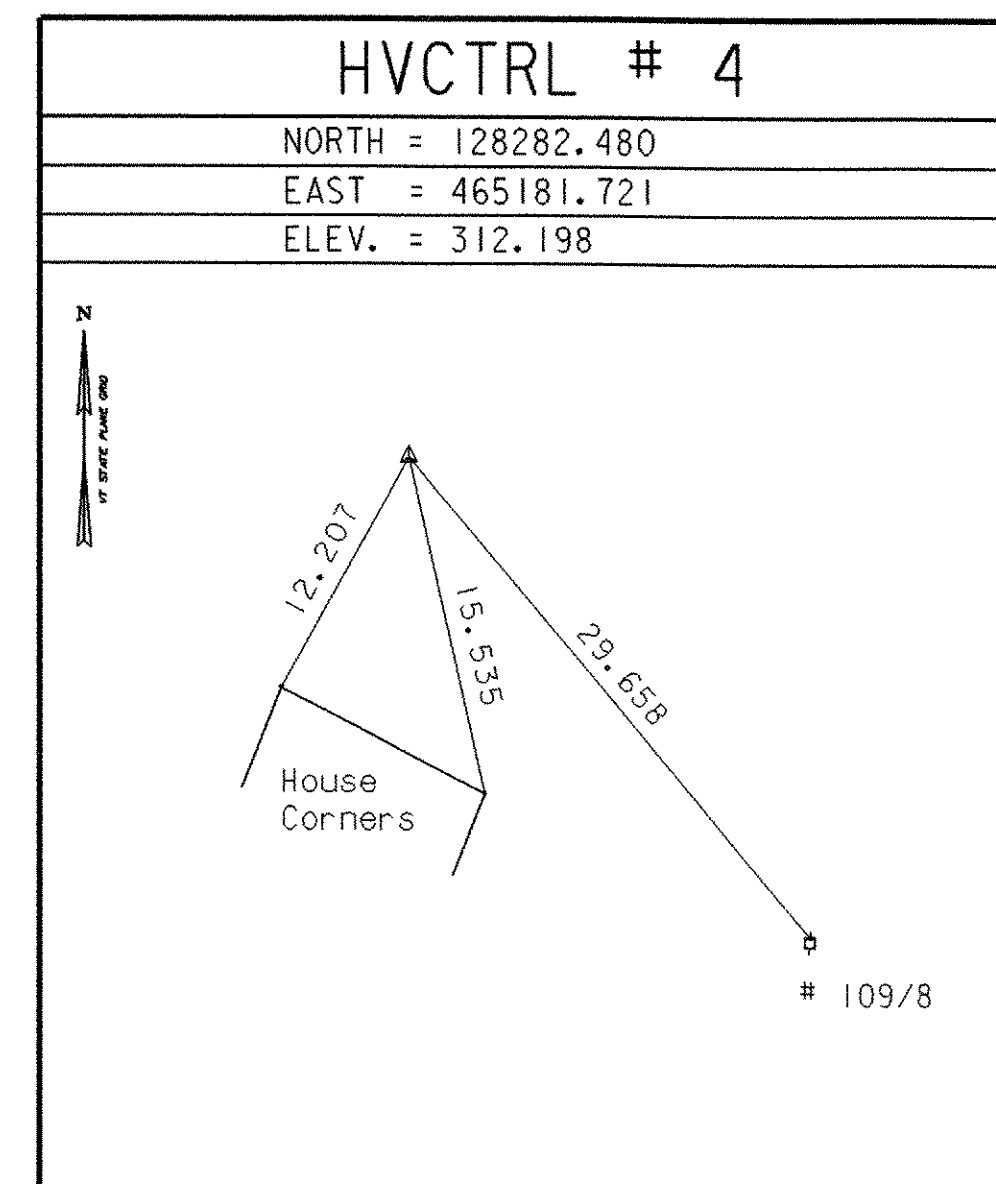
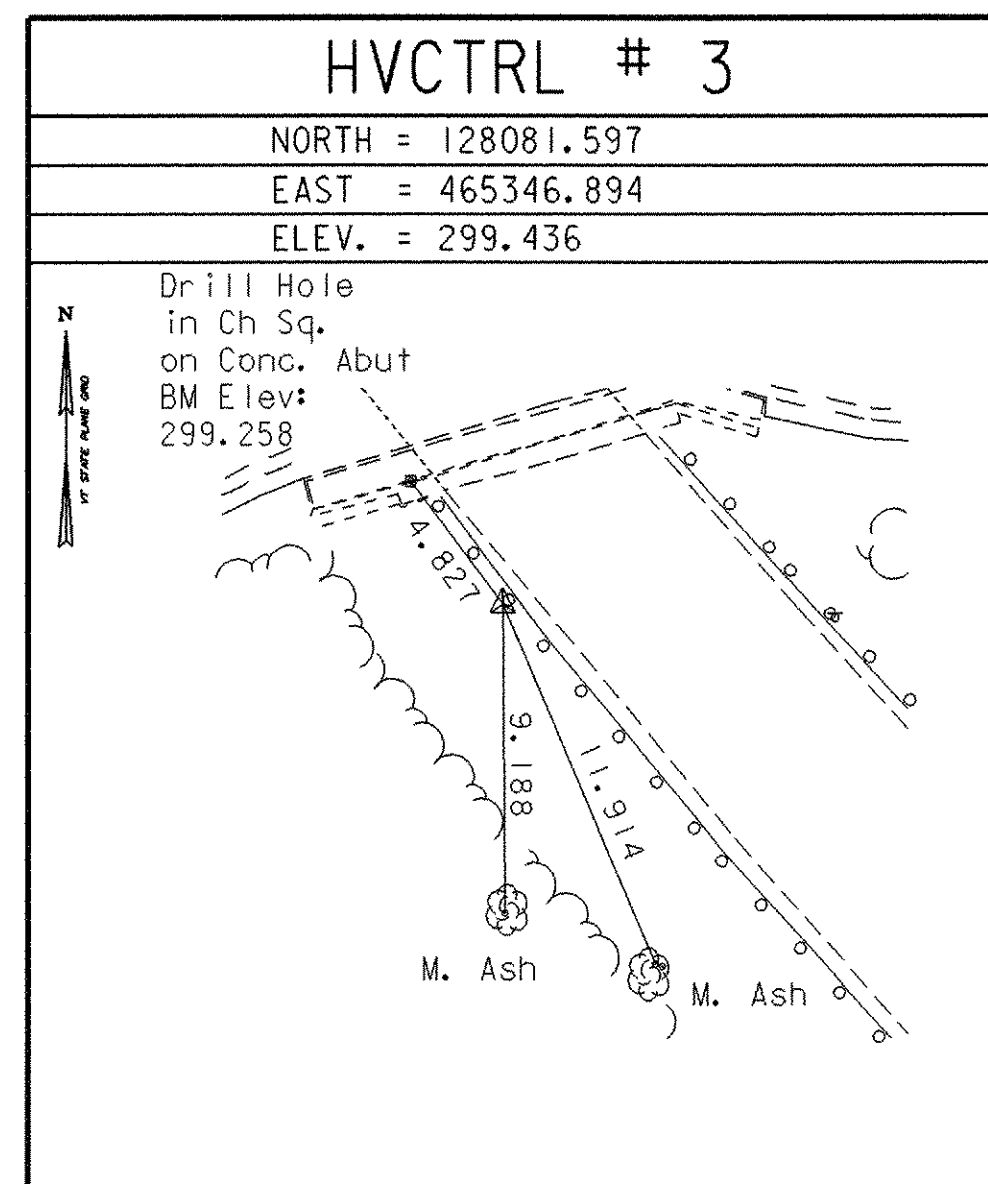
HVCTRL # 2
 Standard Disk Stamped
 Mendon
 NORTH = 127997.517
 EAST = 465501.393
 ELEV. = 317.408



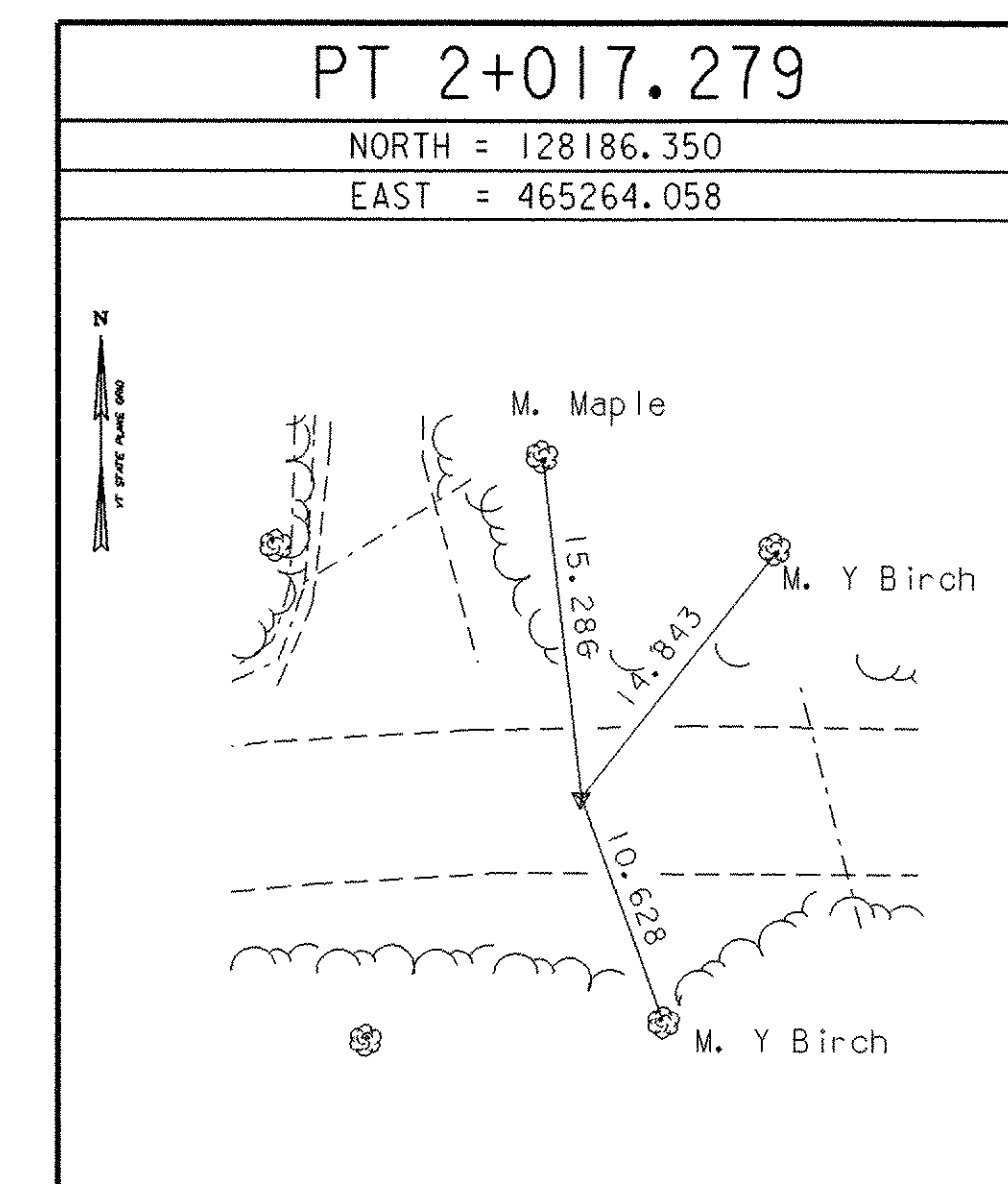
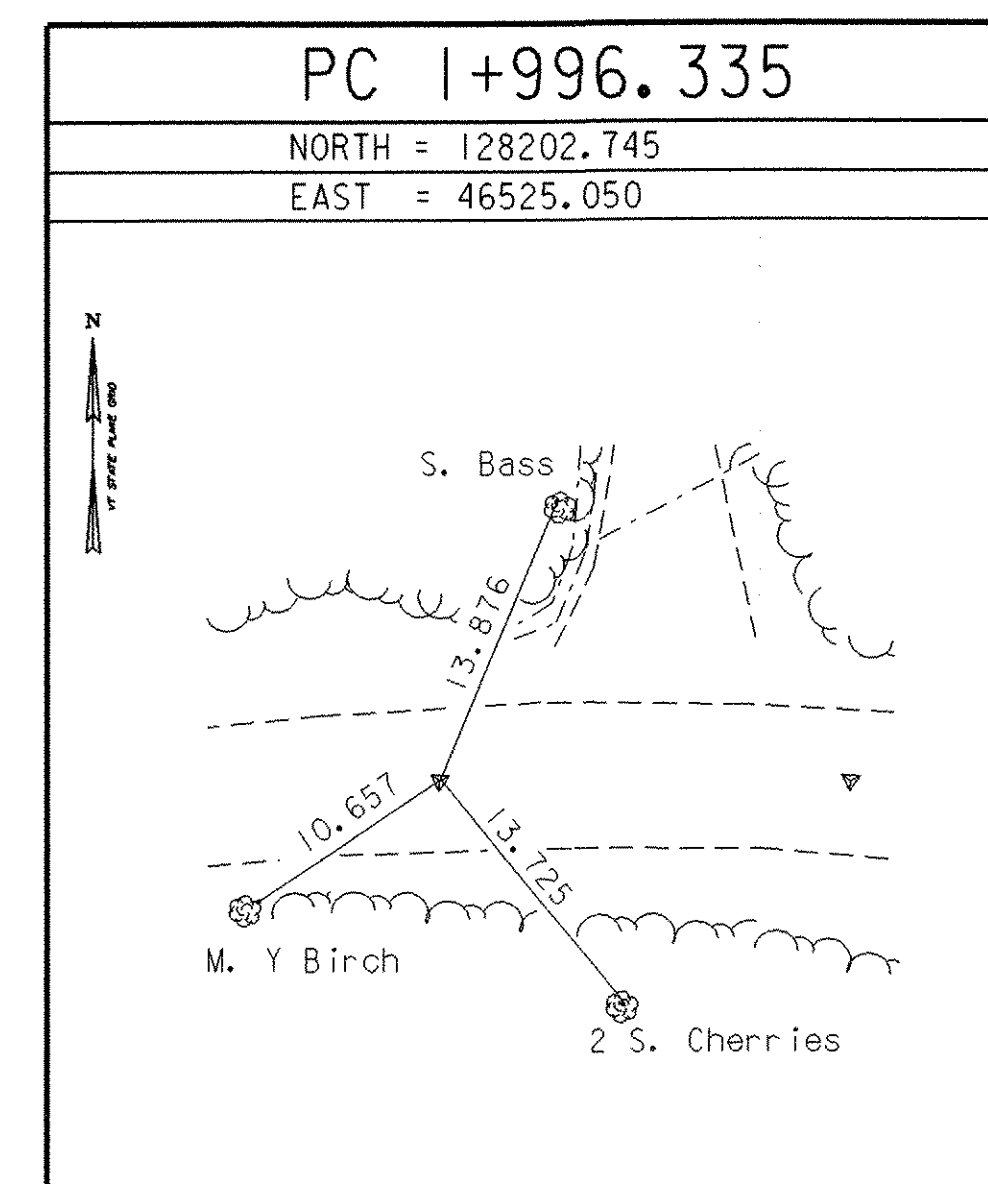
Station Mendon was reported destroyed

* Description provided by Vermont Agency of Transportation Geodetic Survey Unit

TRAVERSE TIES

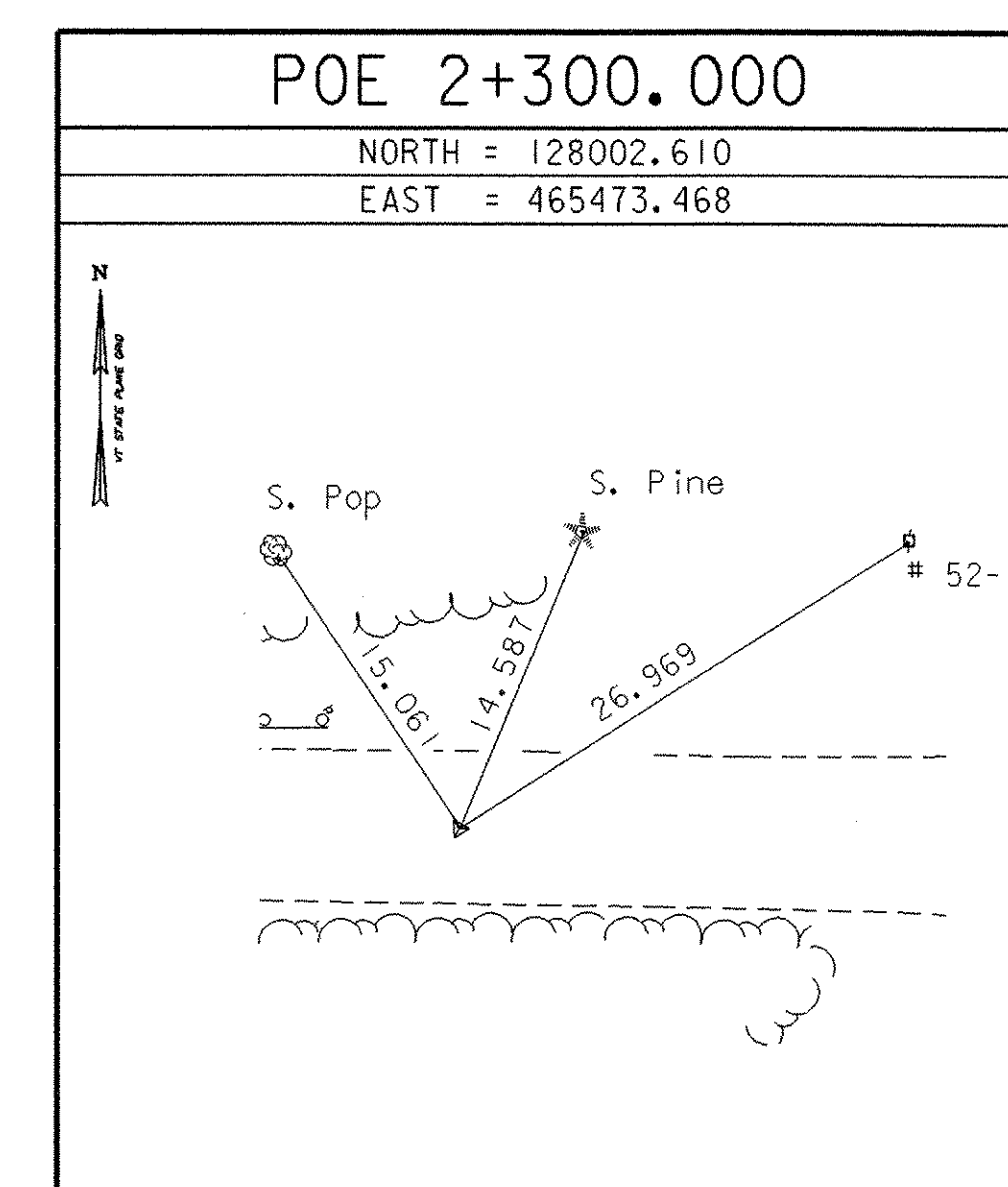
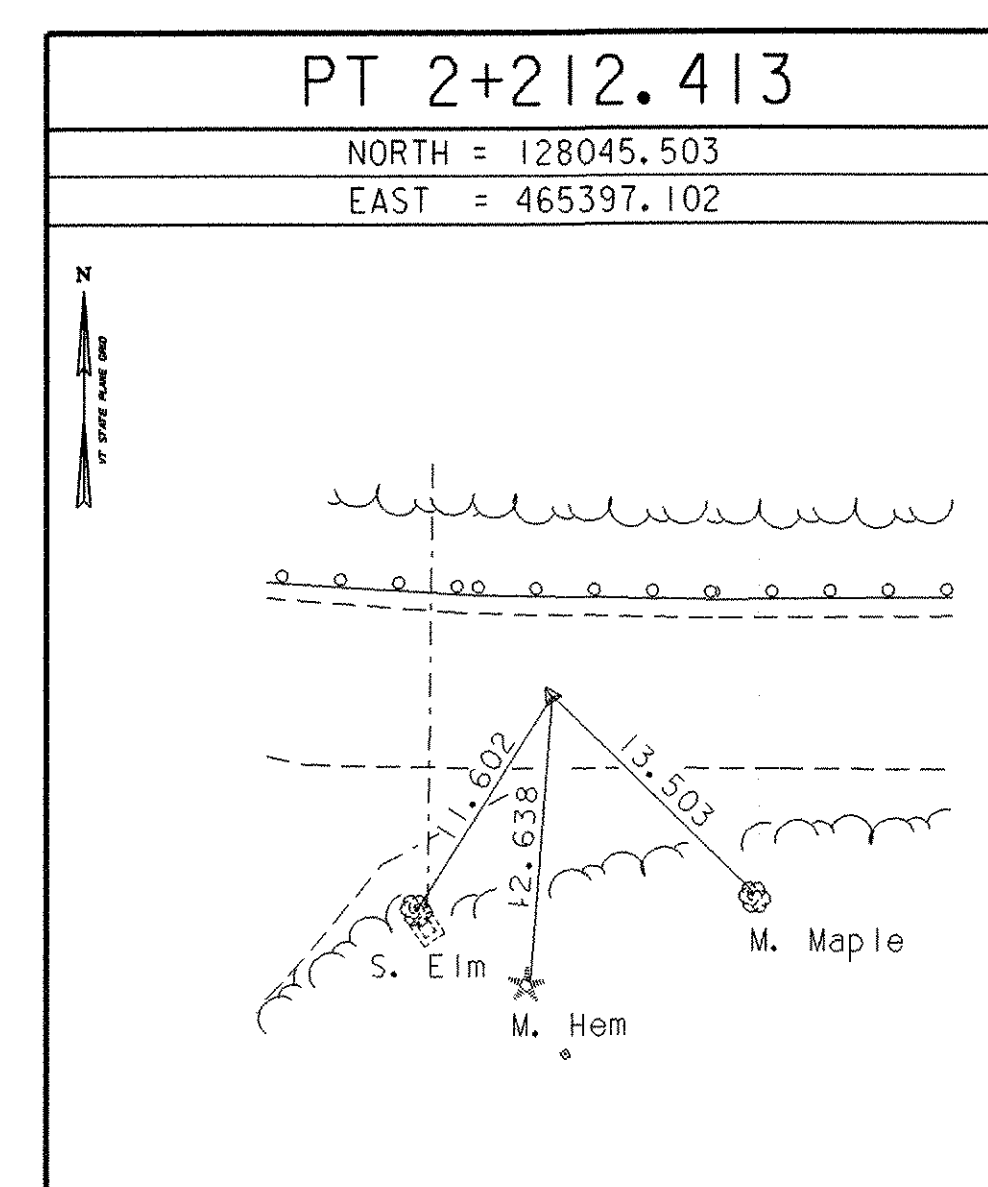
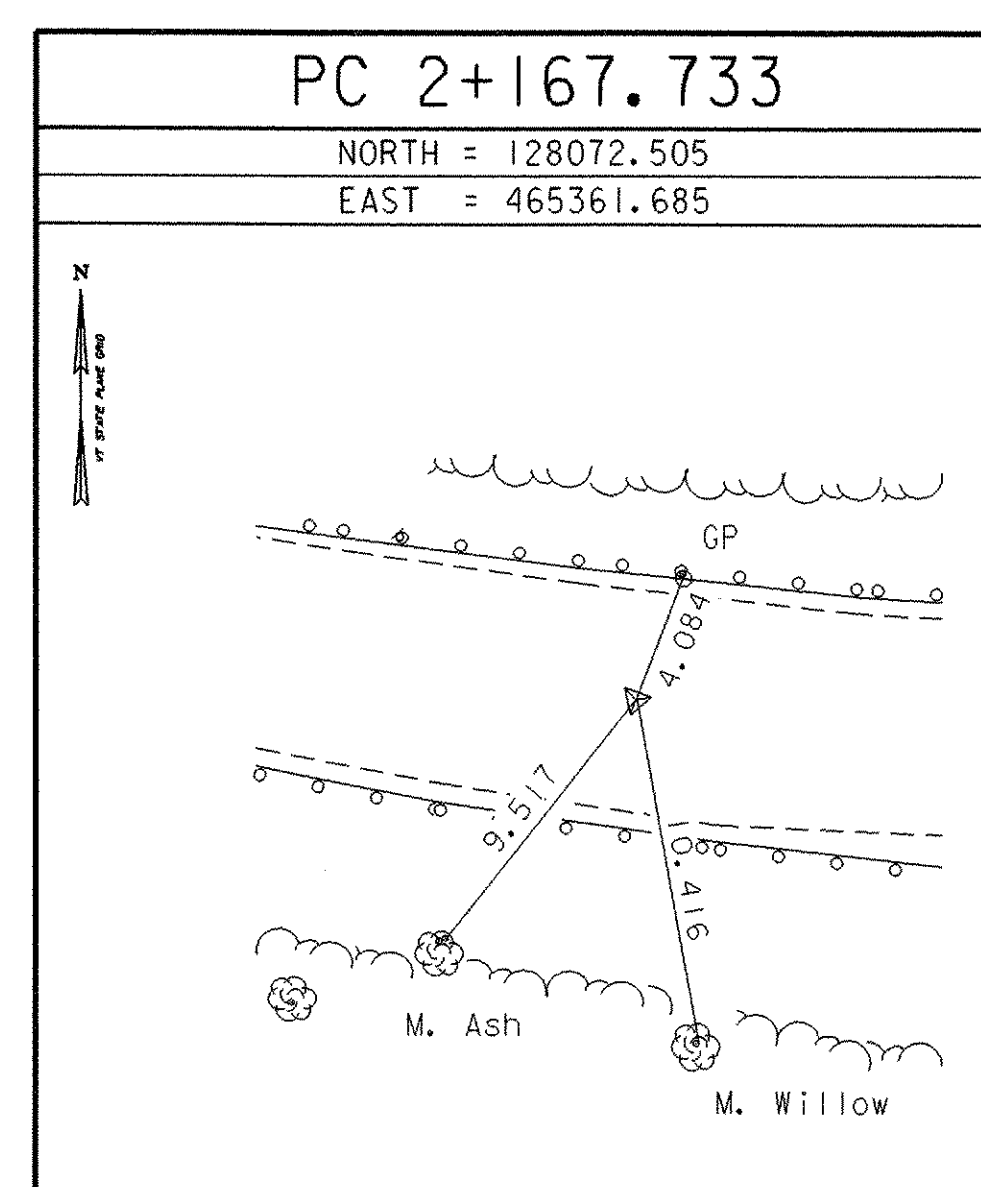
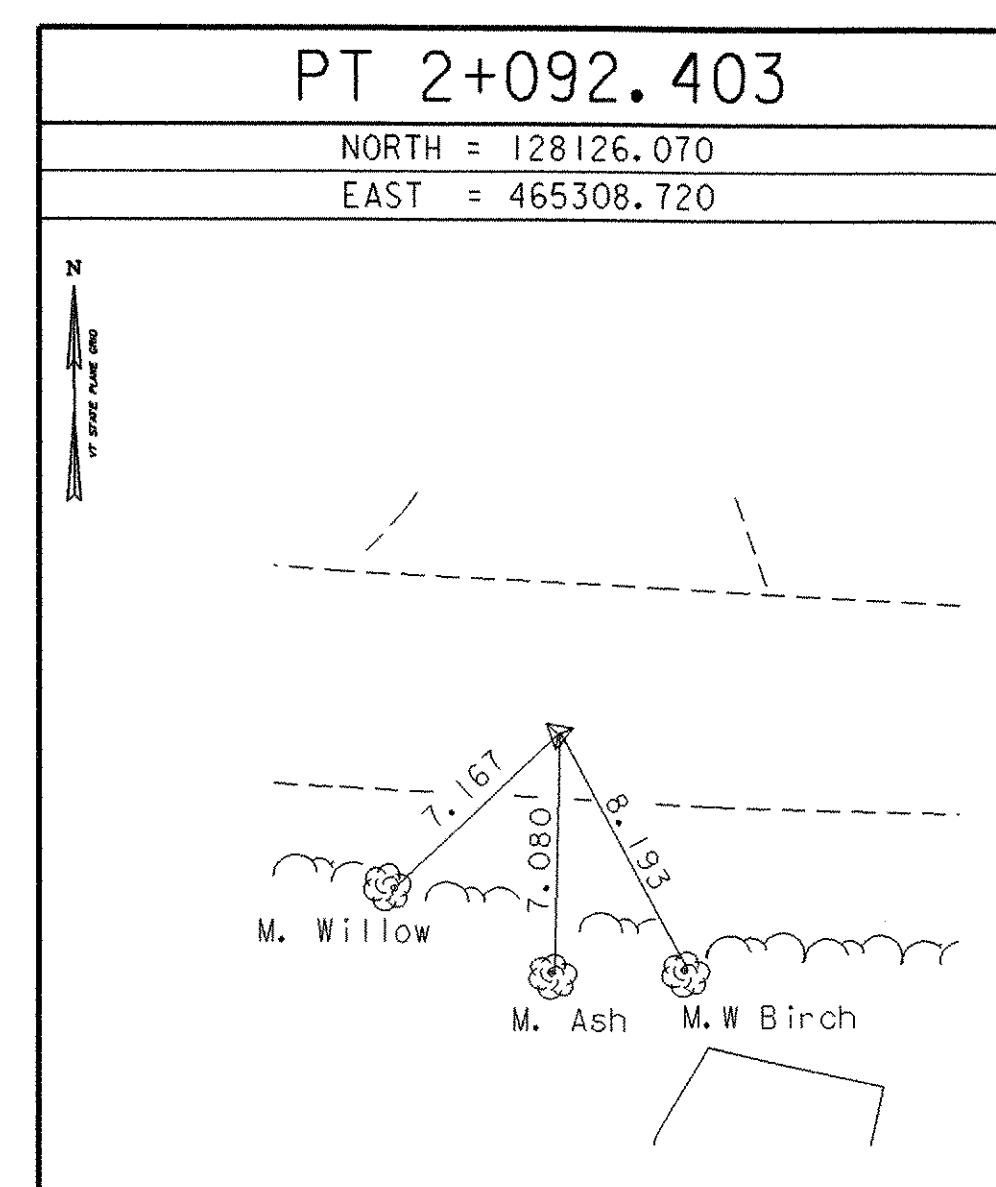
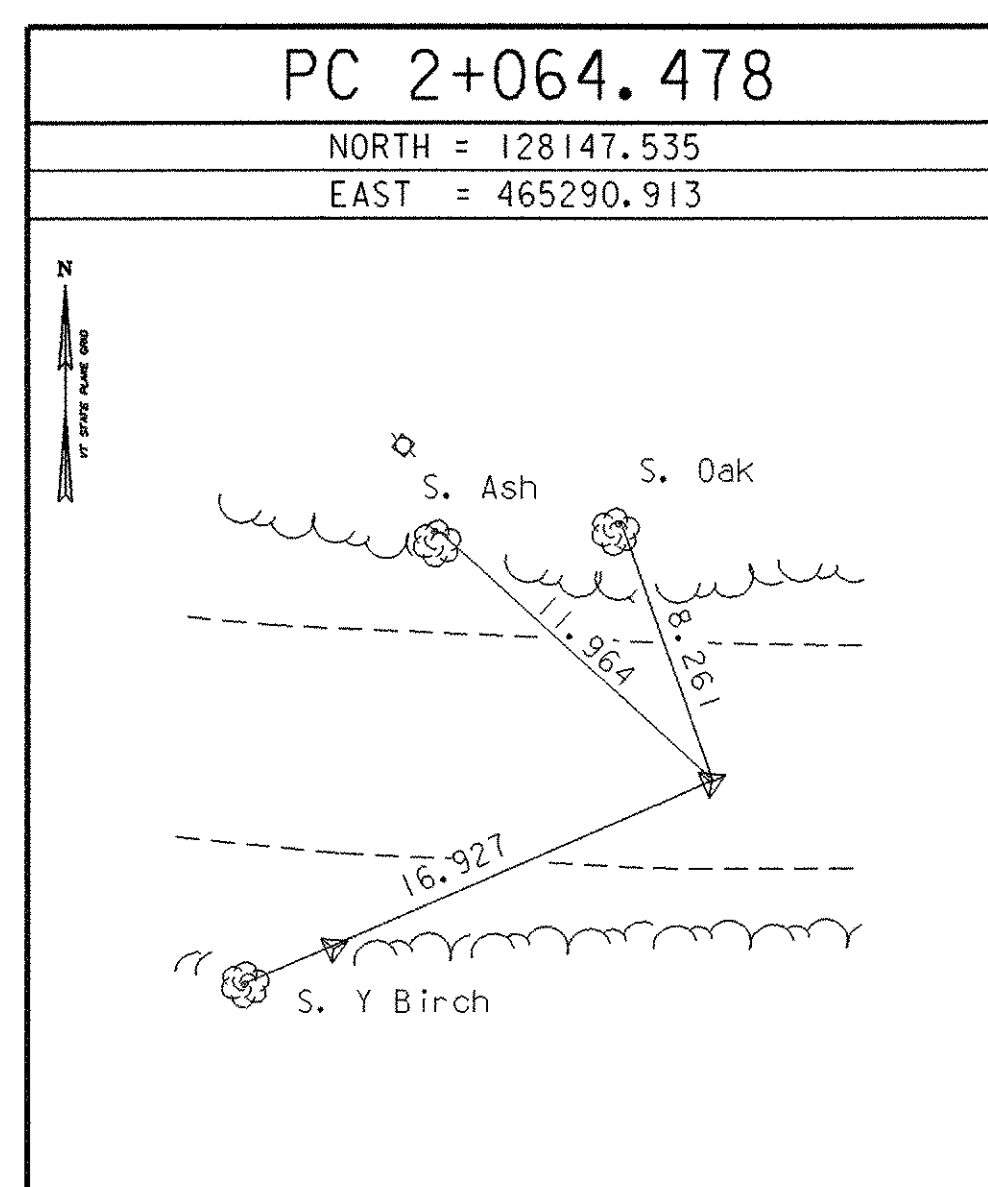


ALIGNMENT TIES



* Main Traverse Completed 01/31/96 by L. Orvis P.C. & R. Bullock

ALIGNMENT TIES



* Alignment Staked 03/25/99 by L. Orvis P.C. & R. Bullock

DATUM	
VERTICAL	NAVD 88
HORIZONTAL	NAD 83/92
ADJUSTMENT	none

PROJECT NAME:	Mendon
PROJECT NUMBER:	BRO 1443 (35)
FILE NAME:	95j290/survey/xj290ti.dgn
PROJECT LEADER:	C. KELLER
DESIGNED BY:	M. EVANS-MONGEON
PLOT DATE:	18-NOV-2005
DRAWN BY:	R. Bullock
CHECKED BY:	
SHEET	13 OF 94