

CONSTRUCT ACCESS
STA. 1+019.099 LT (60° ASKEW)

GUARD RAIL - HEAVY DUTY STEEL BEAM
W/ WOOD POSTS, WEATHERING

STA. 1+029.100 - 1+035.59 LT.
STA. 1+031.80 - 1+035.59 RT.
STA. 1+060.36 - 1+073.36 LT.
STA. 1+060.36 - 1+073.26 RT.

BRIDGE RAILING - HEAVY DUTY
STEEL BEAM/CURB MOUNTED/HANDRAIL (MOD)

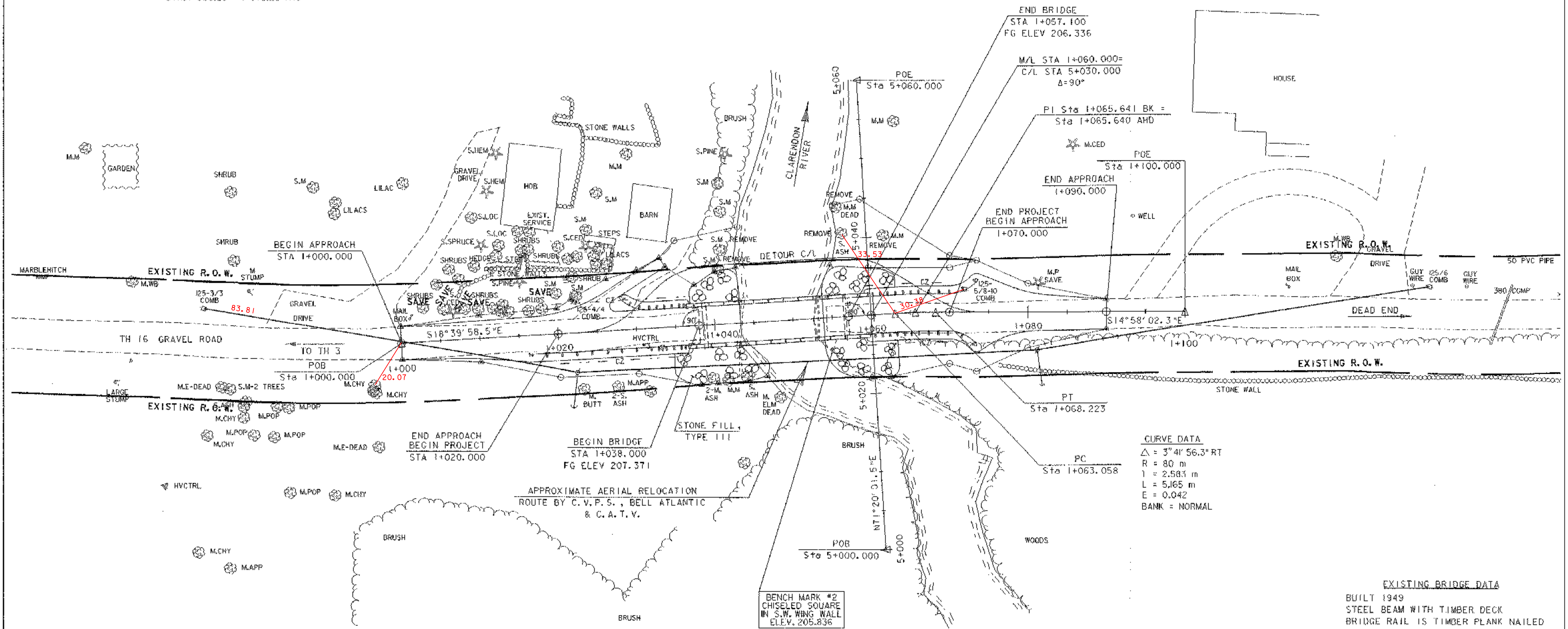
STA. 1+035.59 - 1+060.36 LT.
STA. 1+035.59 - 1+060.36 RT.

MANUFACTURED TERMINAL END DETAIL
(TANGENT/IMOD.)

STA. 1+06.18 - 1+031.80 RT.

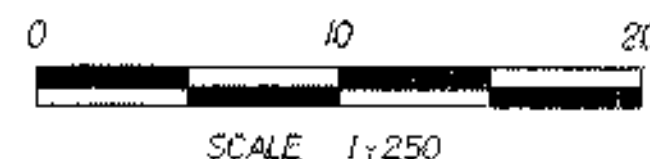
ANCHOR FOR STEEL BEAM RAIL

STA. 1+031.000 LT.
STA. 1+071.40 LT. & RT.



EXISTING BRIDGE DATA
 BUILT 1949
 STEEL BEAM WITH TIMBER DECK
 BRIDGE RAIL IS TIMBER PLANK NAILED TO TIMBER POSTS
 DECK WIDTH = 4298
 SPAN LENGTH = 12.497
 ABUTMENT NO. 1 IS LAID UP STONE
 ABUTMENT NO. 2 IS CONCRETE
 * TEMPORARY "MABEY" BRIDGE IS IN PLACE OVER EXISTING BRIDGE.

NOTE:
 THE RESIDENT ENGINEER WILL TRY TO SAVE AS MANY SHRUBS AS POSSIBLE THAT ARE NOT ALREADY MARKED AS "SAVE."



SHEET NAME: LAYOUT SHEET	
PROJECT NAME: CLARENDON	HIGHWAY NO.: TH 16
PROJECT NUMBER: BRO 1443(34)	BRIDGE NO.: 24
	OVER: CLARENDON RIVER
FILE NAME: /PW/951286/sj286bdr.dgn	PLOT DATE: 01-DEC-2005
PROJECT MANAGER: R. WHITCOMB	DRAWN BY: J. GILMORE
DESIGNED BY: C. CARLSON	IPARM NAME: sj286jdl1
BRIDGE SHEET NUMBER:	SHEET 9 OF 43