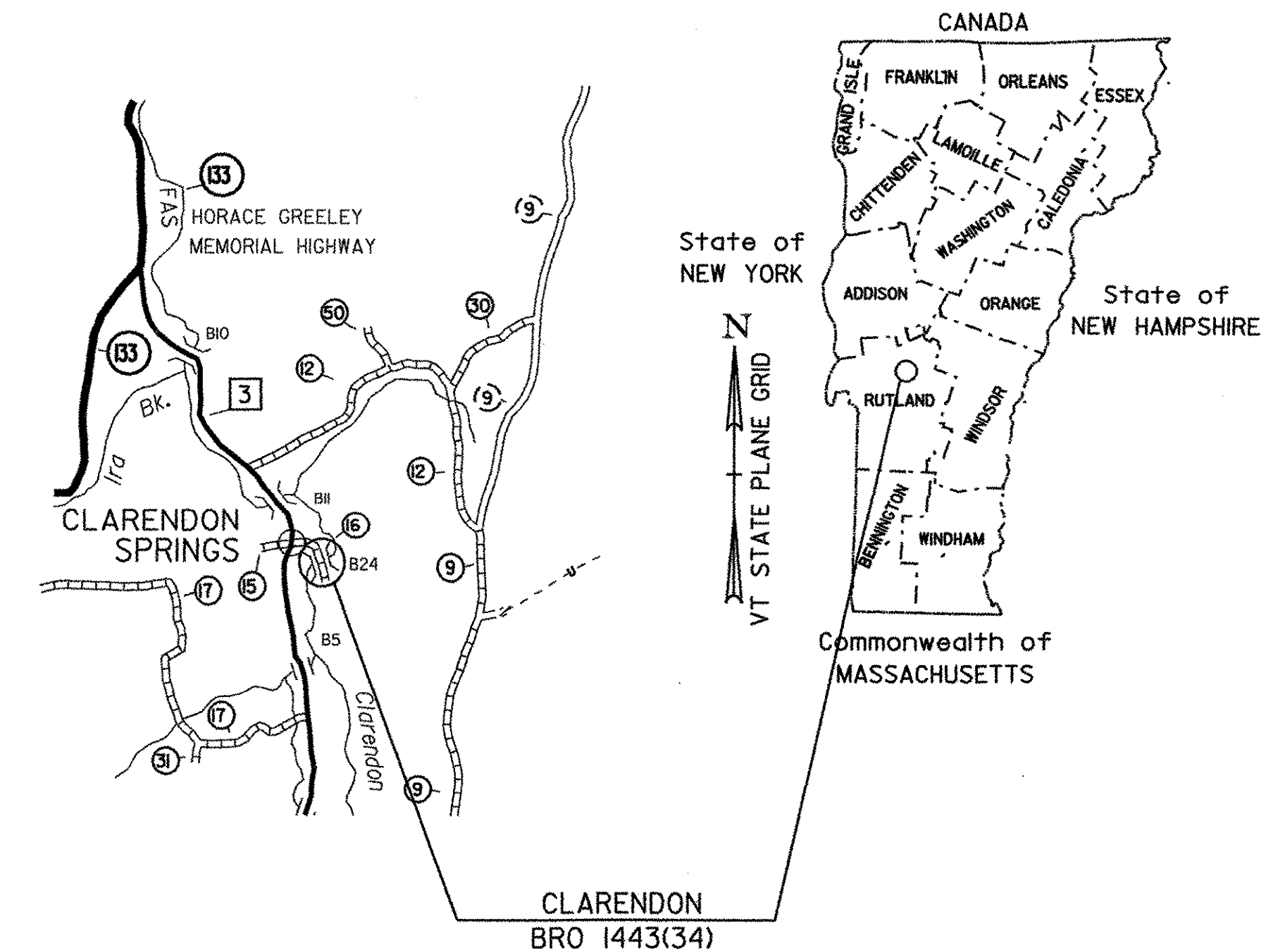


# STATE OF VERMONT AGENCY OF TRANSPORTATION



## PROPOSED IMPROVEMENT



RECORD PLANS	
CONTRACTOR:	BELDEN COMPANY INC. - RUTLAND, VT
RESIDENT ENGINEER:	DAVE HOSKING
CONSTRUCTION BEGAN:	APRIL 1, 2006
CONSTRUCTION COMPLETE:	OCTOBER 24, 2006
RECORD PLANS BY:	DAVE HOSKING & JUDY GILMORE
I HEREBY CERTIFY THAT ALL THE CONSTRUCTION REQUIRED BY THIS SET OF DRAWINGS HAS BEEN ACCOMPLISHED AS INDICATED HEREIN.	
BY:	<i>Dave Hosking</i> RESIDENT ENGINEER
DATE:	3-28-07
NOTE: Any further information concerning final quantities, amounts or other details relative to this project may be found at Central Files in the electronic archives.	

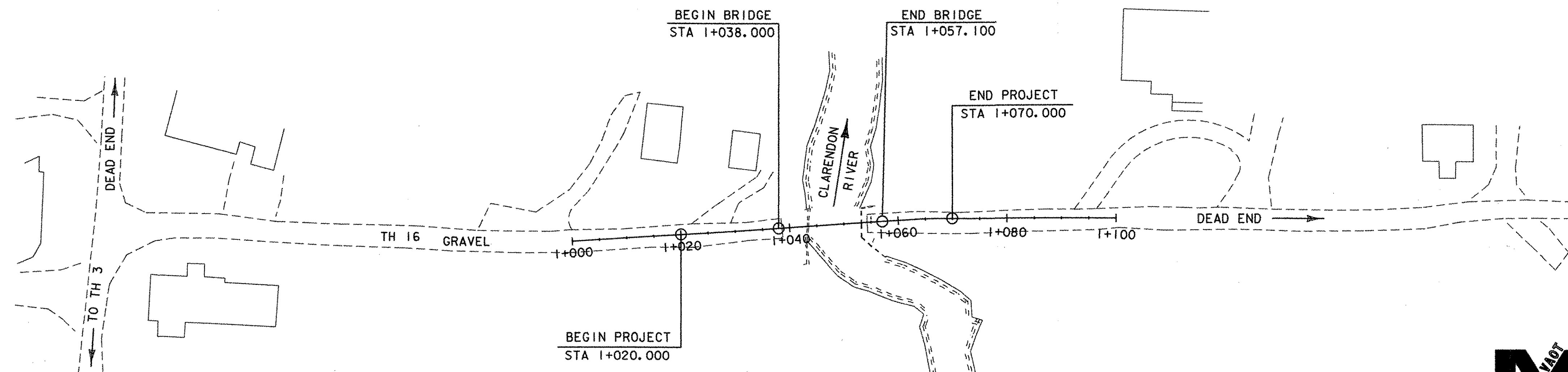
TOWN OF CLARENDON  
COUNTY OF RUTLAND

ROUTE NO : TH #16, CLASS 3 (LOCAL) BRIDGE NO : 24

PROJECT LOCATION : LOCATED APPROXIMATELY .3 KM FROM THE INTERSECTION OF TH 3 AND TH 16.

PROJECT DESCRIPTION : REPLACEMENT OF THE EXISTING STRUCTURE WITH MINIMAL APPROACH ROADWAY AND CHANNEL WORK.

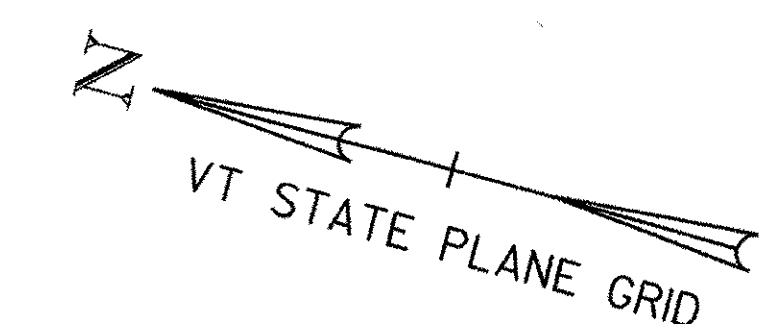
LENGTH OF STRUCTURE : 19.100 METERS.  
LENGTH OF ROADWAY : 30.900 METERS.  
LENGTH OF PROJECT : 50.000 METERS.



CONVENTIONAL SYMBOLS	
COUNTY LINE	
TOWN LINE	
LIMITS OF ACCESS	
POINT OF ACCESS	
FENCE LINE	
STONE WALL	
TRAVELED WAY	
GUARD RAIL	
RAILROAD	
SURVEY LINE	
CULVERT	
POWER POLE	
TELEPHONE POLE	
TREES	
CONTROL OF ACCESS	
PROPERTY LINE	
R.O.W. TAKING LINE	
SLOPE RIGHTS	
TOP OF CUT	
TOE OF SLOPE	

SURVEYED BY : L. ORVIS  
SURVEYED DATE : JAN. 1996

DATUM  
VERTICAL NAVD 88  
HORIZONTAL NAD 83/92 GPS



**Metric**  
UNLESS NOTED OTHERWISE  
STATIONS ARE IN KILOMETERS  
ELEVATIONS ARE IN METERS  
DIMENSIONS ARE IN MILLIMETERS

THESE PLANS ARE SUBJECT TO SUCH ENGINEERING CHANGES AS MAY BE REQUIRED BY THE FEDERAL HIGHWAY ADMINISTRATION OR THE DIRECTOR OF PROGRAM DEVELOPMENT.

CONSTRUCTION IS TO BE CARRIED ON IN ACCORDANCE WITH THESE PLANS AND THE STANDARD SPECIFICATIONS FOR CONSTRUCTION DATED 2001, AS APPROVED BY THE FEDERAL HIGHWAY ADMINISTRATION ON JANUARY 4, 2001 FOR USE ON THIS PROJECT, INCLUDING ALL SUBSEQUENT REVISIONS AND SUCH REVISED SPECIFICATIONS AND SPECIAL PROVISIONS AS ARE INCORPORATED IN THESE PLANS.

/PW/95J286/sj286bdr.dgn sj286+1.I PLOTTED: 07-OCT-2005

DIRECTOR OF PROGRAM DEVELOPMENT	
APPROVED: <i>[Signature]</i>	DATE: 10-7-05
PROJECT MANAGER : R. R. WHITCOMB	
PROJECT NAME :	CLARENDON
PROJECT NUMBER :	BRO 1443(34)
SHEET 1 OF 43 SHEETS	