

**HEAVY DUTY STEEL BEAM GUARD RAIL,
TYPE IV w/ WOOD POSTS**

STA 1+121.62 RT. - 1+136.49 RT.
STA 1+141.00 LT. - 1+143.49 LT.
STA 1+147.91 RT. - 1+155.00 RT.
STA 1+155.05 LT. - 1+166.38 LT.

ANCHOR FOR STEEL BEAM RAIL

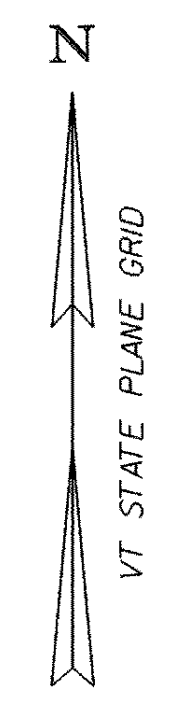
STA 1+125.05 RT.
STA 1+151.72 RT.
STA 1+162.84 LT.

BRIDGE RAILING, HEAVY DUTY STEEL BEAM/FASCIA MOUNTED, TYPE B

STA 1+136.49 RT. - 1+147.91 RT.
STA 1+143.49 LT. - 1+155.05 LT.

CONSTRUCT GRAVEL DRIVE

STA 1+135.20 LT.



CURVE NO. 1 DATA

$\Delta = 23^{\circ}56'29''$ LT.
R = 80.000
T = 16.962
L = 33.428
E = 1.778
2T-L = 0.496
BANKING = N. C.

CURVE NO. 2 DATA

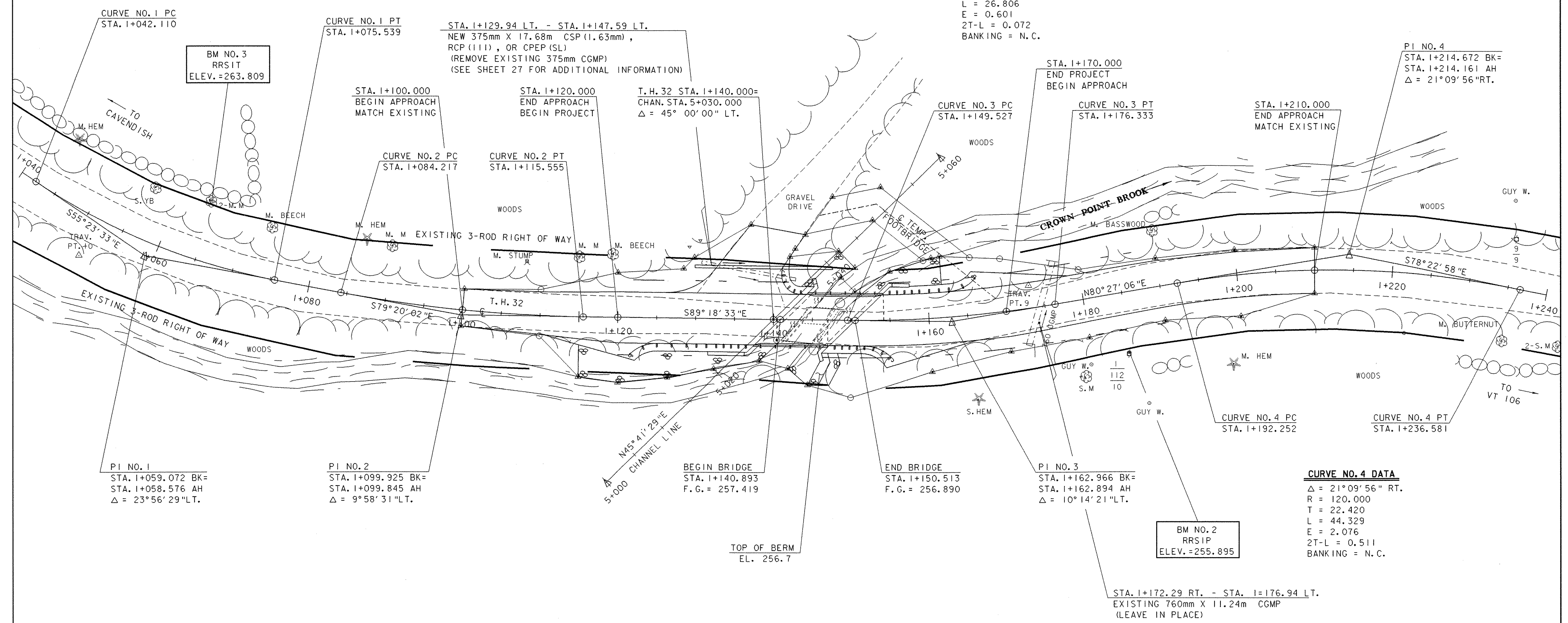
$\Delta = 9^{\circ}58'31''$ LT.
R = 180.000
T = 15.709
L = 31.338
E = 0.684
2T-L = 0.080
BANKING = N. C.

CURVE NO. 3 DATA

$\Delta = 10^{\circ}14'21''$ LT.
R = 150.000
T = 13.439
L = 26.806
E = 0.601
2T-L = 0.072
BANKING = N. C.

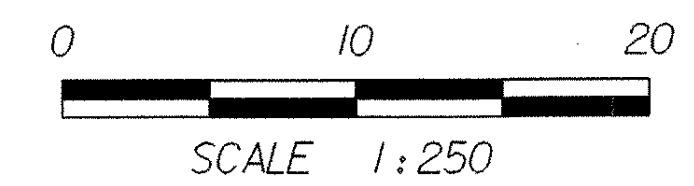
CURVE NO. 4 DATA

$\Delta = 21^{\circ}09'56''$ RT.
R = 120.000
T = 22.420
L = 44.329
E = 2.076
2T-L = 0.511
BANKING = N. C.



EXISTING BRIDGE DATA

CONCRETE SLAB DECK SUPPORTED BY
CONCRETE FACED LAID-UP STONE ABUTMENTS
BRIDGE LENGTH: 4.1m
BRIDGE WIDTH: 4.5m



PROJECT NAME: WEATHERSFIELD	
PROJECT NUMBER: TH3 9514	
FILE NAME: /str3/95j284/sj284i01	PLOT DATE: 12-FEB-2004
PROJECT LEADER: R. WHITCOMB	DRAWN BY: G. ROY
DESIGNED BY: T. A. SUMNER	CHECKED BY: T. A. SUMNER
LAYOUT SHEET	SHEET 8 OF 31