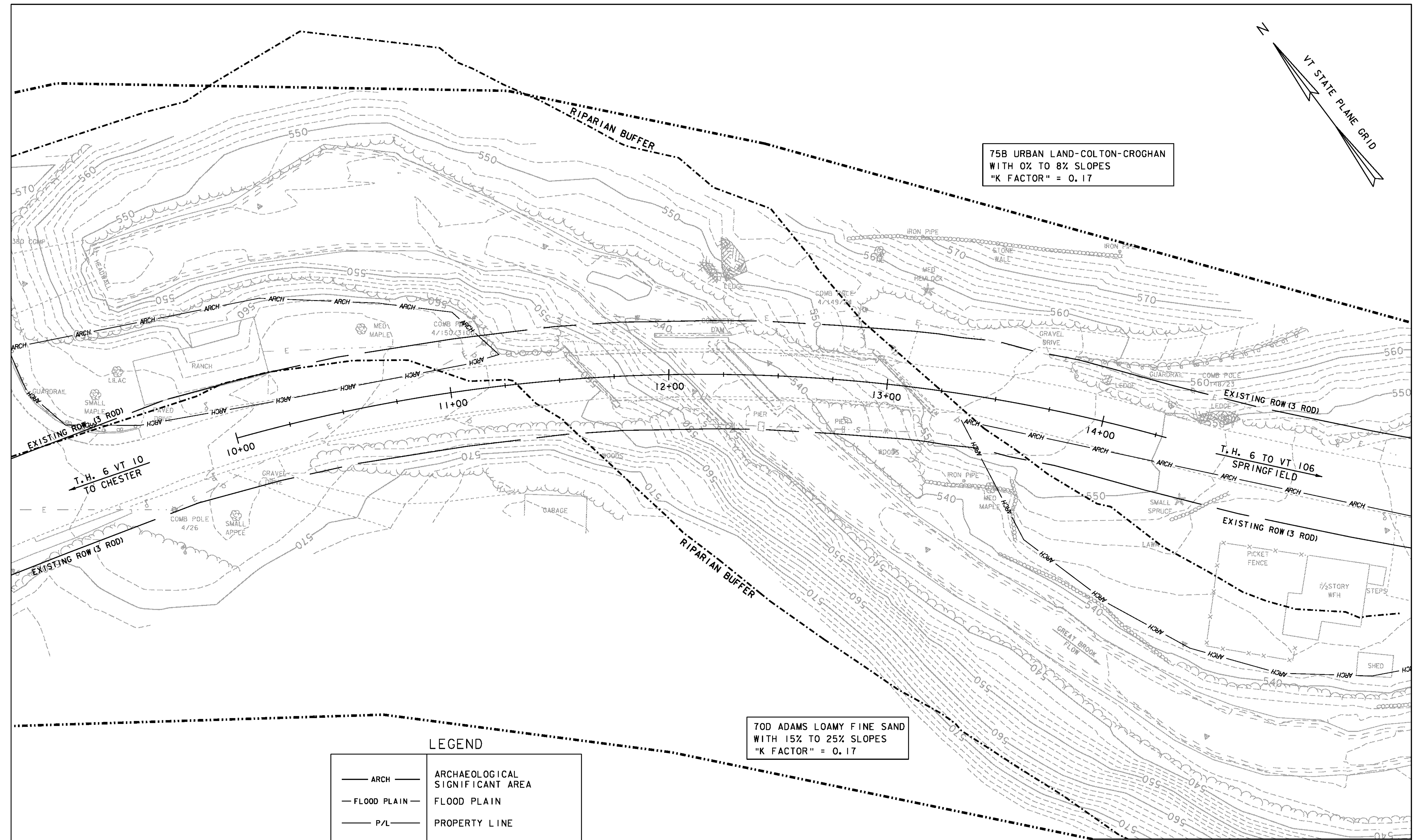


75B URBAN LAND-COLTON-CROGHAN  
WITH 0% TO 8% SLOPES  
"K FACTOR" = 0.17



70D ADAMS LOAMY FINE SAND  
WITH 15% TO 25% SLOPES  
"K FACTOR" = 0.17

**LEGEND**

— ARCH —	ARCHAEOLOGICAL SIGNIFICANT AREA
— FLOOD PLAIN —	FLOOD PLAIN
— P/L —	PROPERTY LINE
— — — — —	RIGHT-OF-WAY LINE
— · — · — ·	RIPARIAN BUFFER
— · — · — ·	SOIL BOUNDARY

**EPSC EXISTING CONDITIONS**  
SCALE 1" = 20'-0"  
20 0 20

75B URBAN LAND-COLTON-CROGHAN  
WITH 0% TO 8% SLOPES  
"K FACTOR" = 0.17

PROJECT NAME: **SPRINGFIELD**  
PROJECT NUMBER: **BRO 1442(26)**  
FILE NAME: s95j282EPSC\_BDR.dgn  
PROJECT LEADER: K. HIGGINS  
DESIGNED BY: J. LACROIX  
EPSC EXISTING CONDITIONS  
PLOT DATE: 30-AUG-2011  
DRAWN BY: R. PELLETT  
CHECKED BY: J. SALVATORI  
SHEET 38 OF 52