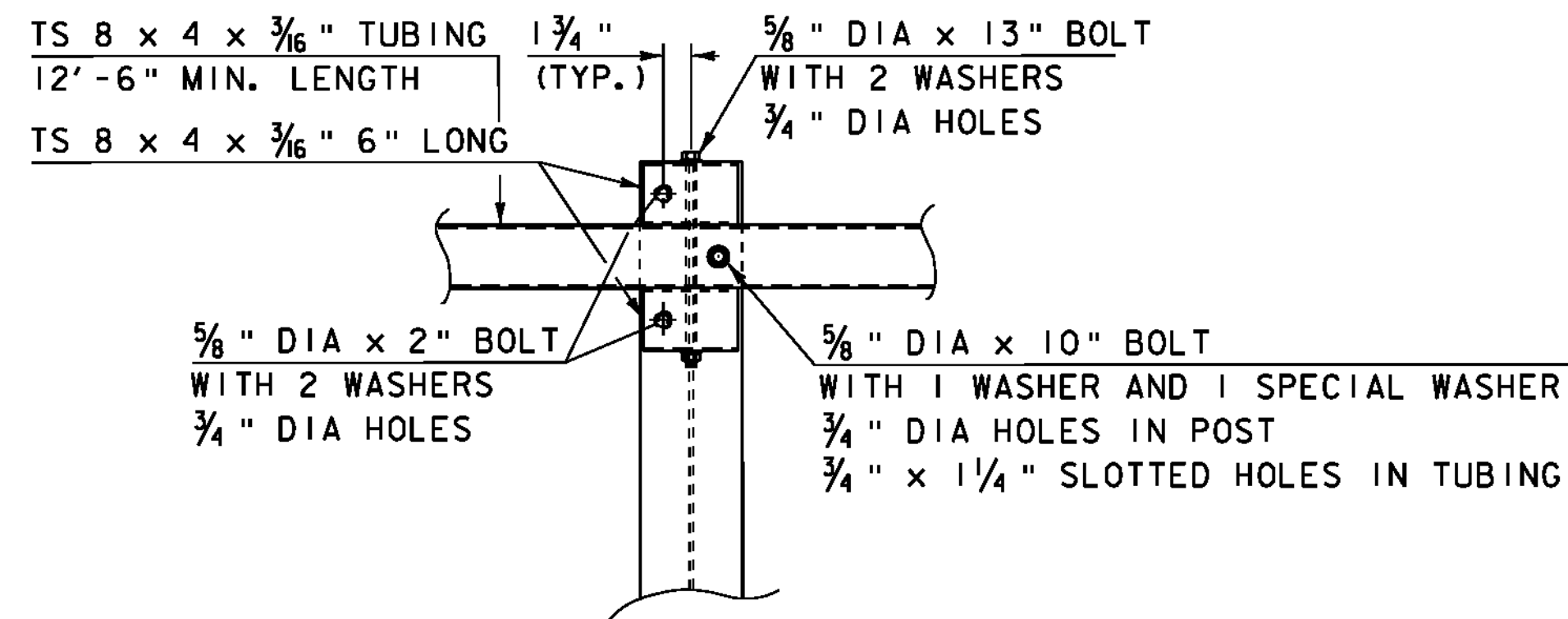


POST DETAIL
(NOT TO SCALE)



DETAIL A
STEEL BEAM GUARD RAIL NOT SHOWN
(NOT TO SCALE)

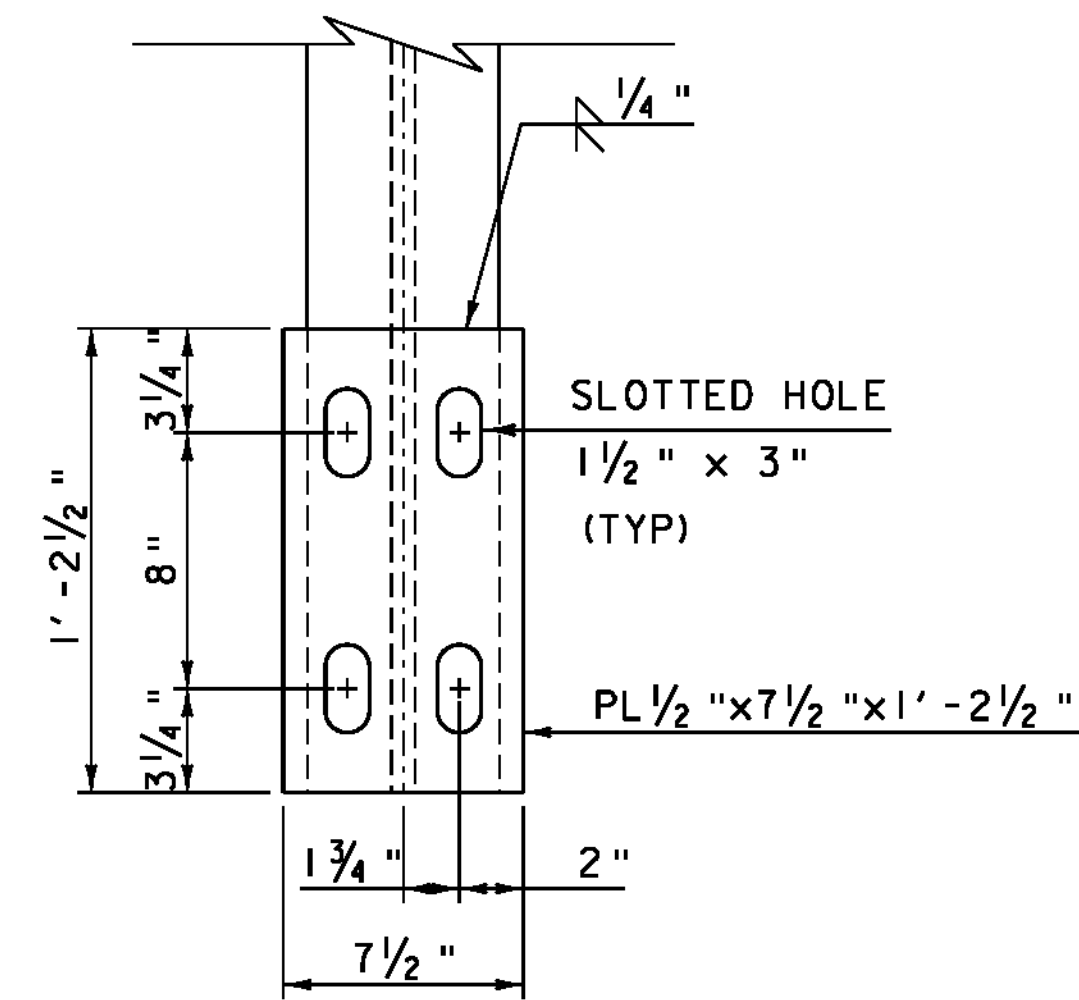
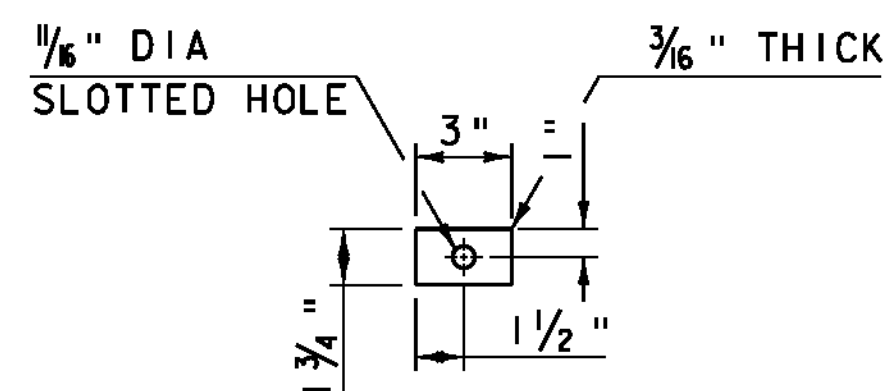
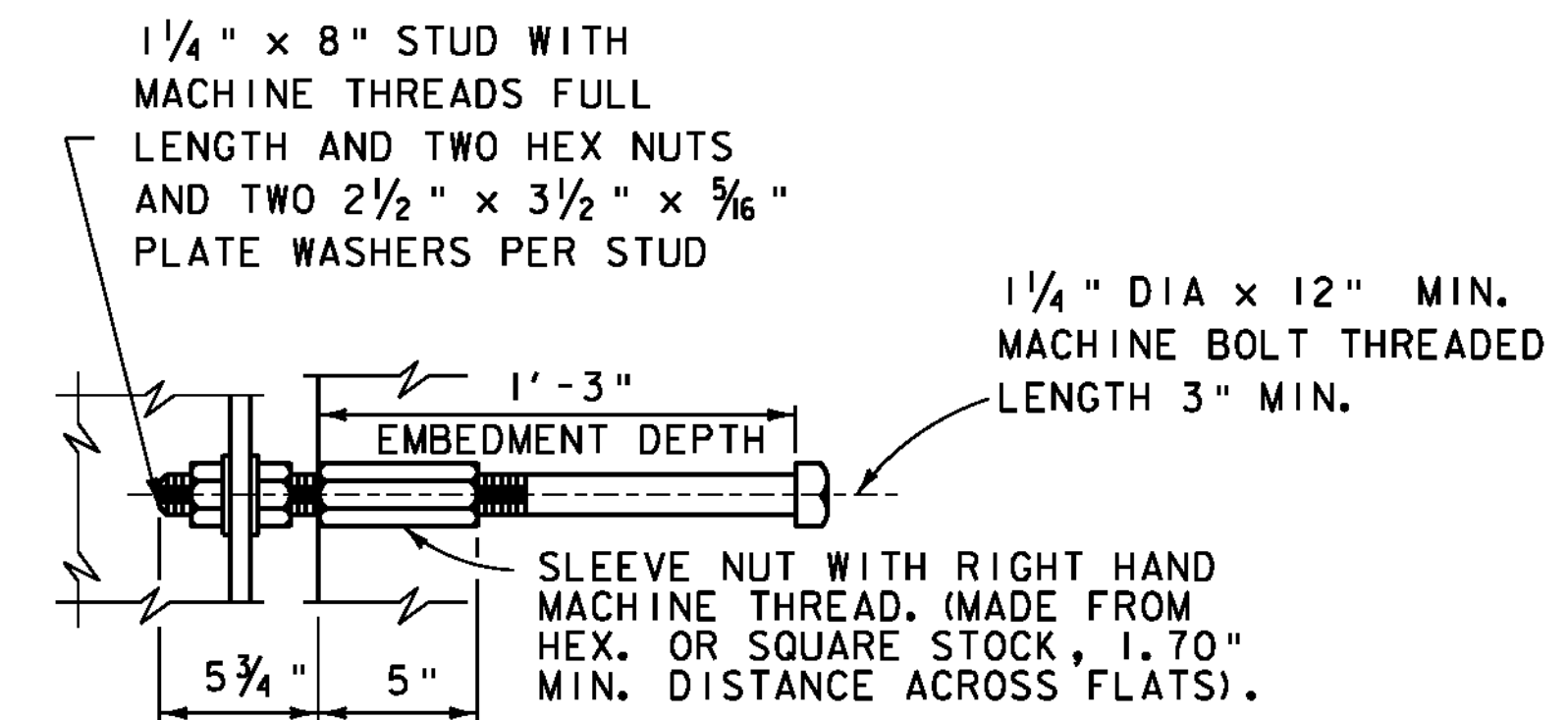


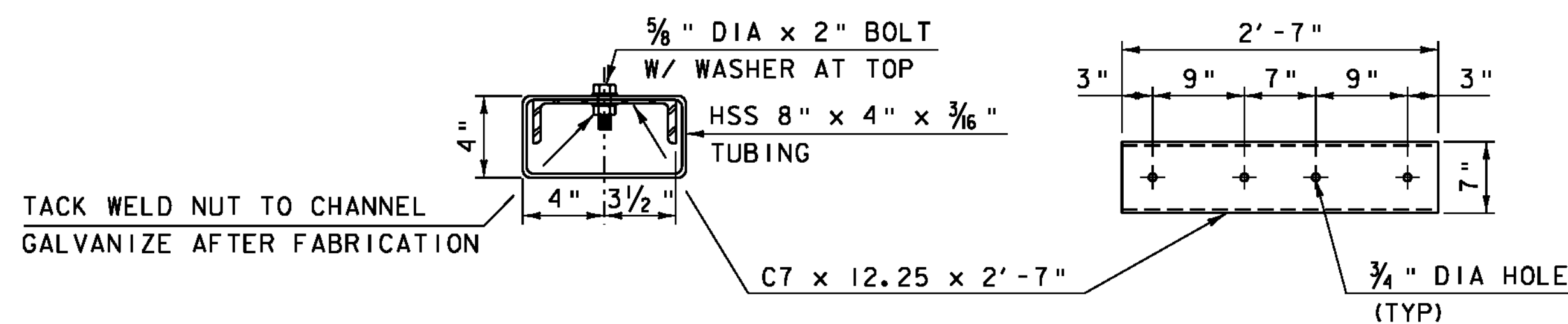
PLATE DETAIL - FRONT VIEW
(NOT TO SCALE)



SPECIAL WASHER DETAIL
NOT TO SCALE



ANCHOR DETAIL
(NOT TO SCALE)



SPLICE BAR DETAILS
NOT TO SCALE

NOTES:

1. SEE STANDARD DRAWING G-1 AND G1-d FOR ADDITIONAL DETAILS CONCERNING GUARDRAIL.
2. ALL APPROACH RAIL SHALL BE HEAVY DUTY STEEL BEAM GUARDRAIL.
3. ALL POSTS SHALL BE SET NORMAL TO GRADE.
4. A RAILING JOINT SPLICE SHALL BE PROVIDED AT EACH SUPERSTRUCTURE EXPANSION JOINT.
5. SPLICES FOR HEAVY DUTY STEEL BEAM GUARDRAIL SHALL LAP IN THE DIRECTION OF TRAFFIC.
6. SEE STANDARD DRAWING G-1 FOR DETAILS OF DELINEATORS. A DELINEATOR SHALL BE LOCATED AT EVERY FIFTH POST. PAYMENT SHALL BE INCIDENTAL TO THE APPLICABLE GUARDRAIL ITEM.
7. ALL FIELD CUT OR DRILLED AREAS SHALL BE COATED WITH ZINC RICH PAINT.
8. THE STEEL TUBING SHALL BE SHOP BENT TO FIT THE APPLICABLE CURVE.
9. THE DROP-WEIGHT TEAR TEST IN SECTION 732 SHALL NOT APPLY TO THE STRUCTURAL TUBING ON THIS STANDARD.

PROJECT NAME: SPRINGFIELD
PROJECT NUMBER: BRO 1442(26)

FILE NAME: s95j282rail.dgn
PROJECT LEADER: K. HIGGINS
DESIGNED BY: J. SALVATORI
BRIDGE RAILING DETAIL SHEET

PLOT DATE: 30-AUG-2011
DRAWN BY: J. SALVATORI
CHECKED BY: J. LACROIX
SHEET 14 OF 52