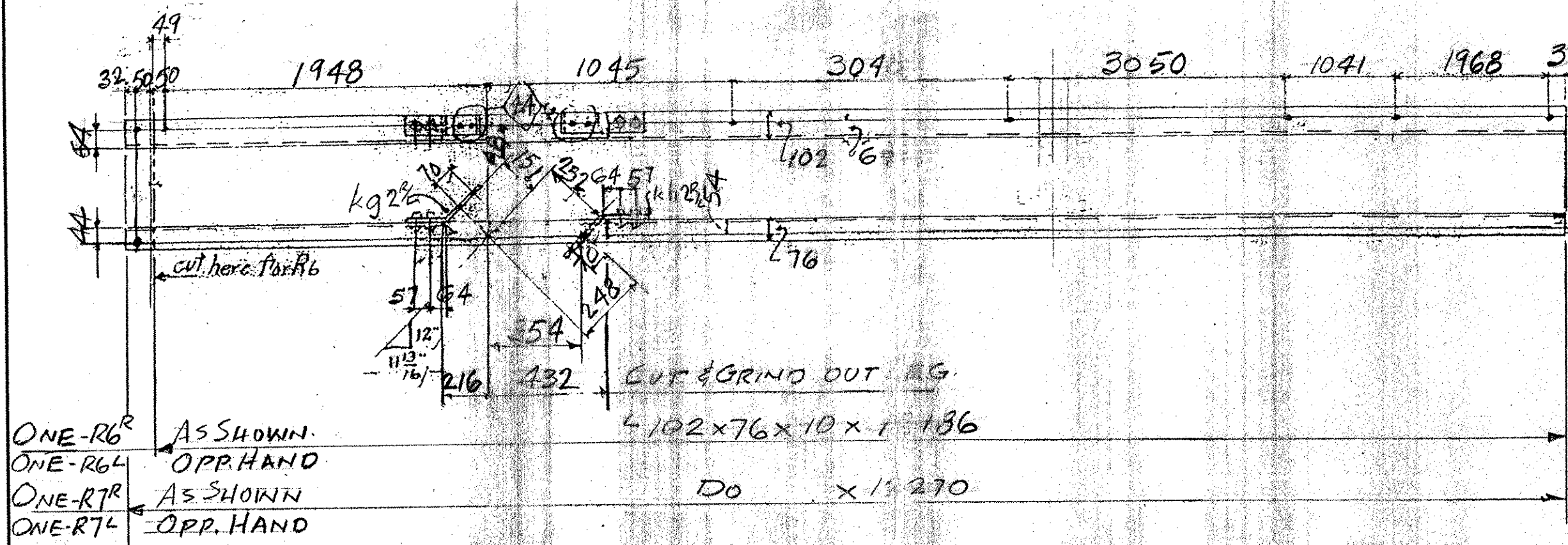
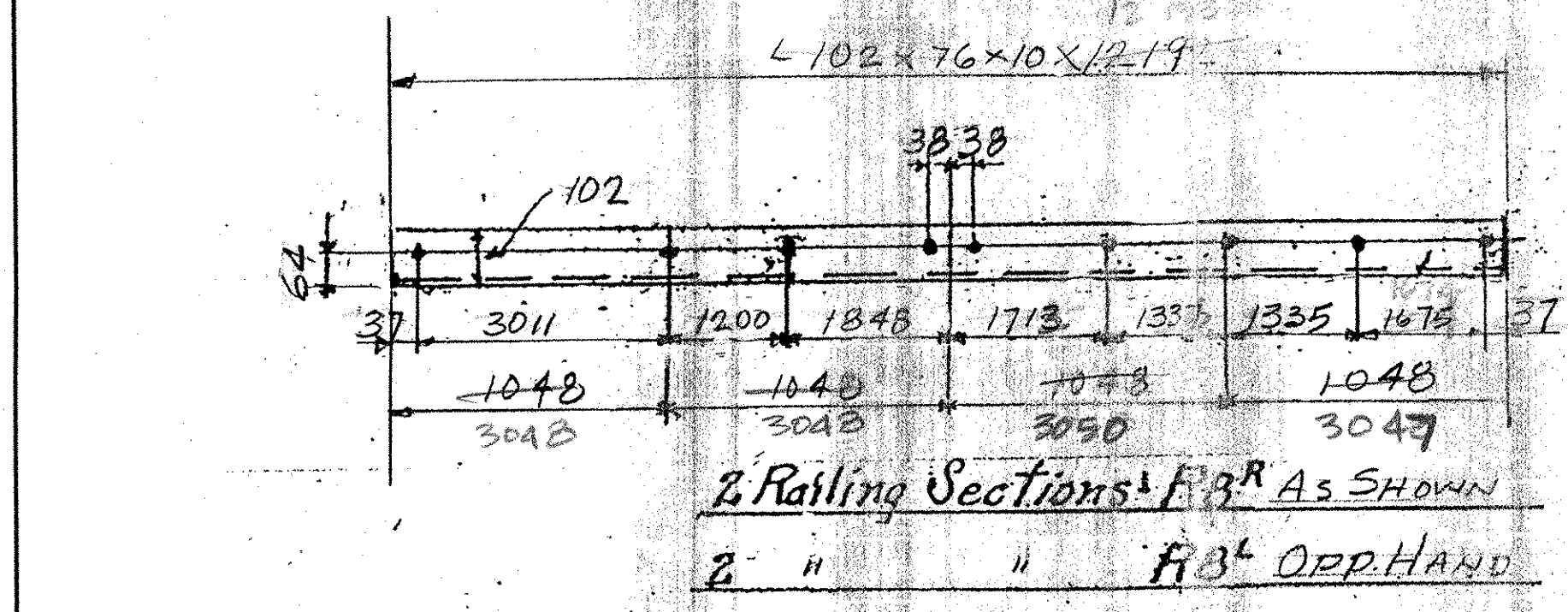


ONE RAILING SECTION - R4R AS SHOWN & NOTED
 ONE - DO DO - R4L - OPP. HAND & NOTED
 ONE - DO DO - R5R - AS SHOWN & NOTED
 ONE - DO DO - R5L - OPP. HAND & NOTED

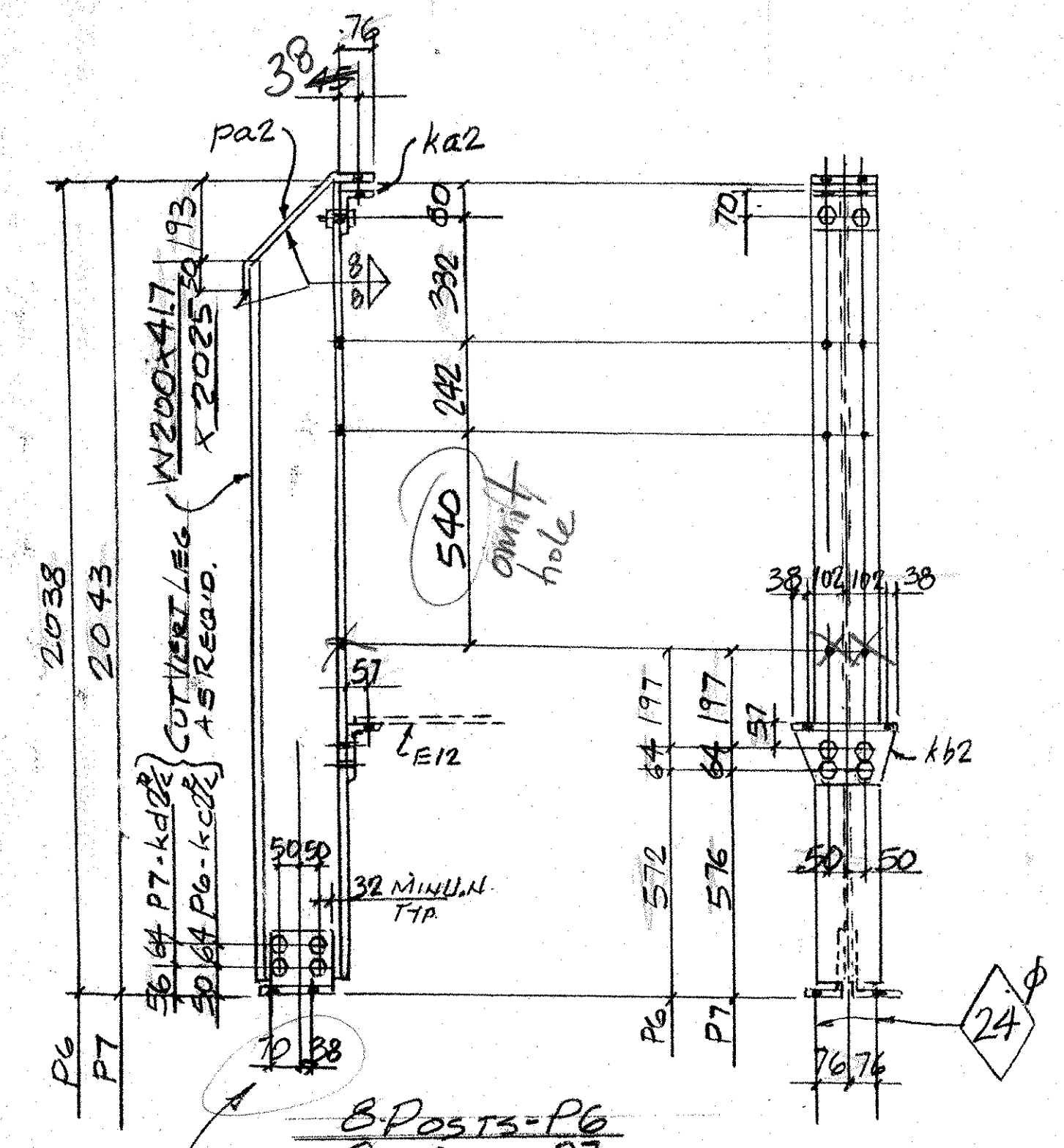


ONE - R6R AS SHOWN
 ONE - R6L OPP. HAND
 ONE - R7R AS SHOWN
 ONE - R7L OPP. HAND

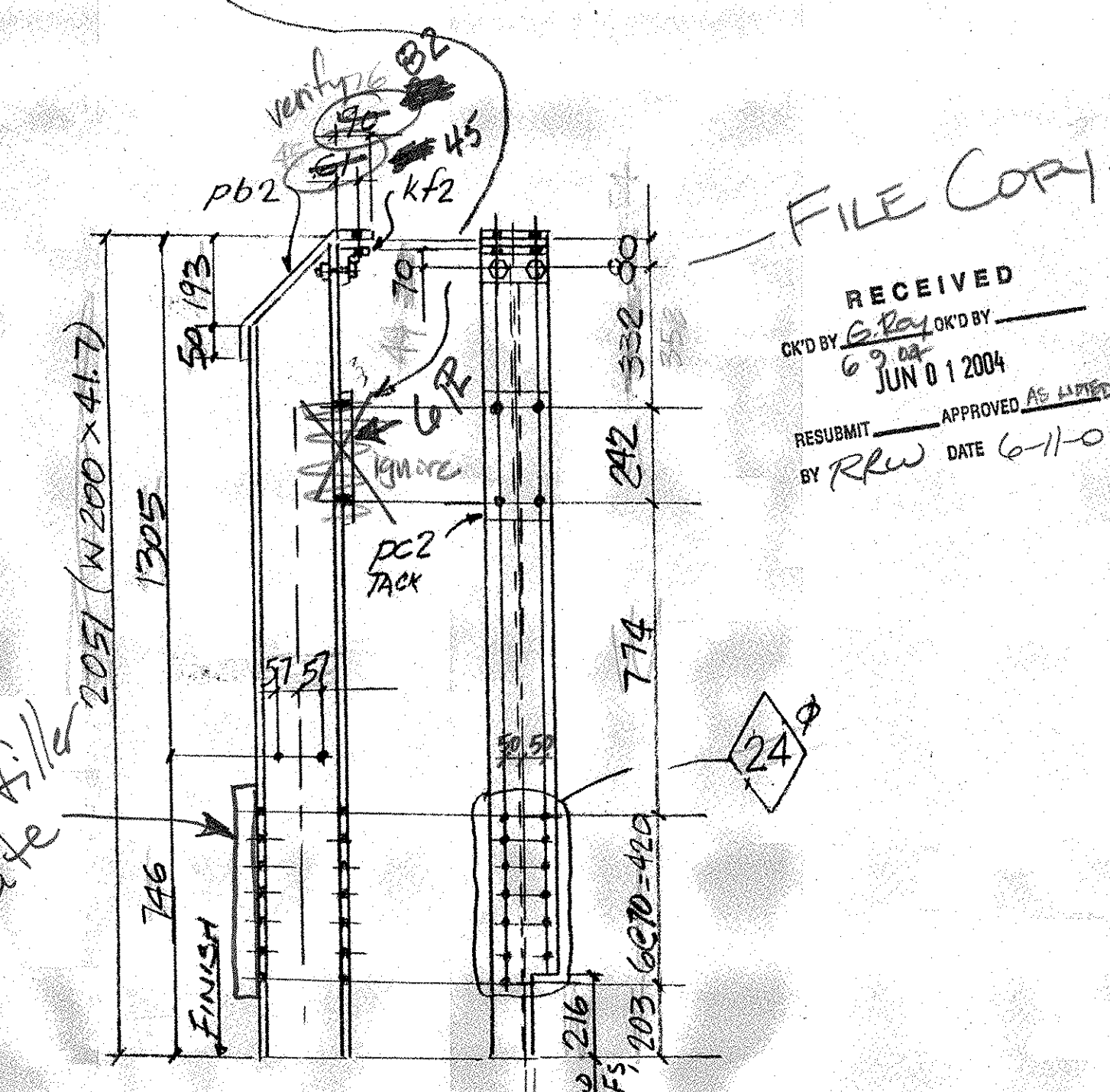


2 Railing Sections - R3R AS SHOWN
 2 " " R3L OPP. HAND

ADJUSTMENTS MADE DUE TO DIFF. DEPTHS OF RAIL POSTS.



3 POSTS - P6
 8 - DO - P7
 33, 127, 335, 50
 R9.5 x 280 x 545
 E12-16 REQ'D.



2 - POSTS - P8R - AS SHOWN
 2 - DO - P8L - OPP. HAND

FOR LOCATING RAIL ITEMS SEE ELEVATION D D ON REFERENCE SHEET 7 OF 11 SHEET 74 OF 78

PLANS DRAWN USING METRIC DIMENSIONS

SHOP BILL				JOB NO. 208	DRG. NO. R2			
PAGE	LINE	NO.	DESCRIPTION	MM	ASSEM. MARK	SHIPPING MARK	REMARKS	WEIGHT
	8		W200x41.7	2025		P6		
	8		DO	2025		P7		
	16		R9.5x166	427		P92		
	16		L102x76x9.5	166		K22		
	16		L152x90x9.5	279		K22		
	16		L152x152x9.5	184		K22		
	16		DO	184		K22		
	96		M19 BOLTS	64		SHOP	W/NEE WASH	
	64		DO	70			DO	
	2		W200x41.7	2051		P8R		
	2		DO	2051		P8L		
	4		R9.5x166	441		P22		
	4		R9.5x166	300		P22		
	4		L102x90x9.5	166		K22		
	8		M19 BOLTS	64		SHOP	W/NEE WASH	
	16		R9.5x280	545		E12		
	2		C152x12.2	12192		R3R		
	2		DO	12192		R3L		
	4		L102x76x7.9	12192		R22		
	4		DO	12192		R22		
	1		C152x12.2	12186		R4R		
	1		DO	12186		R4L		
	1		DO	12270		R6R		
	1		DO	12270		R5L		
	4		L102x76x7.9	10160		R22		
	4		DO	10516		R22		
	4		DO	1625		R22		
	4		DO	1295		R22		
	1		L102x76x10	12186		R6R		
	1		DO	12186		R6L		
	1		DO	12270		R7R		
	1		DO	12270		R7L		
	4		R9.5x86	330		K22	BEND	
	4		DO	330		K22	DO	
	16		M19 BOLTS	57		SHOP	W/NEE WASH	
	2		L102x76x10	12192		R8R		
	2		DO	12192		R8L		
	160		M19 BOLTS	57		FIELD	W/NEE WASH	
	144		DO	70		DO		
	16		DO	83		DO		

OUT FOR APPROVAL	5-21-04								
OUT FOR APPROVAL									
ISSUED TO SHOP									
FIELD & OFFICE									

REV.	REMARKS	DATE	DWN	CHK	APP	Q.A.	NO.	DIA.	LGT	TYPE	WASHER
	PROJECT NO. BHO-1442 (25) STATE PROJECT NO. 19 (BROOKLINE)										
	MATERIAL: A572M ELECTRODES: PER PROC HOLES: 22 9 SHOP BOLTS: M19										
	SURFACE PREP. & PAINT: 3 COAT PAINT SYSTEM PER SECTION 513 FINAL COAT - GREEN - COLOR CHIP #14062										

3 COAT PAINT SYSTEM PER SECTION 513
 FINAL COAT - GREEN - COLOR CHIP #14062

DESCRIPTION: BRIDGE RAIL STRUCT	DRAWN BY: JPF	DATE: 5-04
JOB: BRIDGE REHAB. BROOKLINE - NEWFANE, VT.	CHKD BY:	
	APPROV BY:	
	Q.A.	

CUSTOMER: RENAUD BROTHERS.
CASCO BAY STEEL STRUCTURES, INC.
 75 SPRING HILL ROAD SACO, MAINE 04072
 PHONE (207) 282-7360 FAX. (207) 282-1179