

FIELD BOLTS

NO.	DESCRIPTION	mm	ASSEM. MARK	SHIPPING MARK	REMARKS	WEIGHT
186	M22 BOLTS	57		FIELD	W/N&W	
6		64				
108		70				
400		57				
20		64				
438		57				
120		64				
592		64				
192		70				
120		70				
120		83				
120	M22 BOLTS	89		FIELD	W/N&W	
96	M19 BOLTS	51		FIELD	W/N&W	
ALL BOLT AASHTO M16M-TYPE I - GALV.						

@ TOP PANEL POINTS

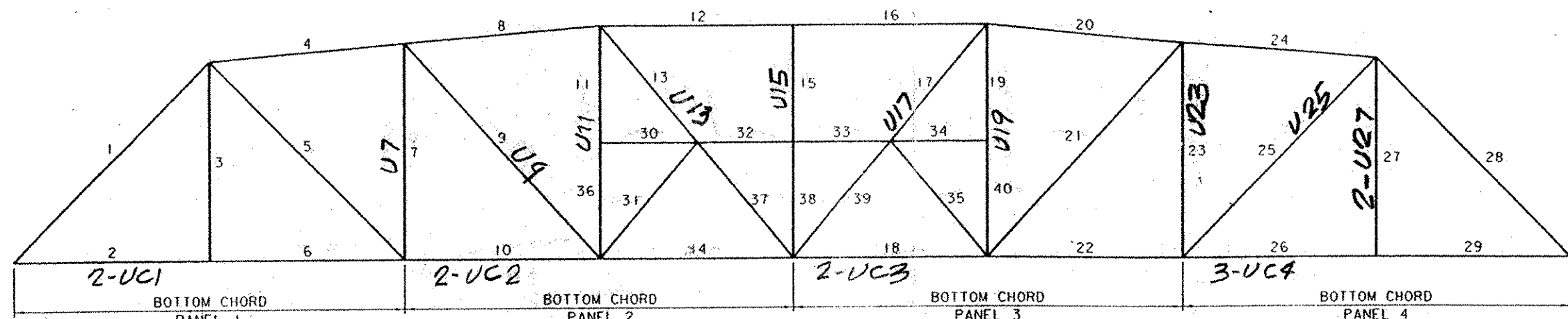
@ BOT. PANEL POINTS

@ BOT. CHORDS - PANELS 1&4

@ BOT. CHORDS - PANELS 2&3

@ BOT. CHORD SPLICES

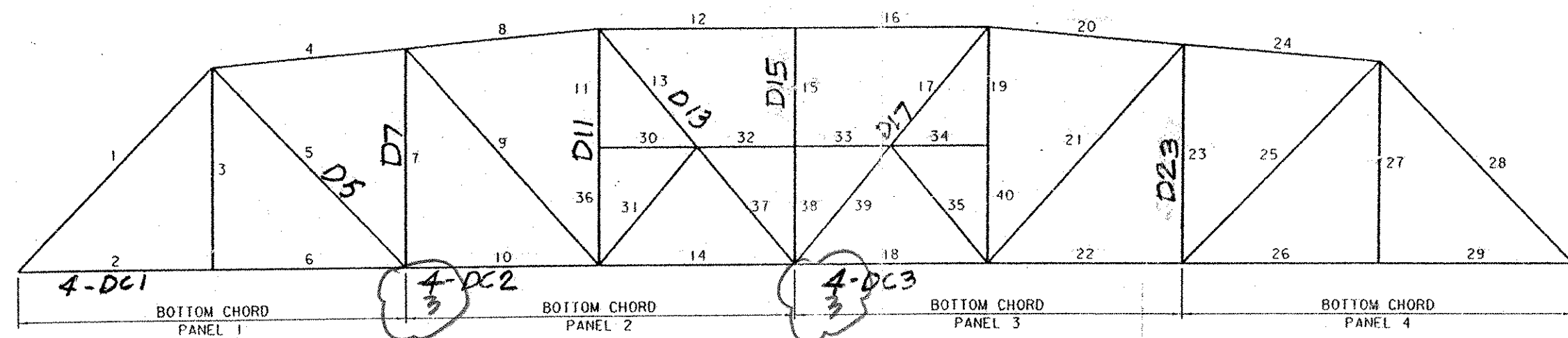
@ FIST. RAIL CLIPS TO NEW MEMBERS.



UPSTREAM ELEVATION  
(LOOKING UPSTREAM FROM E ROADWAY)  
NOT TO SCALE

REPAIR REQUIREMENTS

- BOTTOM CHORD PANEL 1: REPLACE 2 10F 41 152 X 102 X 9.5 ANGLES
- BOTTOM CHORD PANEL 2: REPLACE 2 10F 41 152 X 102 X 12.7 ANGLES
- BOTTOM CHORD PANEL 3: REPLACE 2 10F 41 152 X 102 X 12.7 ANGLES
- BOTTOM CHORD PANEL 4: REPLACE 3 10F 41 152 X 102 X 9.5 ANGLES
- MEMBER 7: REPLACE 228.6 CB - 56.6 KG/M
- MEMBER 9: REPLACE 228.6 CB - 47.6 KG/M
- MEMBER 11-36: REPLACE 228.6 CB - 56.6 KG/M
- MEMBER 13-37: REPLACE 228.6 CB - 47.6 KG/M
- MEMBER 15-38: REPLACE 228.6 CB - 56.6 KG/M
- MEMBER 17-39: REPLACE 228.6 CB - 47.6 KG/M
- MEMBER 19-40: REPLACE 228.6 CB - 56.6 KG/M
- MEMBER 23: REPLACE 228.6 CB - 56.6 KG/M
- MEMBER 25: REPLACE 228.6 CB - 56.6 KG/M
- MEMBER 27: REPLACE BOTH 89 X 89 X 7.9 ANGLES



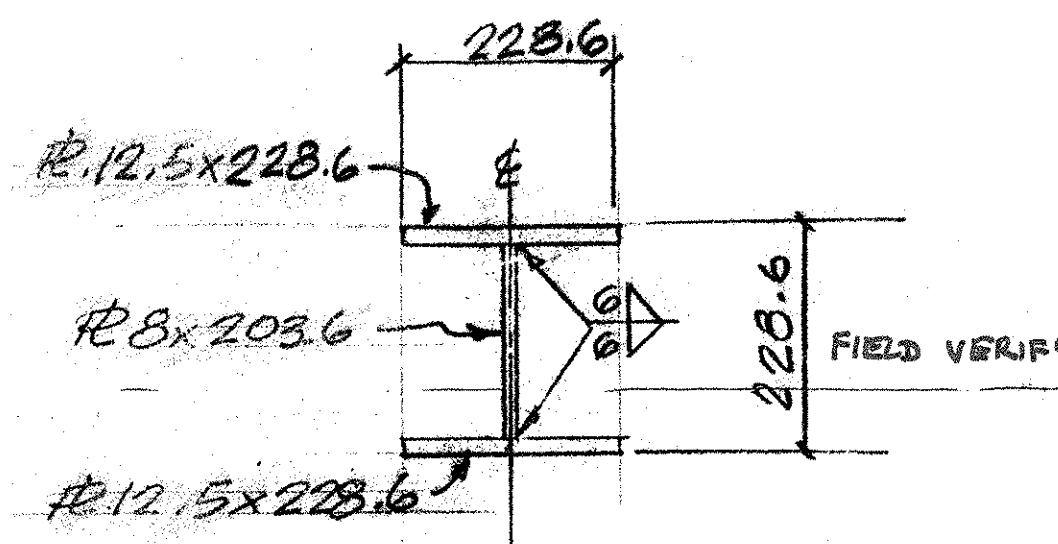
DOWNSTREAM ELEVATION  
(LOOKING DOWNSTREAM FROM E ROADWAY)  
NOT TO SCALE

REPAIR REQUIREMENTS

- BOTTOM CHORD PANEL 1: REPLACE 4 10F 41 152 X 102 X 9.5 ANGLES
- BOTTOM CHORD PANEL 2: REPLACE 3 10F 41 152 X 102 X 12.7 ANGLES
- BOTTOM CHORD PANEL 3: REPLACE 3 10F 41 152 X 102 X 12.7 ANGLES
- MEMBER 5: REPLACE 228.6 CB - 56.6 KG/M
- MEMBER 7: REPLACE 228.6 CB - 56.6 KG/M
- MEMBER 11-36: REPLACE 228.6 CB - 56.6 KG/M
- MEMBER 13-37: REPLACE 228.6 CB - 47.6 KG/M
- MEMBER 15-38: REPLACE 228.6 CB - 56.6 KG/M
- MEMBER 17-39: REPLACE 228.6 CB - 47.6 KG/M
- MEMBER 23: REPLACE 228.6 CB - 56.6 KG/M

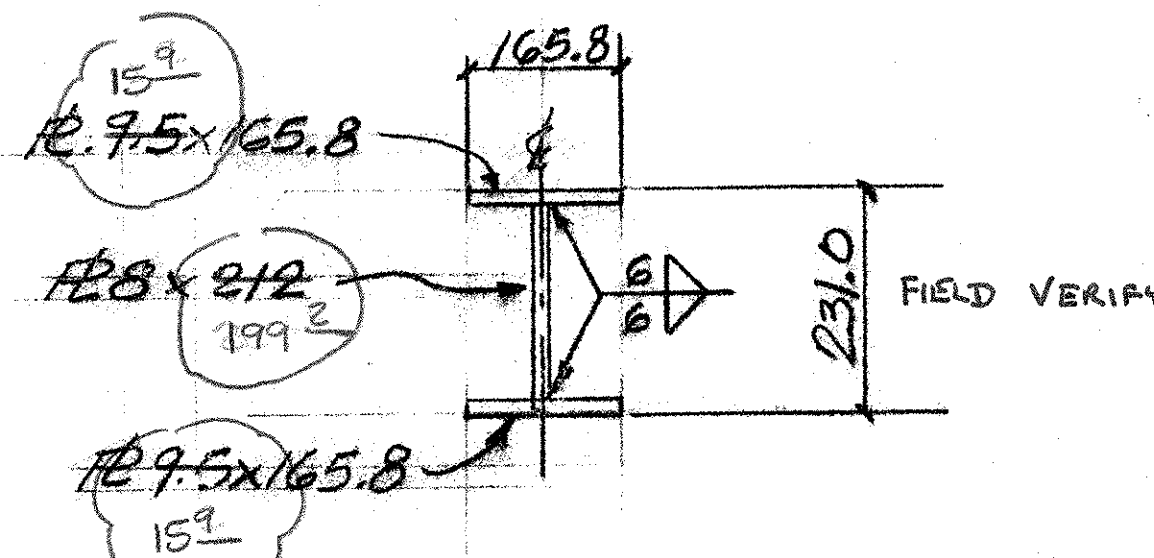
NOTE :

THE 228.6 MM AND 231.0 MM DIMENSIONS MUST BE FIELD VERIFIED PRIOR TO FABRICATION.



SHOP ASSEMBLY DETAIL (228.6 CB-56.6)

U7-U23-U11-U19-U15-U25  
D5-D7-D23-D11-D15



SHOP ASSEMBLY DETAIL (228.6 CB-47.6)

U9-U13-U17  
D13-D17

NOT-STRUCTURES

RECEIVED  
OK'D BY [Signature] OK'D BY [Signature]  
12-4-03  
DEC 0 2 2003  
RESUBMIT APPROVED [Signature]  
BY [Signature] DATE 12-31-03

PLANS DRAWN USING  
METRIC  
DIMENSIONS

AGM INFO		SHOP BILL				JOB NO.	DRG. NO.	
PAGE	LINE	NO.	DESCRIPTION	mm	ASSEM. MARK	SHIPPING MARK	REMARKS	WEIGHT
	2		L152x102x9.5	11,754			DC1	
	2		L152x102x12.7	12,179			DC2	
	2		DO	12,179			DC3	
	3		L152x102x9.5	11,754			UC1	
	2		L89x89x7.9	5785			UC2	
	1		228.6 CB-56.6	6820			UC3	
	1		DO	6820			UC4	
	2		R 8 X 203.6	6820	WEB			
	4		R12.5x228.6	6820	FLG			
	1		228.6 CB-47.6	8446			U9	
	1		R 8 X 212	8839	WEB			
	2		R 9.5 X 165.8	8839	FLG			
	1		228.6 CB-56.6	7353			U11	
	1		DO	7353			U19	
	2		R 8 X 203.6	7353	WEB			
	4		R12.5x228.6	7353	FLG			
	1		228.6 CB-47.6	8839			U13	
	1		DO	8839			U17	
	2		R 8 X 212	8839	WEB			
	4		R 9.5 X 165.8	8839	FLG			
	1		228.6 CB-56.6	7353			U15	
	1		R 8 X 203.6	7353	WEB			
	2		R12.5x228.6	7353	FLG			
	1		228.6 CB-56.6	7995			U25	
	1		R 8 X 203.6	7995	WEB			
	2		R12.5x228.6	7995	FLG			
	4		L152x102x9.5	11,754			DC1	
	3		L152x102x12.7	12,179			DC2	
	3		DO	12,179			DC3	
	1		228.6 CB-56.6	7995			U2	
	1		R 8 X 203.6	7995	WEB			
	2		R12.5x228.6	7995	FLG			
	1		228.6 CB-56.6	6820			D7	
	1		DO	6820			D23	
	2		R 8 X 203.6	6820	WEB			
	4		R12.5x228.6	6820	FLG			
	1		228.6 CB-56.6	7353			D11	
	1		R 8 X 203.6	7353	WEB			
	2		R12.5x228.6	7353	FLG			
	1		228.6 CB-47.6	8839			D13	
	1		DO	8839			D17	
	2		R 8 X 212	8839	WEB			
	4		R 9.5 X 165.8	8839	FLG			
	1		228.6 CB-56.6	7353			D15	
	1		R 8 X 203.6	7353	WEB			
	2		R12.5x228.6	7353	FLG			
							FIELD	

PAY ITEM 506.60

OUT FOR APPROVAL	11/19/03								
OUT FOR APPROVAL									
ISSUED TO SHOP									
FIELD & OFFICE									

REV.	REMARKS	DATE	DWN	CHK	APP	Q.A.	NO.	DIA.	LGT	TYPE	WASHER
PROJECT NO. BHD-1442 (25) STATE BRIDGE NO. 19 (BROOKLINE)											
MATERIAL: AASHTO M270 G345 ELECTRODES: PER PROC. HOLES: — SHOP BOLTS: —											
SURFACE PREP. & PAINT:											

PRIME COAT PER SPECIAL PROVISIONS												
STRUCTURES COPY												
DESCRIPTION: TRUSS MEMBERS										DRAWN BY: JPF		DATE: 11-03
JOB: BRIDGE REHAB. BROOKLINE-NEWFANE VT.										CHKD BY:		
										APPROV BY:		
										Q.A.		
CUSTOMER: RENAUD BROTHERS										JOB NO. 208		DRG. NO. 51
CASCO BAY STEEL STRUCTURES, INC.										75 SPRING HILL ROAD SACO, MAINE 04072		PHONE (207) 282-7360 FAX (207) 282-1179
										REV. Δ		