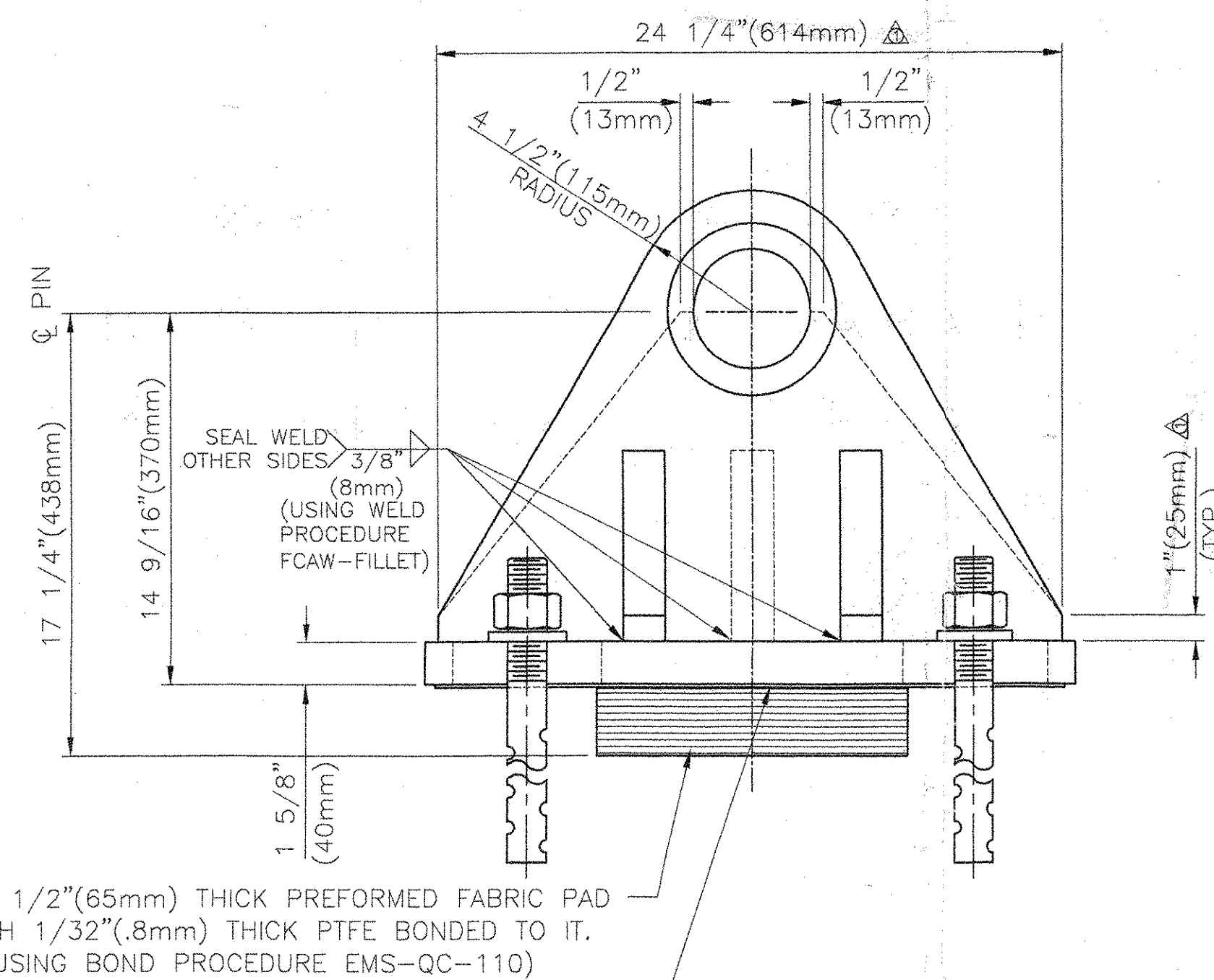
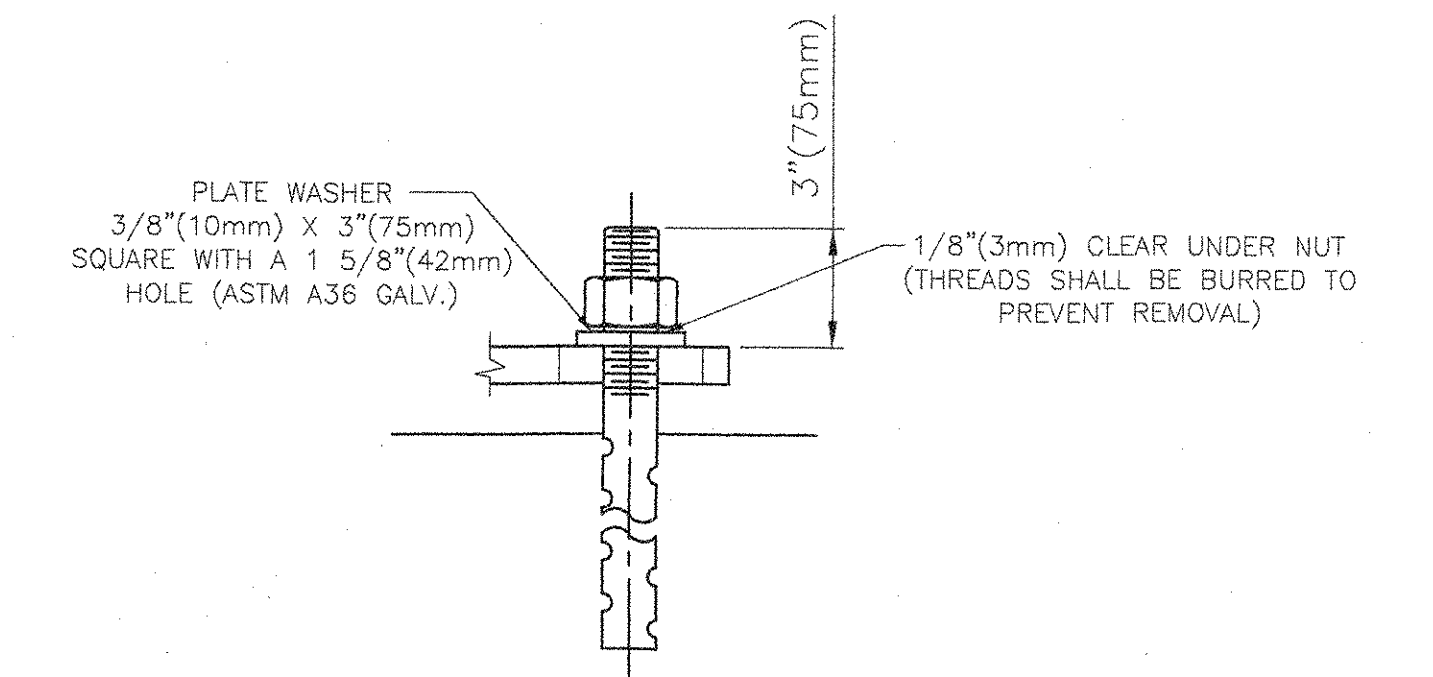
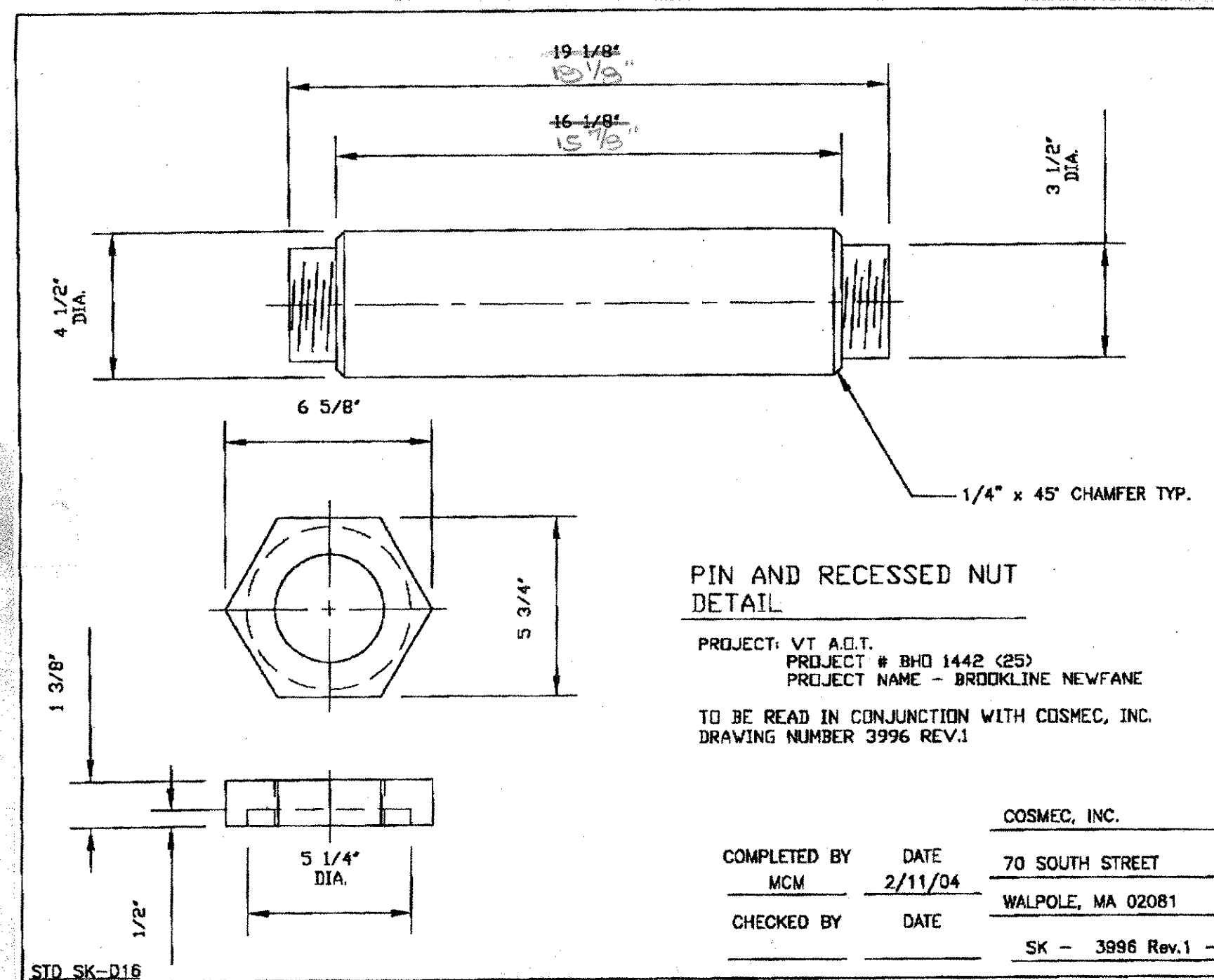


PLAN

EXPANSION FABRIC PAD BEARING
 LOCATION: ABUTMENT 1
 QUANTITY: 2
 ITEM #531:10 (TRUSS) Δ
 DESIGN VERTICAL LOAD—200 KIPS(890kN)
 DESIGN HORIZONTAL LOAD—20 KIPS(89kN)

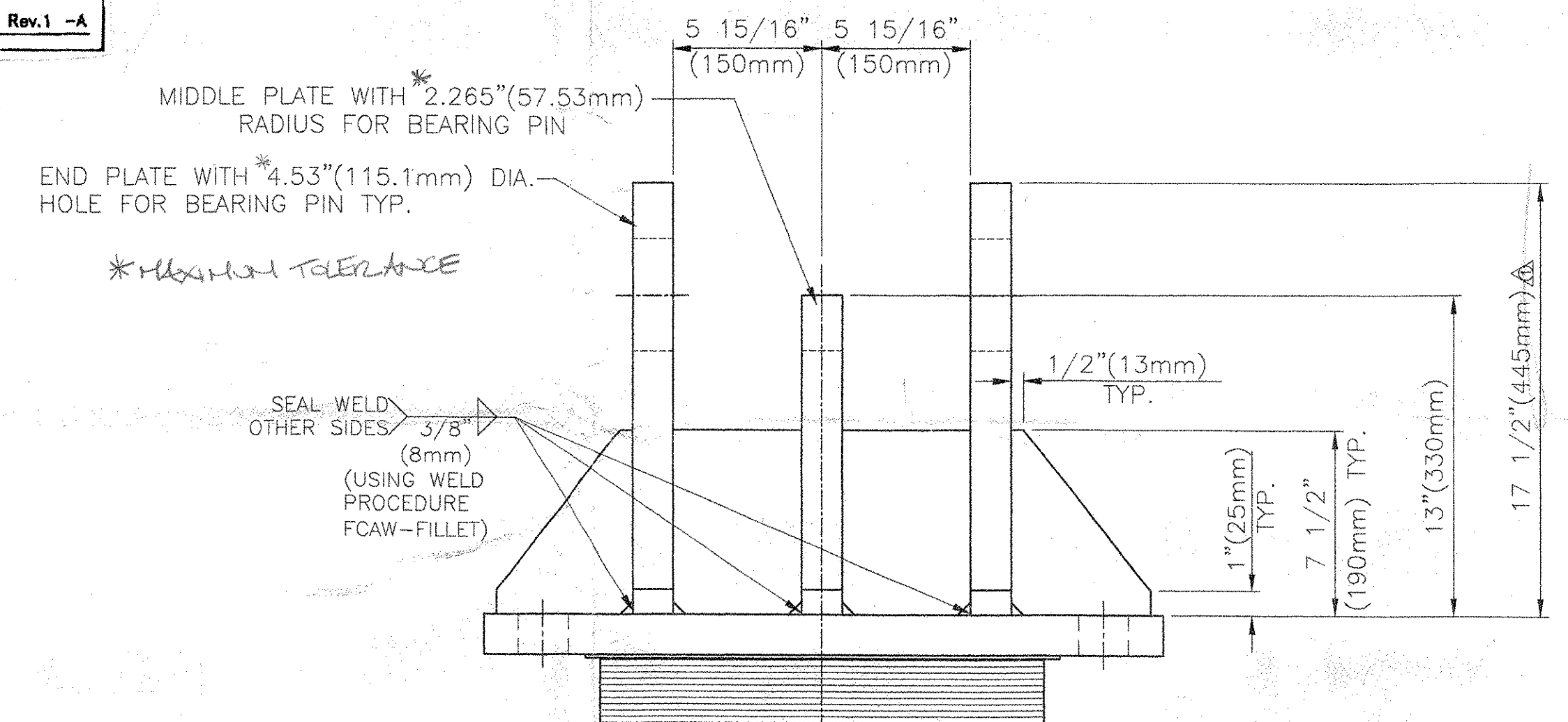


SIDE ELEVATION

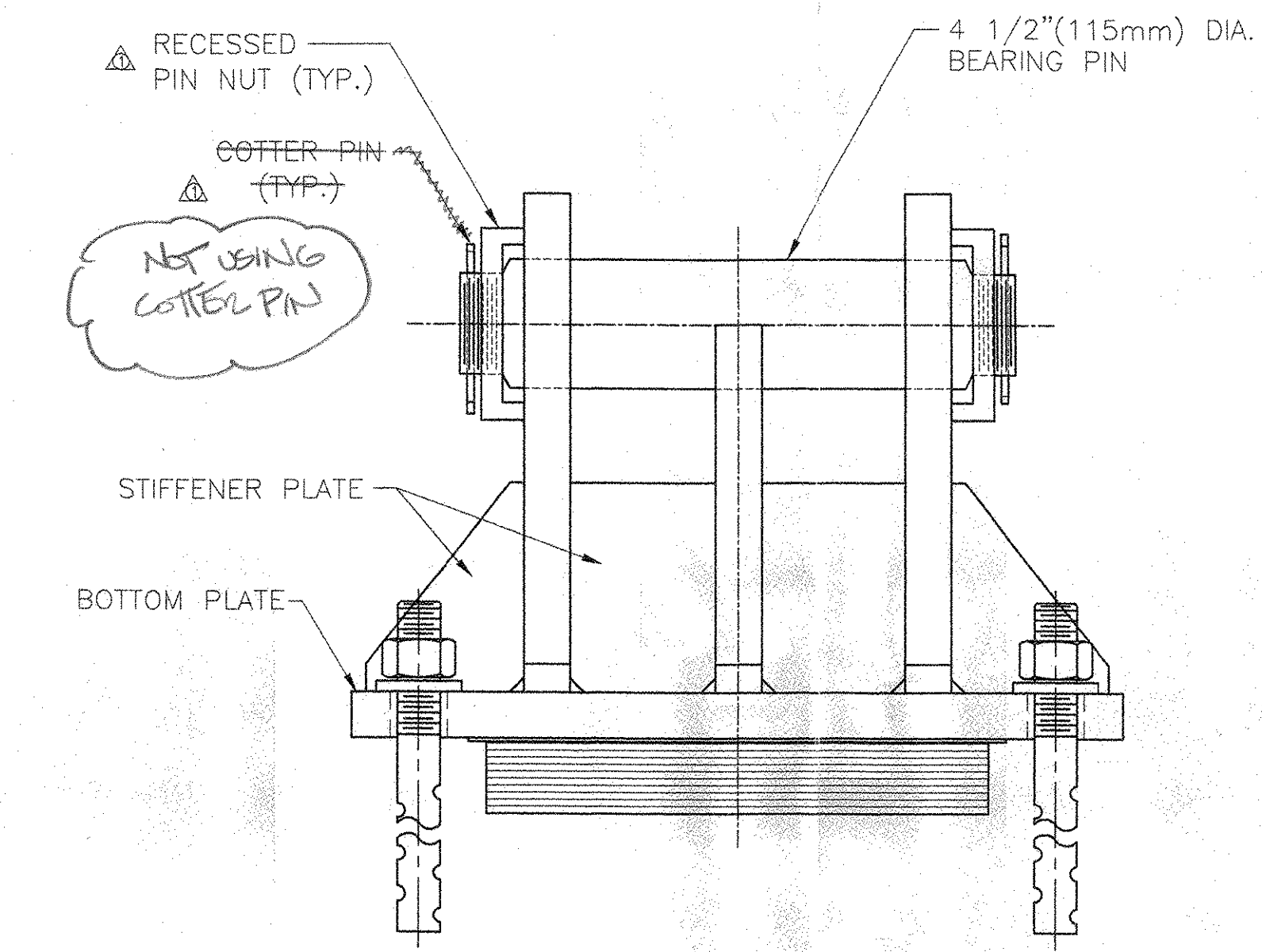


ANCHOR BOLT DETAIL

1 1/2" (38mm) X 24" (610mm) LONG ASTM A449 TYPE 1 Δ
 ANCHOR BOLT W/ 4" (100mm) OF THREAD AND REMAINDER SWEDGED ONE HEAVY HEX NUT AND PLATE WASHER. (ALL GALVANIZED)



FRONT ELEVATION
 SHOWN WITHOUT PIN FOR CLARITY



FRONT ELEVATION

BEARING NOTES

- ALL MATERIALS USED IN THE FABRICATION OF THESE BEARINGS SHALL BE MADE IN THE U.S.A.
- BEARINGS ARE TO BE SHIPPED AS COMPLETE UNITS, STEEL BANNED, AND SHALL BE WRAPPED TO PROTECT FROM MOISTURE AND DIRT DURING TRANSPORT AND STORAGE.
- LOCATION OF FABRICATION PLANT - 70 SOUTH STREET WALPOLE, MA 02081
- COSMEC, INC. REPRESENTATIVE - MR. MATT McANDREWS (508) 368-6600
- BEARINGS SHALL BE STORED IN A CLEAN, DRY, LEVEL UPRIGHT POSITION.

MATERIALS

STEEL - ASTM A709 GR. 50 (AASHTO M270) PAINTED WITH A 3 COAT PAINT SYSTEM (PAINT SUPPLIED BY CUSTOMER) *or metalized*
 STAINLESS STEEL - ASTM A240 TYPE 304; (20 RMS) FINISH Δ
 PREFORMED FABRIC PAD - AASHTO DIV. II SPEC. 18.4.10.1 & STANDARD SPECIFICATIONS FOR CONSTRUCTION SECTION 731.6
 PTFE - (UNFILLED) AASHTO 14.6.2 (DIVISION I) & AASHTO 18.4.3 (DIVISION II) Δ
 ANCHOR BOLTS, NUTS & WASHERS - SEE DETAIL
 PIN - ASTM A688 CLASS F

NOT-STRUCTURES RECEIVED
 CK'D BY [Signature] CK'D BY [Signature]
 2-12-04
 JAN 26 2004
 RESUBMIT APPROVED AS NOTED
 BY [Signature] DATE 2/17/04

STATE OF VERMONT
 AGENCY OF TRANSPORTATION
 PROJECT NAME: BROOKLINE NEWFANE
 PROJECT NUMBER: BHO 1442 (25)

COSMEC, INC. 70 SOUTH STREET WALPOLE, MA. 02081

SCALE: 3/16"=1" DRAWN BY: RFC CHECK BY: NH
 DATE: 11-20-03 DATE: 12-10-03

COSMEC PREFORMED FABRIC PAD BEARINGS
 CUSTOMER: RENAUD BROS. INC. S.O. NUMBER: 59931 DRAWING NUMBER: 3996 REV. 1

REV.	MATERIALS, NOTES, & BEARING PIN	BY	DATE	CK'D	DATE
1		RFC	1/20/04		

STRUCTURES COPY