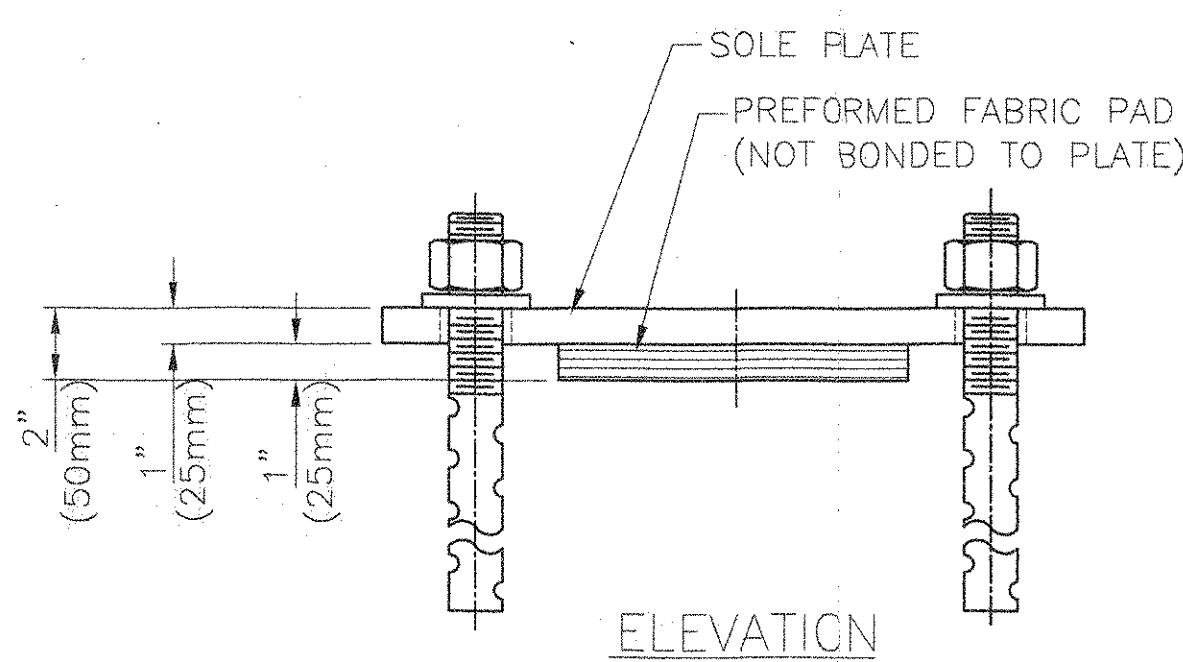
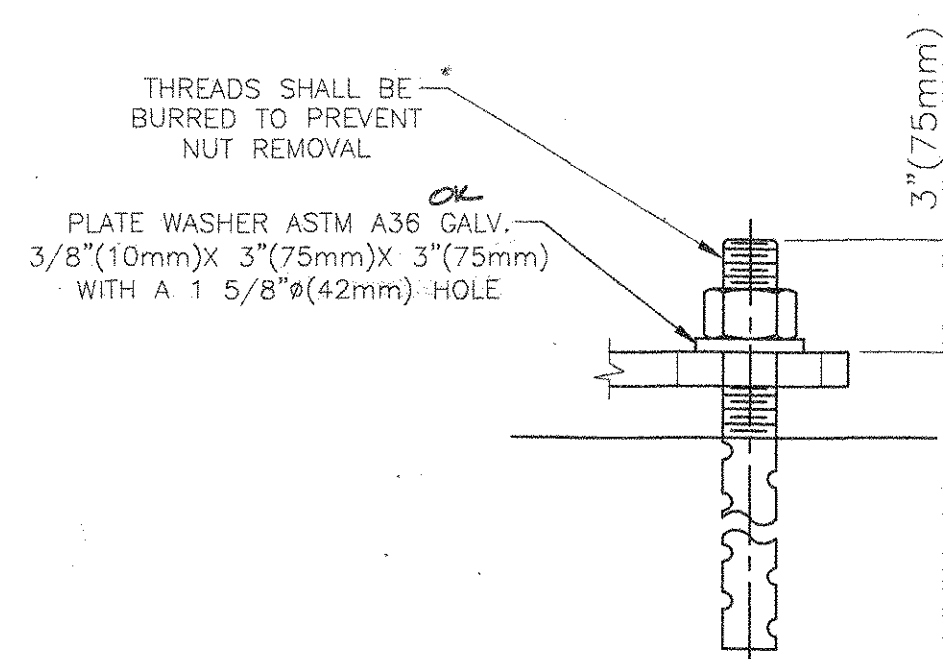


PLAN
 FIXED FABRIC PAD BEARING
 LOCATION: PER
 QUANTITY: 1
 ITEM #531.10 (P&I)
 DESIGN VERTICAL LOAD-106 KIPS(470kN)
 DESIGN HORIZONTAL LOAD-10.6 KIPS(47kN)



ELEVATION



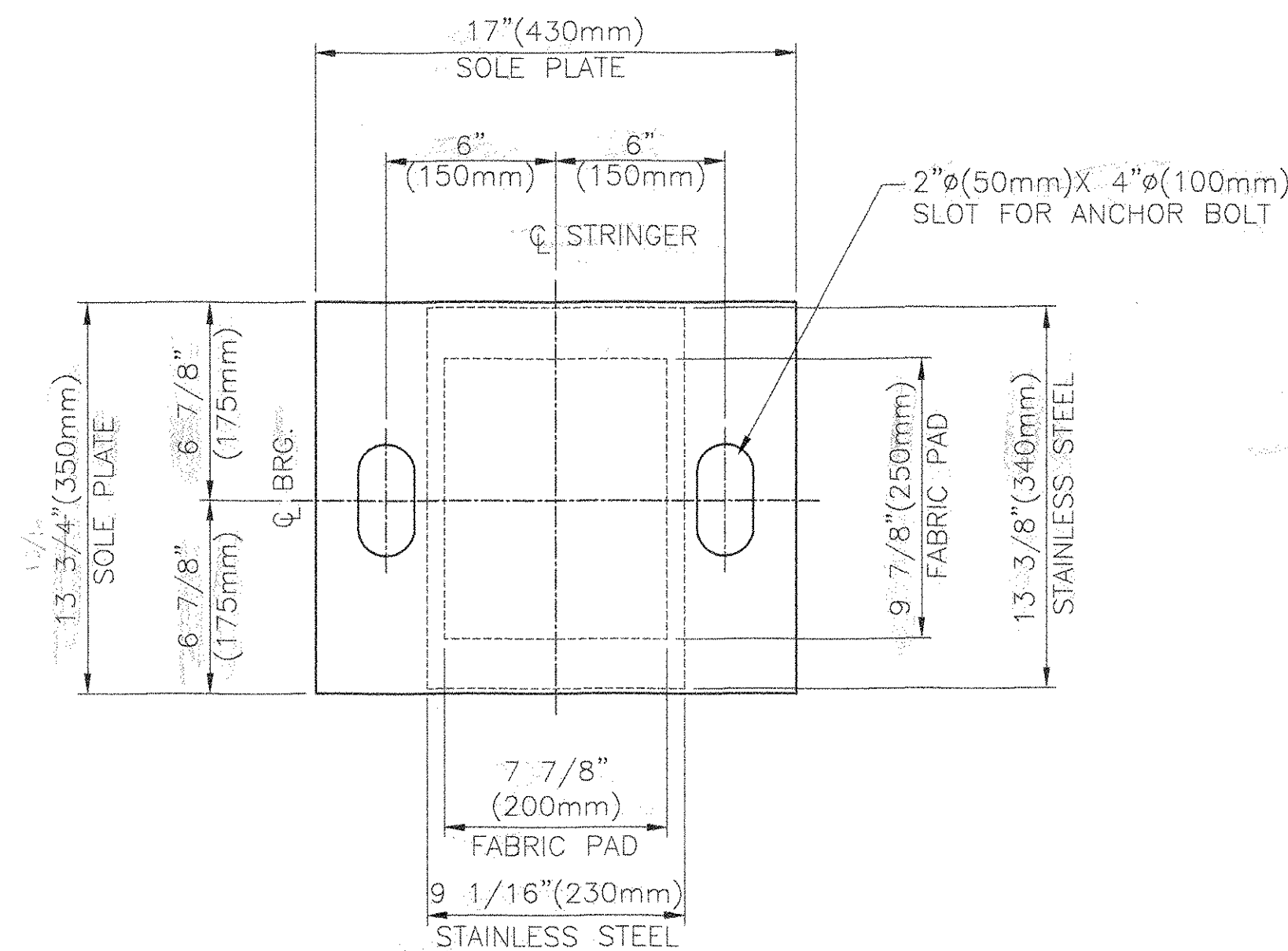
ANCHOR BOLT DETAIL AT FIXED BEARING
 1 1/2" (38mm) X 21 1/4" (540mm) LONG ASTM A449 TYPE I
 ANCHOR BOLT W/ 4" (100mm) OF THREAD AND REMAINDER
 SWEDGED ONE HEAVY HEX NUT AND PLATE WASHER.
 (ALL GALVANIZED)

BEARING NOTES

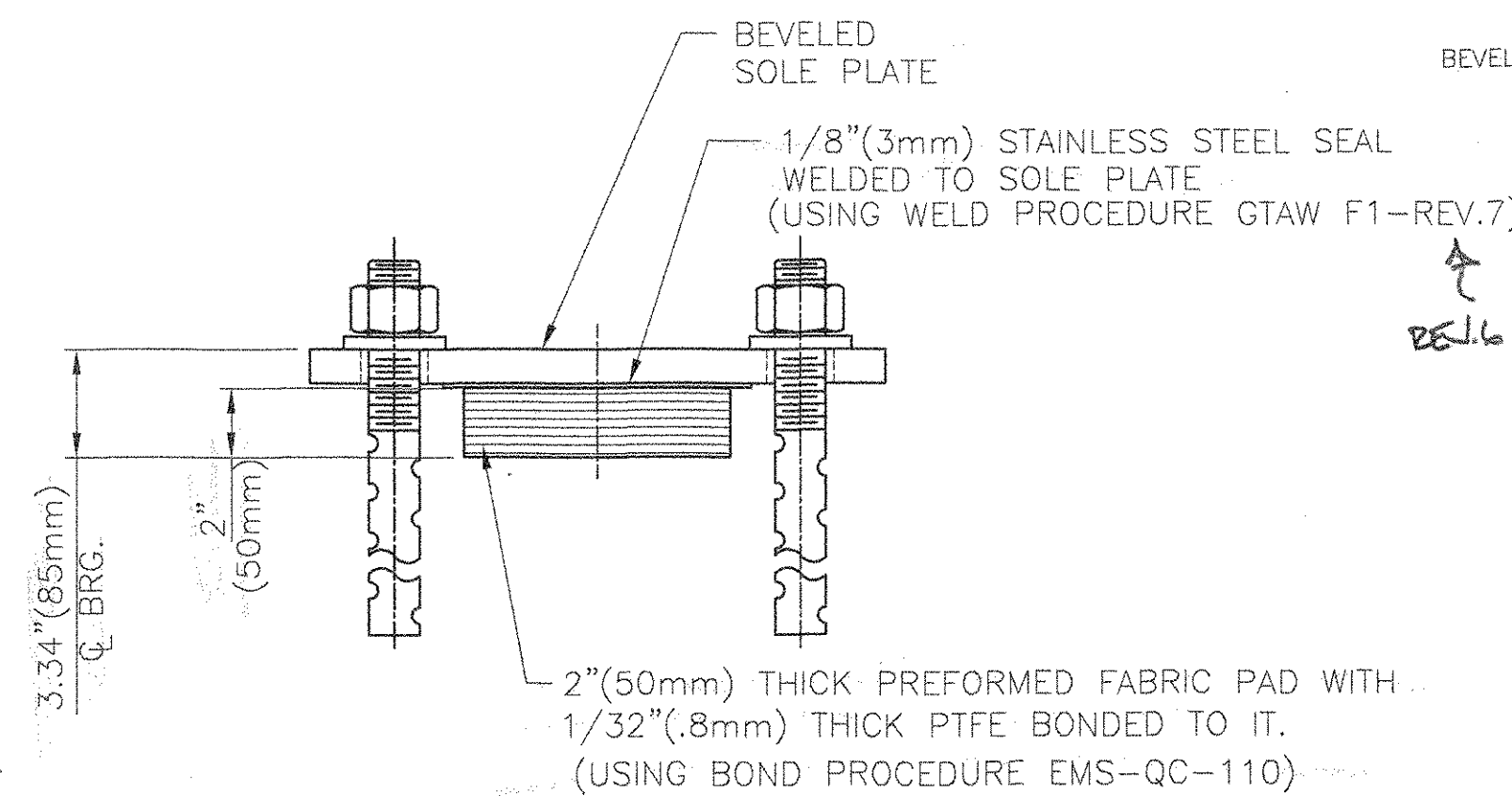
- ALL MATERIALS USED IN THE FABRICATION OF THESE BEARINGS SHALL BE MADE IN THE U.S.A.
- BEARINGS ARE TO BE SHIPPED AS COMPLETE UNITS, STEEL BANDED, AND SHALL BE WRAPPED TO PROTECT FROM MOISTURE AND DIRT DURING TRANSIT AND STORAGE.
- LOCATION OF FABRICATION PLANT - 70 SOUTH STREET, WALPOLE, MA. 02081
- COSMEC, INC. REPRESENTATIVE - MR. MATT McANDREWS (508) 668-6600
- BEARINGS SHALL BE STORED IN A CLEAN, DRY, LEVEL UPRIGHT POSITION.
- ⊙ MARKS THE THICK END OF SOLE PLATE

MATERIALS

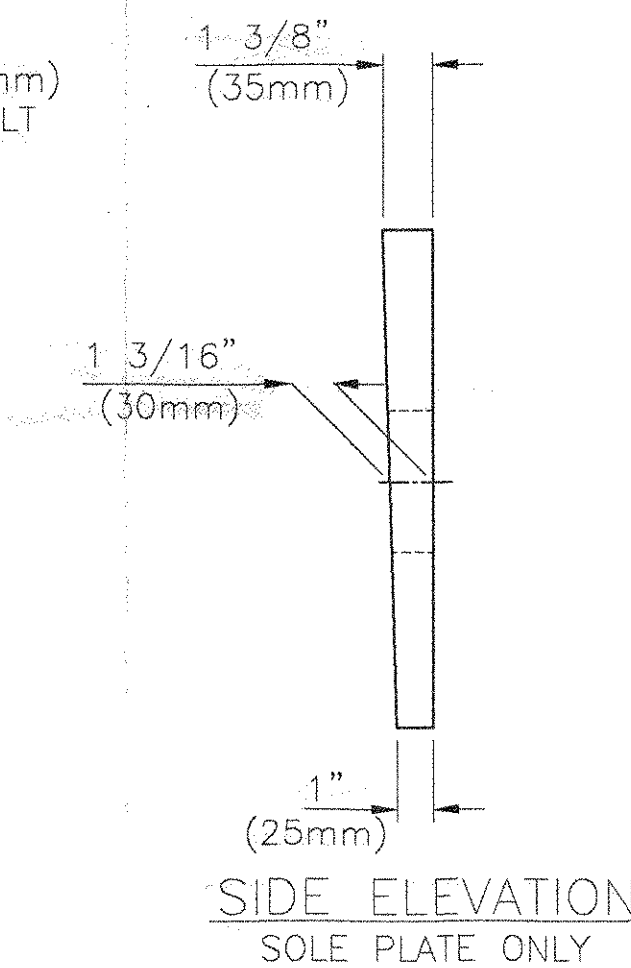
STEEL - ASTM A709 GR. 50 (AASHTO M270) ZINC METALIZED AND SEALED WITH AN APPROVED SEALANT.
 STAINLESS STEEL - ASTM A240 TYPE 304, (20 RMS) FINISH
 PREFORMED FABRIC PAD - AASHTO DIV. II SPEC. 18.4.10.1 AND STANDARD SPECIFICATIONS FOR CONSTRUCTION SECTION 731
 PTFE - ~~ASTM D1130~~ (UNFILLED) AS PER AASHTO 14.6.2 (DIVISION I) AND AASHTO 18.4.3 (DIVISION II)
 ANCHOR BOLTS, NUTS & WASHERS - SEE DETAIL
 ALL BEARINGS DEVICES SHALL BE METALIZED AS PER SUBSECTIONS 531.04(b) AND 506.154(b). BEARINGS SHALL BE SEALED WITH AN APPROVED SEALER AS SPECIFIED IN STANDARD SPEC. SUBSECTION 506.15(b). AREAS OF METALIZING DAMAGED BY FIELD WELDING OR HANDLING SHALL BE PAINTED WITH AN APPROVED SEALANT IN ACCORDANCE WITH STANDARD SPEC. SUBSECTION 513.
 ALL CORNERS & EDGES OF STEEL PLATES, SHAPES SHALL BE GROUND TO 1/16" (1.6mm) RADIUS.



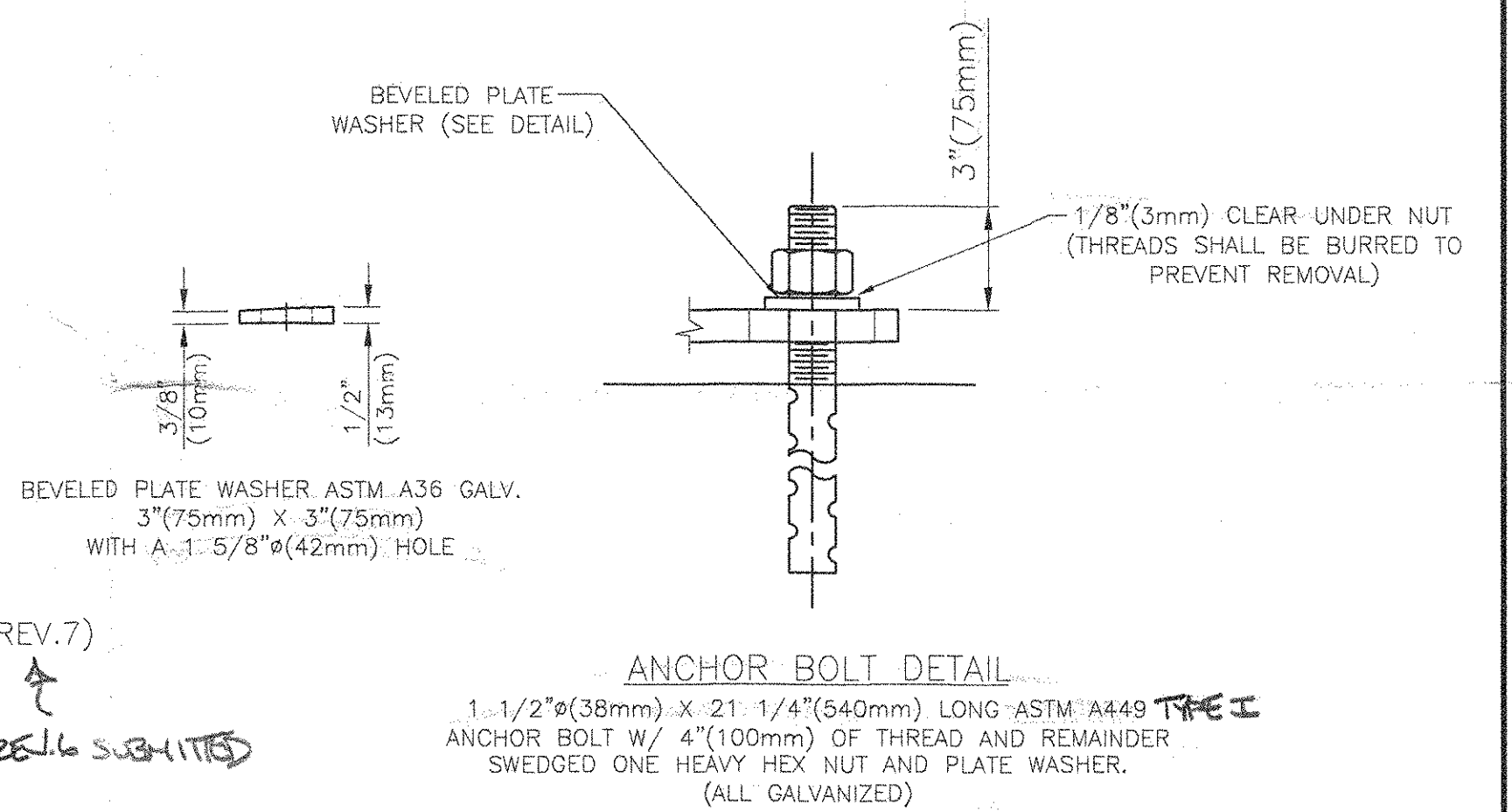
PLAN
 EXPANSION FABRIC PAD BEARING
 LOCATION: ABUTMENT 2
 QUANTITY: 4
 ITEM #531.10 (P&I)
 DESIGN VERTICAL LOAD-74 KIPS(330kN)
 DESIGN HORIZONTAL LOAD-7.4 KIPS(33kN)



ELEVATION



SIDE ELEVATION
 SOLE PLATE ONLY



ANCHOR BOLT DETAIL
 1 1/2" (38mm) X 21 1/4" (540mm) LONG ASTM A449 TYPE I
 ANCHOR BOLT W/ 4" (100mm) OF THREAD AND REMAINDER
 SWEDGED ONE HEAVY HEX NUT AND PLATE WASHER.
 (ALL GALVANIZED)

~ STRUCTURES COPY ~
 NOTE: TO BE DISTRIBUTED UPON RECEIPT OF RESUBMITTED AND APPROVED DWG. NO. 3996 - SEE MEMO IN FILE DATE 1-5-04

NOT-STRUCTURES RECEIVED
 OK'D BY: [Signature] 12-24-03
 DEC 22 2003
 RESUBMIT APPROVED [Signature]
 BY 3/7/04 DATE 1-5-04

STATE OF VERMONT
 AGENCY OF TRANSPORTATION
 PROJECT NAME: BROOKLINE NEWFANE
 PROJECT NUMBER: BHO 1442 (25)

COSMEC, INC. 70 SOUTH STREET WALPOLE, MA. 02081

SCALE: 3/16"=1"	DRAWN BY: RFC	CHECK BY: NH
	DATE: 11-20-03	DATE: 12-10-03

COSMEC PREFORMED FABRIC PAD BEARINGS			
CUSTOMER: RENAUD BROS. INC.	S.O. NUMBER: 59931	DRAWING NUMBER: 3995	REV.

REV.	BY	DATE	OK'D	DATE
------	----	------	------	------