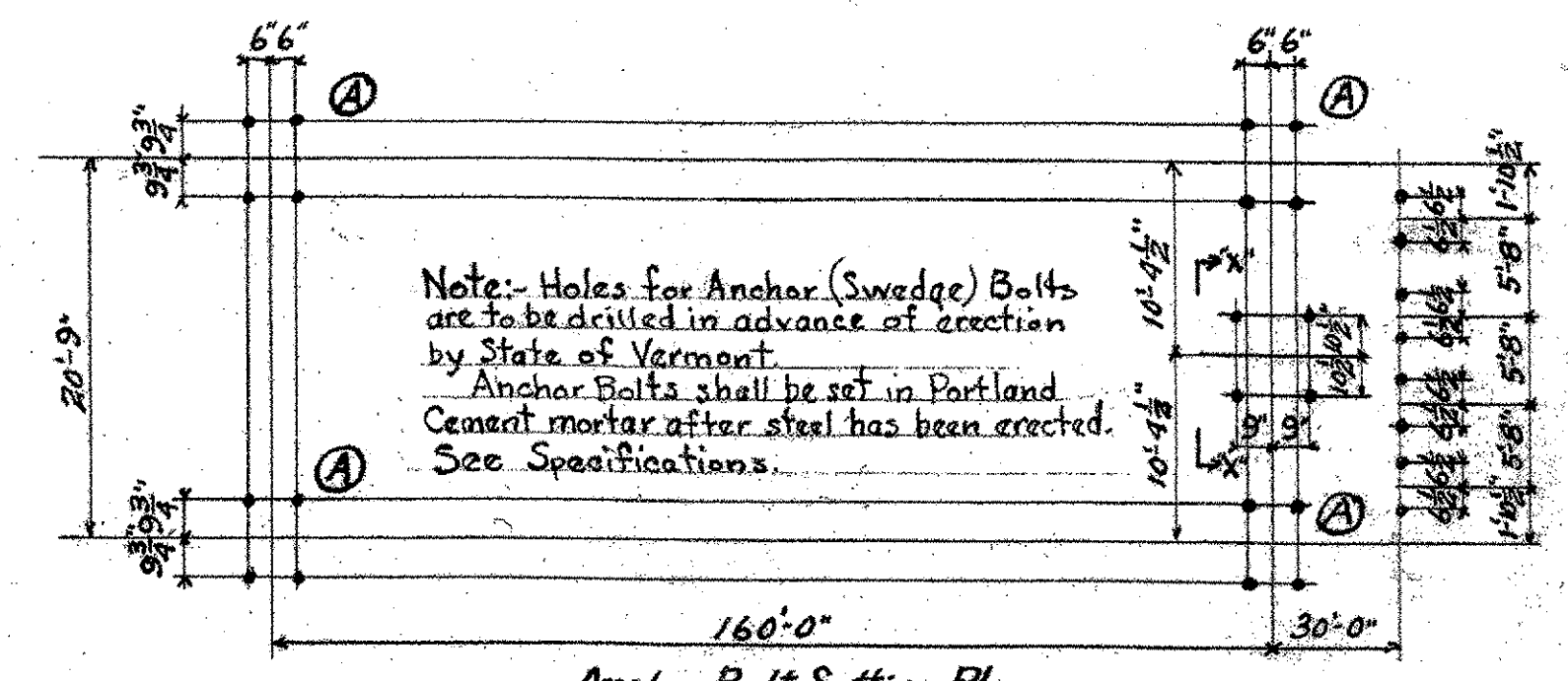
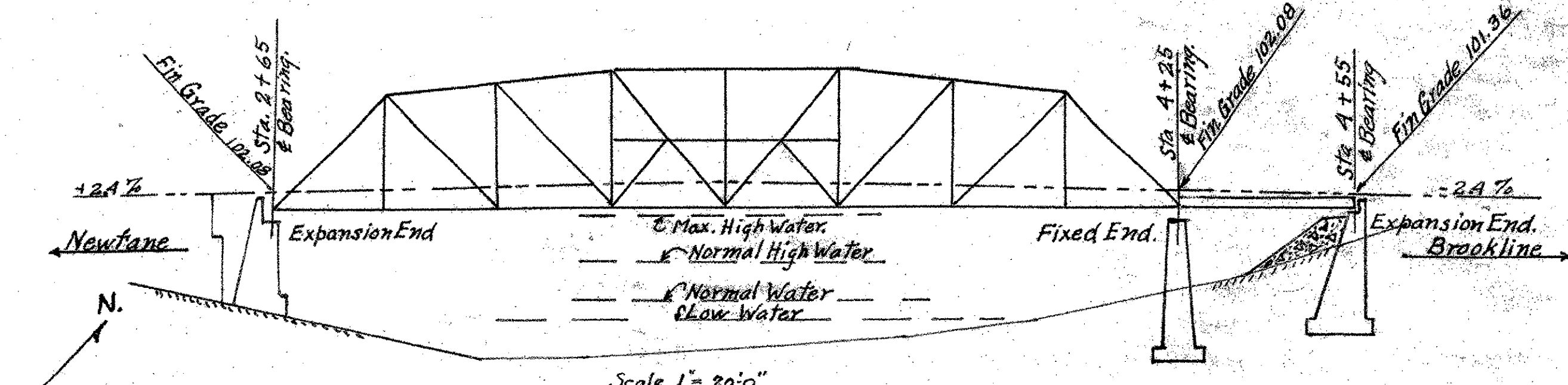


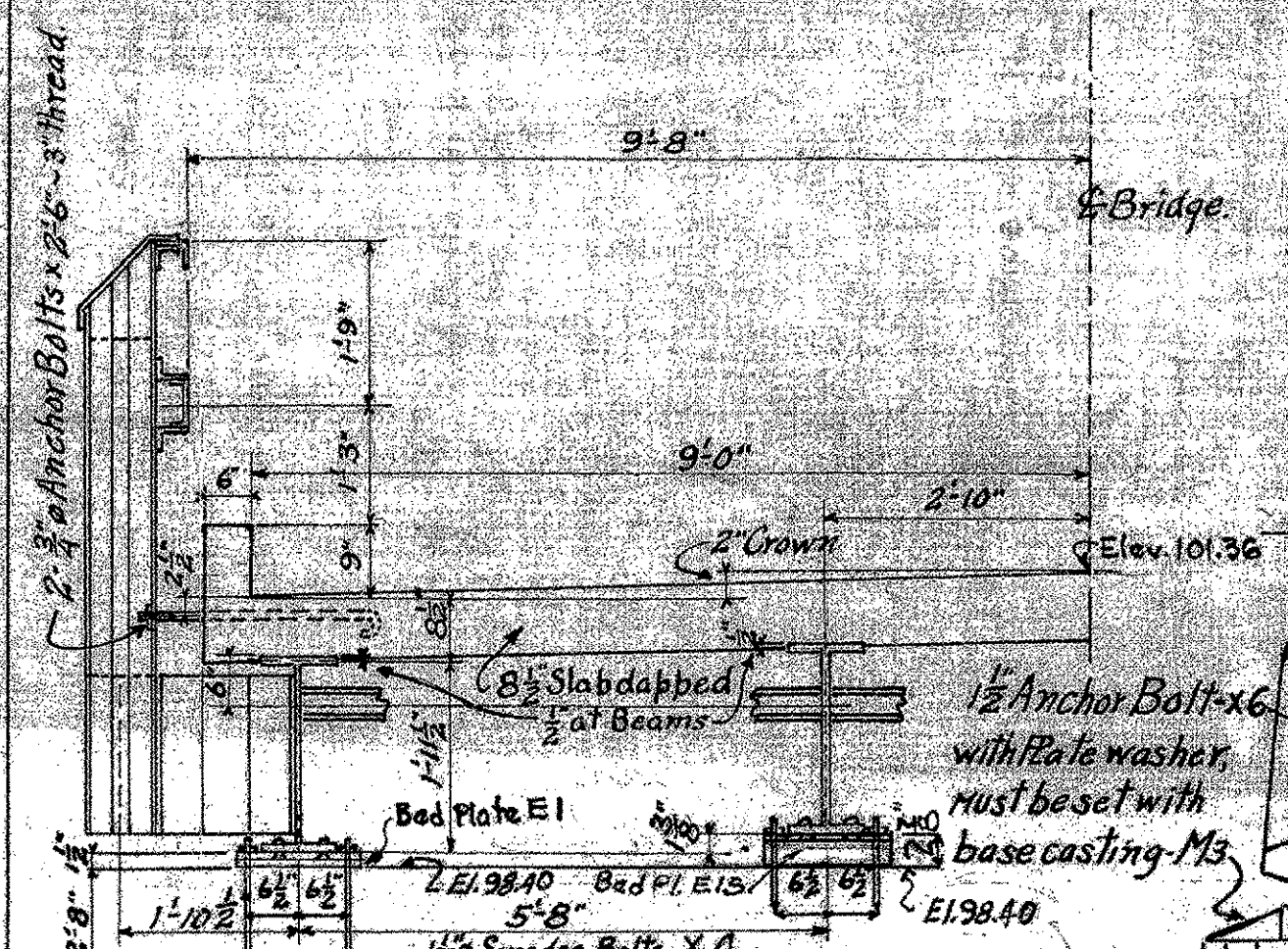
Half Section at A-A+BB



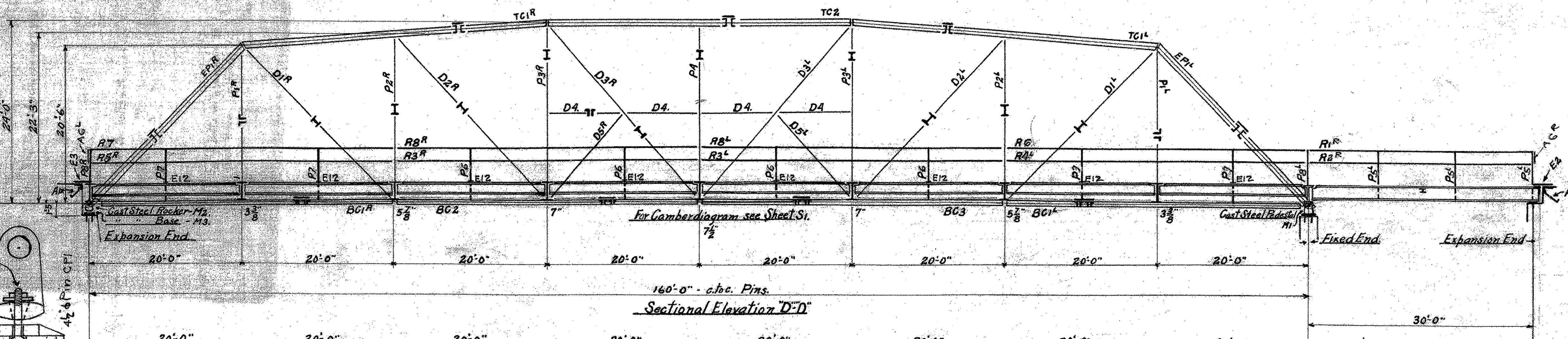
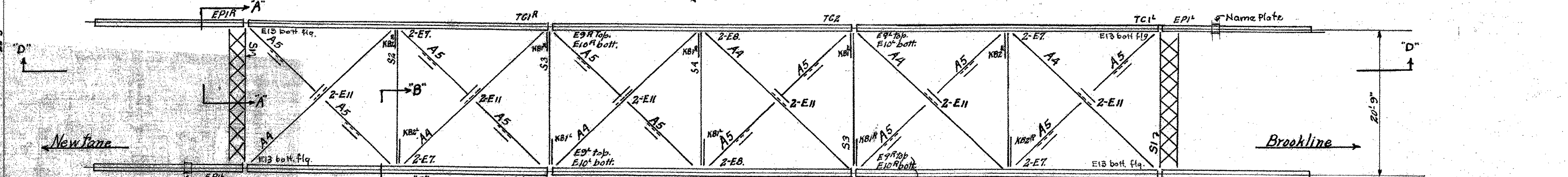
Anchor Bolt Setting Plan



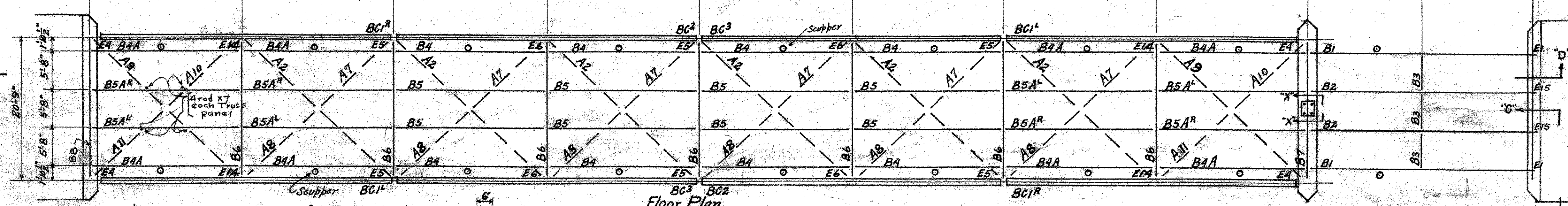
Plan of Top Chord



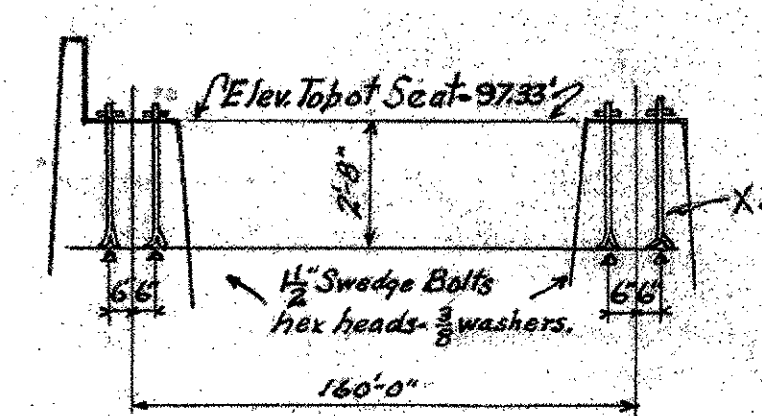
Half Section at C-C Approach Span



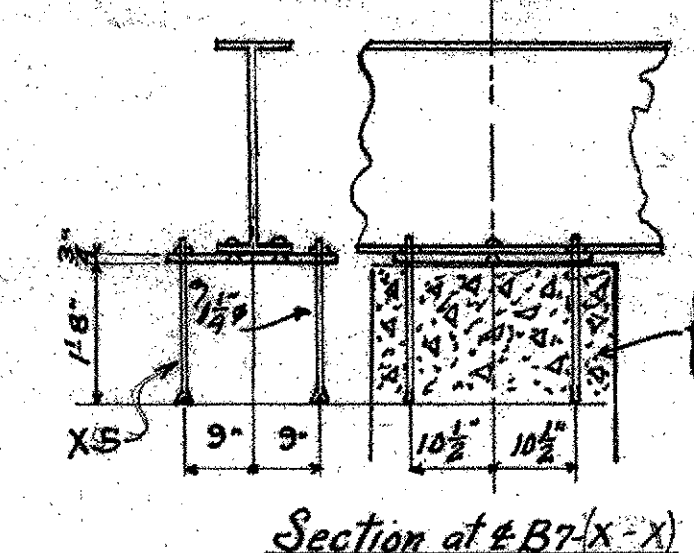
Sectional Elevation D-D



Floor Plan

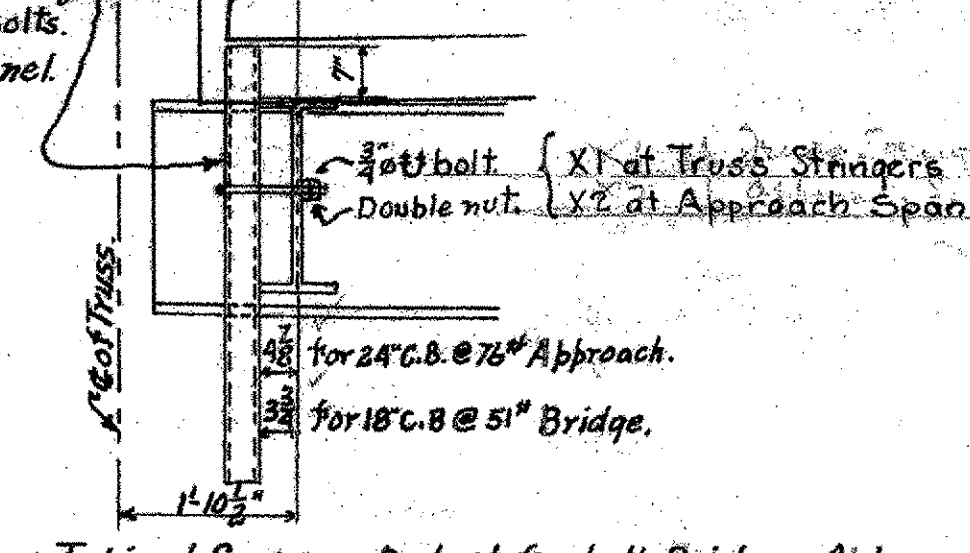


Detail of Swedge Bolts for Bridge Seat (A)



Section at B7 (X-X)

Concrete Pedestal to be poured after erection of steel.



Typical Scupper Detail for both Bridge + Approach

4" Galv. Iron Pipe + 4" x 4" long supported with 4" x 4" post bolts to stringer. One per Panel. 18 required.

REFERENCE SHEET 7 OF 11  
SHEET 74 OF 78

Erector to apply field paint in accordance with Specification. See copy with papers

Rivets:		THE BERLIN CONSTRUCTION COMPANY, INC.
Holes:		
Field Connections:	Riveted	DRAWN BY: E.W.S. DATE: 3/14/28
Shop Paint:	One Coat - B.M. Suddam Red Lead	CHECKED BY: [Signature] DATE: 3/16/28
Field Paint:	1st Coat - B.M. Suddam Red Lead 60 Gallons ordered ship direct 2nd Coat - B.M. Suddam Black Graphite 60 Gallons ordered ship direct Revised 5-26-28	SCALE: _____
		CONTRACT No. 7839
		SHEET NO. 1 OF 5 SHEETS