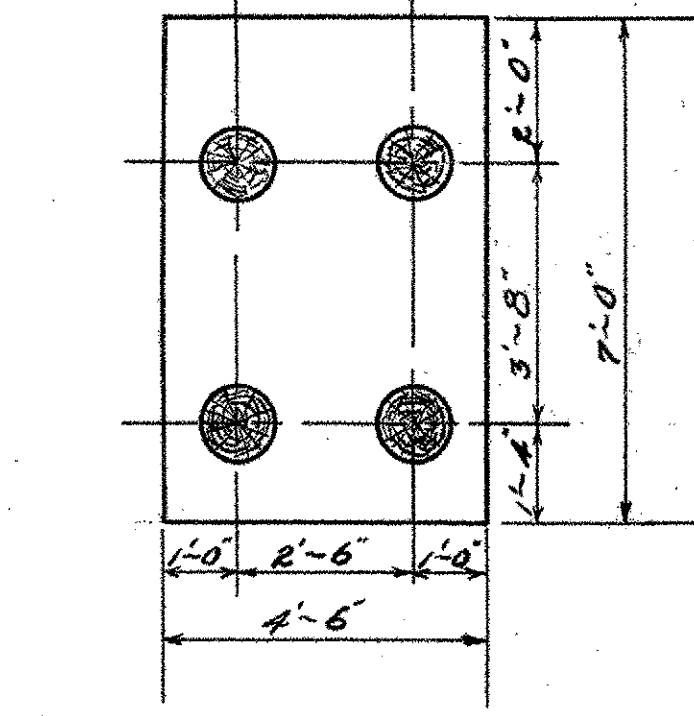


REINFORCING BAR SCHEDULE	
No. 1 BAR (OMITTED)	
No. 2 Bar - 1" Round	10 Reqd Total length 11'-5"
No. 3 Bar - 1" Round	7 Reqd Total length 20'-9"
No. 4 Bar - 1" Round	6 Reqd Total length 13'-0"
No. 5 Dowel - 1" Round	4 Reqd Total length 5'-0"
No. 6 BAR - 1" Round	8 Reqd Total length 4'-0"
No. 7 + 8 - 5/8" Round	4 Reqd Total length 27'-6" (2.08 in.)
No. 9 stirrup - 3/8" Round	18 Reqd Total length 14'-0"
No. 10 Bar - 1" Round	4 Reqd Total length 19'-0"
No. 11 Bar - 1" Round	2 Reqd Total length 30'-3"
No. 12 Bar - 1" Round	8 Reqd Total length 5'-6"
No. 13 Bar - 1" Round	2 Reqd Total length 29'-9"
No. 14 Bar - 1" Round	2 Reqd Total length 6'-3"
No. 15 Bar - 3/8" Round	4 Reqd Total length 8'-0"
No. 16 Dowel - 1" Round	4 Reqd Total length 4'-3"
No. 17 Bar - 3/8" Round	2 Reqd Total length 24'-0"
No. 18 3/8" Construction Rebar	5 Reqd Total length 2'-0"

PILES: ALL PILES TO BE DRIVEN TO A BEARING CAPACITY OF 15 TONS EACH.



PILES CONSIDERED AS BEING 25' LONG 4" x 6" BARS FOR PURPOSES OF ESTIMATE ONLY.

Furnishing and placing 1/2 precast expansion material to be included in unit price bid for 1-2 1/2-5 concrete.

Concrete Bent Symmetrical about  $\frac{1}{2}$

REFERENCE SHEET 6 OF 11  
SHEET 73 OF 78

ABUTMENT NO. 2 - DETAILS  
**NEWFANE BROOKLINE BRIDGE**  
 OVER  
**WEST RIVER**  
 SCALE  $\frac{3}{8}'' = 1'-0''$

Piling	200 Lin. Ft.
Structure Excavation	40 Cu. Yds
1-2-4 Concrete	11 Cu. Yds
1-2 1/2-5 Concrete	18 Cu. Yds
Reinforcement Steel	2000 Lbs
Rip Rap	76 Cu. Yds

SEE SHEET NO. 6 OF 8 FOR SPECIFICATIONS FOR REINFORCING BARS.

Surveyed by J.E. Helyar  
 Designed by M.L. Woodruff  
 Drawn by Whitcomb  
 Traced by Whitcomb  
 Checked by M.L. Woodruff 7/14/24  
 Series 21 No. 2-7-21 Filed  
 Sheet 8 of 8 Sheets