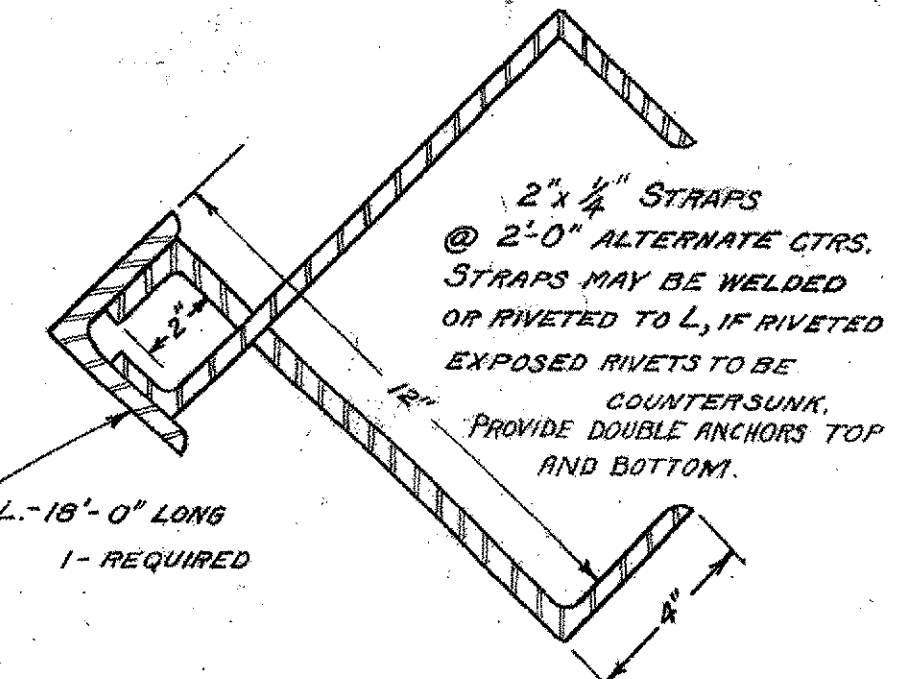
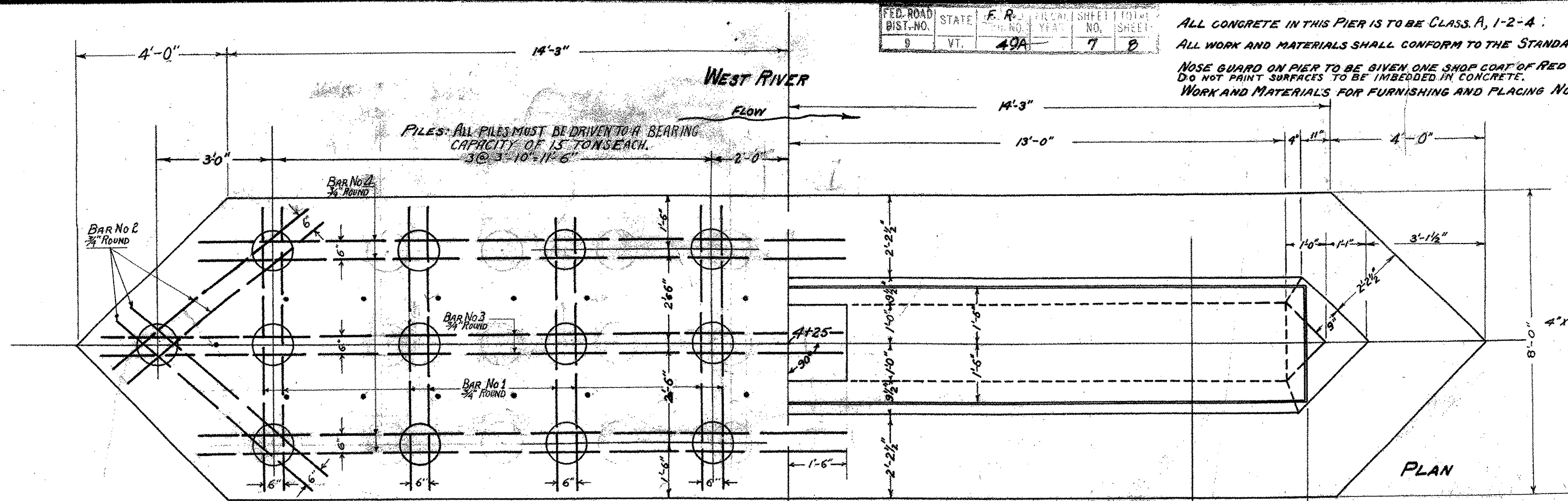


ALL CONCRETE IN THIS PIER IS TO BE CLASS A, 1-2-4.
 ALL WORK AND MATERIALS SHALL CONFORM TO THE STANDARD SPECIFICATIONS (ROAD AND BRIDGE) OF THE VERMONT DEPT. OF HIGHWAYS 1926.
 NOSE GUARD ON PIER TO BE GIVEN ONE SHOP COAT OF RED LEAD AND OIL, ONE FIELD COAT OF RED LEAD AND OIL AND ONE FIELD COAT OF GRAPHITE PAINT.
 DO NOT PAINT SURFACES TO BE IMBEDDED IN CONCRETE.
 WORK AND MATERIALS FOR FURNISHING AND PLACING NOSE GUARD TO BE PAID FOR UNDER UNIT PRICE BID FOR REINFORCING STEEL.



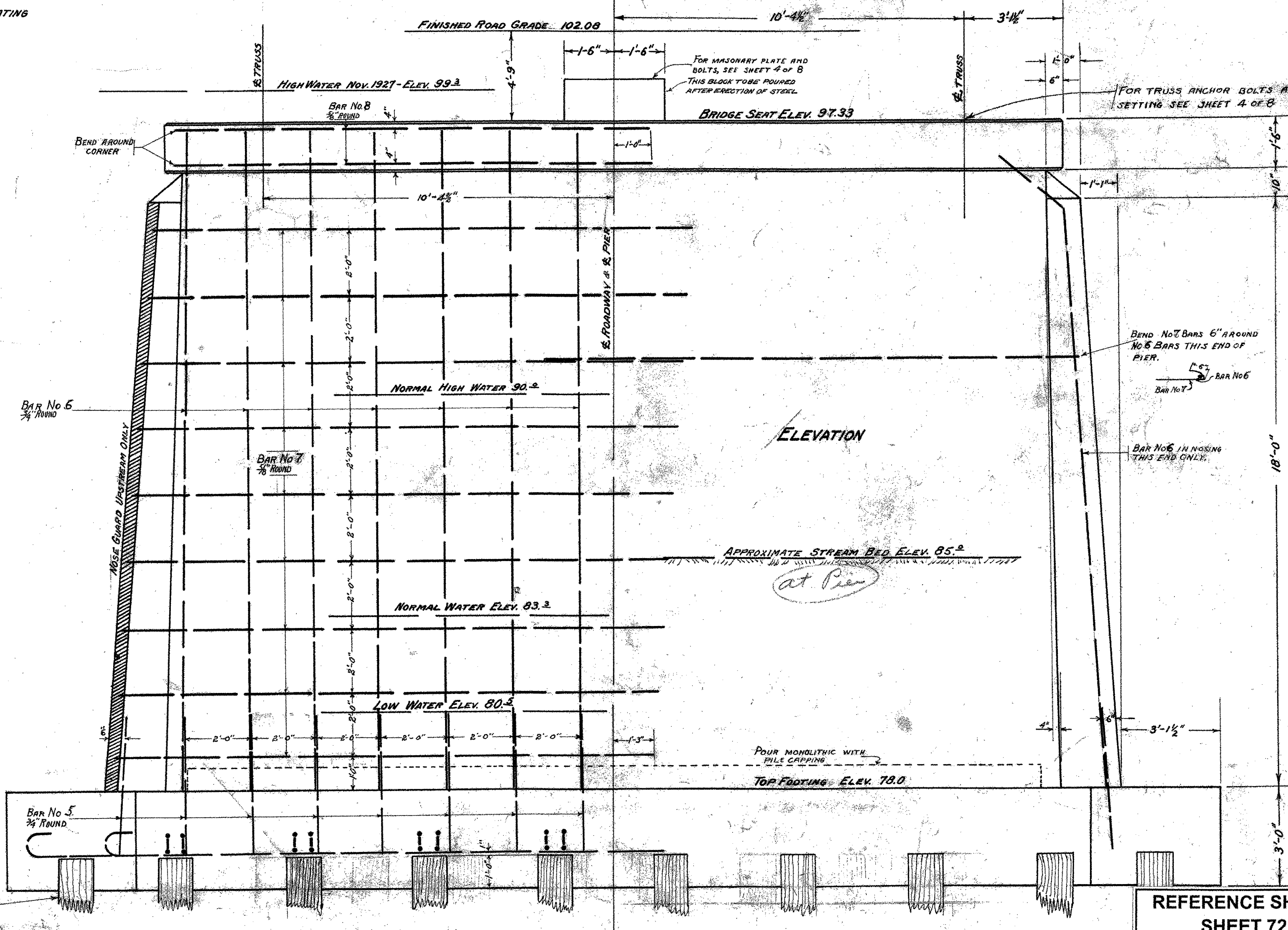
DETAIL NOSE ANGLE

ALL EXPOSED EDGES OF PIER CAP SHALL BE CHAMFERED WHICH DIMENSION SHALL BE THE TOTAL LENGTH ACROSS THE FINISHED CHAMFER.

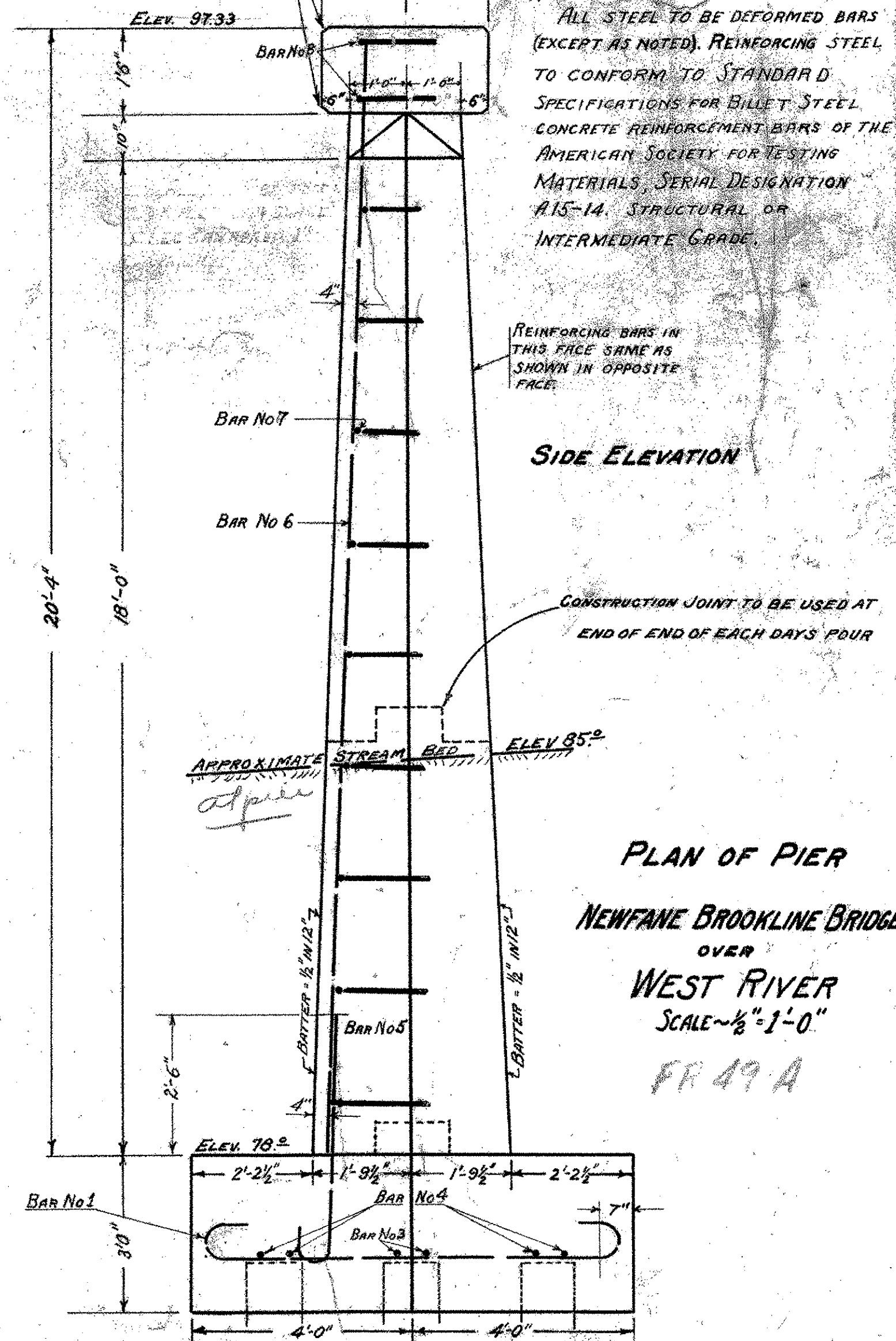
REINFORCING STEEL DETAILS

BAR NO.	NO. REQ'D.	SIZE	LGTH	DETAIL
1	16	3/4" RND.	9'-6"	
2	8	3/4" RND.	8'-9"	
3	4	3/4" RND.	8'-6"	
4	8	3/4" RND.	17'-8"	
5	30	3/4" RND.	5'-6"	
6	29	3/4" RND.	19'-0"	STRAIGHT
7	36	3/4" RND.	17'-0"	STRAIGHT
8	8	3/4" RND.	15'-3"	

25'-0" PILES FOR ESTIMATING PURPOSES ONLY.



ELEVATION



SIDE ELEVATION

PLAN OF PIER
 NEWFANE BROOKLINE BRIDGE
 OVER
 WEST RIVER
 SCALE - 1/8" = 1'-0"

STRUCTURE EXCAVATION = 1750 CU. YDS.
 WOODEN PILES = 650 LIN. FT.
 1-2-4 CONCRETE = 87 CU. YDS.
 NOSE ANGLE = 210 LBS.
 REINFORCING BARS = 2500 LBS.

Surveyed by J. HELYAR
 Designed by RADIGAN
 Drawn by RADIGAN AND LARSEN
 Traced by LARSEN
 Checked by M. L. Woodruff 2/6/25
 Series 21 No. 2-7-21 Filed
 Sheet 7 of 8 Sheets

REFERENCE SHEET 5 OF 11
 SHEET 72 OF 78