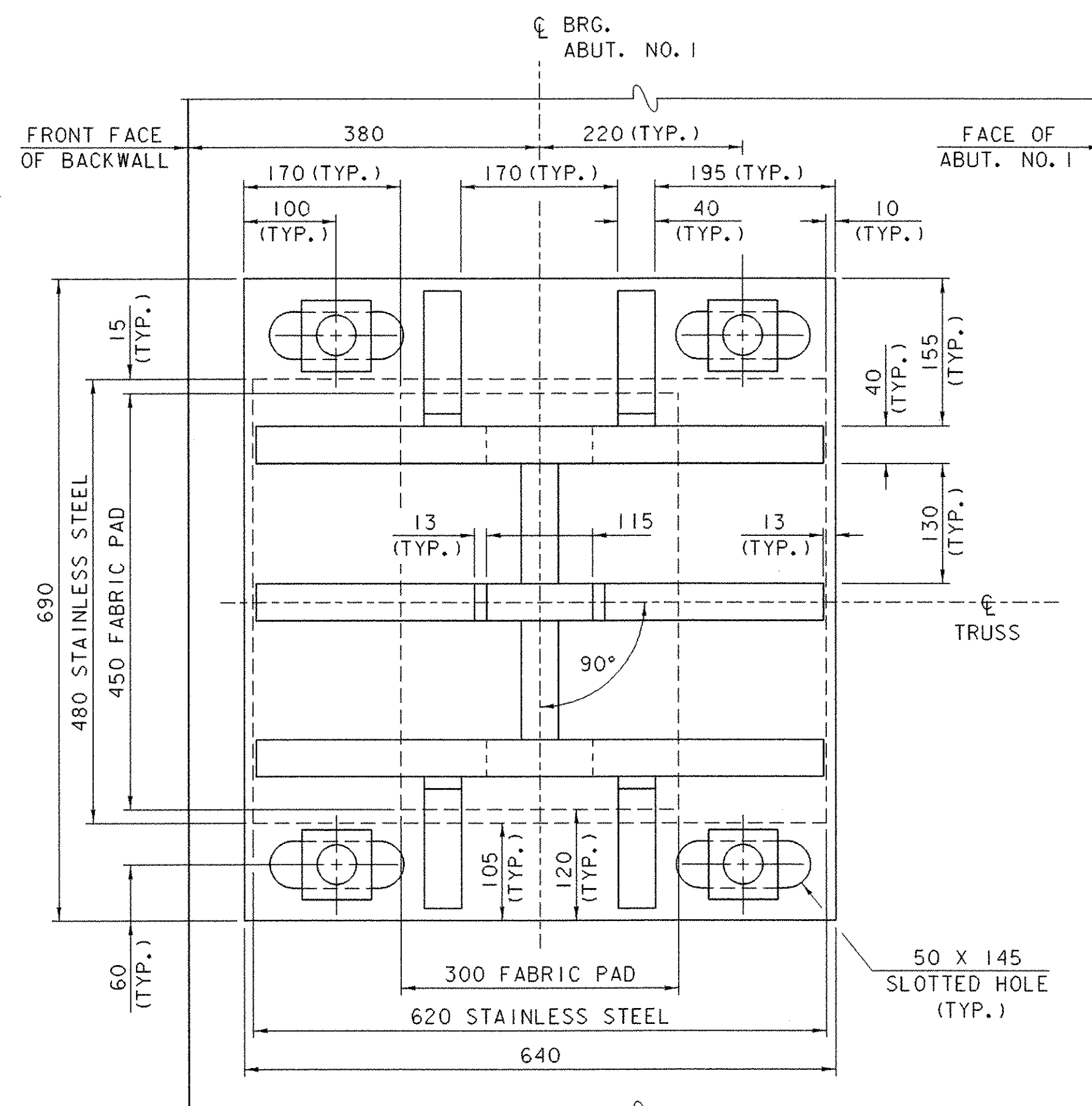
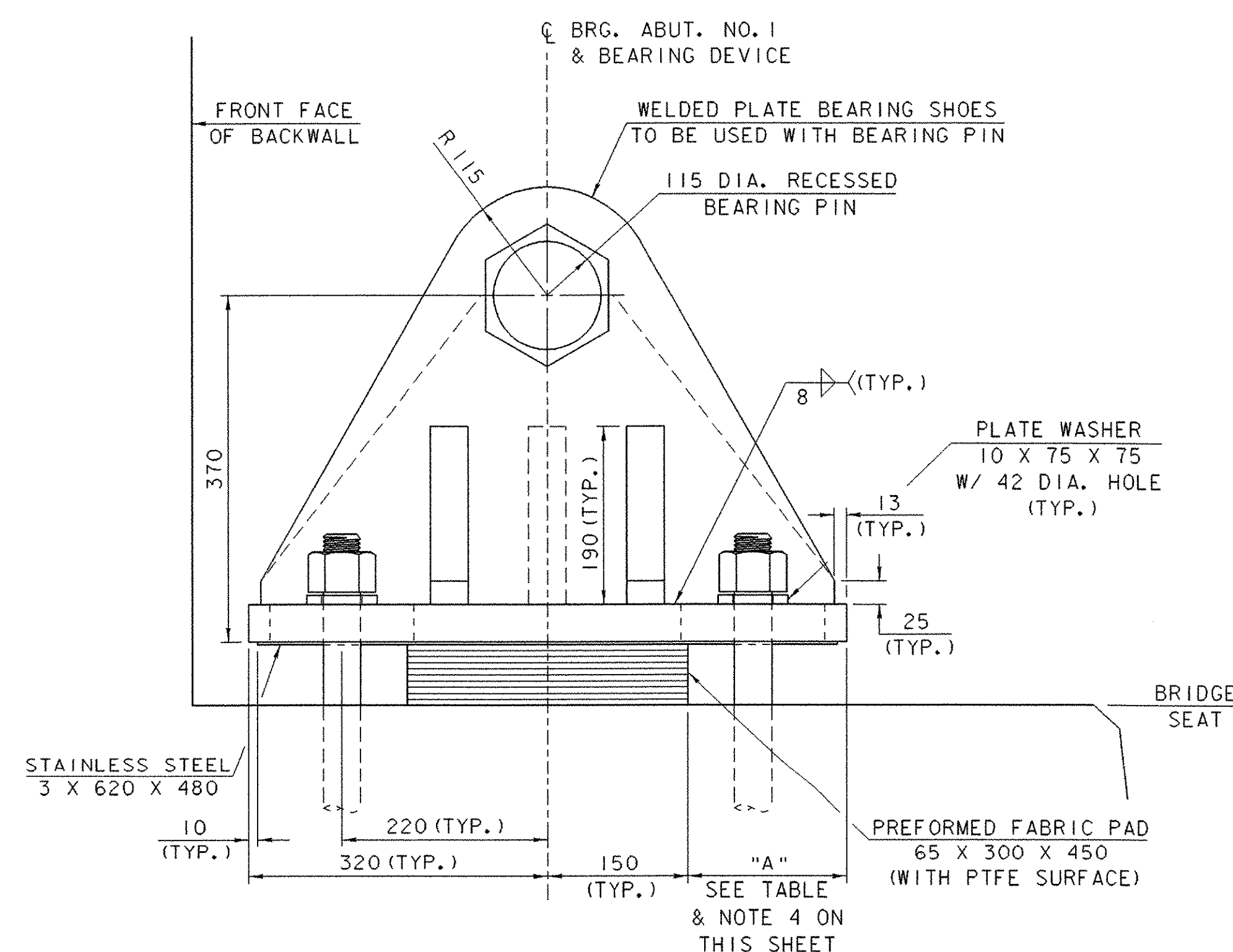
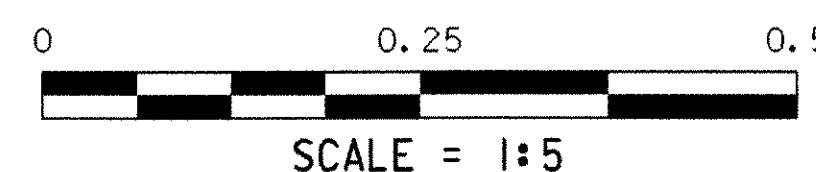


## BEARING NOTES

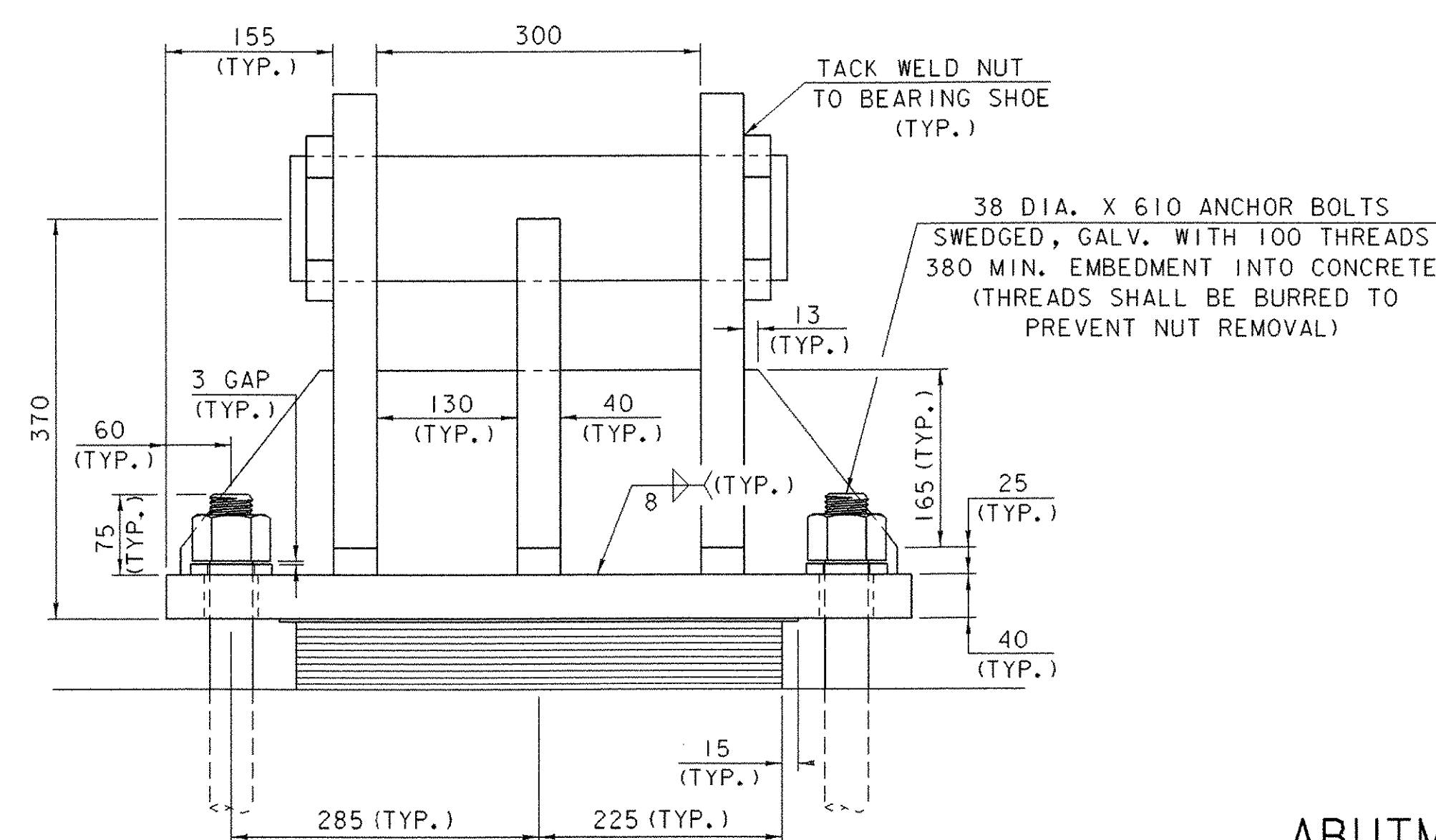
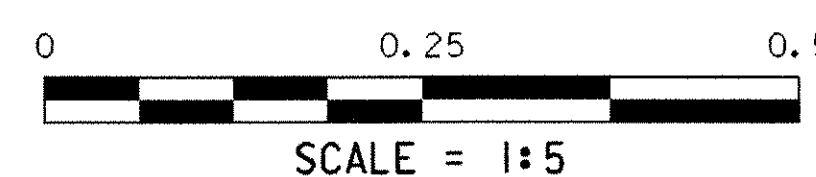
1. BEARINGS SHALL CONFORM TO VAOT STANDARD SPECIFICATIONS FOR CONSTRUCTION SECTION 531, "BEARING DEVICES".
2. NEW BEARINGS AT ABUTMENT NO. 1 SHALL BE PAID FOR UNDER ITEM 531.10, "BEARING DEVICE ASSEMBLY (TRUSS)". NEW BEARINGS AT THE PIER AND ABUTMENT NO. 2 SHALL BE PAID FOR UNDER ITEM 531.10, "BEARING DEVICE ASSEMBLY (PAD)".
3. DESIGN CRITERIA:
  - A. MAXIMUM ALLOWABLE BEARING ON CONCRETE OR MASONRY: 7 MPa
  - B. MINIMUM ALLOWABLE DESIGN ROTATION: 0.015 radians
  - C. DESIGN VERTICAL LOAD (DEAD + LIVE + IMPACT):
    - ABUTMENT NO. 1: 890 KN
    - PIER (PAD): 470 KN
    - ABUTMENT NO. 2: 330 KN
  - D. DESIGN HORIZONTAL LOAD: MINIMUM 10% OF VERTICAL LOAD
4. AT ABUTMENT NO. 1, THE "A" DISTANCE IS THE FINAL SETTING FOR THE BEARING PAD WHEN THE DEAD LOAD OF THE NEW CONCRETE DECK IS IN PLACE.
5. AT ABUTMENT NO. 2, THE "B" DISTANCE IS THE FINAL SETTING FOR THE BEARING PAD AFTER THE CONCRETE DECK, CURB, AND BRIDGE RAIL HAVE BEEN PLACED. THE "A" DISTANCE IS FOR SETTING THE BEARING AFTER THE STRUCTURAL STEEL IS ERECTED AND BEFORE THE CONCRETE DECK IS POURED. THE DIFFERENCE IS THE THEORETICAL ELONGATION OF THE BOTTOM FLANGE DUE TO DEAD LOAD DEFLECTION. THE FINAL "B" DISTANCE SHOWN IN THE TABLE MUST BE ATTAINED WITHIN 3 mm.
6. THE CONCRETE SURFACE UNDER NEW BEARING DEVICES SHALL BE LEVEL.
7. ALL NEW STEEL IN BEARING DEVICES, EXCEPT PINS AND STAINLESS STEEL, SHALL CONFORM TO AASHTO M270/M 270M, GRADE 345. STEEL FOR NEW PINS SHALL CONFORM TO AASHTO M102/M 102M, GRADE 345 CLASS F. STAINLESS STEEL SHALL CONFORM TO SUBSECTION 731.05 OF THE STANDARD SPECIFICATIONS.
8. THE SURFACE FINISH FOR NEW PINS AND PIN CONTACT SURFACES ON NEW BEARING SHOES SHALL CONFORM TO TABLE 18.5.1.5-1 OF THE AASHTO STANDARD SPECIFICATIONS, DIVISION II.
9. NEW BEARING SHOES AND PINS AT ABUTMENT NO. 1 SHALL BE PAINTED AND GREASED. THIS WORK SHALL CONFORM TO SUPPLEMENTAL SPECIFICATION 513, AND SHALL BE PAID FOR UNDER THE APPLICABLE CONTRACT ITEMS.
10. THE EXISTING CONCRETE PEDESTAL FOR THE CENTER PIER BEARING SHALL BE REMOVED. THIS WORK SHALL BE PAID FOR UNDER ITEM 529.25, "REMOVAL OF CONCRETE OR MASONRY".
11. THE EXISTING BEARING PINS AT THE PIER SHALL BE FREED AND GREASED PRIOR TO RE-SETTING OF THE TRUSS. ALL REMAINING PORTIONS OF EXISTING BEARINGS AT THE PIER SHALL BE CLEANED AND GREASED. THE GREASE COMPOUND SHALL CONFORM TO SUPPLEMENTAL SPECIFICATION 513. THIS WORK SHALL BE PAID SUBSIDIARY TO ITEM 531.10, "BEARING DEVICE ASSEMBLY (TRUSS)".
12. NEW BEARING DEVICES AT THE PIER AND ABUTMENT NO. 2 SHALL BE GALVANIZED OR METALIZED IN CONFORMANCE WITH SUBSECTION 531.04 OF THE STANDARD SPECIFICATIONS. AREAS OF GALVANIZING OR METALIZING DAMAGED BY FIELD WELDING OR HANDLING SHALL BE REPAIRED IN CONFORMANCE WITH SUPPLEMENTAL SPECIFICATION 513.
13. ALL NEW ANCHOR BOLTS, NUTS, AND WASHERS SHALL BE GALVANIZED. ALL WASHERS SHALL BE 10 mm PLATE MINIMUM. ANCHOR BOLTS, NUTS, WASHERS, AND THEIR INSTALLATION SHALL BE INCLUDED IN THE UNIT PRICE BID FOR THEIR RESPECTIVE "BEARING DEVICE ASSEMBLY" ITEM.
14. ADDITIONAL BEARING REPAIRS MAY BE ORDERED AT THE DISCRETION OF THE RESIDENT ENGINEER. ANY REPAIRS NOT SPECIFIED IN THE PLANS SHALL BE PAID FOR AS EXTRA WORK.



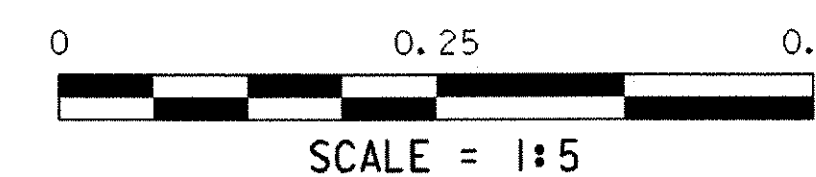
**PLAN**



**SIDE ELEVATION**



**FRONT ELEVATION**



**ABUTMENT NO. 1  
TEMPERATURE SETTING TABLE**

TEMP	"A" DIST.
-25°C	188
-15°C	182
-5°C	176
5°C	170
15°C	164
25°C	158
35°C	152
45°C	146

### ABUTMENT NO. 1 BEARING DETAILS

PROJECT NAME:	BROOKLINE NEWFANE
PROJECT NUMBER:	BHO 1442 (25)
FILE NAME:	95j278\Structures\sj278abd.1
PROJECT MANAGER:	R. WHITCOMB
DESIGNED BY:	M. LOZIER
PLOT DATE:	26-JUN-2003
DRAWN BY:	G. ROY
CHECKED BY:	M. LOZIER
SHEET	34 OF 78