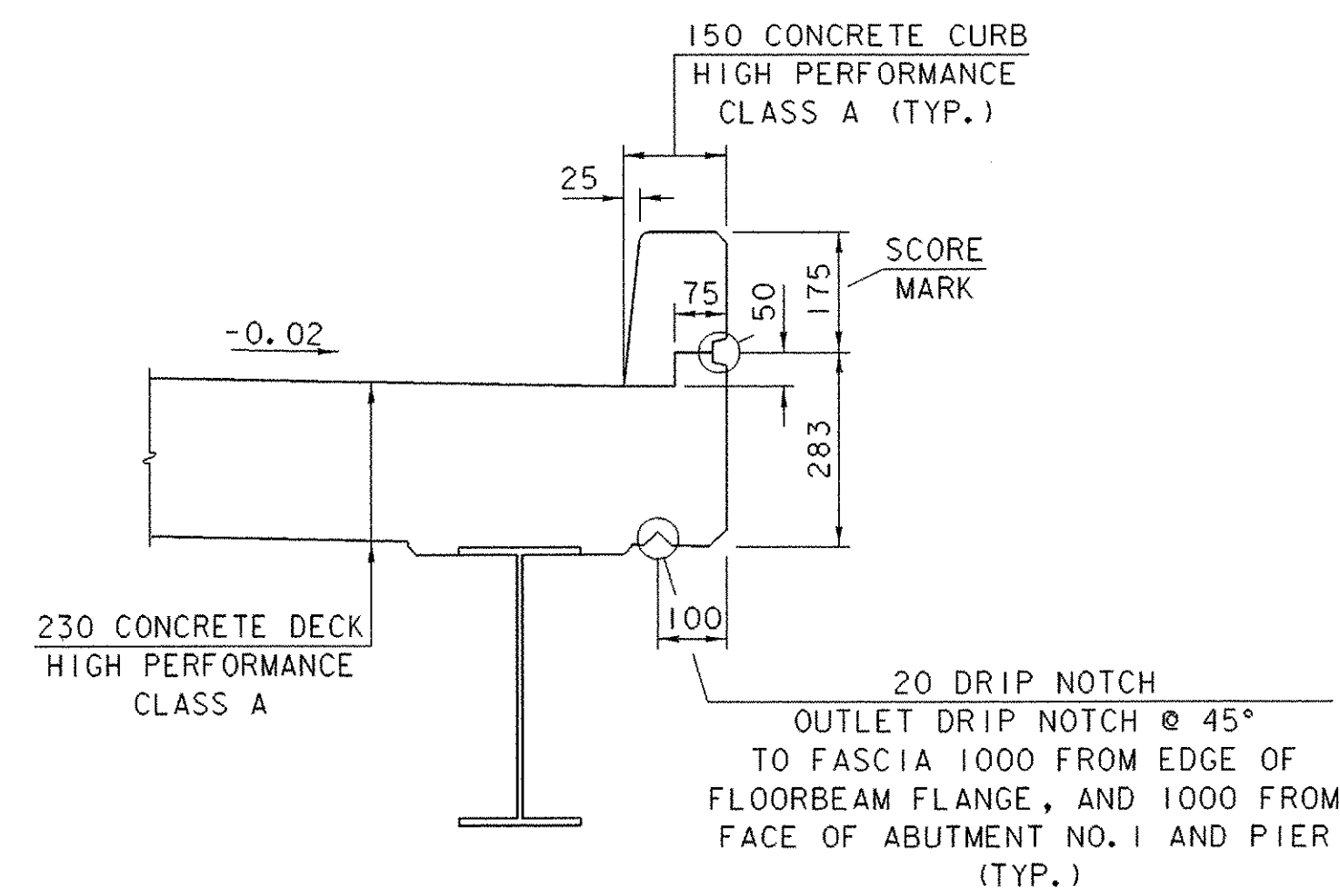
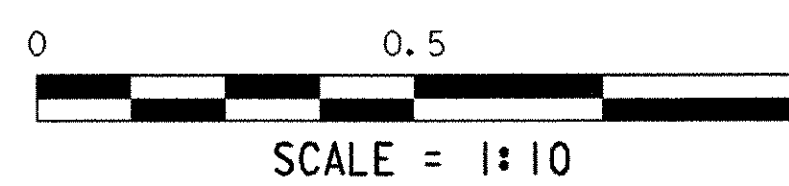
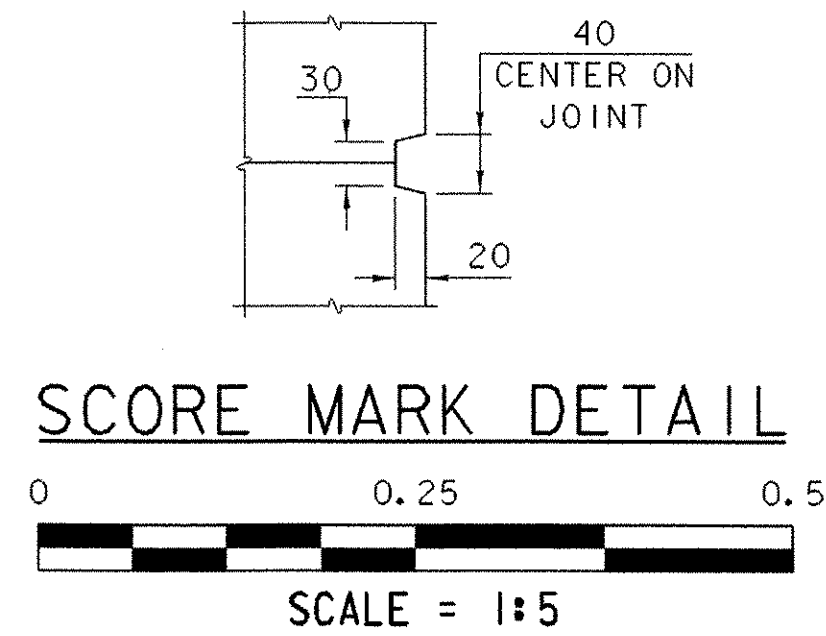
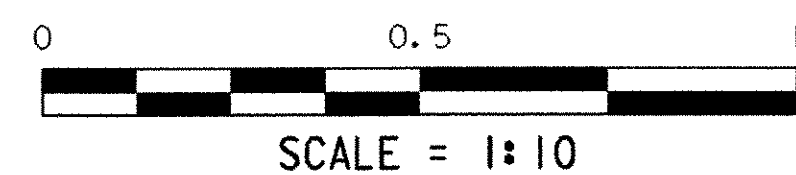


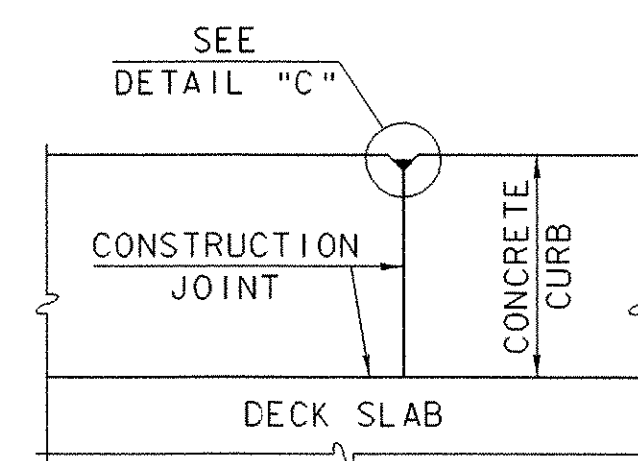
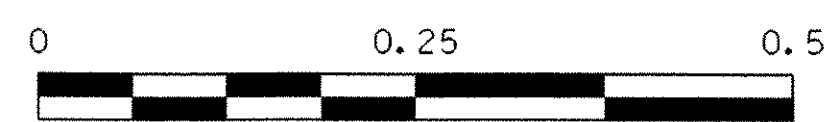
**APPROACH SPAN BRIDGE CURB  
AND RAIL DETAIL**



**TRUSS SPAN BRIDGE CURB**

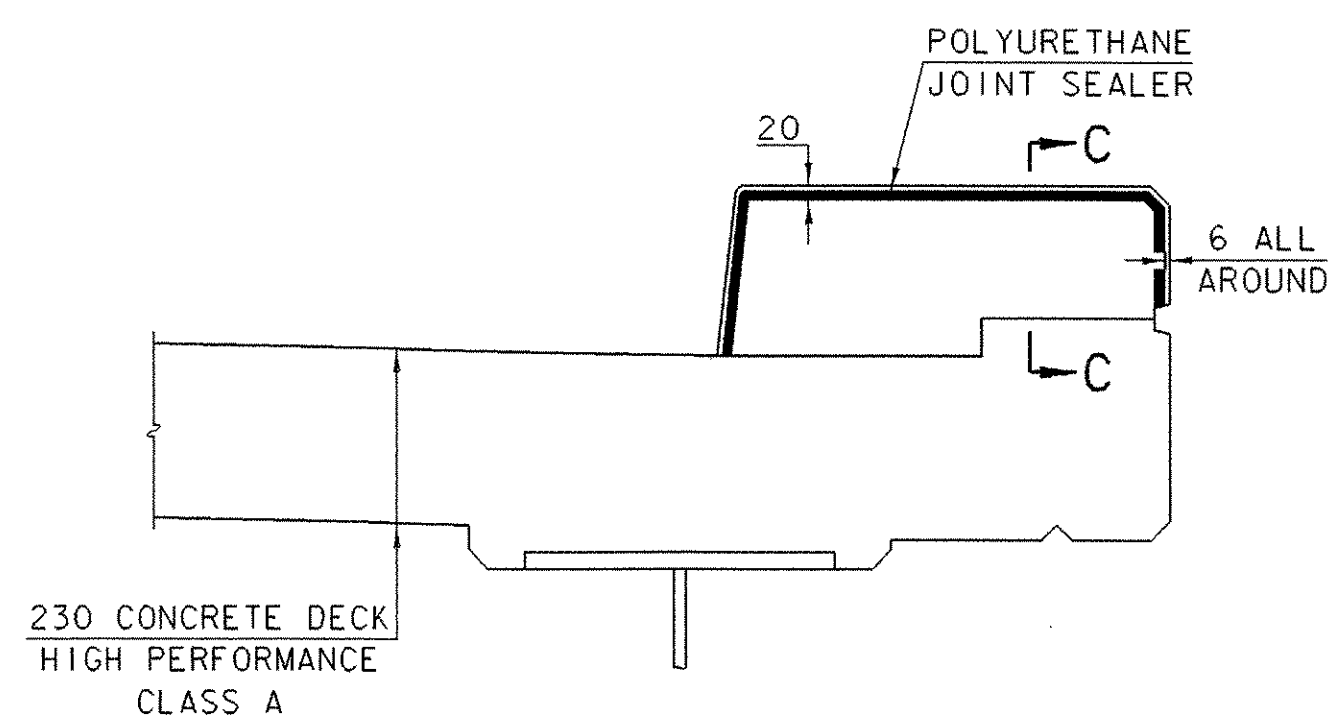


**SCORE MARK DETAIL**



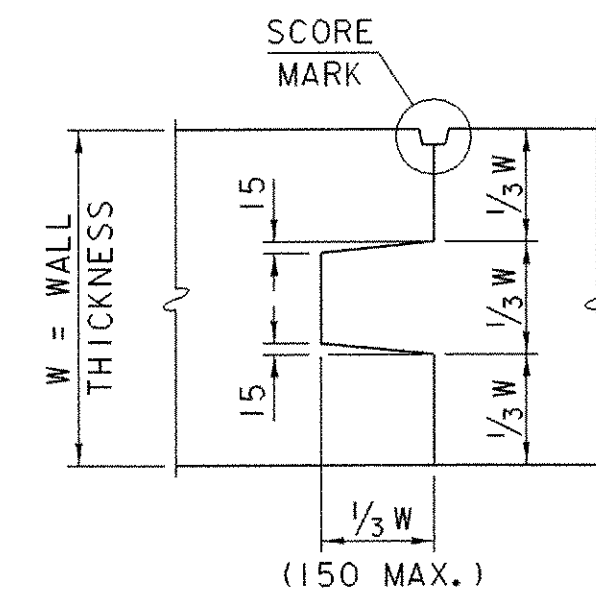
**SECTION C-C**

NOT TO SCALE



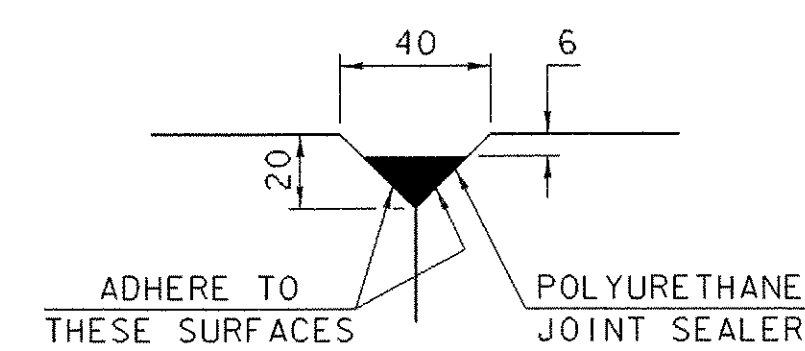
**TYPICAL SECTION THROUGH  
CONCRETE CURB CONSTRUCTION JOINT**

NOT TO SCALE



**TYPICAL CONCRETE  
CONSTRUCTION JOINT**

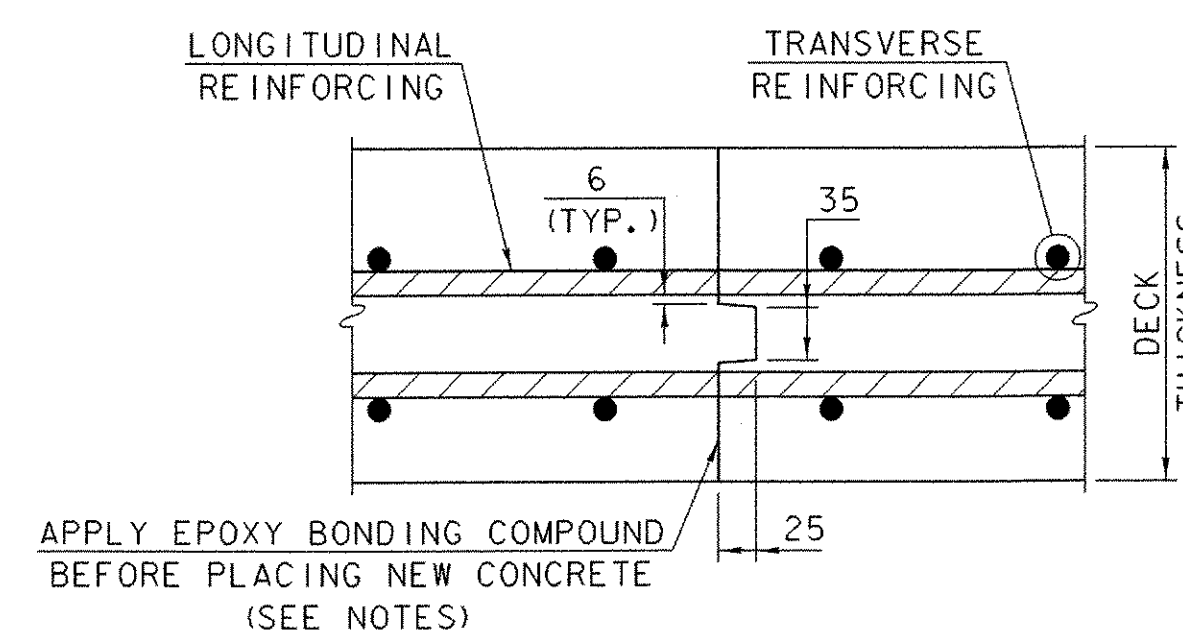
NOT TO SCALE



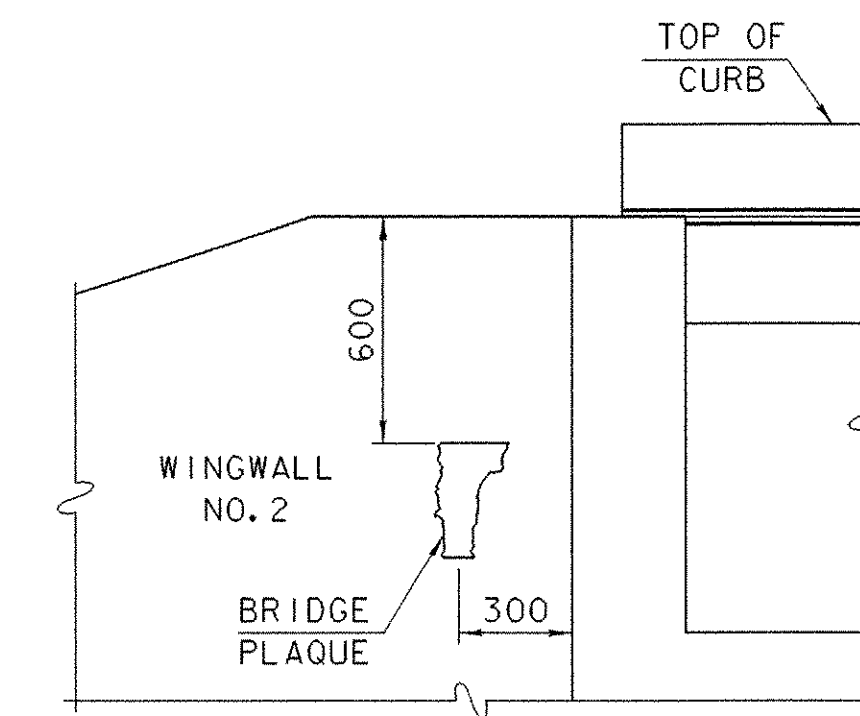
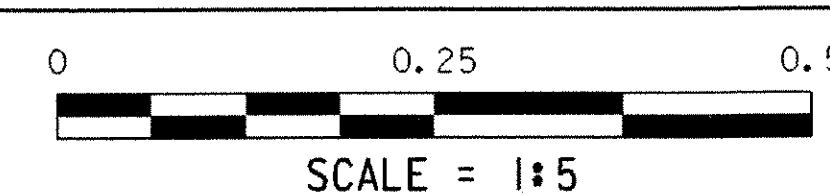
**DETAIL "C"**

NOT TO SCALE

POLYURETHANE JOINT SEALER PER SUBSECTION 524.06(d). COLOR TO MATCH CONCRETE. COST TO BE INCLUDED IN THE UNIT PRICE BID FOR ITEM 501.33, "CONCRETE, HIGH PERFORMANCE CLASS A".



**TRANSVERSE BRIDGE DECK  
CONSTRUCTION JOINT DETAILS**

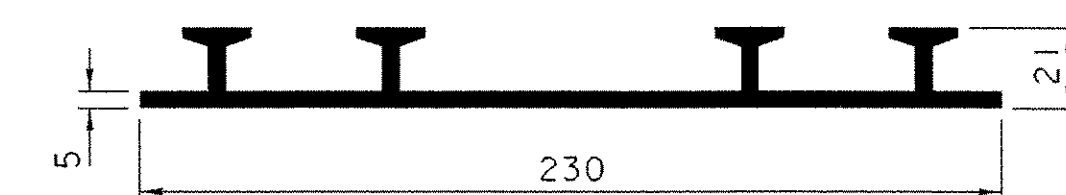


**BRIDGE PLAQUE DETAIL**

NOT TO SCALE

NOTE:

THE BENCH MARK AND BRIDGE PLAQUE WILL BE SUPPLIED BY THE AGENCY OF TRANSPORTATION AND SHALL BE INSTALLED BY THE CONTRACTOR AS SHOWN OR AS DIRECTED BY THE ENGINEER.



**P.V.C. WATERSTOP FOR  
CONSTRUCTION JOINTS**

NOT TO SCALE

THE COST FOR P.V.C. WATERSTOP SHALL BE INCLUDED IN THE UNIT PRICE BID FOR ITEM 501.33, "CONCRETE, HIGH PERFORMANCE CLASS A". OTHER CONFIGURATIONS MAY BE USED UPON APPROVAL OF THE STRUCTURES ENGINEER.

**NOTES:**

1. CONSTRUCTION JOINTS THROUGH CONCRETE CURBS SHALL BE SPACED A MAXIMUM OF 4500 CENTER TO CENTER AND SHALL BE 550 MINIMUM FROM THE CENTER OF THE NEAREST BRIDGE RAIL POST. CONCRETE SHALL BE PLACED IN ALTERNATE SECTIONS WITH A MINIMUM OF 48 HOURS DELAY BETWEEN ADJACENT POURS.
2. LONGITUDINAL REINFORCING SHALL PASS THROUGH CONCRETE CONSTRUCTION JOINTS. CURB REINFORCING STIRRUP BARS SHALL BE TURNED AS REQUIRED TO FIT FLARED ENDS.
3. EPOXY BONDING COMPOUND SHALL BE MADE SUBSIDIARY TO ITEM 501.33, "CONCRETE, HIGH PERFORMANCE CLASS A".

**MISCELLANEOUS PROJECT DETAILS**

PROJECT NAME: BROOKLINE NEWFANE  
PROJECT NUMBER: BHO 1442 (25)

FILE NAME: 951278\Structures\sj278mpd.i PLOT DATE: 26-JUN-2003  
PROJECT MANAGER: R. WHITCOMB DRAWN BY: G. ROY  
DESIGNED BY: M. LOZIER CHECKED BY: M. LOZIER  
SHEET 28 OF 78