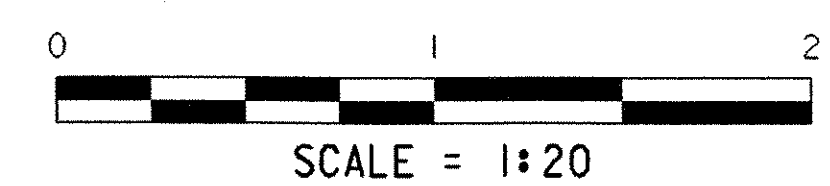
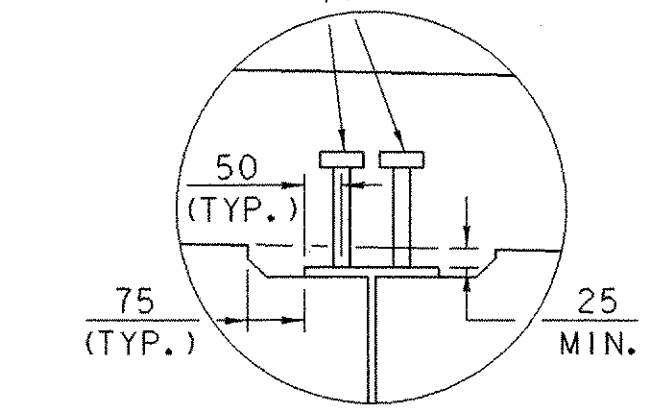


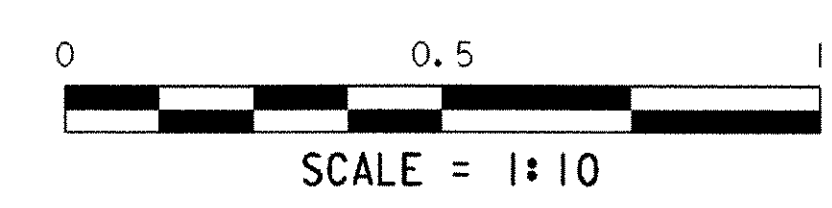
APPROACH SPAN TYPICAL SECTION



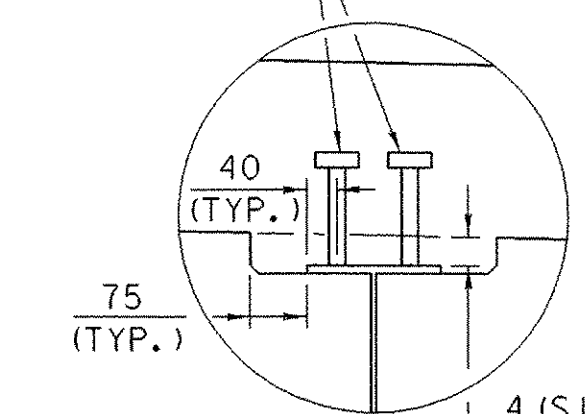
2 ROWS OF 22 DIA. X 150 WELDED STUDS (SEE SHEET 31 FOR ADDITIONAL DETAILS)



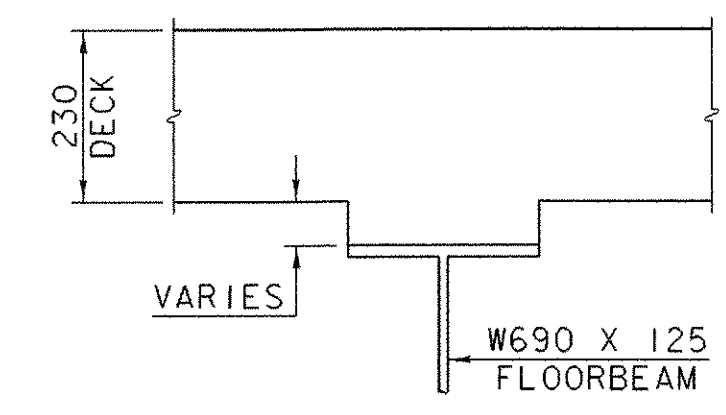
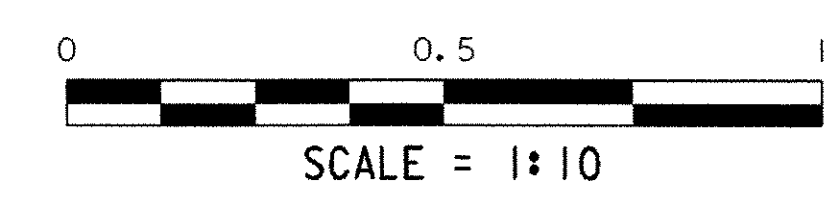
DETAIL "A"



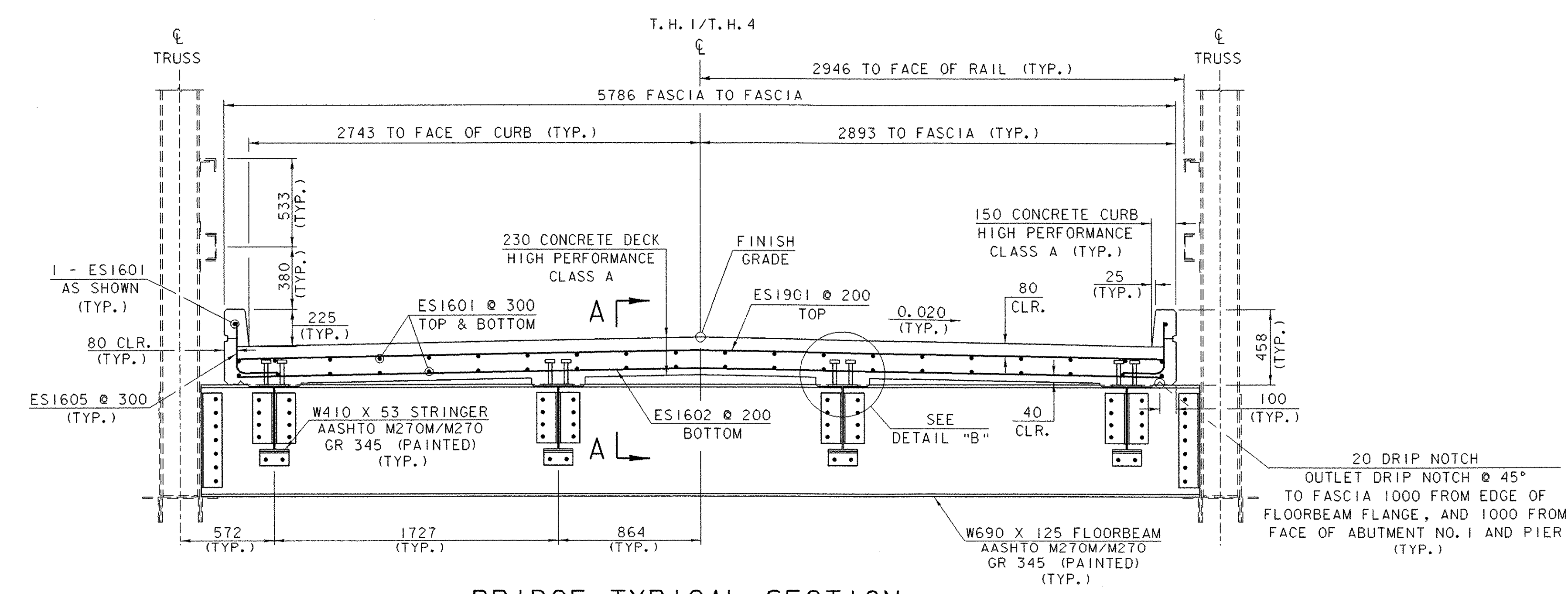
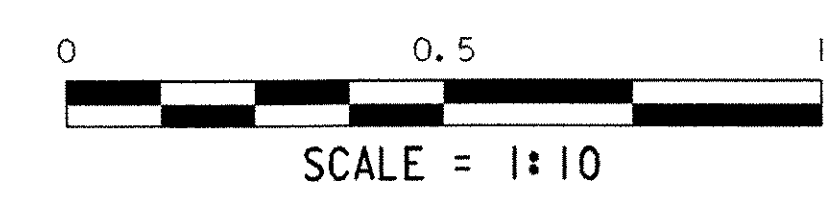
2 ROWS OF 22 DIA. X 150 WELDED STUDS (SEE SHEET 30 FOR ADDITIONAL DETAILS)



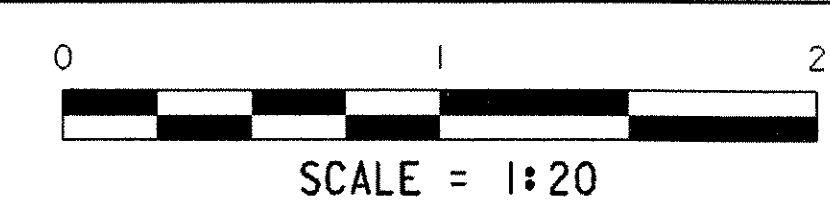
DETAIL "B"



SECTION A-A



BRIDGE TYPICAL SECTION



NOTES:

1. IT IS ANTICIPATED THAT THE CONTRACTOR WILL POUR THE ENTIRE DECK IN ONE EIGHT HOUR POUR. IF THIS IS THE CASE, THE POUR SHALL BEGIN AT THE ABUTMENT NO.1 END AND A RETARDING ADMIXTURE SHALL BE USED IN ORDER THAT THE DECK CONCRETE WILL NOT SET UP UNTIL THE ENTIRE POUR HAS BEEN COMPLETED. THE RETARDING ADMIXTURE SHALL BE SUBSIDIARY TO ITEM 501.33, "CONCRETE, HIGH PERFORMANCE CLASS A". IF THIS IS NOT THE CASE, A POUR SEQUENCE SHALL BE SUBMITTED IN WRITING TO THE STRUCTURES ENGINEER FOR APPROVAL.
2. IF REQUIRED, TRANSVERSE BRIDGE DECK CONSTRUCTION JOINTS AS SHOWN ON SHEET 28 OF THE PLANS SHALL BE USED BETWEEN ADJACENT DECK POURS. THE MINIMUM DELAY PERIOD BETWEEN POURS SHALL BE NINETY-SIX HOURS.
3. ▲ = CUT TO FIT IN FIELD
4. 80 CLR. UNLESS OTHERWISE NOTED

BRIDGE TYPICAL SECTIONS

PROJECT NAME:	BROOKLINE NEWFANE
PROJECT NUMBER:	BHO 1442 (25)
FILE NAME:	95j278\Structures\sj278b+ts.i
PROJECT MANAGER:	R. WHITCOMB
DESIGNED BY:	L. ASHWORTH/S. SCRIBNER
PLOT DATE:	26-JUN-2003
DRAWN BY:	G. ROY
CHECKED BY:	M. LOZIER
SHEET	26 OF 78