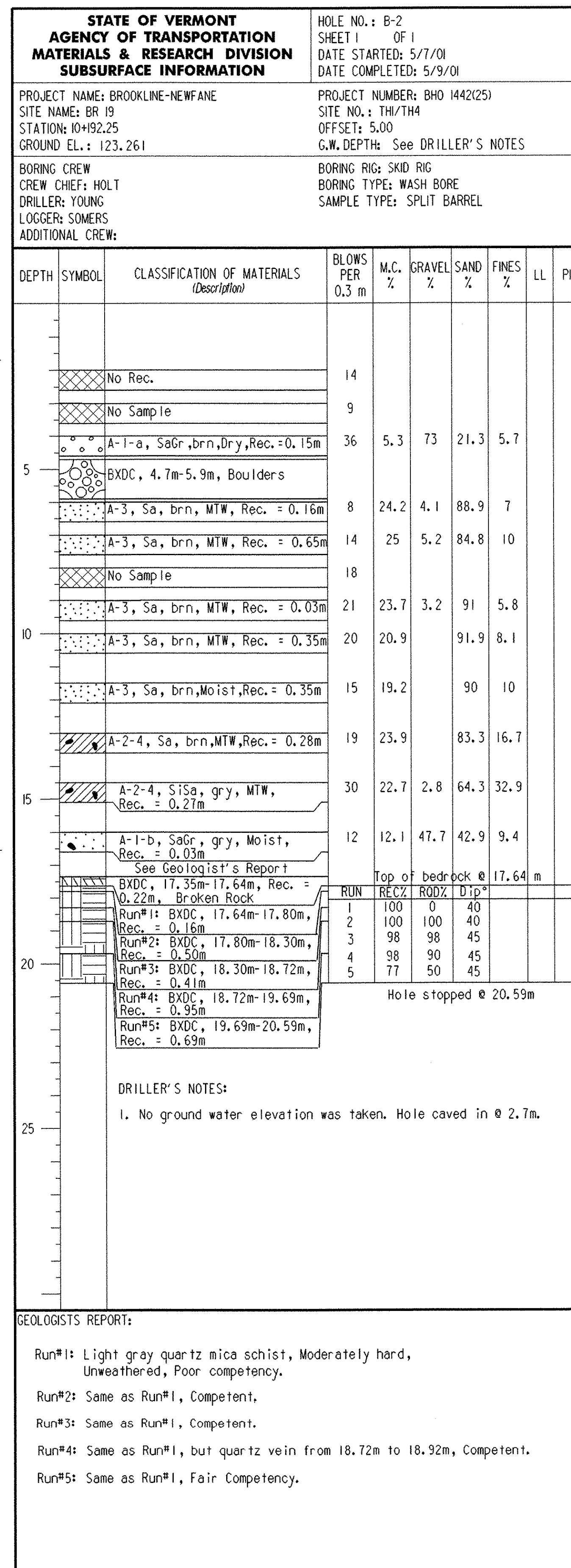


15.9m ESTIMATED PILE LENGTH
(INCLUDING 0.6m EMBEDMENT IN CONCRETE)

BOTTOM OF STEM
ABUT. NO. 2
EL. 121.500

BOTTOM OF PILING
APPROXIMATE
EL. 106.200



15.9m ESTIMATED PILE LENGTH
(INCLUDING 0.6m EMBEDMENT IN CONCRETE)

BOTTOM OF STEM
ABUT. NO. 2
EL. 121.500

BOTTOM OF PILING
APPROXIMATE
EL. 106.200

BORING INFORMATION SHEET (2)

PROJECT NAME:	BROOKLINE NEWFANE
PROJECT NUMBER:	BHO 1442 (25)
FILE NAME:	95J278\Structures\sj278b02.i
PROJECT MANAGER:	R. WHITCOMB
DESIGNED BY:	G. ROY
PLOT DATE:	26-JUN-2003
DRAWN BY:	G. ROY
CHECKED BY:	M. LOZIER
SHEET	21 OF 78