

CONSTRUCT PAVED APRON
10+077.9 LT.

UNDERDRAIN FLUSHING BASIN (FB)
10+095.0 LT.

RECONSTRUCT T.H. 15 APPROACH
10+096.5 RT.
10+104.3 LT.

RELOCATE MAILBOX, SINGLE SUPPORT
FROM 10+211.6 LT. TO 10+225.0 LT.
210.0

CONSTRUCT PAVED DRIVE
10+100.6 LT.
10+223.7 LT.

HEAVY DUTY STEEL BEAM GUARDRAIL
10+105.7 RT. - 10+130.5 RT.
10+109.5 LT. - 10+130.5 LT.
10+187.1 LT. - 10+211.3 LT.
10+189.4 RT. - 10+213.7 RT.

BRIDGE RAILING-2 RAIL GALV. BOX BEAM (MOD.)
10+179.2 LT. - 10+187.1 LT.
10+179.3 RT. - 10+189.4 RT.

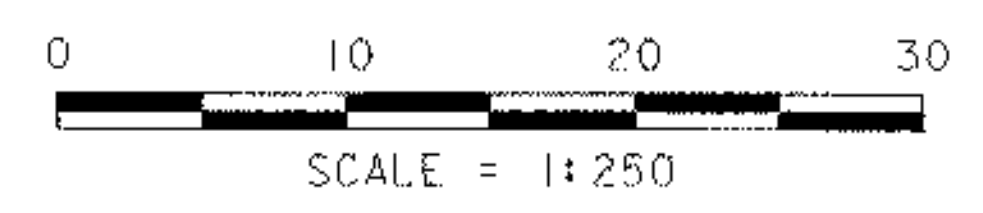
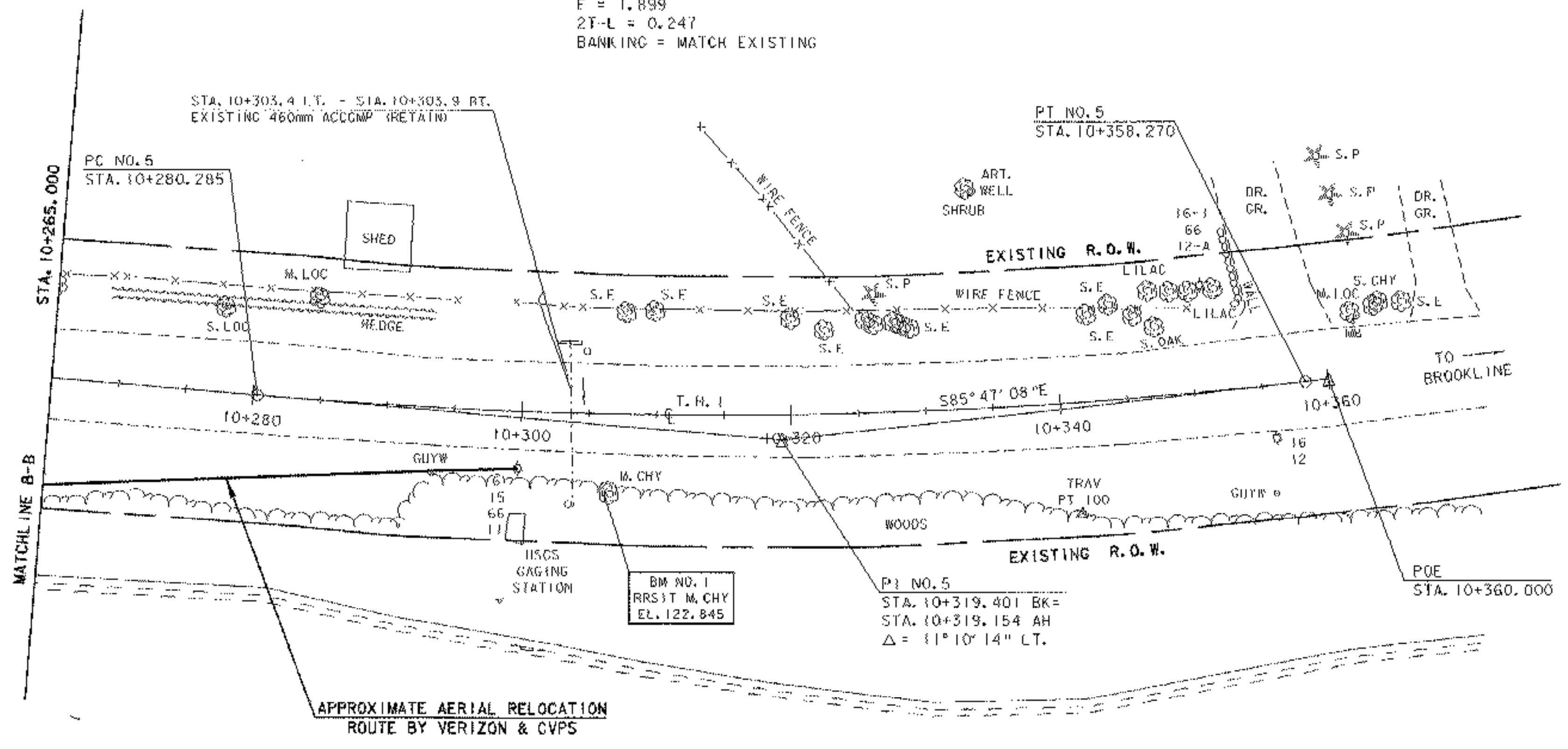
ANCHOR FOR STEEL BEAM RAIL
10+107.5 RT.
10+109.8 LT.
10+209.8 RT.
10+211.1 RT.

150mm UNDERDRAIN
10+095.0 LT. - 10+118.8 LT.

REMOVAL AND DISPOSAL OF GUARDRAIL
10+107.3 RT. - 10+129.7 RT.
10+109.0 LT. - 10+129.7 LT.
10+188.0 LT. - 10+212.5 LT.
10+189.7 RT. - 10+213.6 RT.

CURVE DATA NO. 5
 $\Delta = 11^\circ 10' 14''$
 $R = 400.000$
 $T = 39.116$
 $L = 77.985$
 $E = 1.899$
 $2T-L = 0.247$
BANKING = MATCH EXISTING

150mm UNDERDRAIN CARRIER PIPE
10+118.8 LT. - 10+124.6 LT.
0.6m VERT. @ 10+095.0 LT.



LAYOUT SHEET (3)

PROJECT NAME:	BROOKLINE NEWFANE
PROJECT NUMBER:	BHO 1442 (25)
FILE NAME:	95\278\Structures\sj278103.J
PROJECT MANAGER:	R. WHITCOMB
DESIGNED BY:	G. ROY
PLOT DATE:	26-JUN-2003
DRAWN BY:	G. ROY
CHECKED BY:	M. LOZIER
SHEET	13 OF 78