

GPS CONTROL POINTS

HVCTRL # 1

STANDARD DISK STAMPED

NEWLINE AZ MK

NORTHING: 54721.998
 EASTING: 487663.805
 ELEVATION: 178.75

STATION MARK IS A SURVEY DISK SET INTO THE TOP OF AN IRREGULAR MASS OF CONCRETE. THE MARK IS STAMPED NEWLINE AZ MK 1996.

THE MARK IS 19.3 KM NORTH OF BRATTLEBORO, 14.5 KM WEST OF THE CONNECTICUT RIVER, AND 37.0 KM SOUTH OF SPRINGFIELD. TO REACH FROM THE POST OFFICE IN NEWFANE, PROCEED NORTH ON VT 30 FOR 1.0 KM TO THE MARK ON THE LEFT. THE MARK IS 23.5 M NORTH NORTHEAST OF THE NORTHEAST CORNER OF THE COUNTY SEAT STORE, 9.1 M SOUTH OF A COMBINATION POLE NUMBER 162/333/145, 7.3 M EAST OF THE CENTERLINE OF VT 30 AND 3.0 M SOUTH OF A FIBERGLASS WITNESS POST.

• DESCRIPTION PROVIDED BY VERMONT AGENCY OF TRANSPORTATION GEODETIC SURVEY UNIT

HVCTRL # 2

STANDARD DISK STAMPED

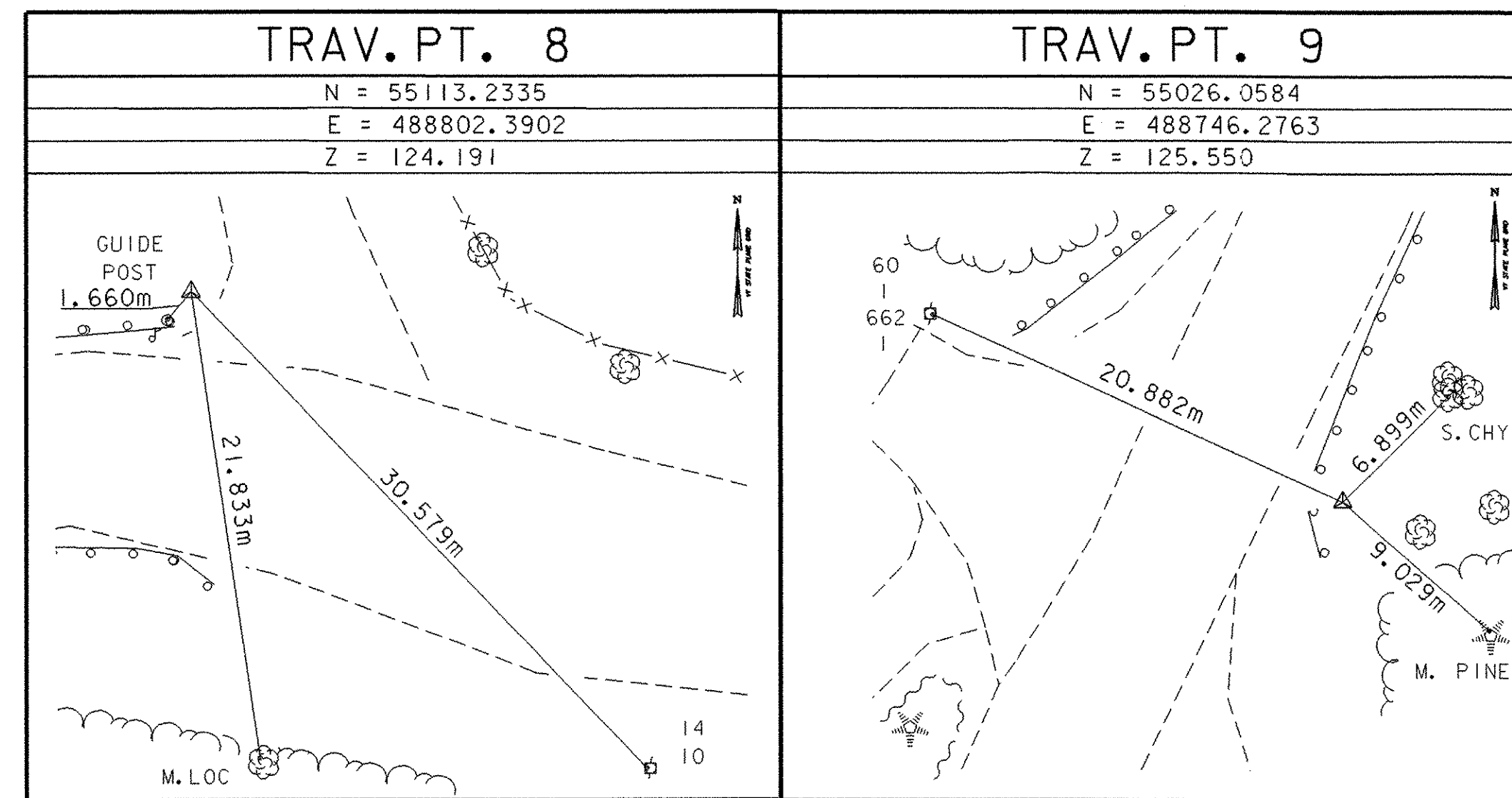
NEWLINE

NORTHING: 55029.772
 EASTING: 487912.390
 ELEVATION: 176.59

STATION MARK IS A SURVEY DISK SET INTO THE TOP OF AN IRREGULAR MASS OF CONCRETE. THE MARK IS STAMPED NEWLINE 1996.

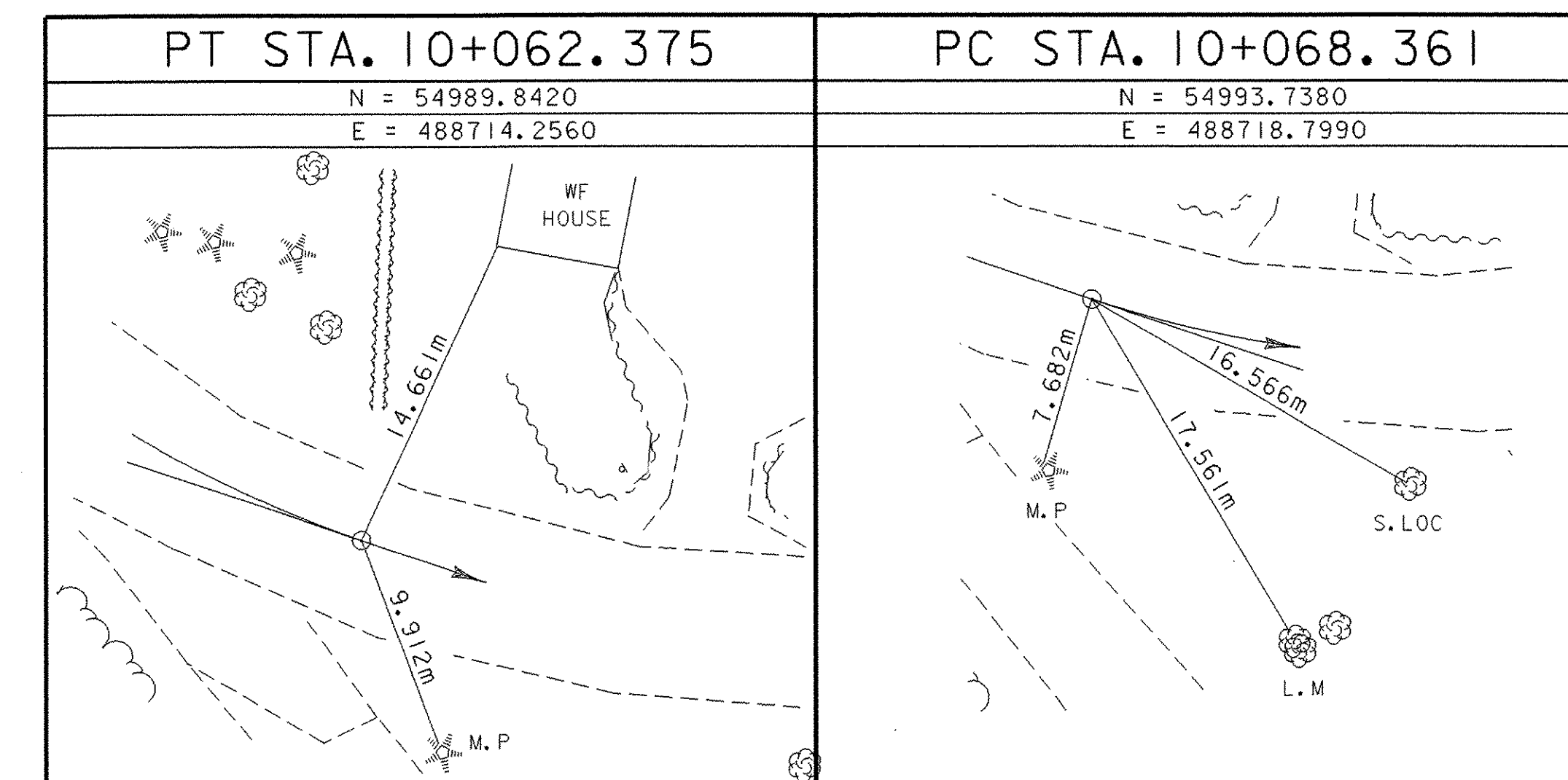
THE MARK IS 19.3 KM NORTH OF BRATTLEBORO, 14.5 KM WEST OF THE CONNECTICUT RIVER, AND 37.0 KM SOUTH OF SPRINGFIELD. TO REACH FROM THE POST OFFICE IN NEWFANE, PROCEED NORTH ON VT 30 FOR 1.37 KM TO THE MARK ON THE LEFT. THE MARK IS 28.3 M SOUTH OF A COMBINATION POLE NUMBER 153/342, 18.9 M SOUTHWEST OF A COMBINATION POLE NUMBER 341/6/152X, 7.0 M WEST OF THE CENTERLINE OF VT 30 AND 0.9 M EAST OF A FIBERGLASS WITNESS POST.

TRAVERSE TIES

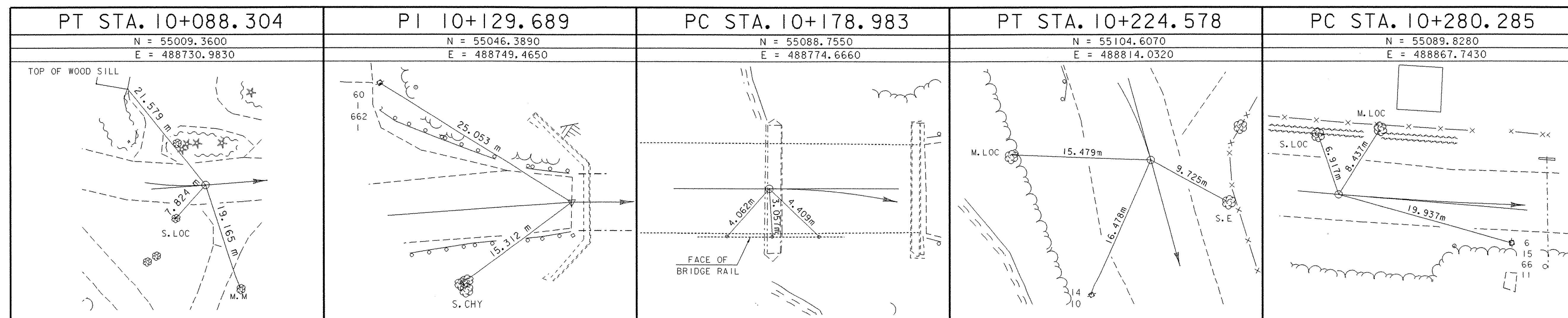


• MAIN TRAVERSE COMPLETED April 30, 1997 by L. Orvis & R. Bullock

ALIGNMENT TIES



ALIGNMENT TIES



• ALIGNMENT STAKED 01/16/01 by L. Orvis (P.C.) & J. Hulett

TIE SHEET

DATUM	
VERTICAL	NAVD 88
HORIZONTAL	NAD 83 (92)
ADJUSTMENT	Least Squares

PROJECT NAME:	BROOKLINE-NEWFANE
PROJECT NUMBER:	BHO 1442 (25)
FILE NAME:	95j278/Structures/sj278tie.i
PROJECT MANAGER:	R. WHITCOMB
DESIGNED BY:	G. ROY
PLOT DATE:	26-JUN-2003
DRAWN BY:	R. BULLOCK
CHECKED BY:	M. LOZIER
SHEET	10 OF 78