

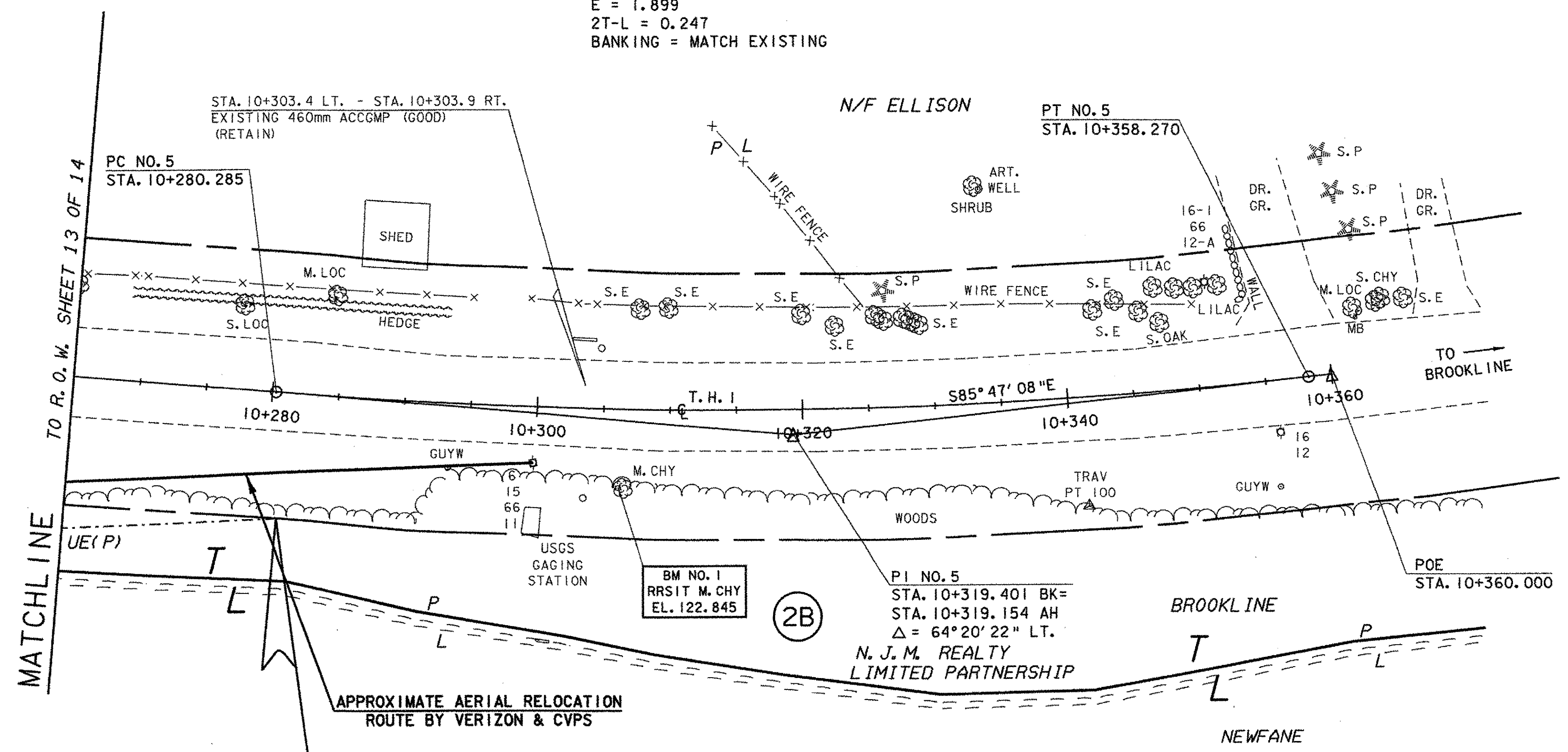
3

MORRISON, JOHN W. & MARTHA R.

CURVE DATA NO. 5
 $\Delta = 64^\circ 20' 22''$
 $R = 400.000$
 $T = 39.116$
 $L = 77.985$
 $E = 1.899$
 $2T-L = 0.247$
 BANKING = MATCH EXISTING

- RECONSTRUCT T. H. 15 APPROACH**
 10+096.5 RT.
 10+104.3 LT.
- CONSTRUCT PAVED DRIVE**
 10+100.6 LT.
 10+221.7 LT.
- CONSTRUCT PAVED APRON**
 10+077.9 LT.
- CONSTRUCT PAVED SIDEWALK**
 10+108.0 LT. - 10+129.7 LT.
 10+187.3 LT. - 10+213.9 LT.
- ANCHOR FOR STEEL BEAM RAIL**
 10+107.5 RT.
 10+109.8 LT.
 10+209.8 LT.
 10+211.1 RT.

- HD STEEL BEAM GUARD RAIL**
 10+105.7 RT. - 10+130.5 RT.
 10+109.5 LT. - 10+130.5 LT.
 10+187.1 LT. - 10+211.3 LT.
 10+189.2 RT. - 10+213.5 RT.
- BRIDGE RAILING-2 RAIL GALV. BOX BEAM (MOD.)**
 10+179.2 LT. - 10+187.1 LT.
 10+179.3 RT. - 10+189.2 RT.
- PEDESTRIAN RAIL/GALV. BOX BEAM (MOD.)**
 10+120.0 LT. - 10+193.2 LT.
- REMOVAL AND DISPOSAL OF GUARD RAIL**
 10+107.3 RT. - 10+129.7 RT.
 10+109.0 LT. - 10+129.7 LT.
 10+188.0 LT. - 10+212.5 LT.
 10+189.7 RT. - 10+213.6 RT.
- RELOCATE MAIL BOX SINGLE SUPPORT**
 FROM 10+211.6 LT. TO 10+207.8 LT.

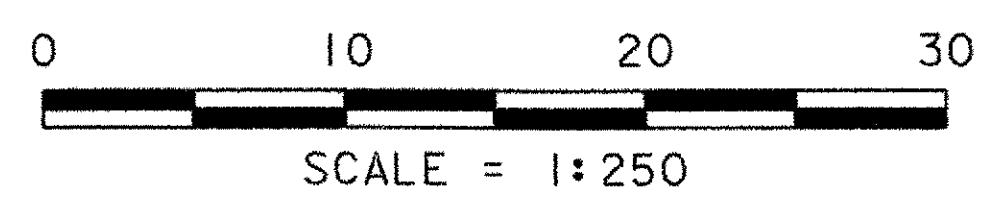


THIS SHEET IS FOR R.O.W. PURPOSES ONLY.

FOR EROSION CONTROL DETAIL SEE R.O.W. SHEET 10 OF 14

LINES SHOWN ON THIS PLAN AS EXISTING PROPERTY LINES (P/L) ARE BELIEVED TO BE ACCURATE BUT SHOULD NOT BE RELIED UPON FOR PURPOSES UNRELATED TO THE TOWNS OF BROOKLINE'S & NEWFANE'S ACQUISITION OF LAND AND RIGHTS FOR THIS PROJECT.

END R. O. W. PROJECT
 BROOKLINE-NEWFANE BHO 1442(25)
 STA. 10+281.030 9.5M (31') RT.



RIGHT-OF-WAY
 JUN 14 2002
 PRELIMINARY PLANS
 COMPLETED PLANS
 FINAL PLANS

LAYOUT SHEET (3)

| | |
|----------------------|------------------------------|
| PROJECT NAME: | BROOKLINE NEWFANE |
| PROJECT NUMBER: | BHO 1442 (25) |
| FILE NAME: | 95J278\Structures\sj278i03.i |
| PROJECT MANAGER: | DRAWN BY: |
| DESIGNED BY: | CHECKED BY: |
| SHEET 9 OF 78 SHEETS | |