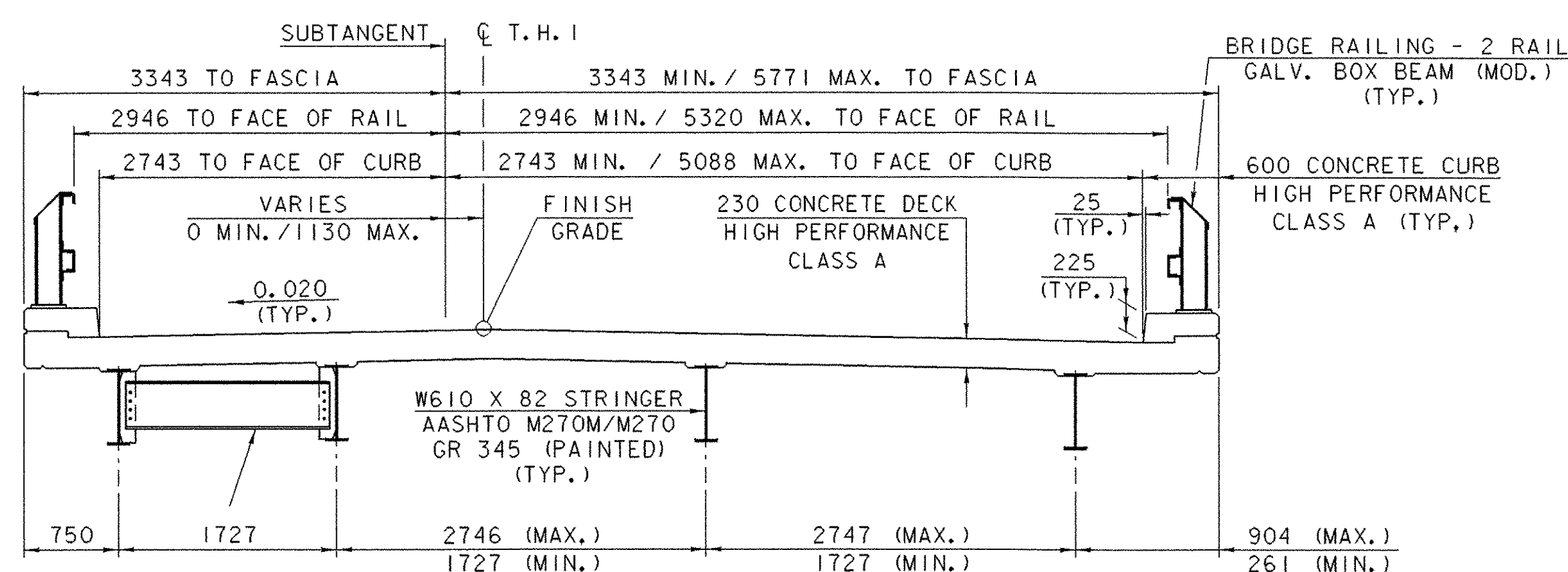
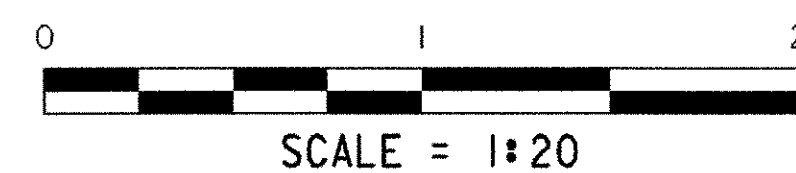
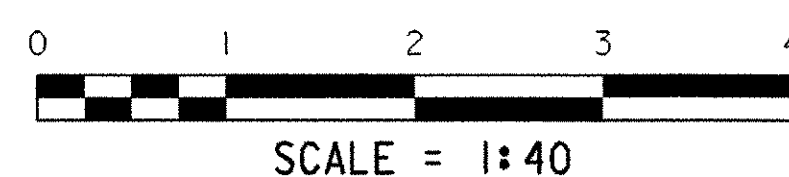


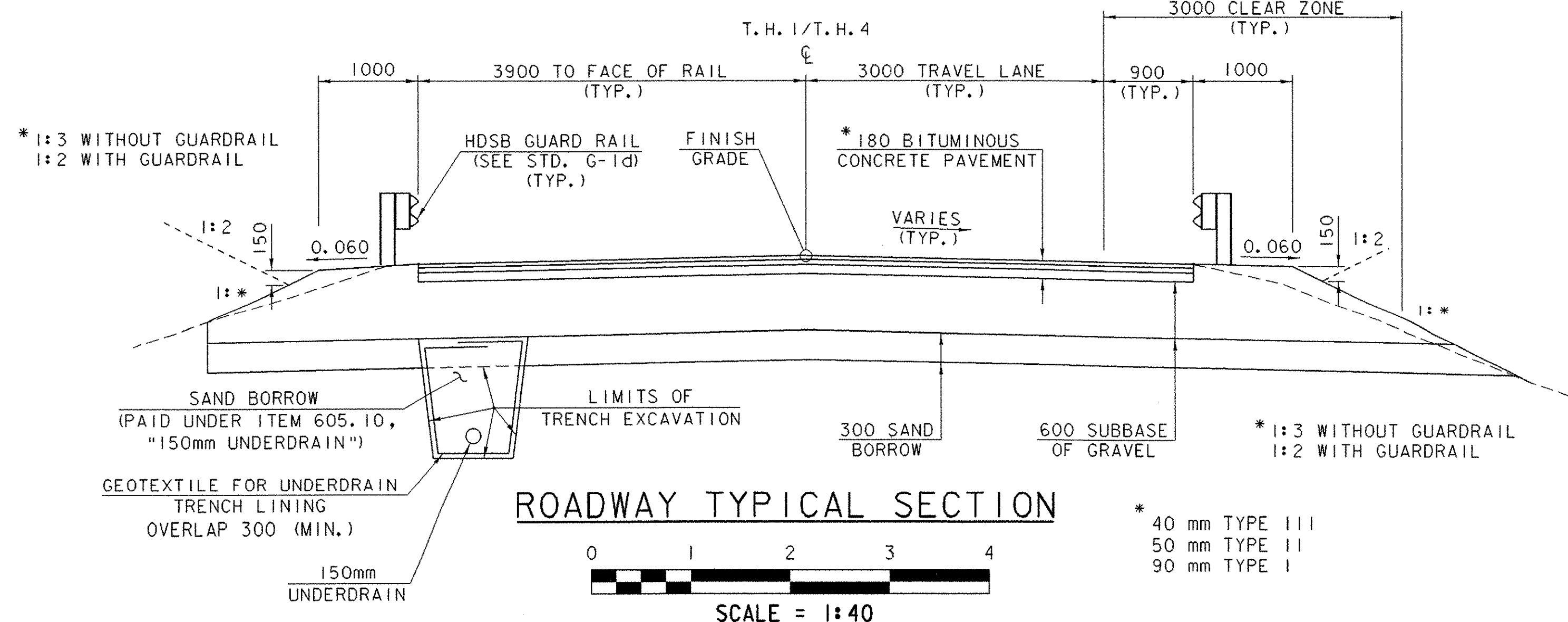
**BRIDGE TYPICAL SECTION**



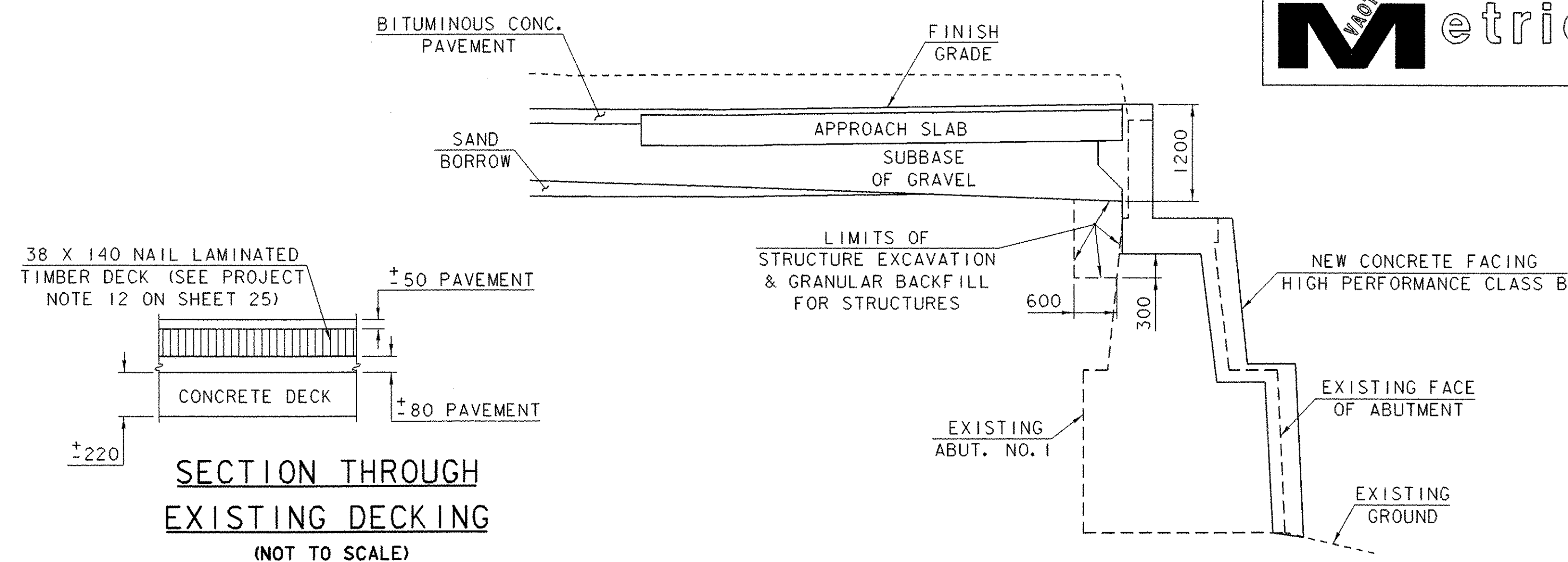
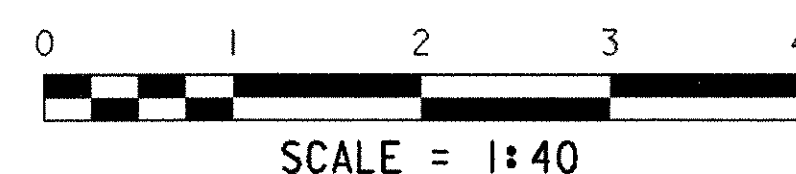
**APPROACH SPAN TYPICAL SECTION**



INTERMEDIATE DIAPHRAGM C380 X 50 AASHTO M270M/M270 GR 345 (PAINTED) (TYP.)

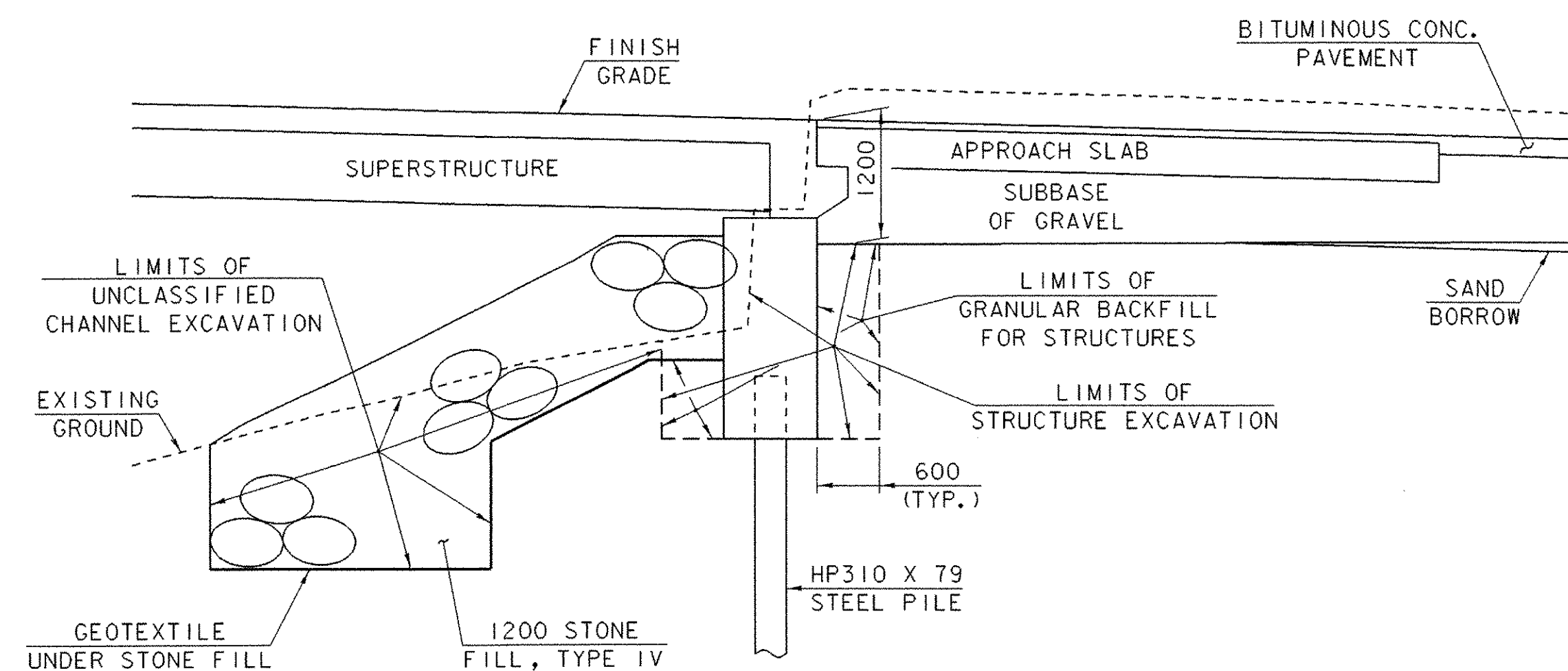


**ROADWAY TYPICAL SECTION**



**SECTION THROUGH EXISTING DECKING**  
(NOT TO SCALE)

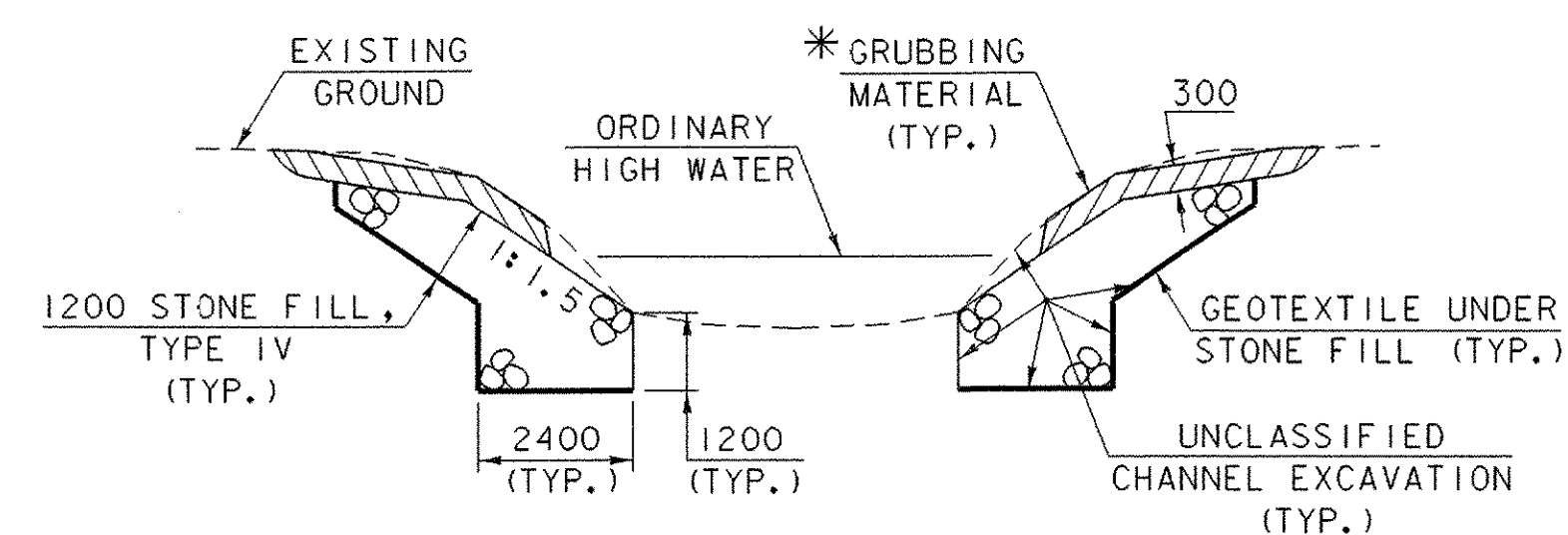
**ABUTMENT NO. 1 EARTHWORK TYPICAL SECTION**  
(NOT TO SCALE)



**ABUTMENT NO. 2 EARTHWORK TYPICAL SECTION**  
(NOT TO SCALE)

**NOTES:**

- FOR THE PURPOSES OF ESTIMATING EARTHWORK QUANTITIES, THE LIMITS OF STRUCTURE EXCAVATION HAVE BEEN ASSUMED TO BE AS SHOWN ABOVE. ONLY THE EXCAVATION INCLUDED BETWEEN THESE LIMITS SHALL BE PAID FOR UNDER ITEM 204.25, "STRUCTURE EXCAVATION".
- EXCAVATION LIMITS FOR THE REMOVAL OF THE EXISTING ABUTMENT NO. 2 FOUNDATION, INCLUDING TIMBER PILES, ARE NOT SHOWN. THESE LIMITS ARE TO BE DETERMINED BY THE CONTRACTOR. SEE PROJECT NOTE 15 ON SHEET 25 FOR ADDITIONAL INFORMATION.



**CHANNEL TYPICAL SECTION**  
(NOT TO SCALE)

\* GRUBBING MATERIAL SHALL NOT BE PLACED ON THE STONE FILL IN THE AREA UNDER THE BRIDGE. WHENEVER CHANNEL SLOPE INTERSECTS ROADWAY SUBBASE, GRUBBING MATERIAL SHALL BEGIN AT THE BOTTOM OF SUBBASE.

MATERIAL ITEM	TOLERANCE
PAVEMENT	±5 mm TOTAL THICKNESS
BASE COURSE	±15 mm
SUBBASE	±30 mm
SAND BORROW	±30 mm
GRANULAR BORROW	±30 mm

**PROJECT TYPICAL SECTIONS (I)**

PROJECT NAME:	BROOKLINE NEWFANE
PROJECT NUMBER:	BHO 1442 (25)
FILE NAME:	95j278\Structures\sj278typ.i
PROJECT MANAGER:	R. WHITCOMB
DESIGNED BY:	M. LOZIER
PLOT DATE:	26-JUN-2003
DRAWN BY:	G. ROY
CHECKED BY:	M. LOZIER
SHEET	3 OF 78