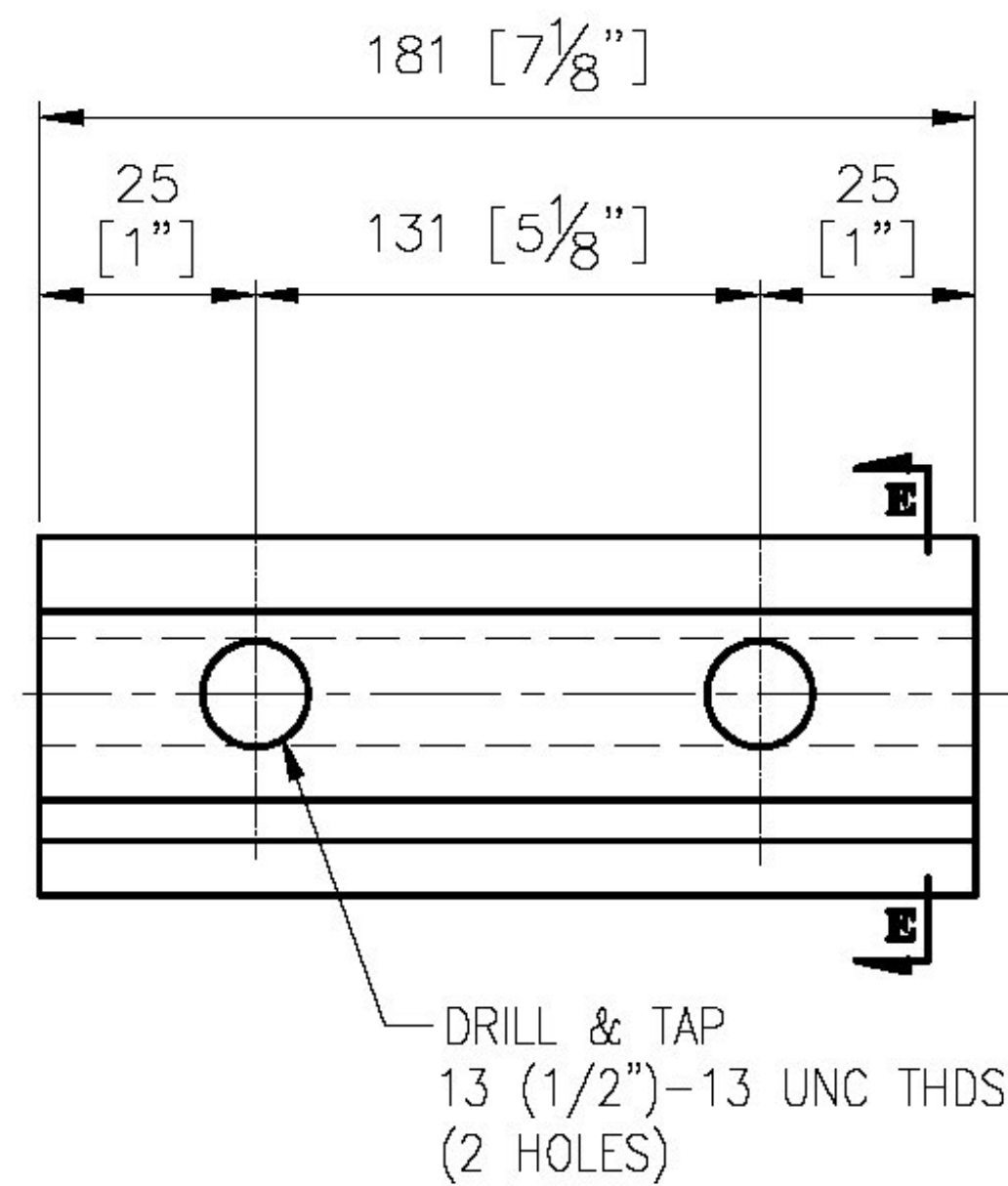
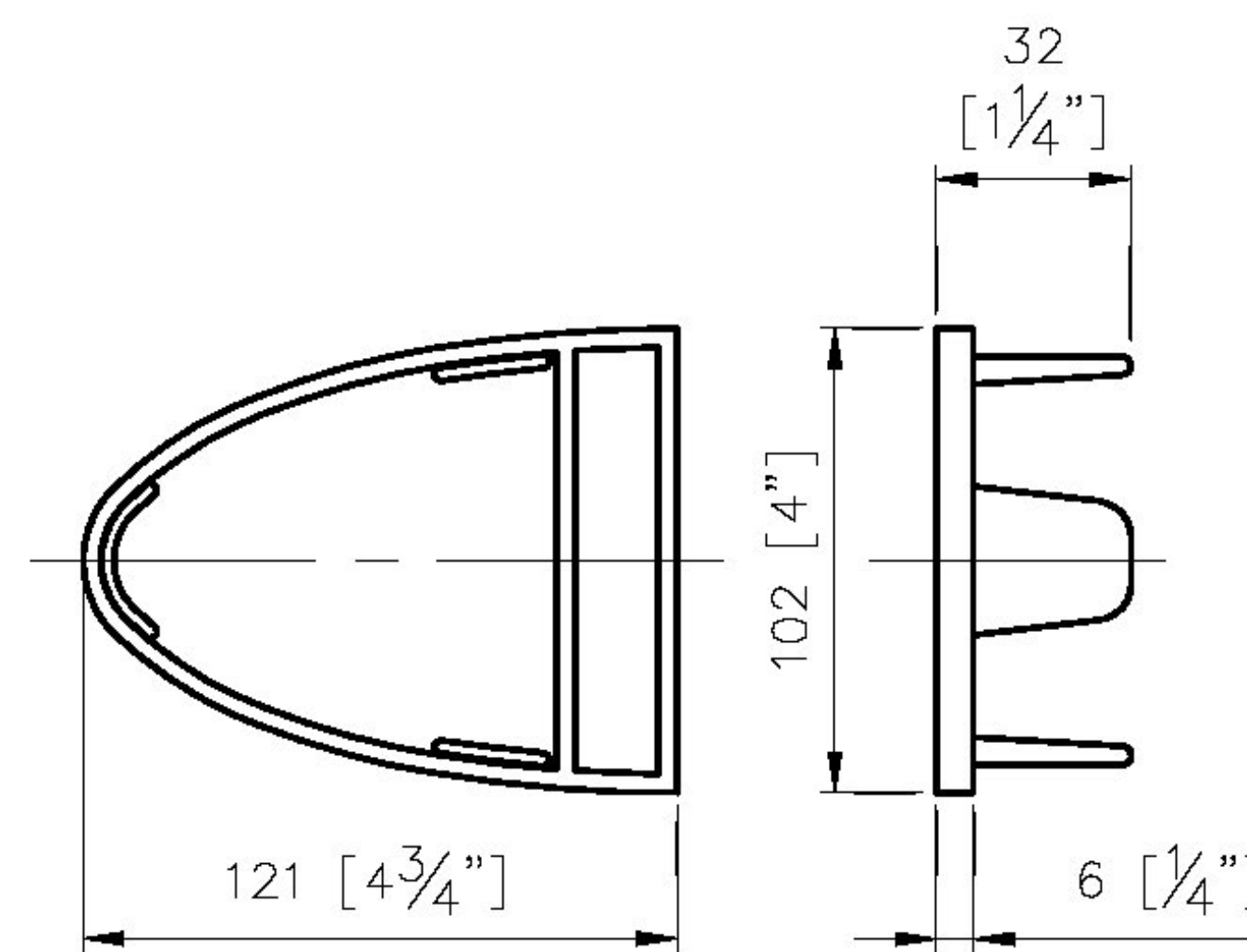
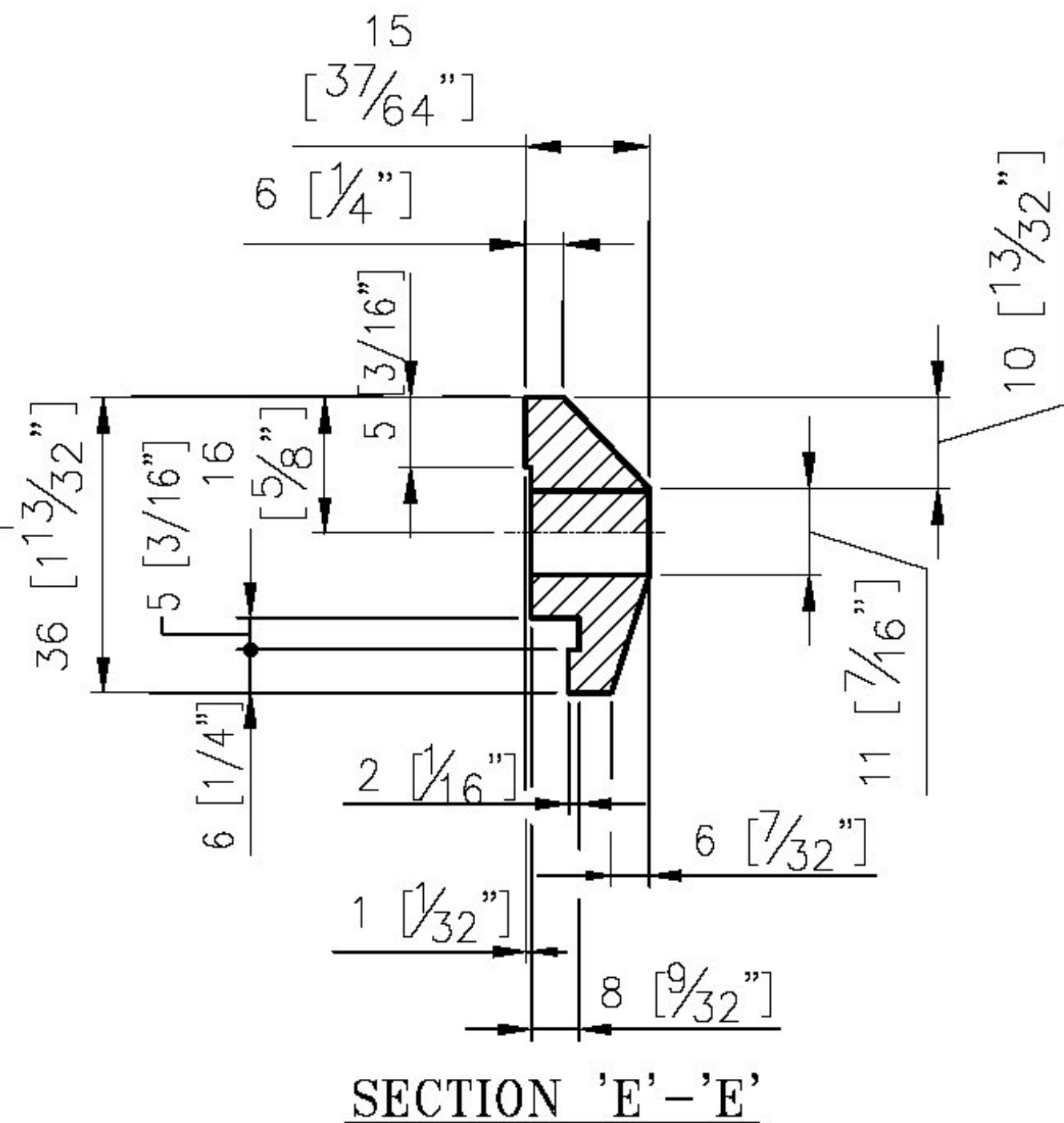


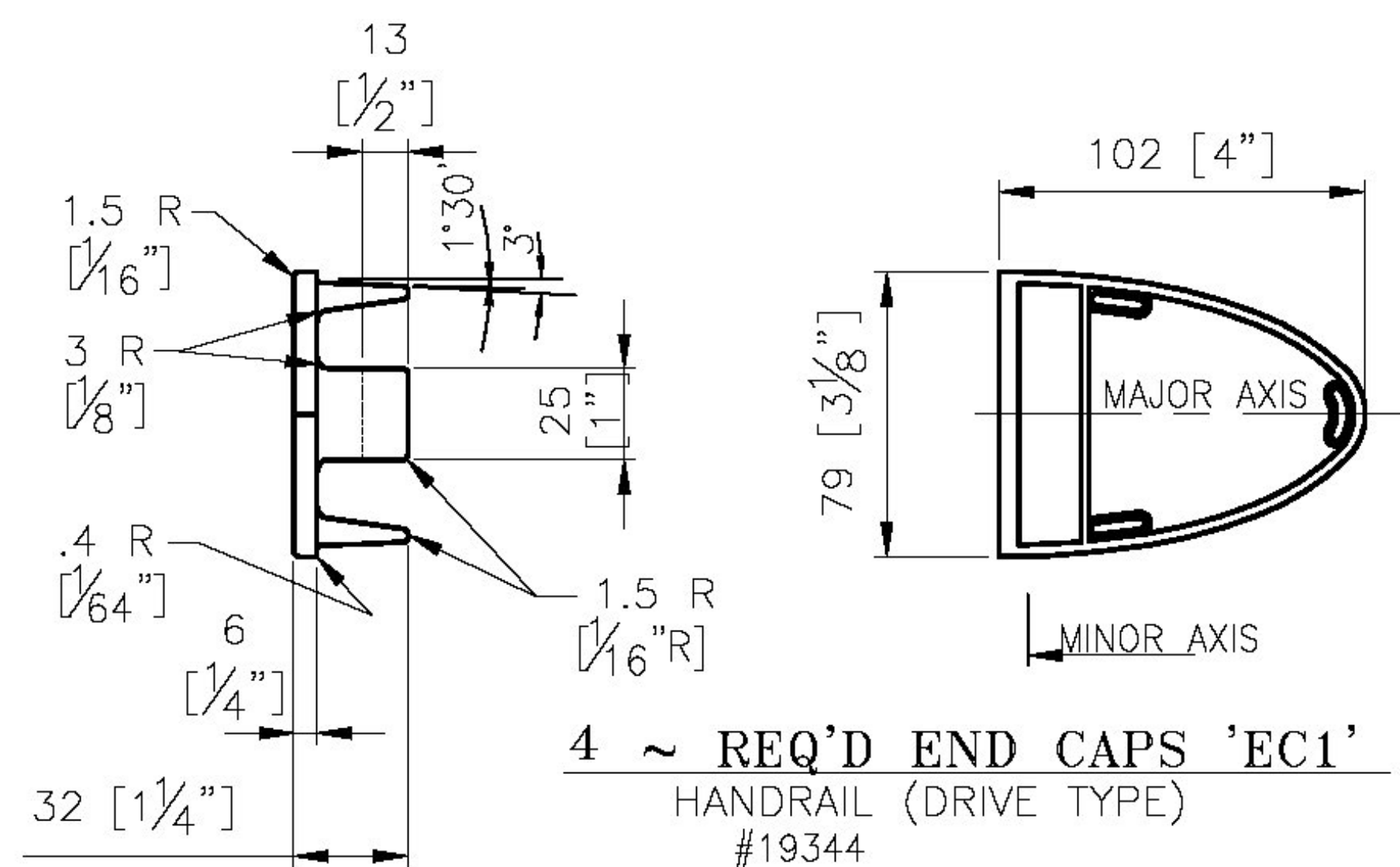
204 ~ REQ'D CLAMP  
 BAR CB-03-A #19447  
 (BARRIER RAIL)



40 ~ REQ'D CLAMP  
 BAR CB-01-H #28596  
 (HANDRAIL)



8 ~ REQ'D ALUM  
 END CAPS EC2  
 #19345



4 ~ REQ'D END CAPS 'EC1'  
 HANDRAIL (DRIVE TYPE)  
 #19344

NOTE:  
 PRIMARY DIMENSIONS ARE METRIC  
 UNITS IN MM. DIMENSIONS SHOWN  
 [ ] THUS ARE THE ENGLISH  
 CONVERSION.

ITEM No: 621.745

APPROVED: _____	REC'D APPROVAL _____
DRAWING _____	
<b>L.B. FOSTER COMPANY</b> 1016 GREENTREE ROAD PITTSBURGH, PENNSYLVANIA 15220	
FOR: F. R. LAFAYETTE, INCORPORATED VERMONT AGENCY OF TRANSPORTATION	
COUNTY OF WINDHAM - TOWN OF NEWFANE - PROJ. #BRF 0106(3)S 3L ALUM APPROACH RAILING - RTE: TH2 CLASS 2 (MAJOR COLLECTOR) BRIDGE 14 OVER MARLBORO BRANCH - MISC DETAILS	
MADE CMS DATE 02/03/12 JOB No. AR0720 CUST. No.	CHECK Dd DATE 02/13/12 DRAWING LB13 (LAST) REV. No.

Vermont Agency of Transportation  
**RECEIVED**  
 CK'D BY GFR OK'D BY \_\_\_\_\_  
 03/29/2012  
 RESUBMIT \_\_\_\_\_ APPROVED X  
 BY C. CARLSON DATE 03/30/2012

**ANODIZED**  
 (SEE NOTES ON LB1)

REV.	DESCRIPTION	BY	DATE