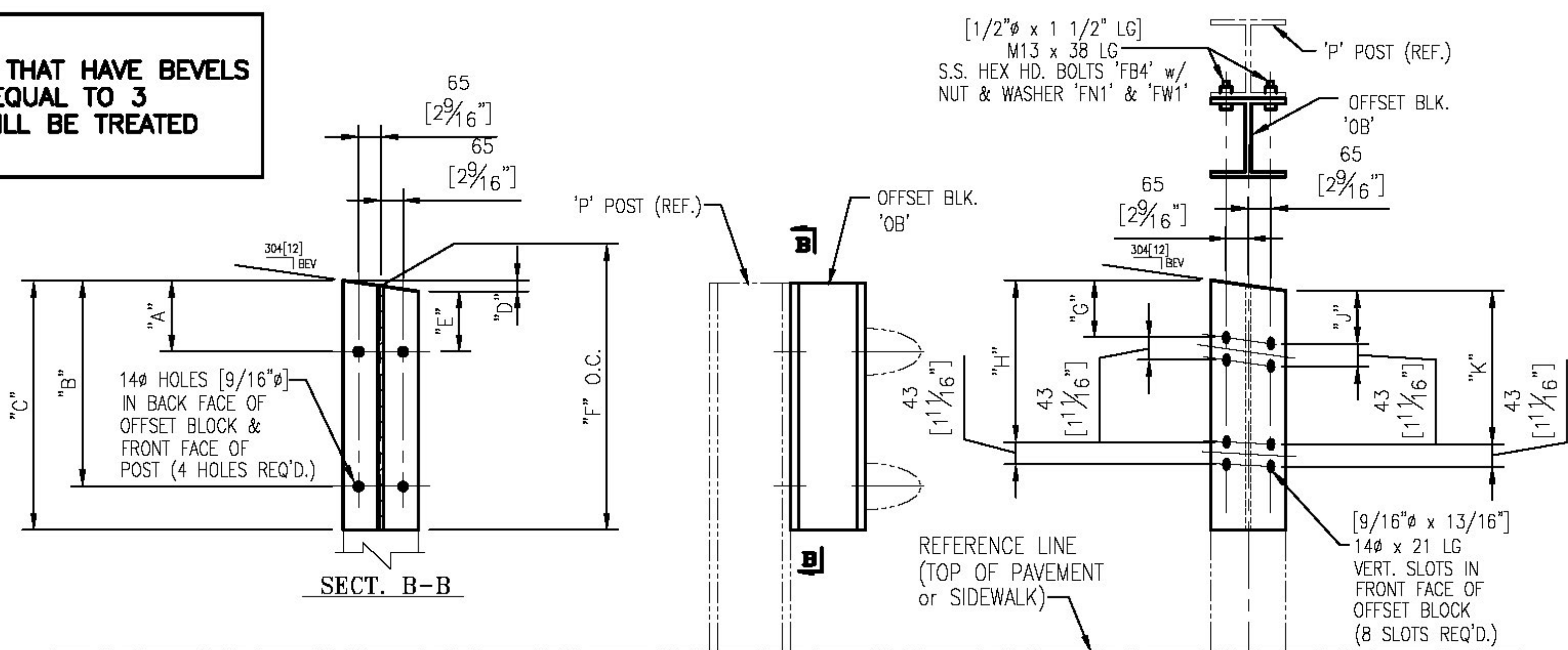


***NOTE:**
FOR POST TOPS THAT HAVE BEVELS
LESS THAN OR EQUAL TO 3
- THE POSTS WILL BE TREATED
SQUARE.



OFFSET BLOCK CHART FOR NW APPROACH $\triangle 1$
POSTS P5-P8

POST No.	OFFSET BLOCK	QTY.	OFFSET BLOCK ~ POST MTG. DIMENSIONS						BEV
			A	B	C	D	E	F (O.C.)	
P5	OB5	1	56 [2 3/16"]	428 [1'-4 7/8"]	503 [1'-7 3/16"]	11 [7/16"]	46 [1 13/16"]	497 [1'-7 9/16"]	18 [1 1/16"]
P6	OB6	1	56 [2 3/16"]	405 [1'-3 5/16"]	480 [1'-6 1/8"]	11 [7/16"]	46 [1 13/16"]	475 [1'-6 1/16"]	18 [1 1/16"]
P7	OB7	1	56 [2 3/16"]	382 [1'-3 1/16"]	457 [1'-6"]	11 [7/16"]	46 [1 13/16"]	452 [1'-5 3/16"]	18 [1 1/16"]
P8	OB8	14	53 [2 1/16"]	373 [1'-2 1/16"]	448 [1'-5 5/8"]	5 [3/16"]	49 [1 15/16"]	446 [1'-5 9/16"]	7 [5/16"]

OFFSET BLOCK CHART FOR NE & SW APPROACHES $\triangle 1$
POSTS P13-P16, P21-P23

POST No.	OFFSET BLOCK	QTY.	OFFSET BLOCK ~ POST MTG. DIMENSIONS						BEV
			A	B	C	D	E	F (O.C.)	
P13	OB13	1	52 [2 1/16"]	423 [1'-4 5/8"]	498 [1'-7 5/8"]	2 [1/16"]	50 [1 15/16"]	497 [1'-7 9/16"]	3 [1/8"]
P14	OB14	1	52 [2 1/16"]	400 [1'-3 3/4"]	475 [1'-6 1/16"]	2 [1/16"]	50 [1 15/16"]	474 [1'-6 1/16"]	3 [1/8"]
P15	OB15	1	52 [2 1/16"]	378 [1'-2 7/8"]	453 [1'-5 3/16"]	2 [1/16"]	50 [1 15/16"]	452 [1'-5 3/16"]	3 [1/8"]
P16	OB16	8	53 [2 1/8"]	373 [1'-2 1/16"]	448 [1'-5 5/8"]	4 [3/16"]	49 [1 5/16"]	446 [1'-5 9/16"]	7 [1/4"]
P21	OB21	1	57 [2 1/4"]	429 [1'-4 7/8"]	504 [1'-7 3/16"]	12 [1/2"]	46 [1 3/16"]	498 [1'-7 5/8"]	20 [1 3/16"]
P22	OB22	1	57 [2 1/4"]	407 [1'-4"]	482 [1'-7"]	12 [1/2"]	46 [1 3/16"]	476 [1'-6 3/4"]	20 [1 3/16"]
P23	OB23	1	57 [2 1/4"]	384 [1'-3 3/8"]	459 [1'-6 1/16"]	12 [1/2"]	46 [1 3/16"]	453 [1'-5 3/16"]	20 [1 3/16"]

OFFSET BLOCK ~ RAIL MTG. DIMENSIONS $\triangle 1$

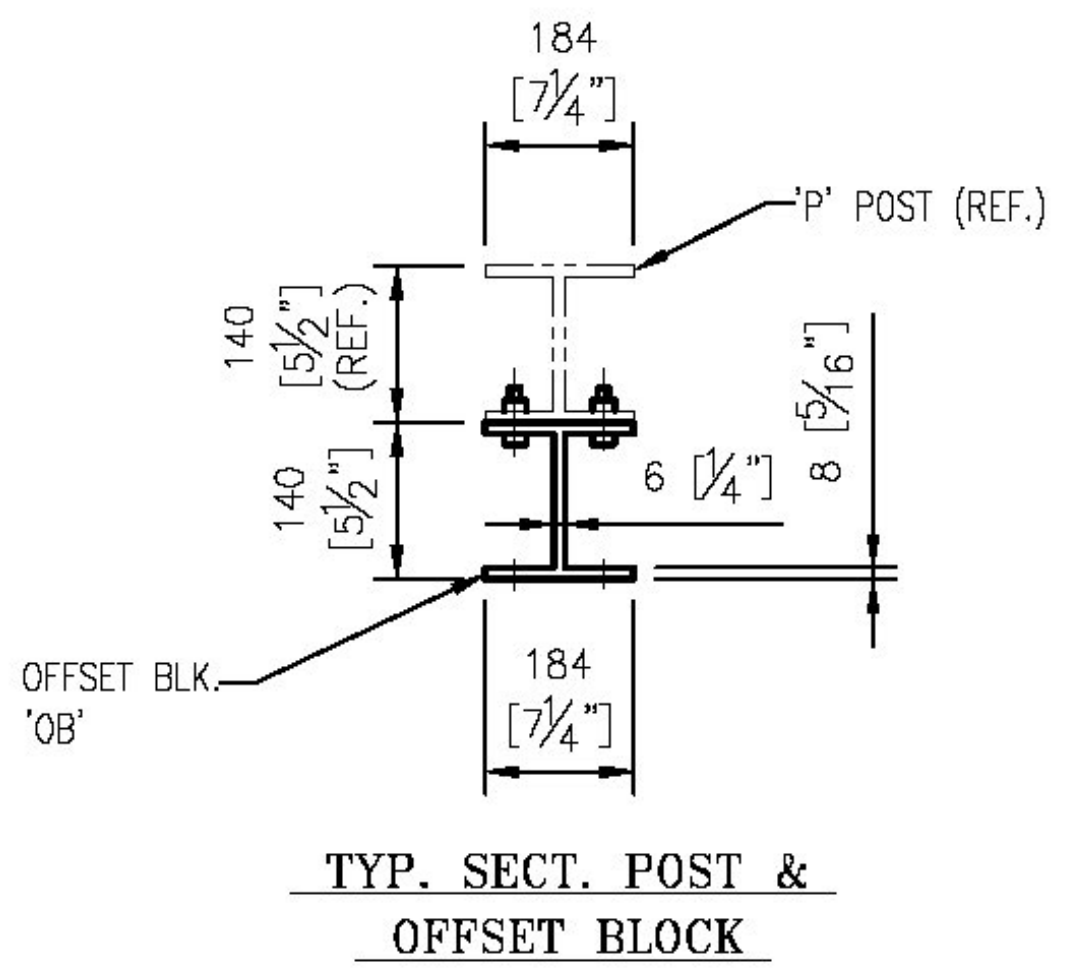
POST No.	OFFSET BLOCK	G	H	J	K
P5	OB5	31 [1 1/4"]	404 [1'-3 7/8"]	28 [1 1/8"]	398 [1'-3 1/16"]
P6	OB6	31 [1 1/4"]	381 [1'-3"]	28 [1 1/8"]	375 [1'-2 3/4"]
P7	OB7	31 [1 1/4"]	358 [1'-2 7/8"]	28 [1 1/8"]	353 [1'-1 7/8"]
P8	OB8	30 [1 3/16"]	350 [1'-1 3/4"]	29 [1 1/8"]	349 [1'-1 3/4"]

NOTE:
PRIMARY DIMENSIONS ARE METRIC
UNITS IN MM. DIMENSIONS SHOWN
[] THUS ARE THE ENGLISH
CONVERSION.

OFFSET BLOCK ~ RAIL MTG. DIMENSIONS $\triangle 1$

POST No.	OFFSET BLOCK	G	H	J	K
P13	OB13	30 [1 3/16"]	402 [1'-3 3/16"]	29 [1 1/8"]	399 [1'-3 1/16"]
P14	OB14	30 [1 3/16"]	379 [1'-2 5/16"]	29 [1 1/8"]	376 [1'-2 3/16"]
P15	OB15	30 [1 3/16"]	357 [1'-2 1/16"]	29 [1 1/8"]	354 [1'-1 5/16"]
P16	OB16	29 [1 1/16"]	350 [1'-1 3/4"]	28 [1 1/8"]	349 [1'-1 3/4"]
P21	OB21	31 [1 1/4"]	405 [1'-3 15/16"]	28 [1 1/8"]	399 [1'-3 1/16"]
P22	OB22	31 [1 1/4"]	382 [1'-3 1/16"]	28 [1 1/8"]	376 [1'-2 3/16"]
P23	OB23	31 [1 1/4"]	359 [1'-2 7/8"]	28 [1 1/8"]	354 [1'-1 5/16"]

NOTE:
4 CLAMPING BARS CB-03-A
(#19447) PER POSTS P5-P8,
P13-P16 & P21-P23 w/
M13 x 25 S.S. BOLT 'FB1'
[1/2" x 1" LG]
27 O.D. x 13 I.D. x 2 ALUM THK
[1 1/16" O.D. x 1/2" I.D. x 1/16"]
WASHER 'FW1' (#15280 &
#19404) (16 PER POST)



ANODIZED
(SEE NOTES ON LB1)

Vermont Agency of Transportation
RECEIVED
CK'D BY GFR OK'D BY _____
03/29/2012
RESUBMIT _____ APPROVED X _____
BY C. CARLSON DATE 03/30/2012

REV.	DESCRIPTION	BY	DATE
2	REVISED DIMENSION PER APPROVER MARKUP	CMS	03/29/12
1	REVISED ALL POST HGT'S. PER APPROVERS COMMENTS	CMS	03/23/12

ITEM No: 621.745

APPROVED: _____ REC'D APPROVAL _____
DRAWING _____

L.B. FOSTER COMPANY
1016 GREENTREE ROAD
PITTSBURGH, PENNSYLVANIA 15220

FOR: F. R. LAFAYETTE, INCORPORATED
VERMONT AGENCY OF TRANSPORTATION
COUNTY OF WINDHAM - TOWN OF NEWFANE - PROJ. #BRF 0106(3)S
3L ALUM APPROACH RAILING - RTE: TH2 CLASS 2 (MAJOR COLLECTOR)
BRIDGE 14 OVER MARLBORO BRANCH - OFFSET BLOCK DETAILS

MADE CMS DATE 02/02/12 JOB No. AR0720 CUST. No. _____
CHECK Dd DATE 02/13/12 DRAWING LB9 REV. No. 2