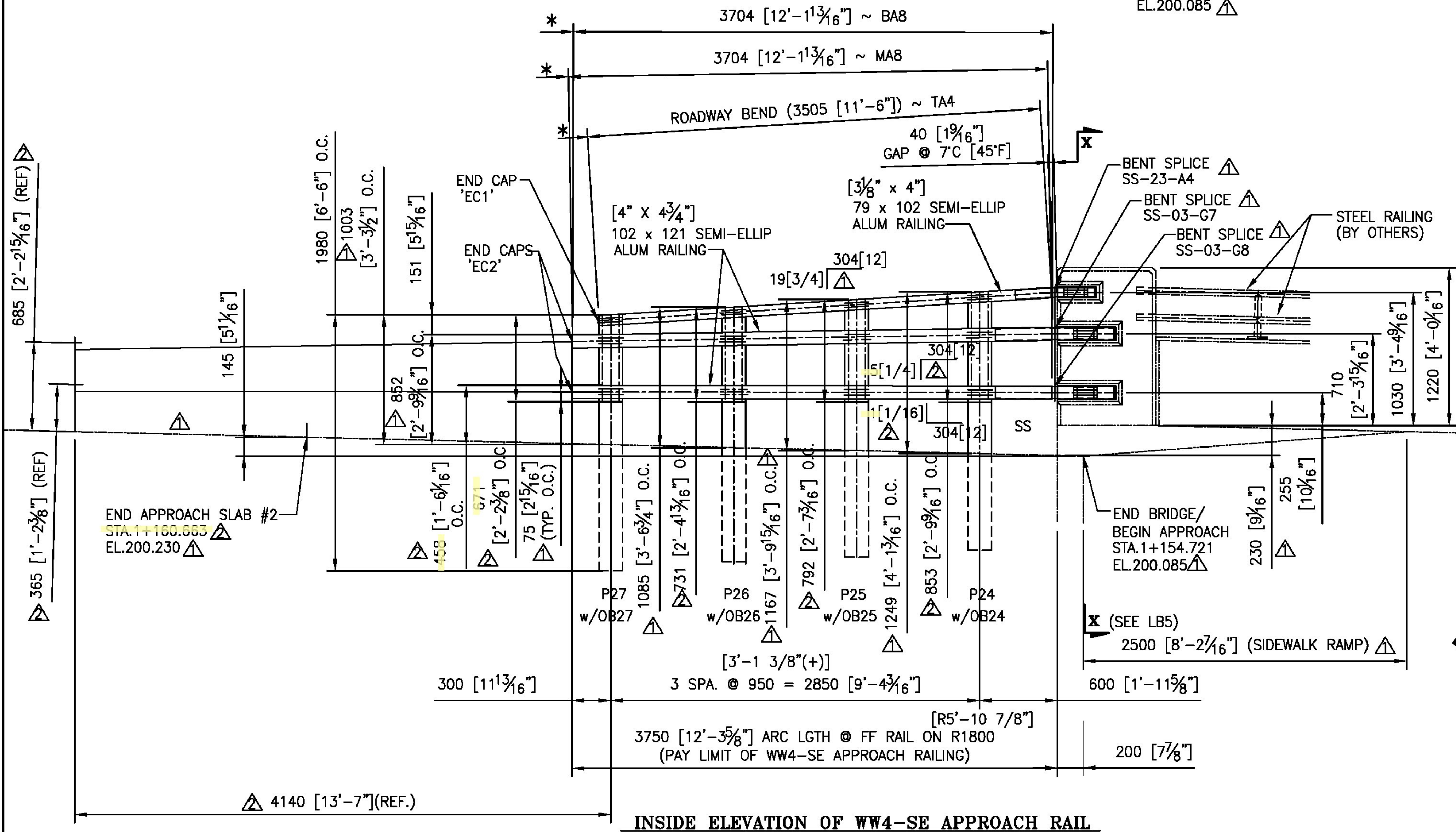
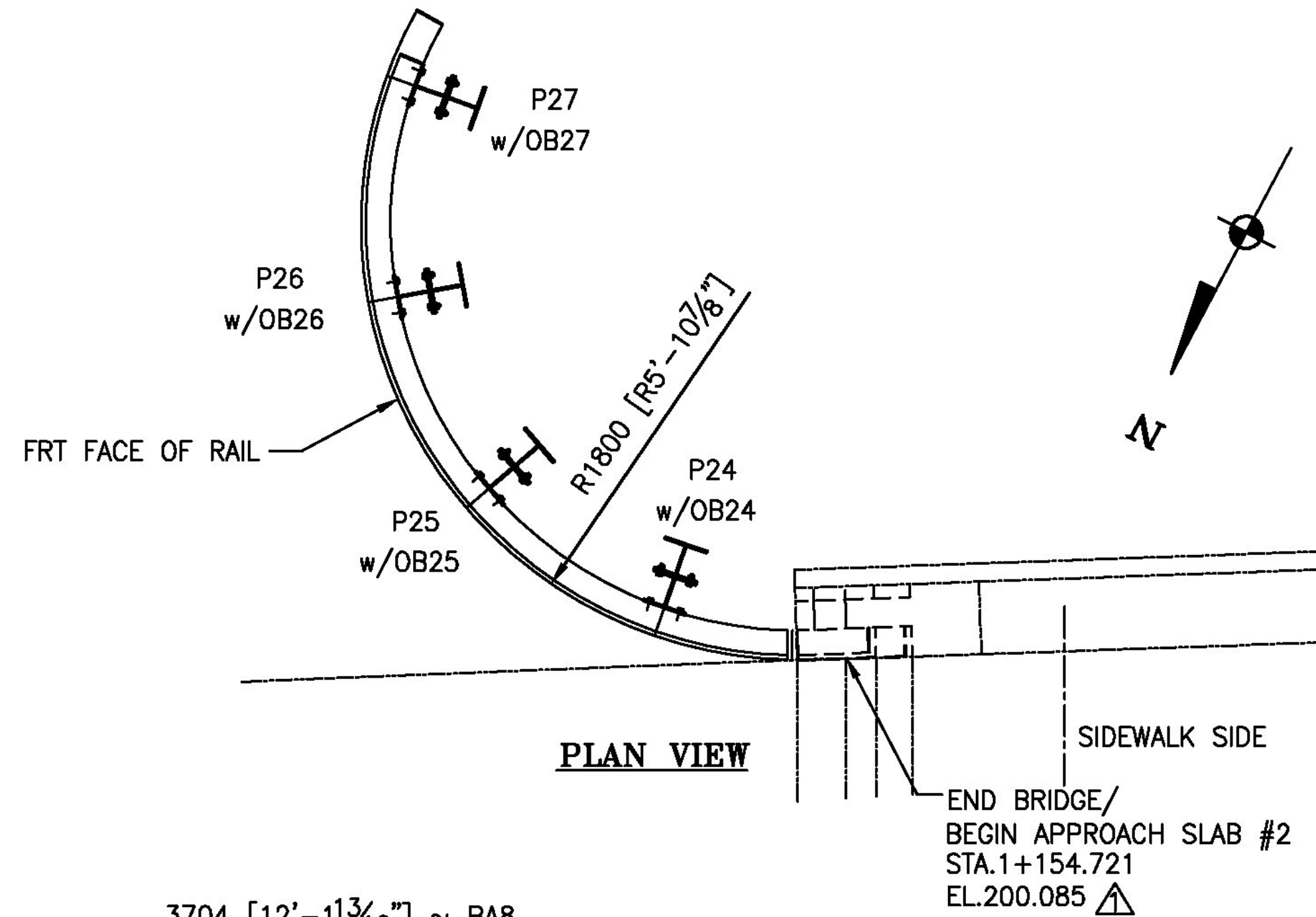


H = HOLE SIDE
 SS = SHORT SLOTTED SIDE
 LS = LONG SLOTTED SIDE



NOTE:
 PRIMARY DIMENSIONS ARE METRIC
 UNITS IN MM. DIMENSIONS SHOWN
 [] THUS ARE THE ENGLISH
 CONVERSION.

Vermont Agency of Transportation
RECEIVED
 CK'D BY GFR OK'D BY _____
 03/29/2012
 RESUBMIT _____ APPROVED X _____
 BY C. CARLSON DATE 03/30/2012

- NOTE:
- THIS CONTRACT IS BASED UPON THE CONTRACTOR SETTING AND SPACING THE ANCHOR BOLTS TO THE MEASUREMENTS SHOWN ON THE APPROVED SHOP DRAWINGS. THE L.B. FOSTER CO. WILL NOT BE RESPONSIBLE FOR WORK NECESSITATED BY ANY OTHER SETTING AND SPACING.
 - THIS DRAWING IS NOT TO SCALE.
 - LENGTH OF APPROACH RAILING ON THIS SHEET IS 37.5 M PAY LENGTH. [12.3 LF]
 - POST SPACING IS MEASURED ALONG FF OF RAILING.
 - SPLICE GAP AT SLEEVE = 20 [3/4"] TYP.
 - * RAIL LENGTHS DO NOT INCLUDE GAPS.
 - COMPENSATION FOR VERTICAL CURVE IS INCLUDED IN RAIL LGTHS.

ANODIZED
 ● FOR SPECS SEE LB1

ITEM #621.745

LB Foster
 Fabricated Bridge Products

L.B. FOSTER COMPANY
 1016 GREENTREE RD.
 PITTSBURGH, PA 15220

FOR: F. R. LAFAYETTE, INCORPORATED
 VERMONT AGENCY OF TRANSPORTATION
 COUNTY OF WINDHAM - TOWN OF NEWFANE - PROJ. #BRF 0106(3)S
 3L ALUM APPROACH RAILING - RTE: TH2 CLASS 2 (MAJOR COLLECTOR)
 BRIDGE 14 OVER MARLBORO BRANCH - ELEVATION ~ WW4-SE RAILING

MADE CMS DATE 02/02/12 JOB NO. AR0720
 CHECK Dd DATE 02/13/12 DRAWING LB4

REV. NO. 2

REV.	DESCRIPTION	BY	DATE
△	REVISED PER APPROVER MARKUPS	CMS	03/29/12
△	REVISED PER APPROVER MARKUPS	CMS	03/21/12