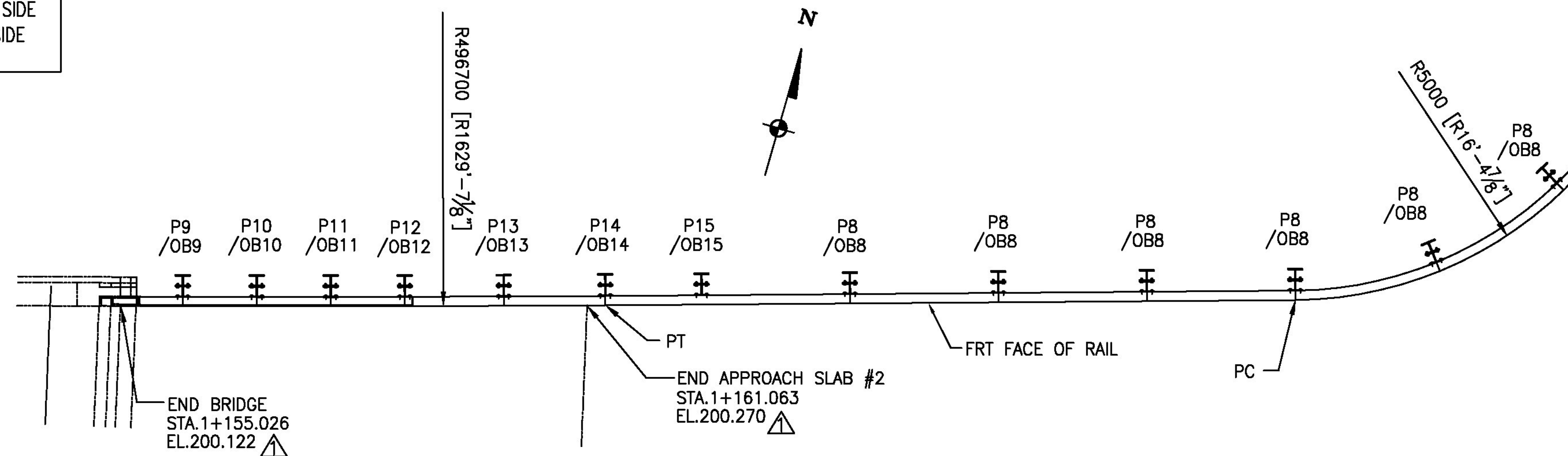
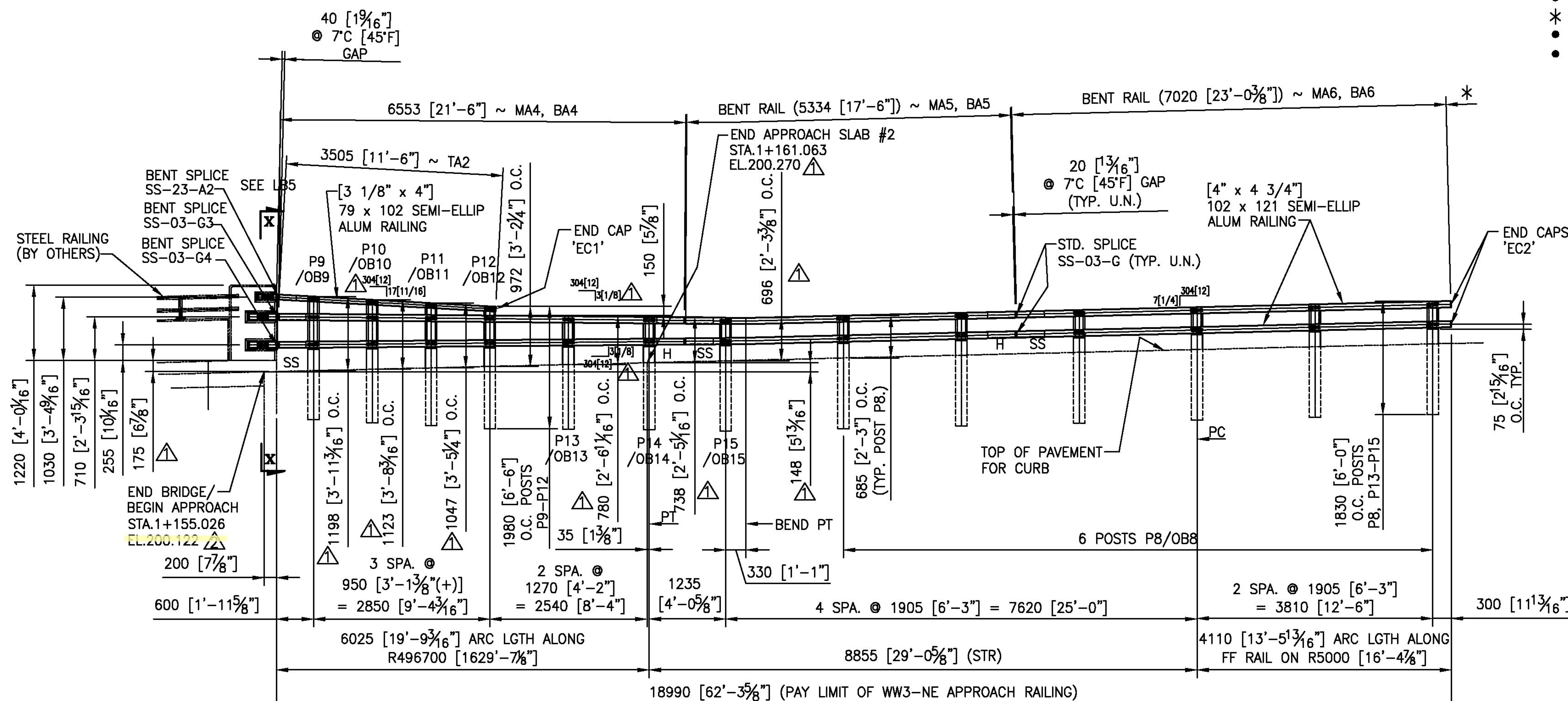


H = HOLE SIDE
 SS = SHORT SLOTTED SIDE
 LS = LONG SLOTTED SIDE



PLAN VIEW ~ CURBSIDE

- NOTE:
- THIS CONTRACT IS BASED UPON THE CONTRACTOR SETTING AND SPACING THE ANCHOR BOLTS TO THE MEASUREMENTS SHOWN ON THE APPROVED SHOP DRAWINGS. THE L.B. FOSTER CO. WILL NOT BE RESPONSIBLE FOR WORK NECESSITATED BY ANY OTHER SETTING AND SPACING.
 - THIS DRAWING IS NOT TO SCALE.
 - LENGTH OF APPROACH RAILING ON THIS SHEET IS 18.99 M [62.3 LF] PAY LENGTH.
 - POST SPACING IS MEASURED ALONG FF OF RAILING.
 - SPLICE GAP AT SLEEVE = 20 [13/16"] TYP. U.N.
 - * RAIL LENGTHS DO NOT INCLUDE GAPS.
 - COMPENSATION FOR VERTICAL CURVE IS INCLUDED IN RAIL LGTHS.
 - RAILS ON RADII OVER 267700 [875'-0"] TO BE SPRUNG IN THE FIELD.



INSIDE ELEVATION OF WW3-NE APPROACH RAIL

Vermont Agency of Transportation
RECEIVED

CK'D BY GFR OK'D BY _____

03/29/2012

RESUBMIT _____ APPROVED X
 BY C. CARLSON DATE 03/30/2012

NOTE:
 PRIMARY DIMENSIONS ARE METRIC
 UNITS IN MM. DIMENSIONS SHOWN
 [] THUS ARE THE ENGLISH
 CONVERSION.

ITEM #621.745

LB Foster
 Fabricated Bridge Products
L.B. FOSTER COMPANY
 1016 GREENTREE RD.
 PITTSBURGH, PA 15220

FOR: F. R. LAFAYETTE, INCORPORATED
 VERMONT AGENCY OF TRANSPORTATION
 COUNTY OF WINDHAM - TOWN OF NEWFANE - PROJ. #BRF 0106(3)S
 3L ALUM APPROACH RAILING - RTE: TH2 CLASS 2 (MAJOR COLLECTOR)
 BRIDGE 14 OVER MARLBORO BRANCH - ELEVATION ~ WW3-NE RAILING

△	REVISED PER APPROVER MARKUPS	CMS	03/29/12
△	REVISED PER APPROVER MARKUPS	CMS	03/21/12
REV.	DESCRIPTION	BY	DATE

MADE CMS DATE 02/03/12 JOB NO. ARO720
 CHECK Dd DATE 02/13/12 DRAWING LB2
 REV. NO. 2

ANODIZED
 ● SEE LB1 FOR SPECS