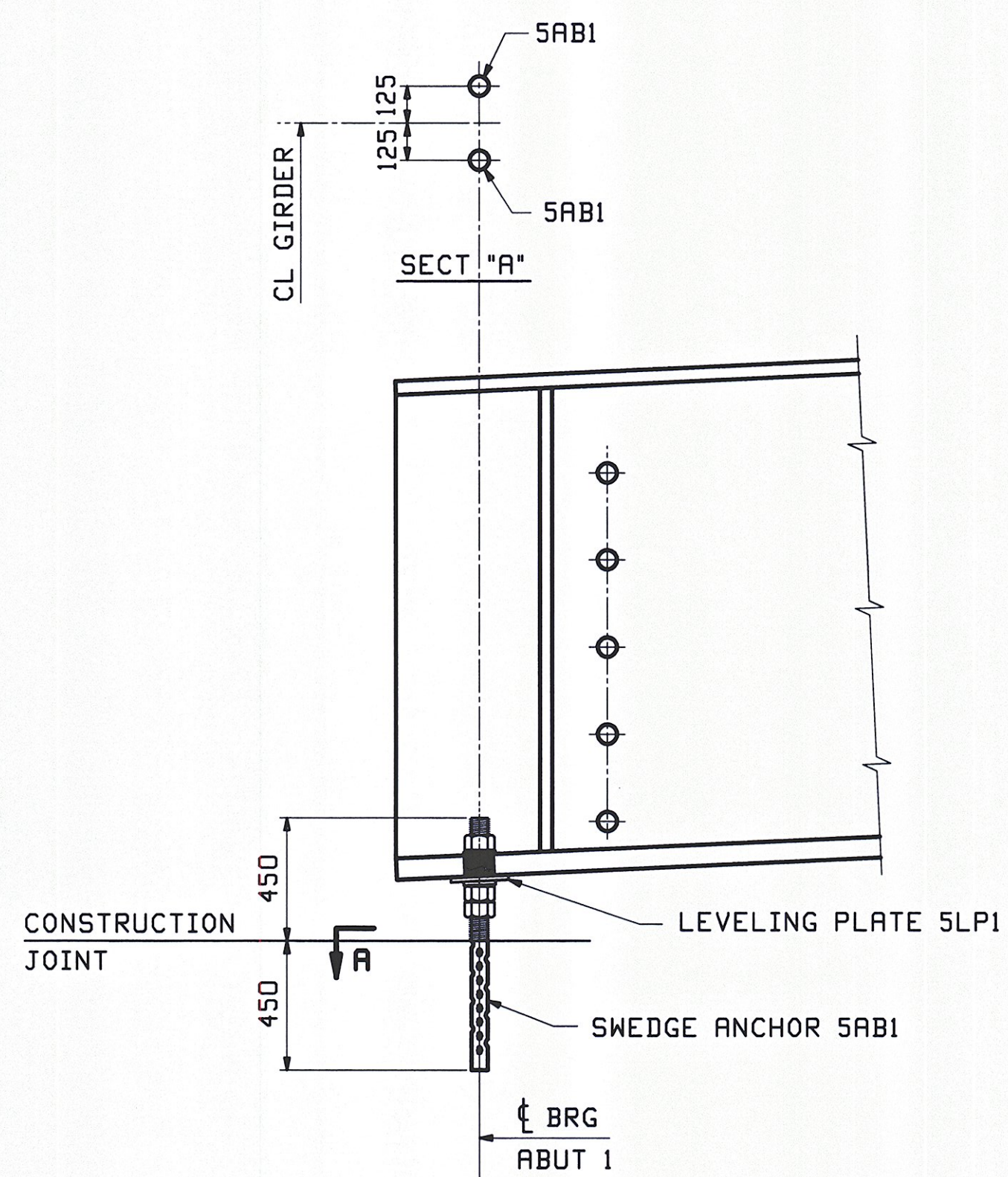


**FRAMING PLAN**



**TYPICAL GIRDER END VIEW @ ABUT 1**

FIELD BOLT LIST				A325 Type 3 BOLTS				WASHER CODES	
LINE	NO. REQ'D.	BOLT DIA.	BOLT LEN.	BOLTS / CONN.	GRIP	THICKNESS OF PCS. CONNECTED	WASHER CODE	PIECES CONNECTED AND REMARKS	
1									
2								CROSSFRAMES	
3	180	7/8	2 1/4	6	30	23	10	13	1 TOP GUSSET ~ INT STIFFENER
4	300	7/8	2 1/4	10	30	23	10	13	1 BTM GUSSET ~ INT STIFFENER
5									

1: 1 Hard Flat Washer

FIELD BOLT SUMMARY			2% + 3 ADDED, MIN. 3 EXTRA			REMARKS
LINE	NO. OF BOLTS	BOLT DIA.	TYPE	BOLT LEN.	ACTUAL COUNT	
1	493	7/8	A325 Type 3	2 1/4	480	
2						
3	493		Hard Flat Washers	for 7/8" BOLT		
4						
5						
6						

10/26	REVISED PER COMMENTS	TJB	PCP		
0					11-30-11
REV. DATE	REMARKS	DWN	CHK	APVL	SHOP
MATERIAL:		SURFACE PREP. & PAINT:		HOLES:	
				SHOP BOLTS:	
DESCRIPTION: FRAMING PLAN & FIELD BOLTS					
CASCO BAY STEEL STRUCTURES, INC.					
1 WALLACE AVE.		PHONE (207) 780-6722		TENSOR 3080	
SOUTH PORTLAND, ME 04106		FAX. (207) 780-6726			
STRUCTURE: VT TH 2 over MARLBORO BRANCH			DRAWN: TJB	DATE: 10/11	
BRIDGE NO 14			CHKD: PCP	DATE: 10/14	
NEWFANE			JOB NO. DWG NO.		
County of Windham			508 E1		
LOCATION: Newfane			REV. 1		
PROJ NO. BRF 0106 (3)S					
CUSTOMER: VT AOT					

DEC 8 2011  
 Approved by: [Signature]  
 Approved by: [Signature]

1. All bolt diameters and lengths are shown in inches (english unit of measurement).  
 2. All grip values are shown in metric units.