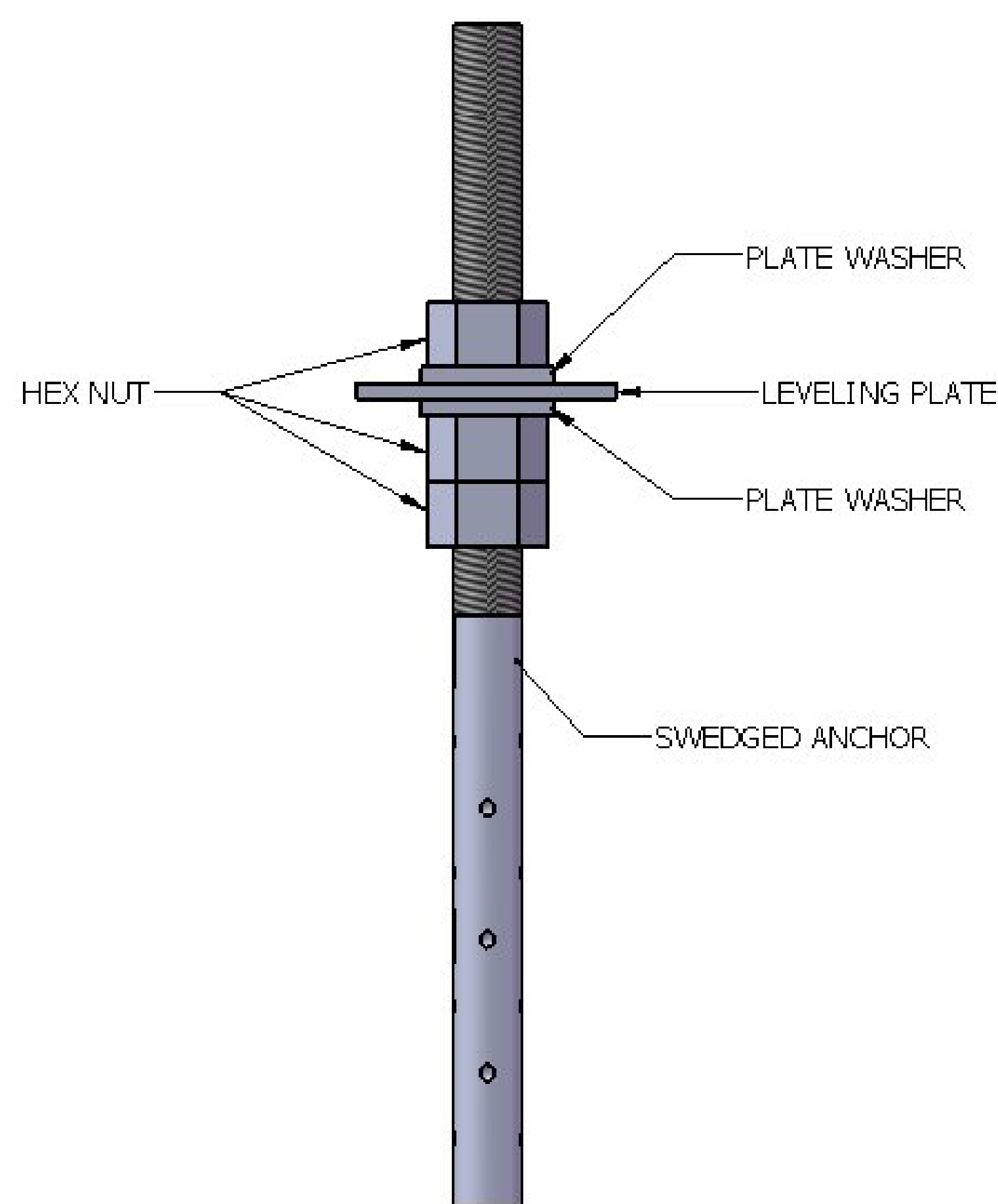
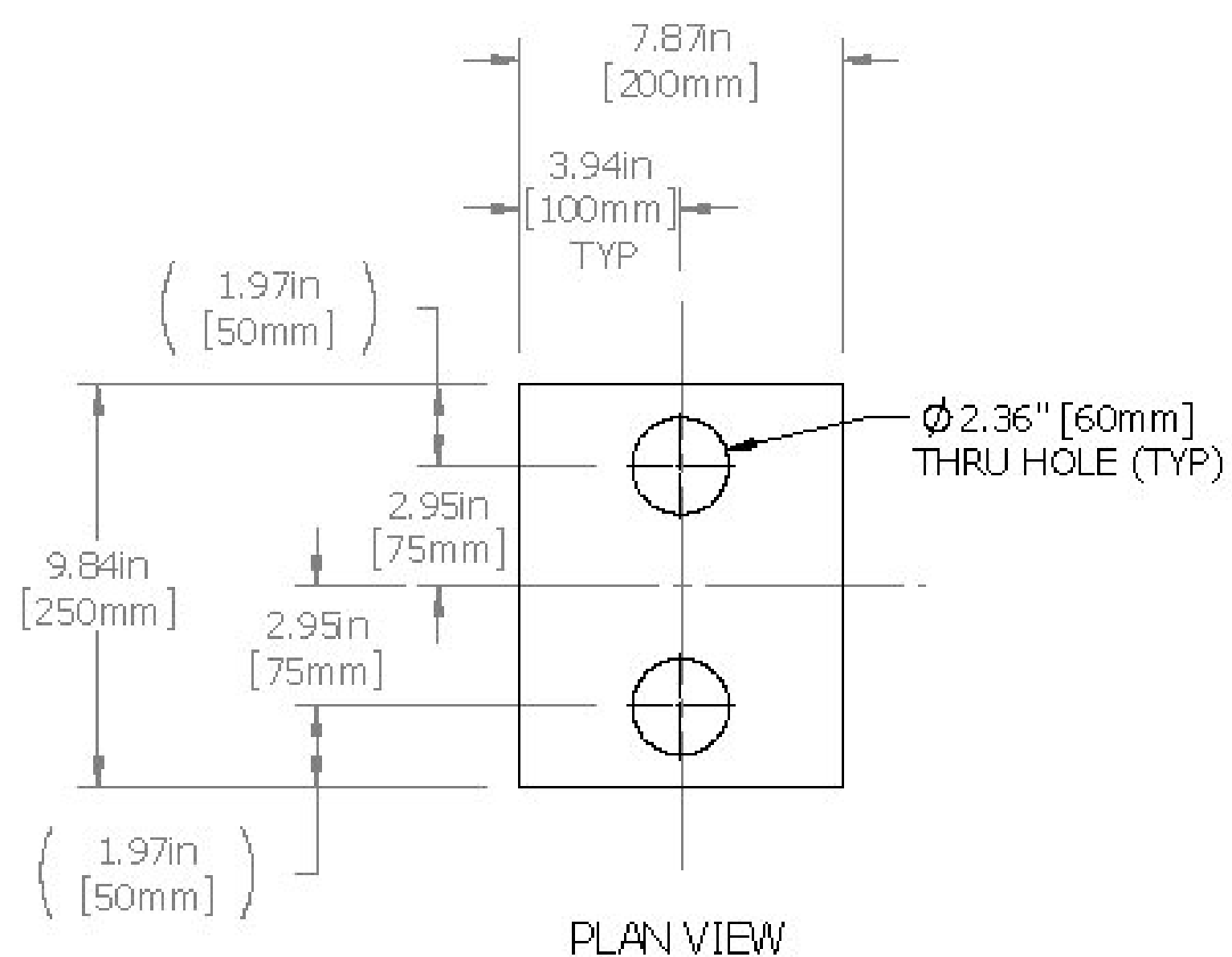


GENERAL NOTES:
SEE SHEET 1

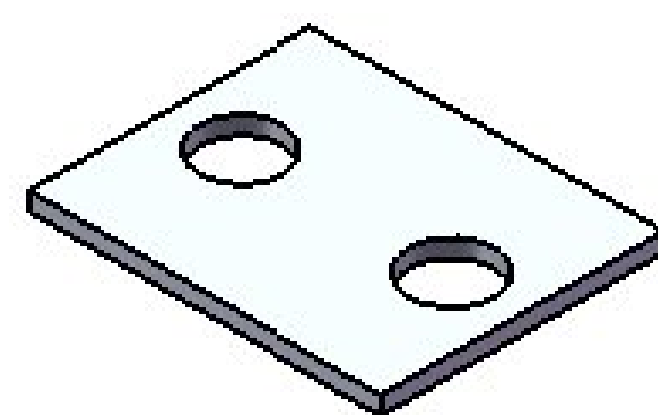
REVISIONS		
REV.	DESCRIPTION	DATE
A	SUBMIT	3/14/2012



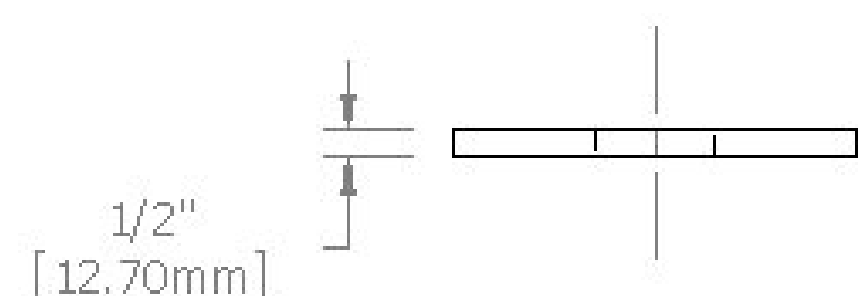
LEVELING PLATE ASSEMBLY
DETAIL
NTS
(FOR REFERENCE ONLY)



PLAN VIEW

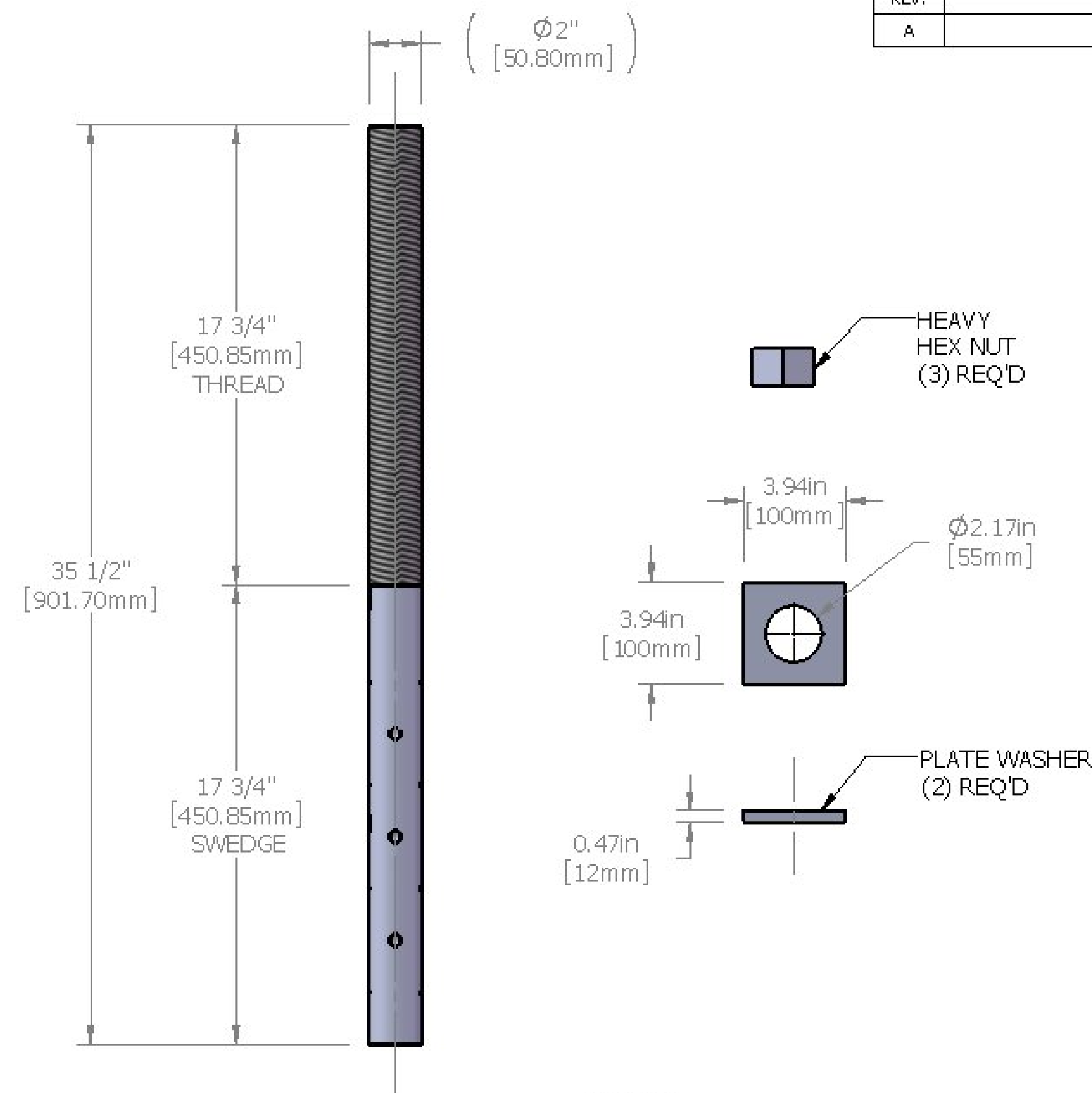


ISOMETRIC VIEW
NOT TO SCALE
(FOR REFERENCE ONLY)



ELEVATION VIEW

MK.03
LEVELING PLATE
ABUTMENT 1
(ITEM 506.55)
(4) REQ'D



MK.04
ANCHOR ASSEMBLY
2-4.5 UNC X 35 1/2" LONG ASTM F568M, CLASS 4.6 (ASTM A307)
SWEDGED ANCHOR W/THREE AASHTO M291 (ASTM A563) HEAVY
HEX NUTS AND TWO 12mm X 100mm X 100mm AASHTO M270M GR.
250 (ASTM A36) STEEL PLATE WASHERS - NO GALVANIZE REQ'D
@ABUTMENT 1
(ITEM 506.55)
(8) REQ'D

Vermont Agency of Transportation

RECEIVED

CK'D BY GFR OK'D BY CAM

03/15/2012

RESUBMIT _____ APPROVED X _____
BY C. CARLSON DATE 03/28/2012

PROJECT NO.
BRF 0106(3)S

Seismic Energy Products, L.P.

STRUCTURAL BEARINGS FOR BRIDGES & BUILDINGS
ATHENS, TX PHONE: 903-675-8571

BEARING ASSY FOR:
VERMONT AGENCY OF TRANSPORTATION

NEWFANE

CONTRACTOR:
RENAUD BROTHERS

DRAWN CWILLIAMS	DATE 3/12/12	PO # S. QTE
CHECKED	DATE	SO NO. & ST. 51251-R1 VT
REVIEWED KMOUSER	DATE 3/14/12	SHEET 3 OF 3