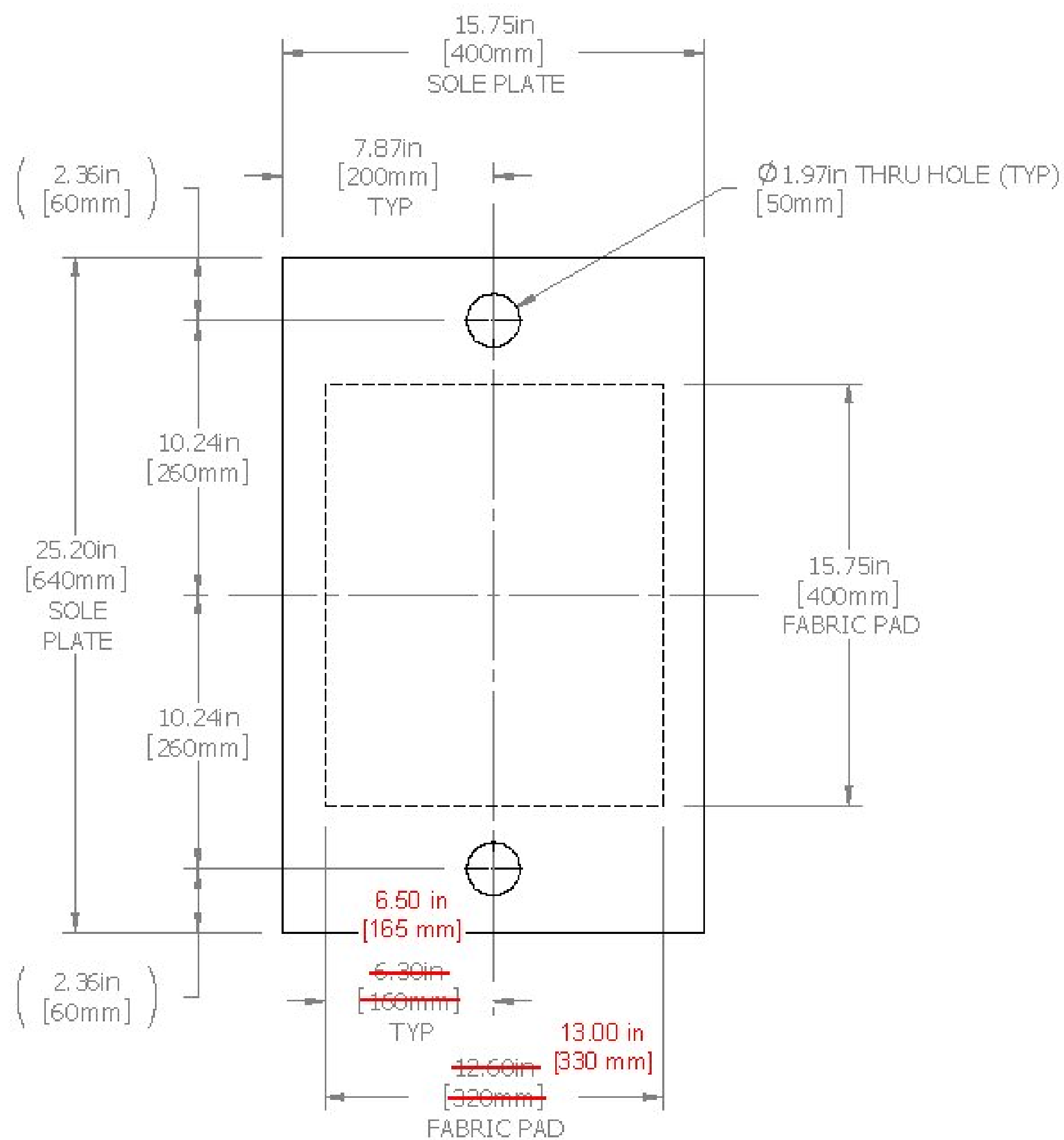
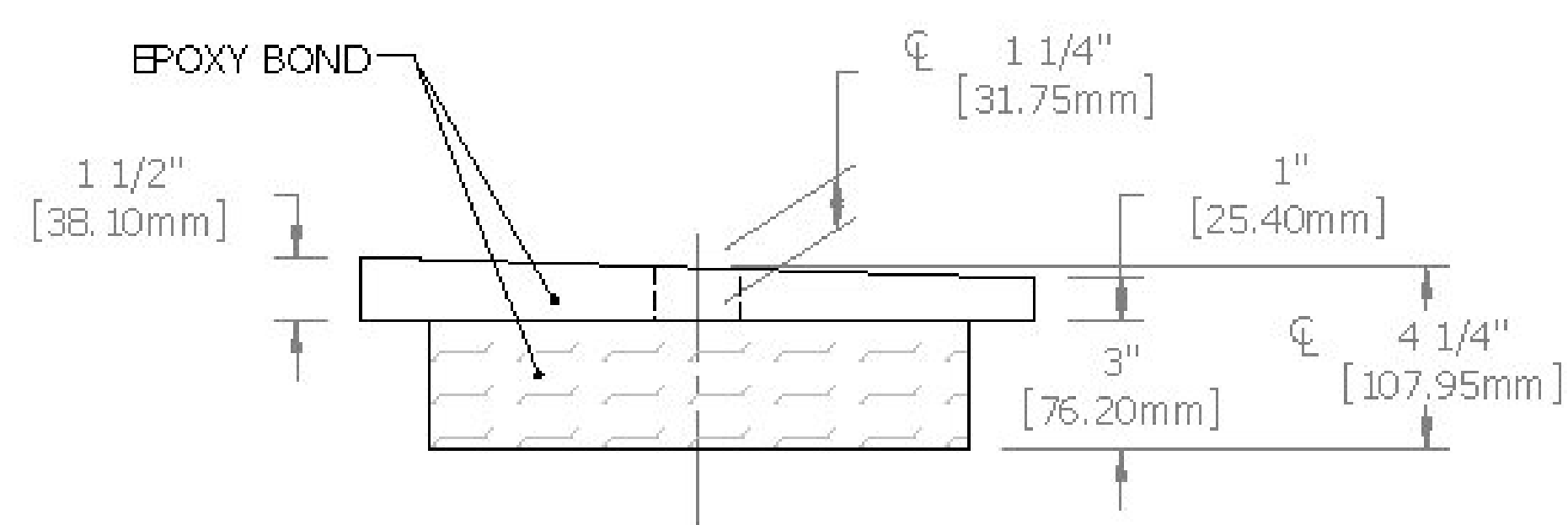


GENERAL NOTES:
SEE SHEET 1

REVISIONS		
REV.	DESCRIPTION	DATE
A	SUBMIT	3/14/2012



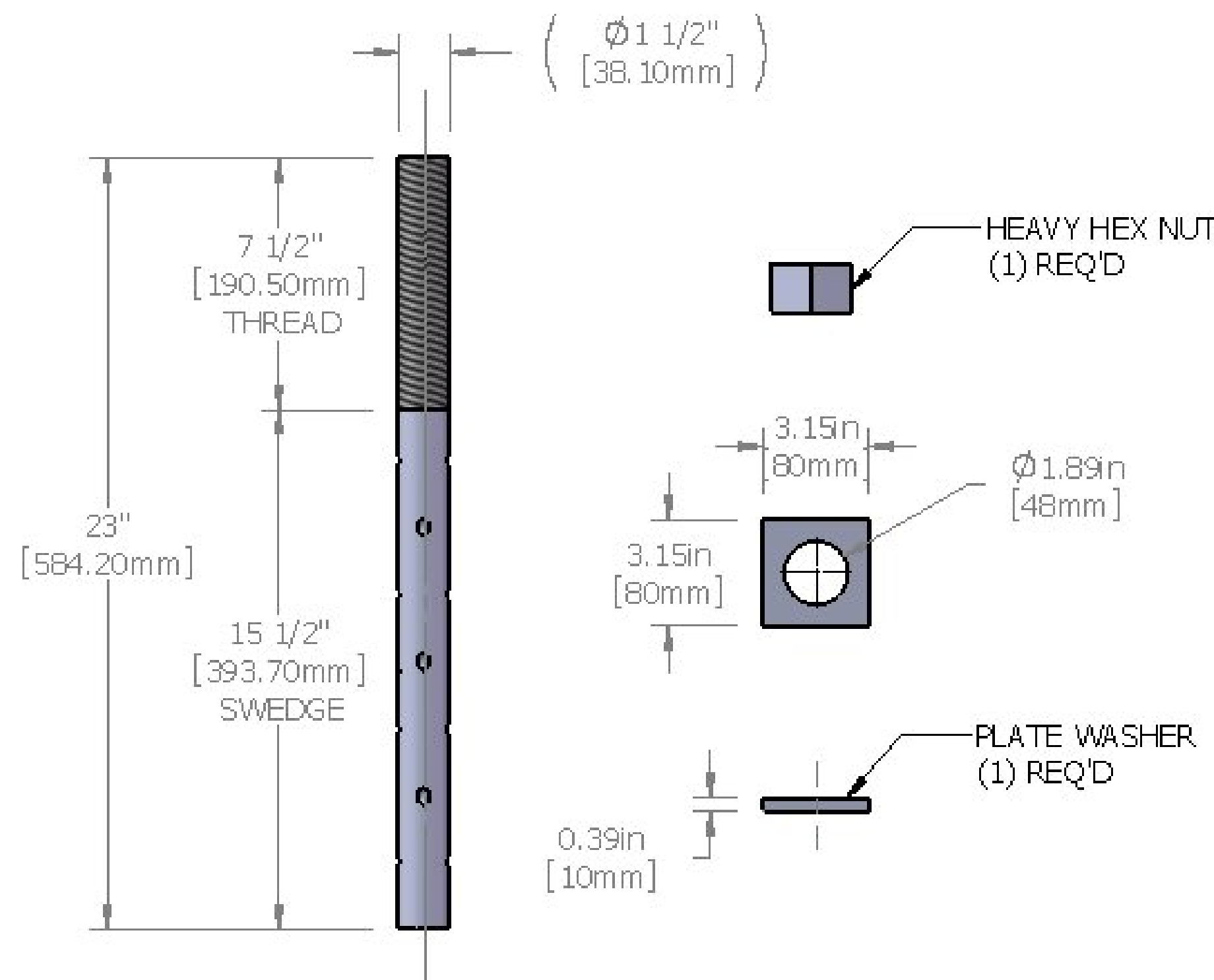
PLAN VIEW



ELEVATION VIEW

MK.01
BEARING DEVICE ASSEMBLY -
PREFORMED FABRIC PAD
@ ABUTMENT 2
(ITEM 531.10)
(4) REQ'D

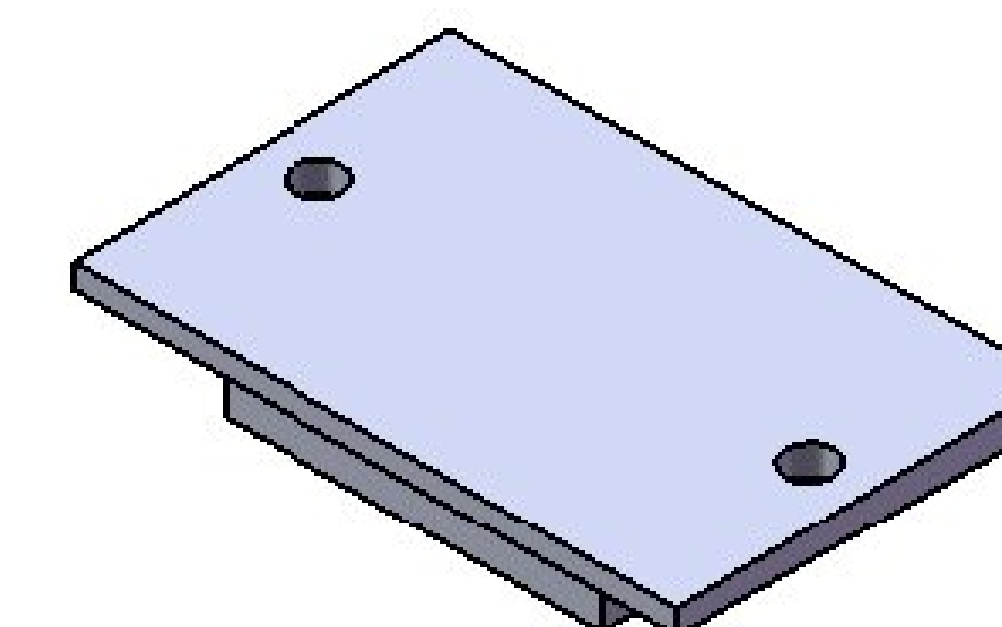
DESIGN VERTICAL LOAD: 1710 KN
DESIGN HORIZ. LOAD - MIN. 10% OF VERTICAL LOAD



MK.02
ANCHOR ASSEMBLY

1 1/2-6UNC X 23" LONG ASTM F568M, CLASS 4.6 (ASTM A307) SWEDGED ANCHOR W/ONE AASHTO M291 (ASTM A563) HEAVY HEX NUT AND ONE 10mm X 80mm X 80mm AASHTO M270M GR. 250 (ASTM A36) STEEL PLATE WASHER - ALL GALVANIZED
@ ABUTMENT 2
(ITEM 531.10)
(8) REQ'D

REVIEWER,
PLEASE CONFIRM 320mm FABRIC PAD DIMENSION AS SPELLED OUT IN "ABUTMENT BRG SIDE VIEW" IN CONTRACT PLANS (CENTER TO EDGE DISTANCE = 160mm) CONFLICTING CENTER TO EDGE DISTANCES SHOWN AS 115, IN SAME VIEW AND 165 IN "ABUTMENT 2 BRG PLAN DETAIL".



ISOMETRIC VIEW
NOT TO SCALE
(FOR REFERENCE ONLY)

Vermont Agency of Transportation
RECEIVED

CK'D BY GFR OK'D BY CAM

03/15/2012

RESUBMIT APPROVED AS NOTED

BY C. CARLSON DATE 03/28/2012

PROJECT NO.
BRF 0106(3)S

Seismic Energy Products, L.P.
STRUCTURAL BEARINGS FOR BRIDGES & BUILDINGS
ATHENS, TX PHONE: 903-675-8571

BEARING ASSY FOR:
VERMONT AGENCY OF TRANSPORTATION

NEWFANE

CONTRACTOR:
RENAUD BROTHERS

DRAWN CWILLIAMS	DATE 3/12/12	PO # S. QTE
CHECKED	DATE	SO NO. & ST. 51251-R1 VT
REVIEWED KMOUSER	DATE 3/14/12	SHEET 2 OF 3