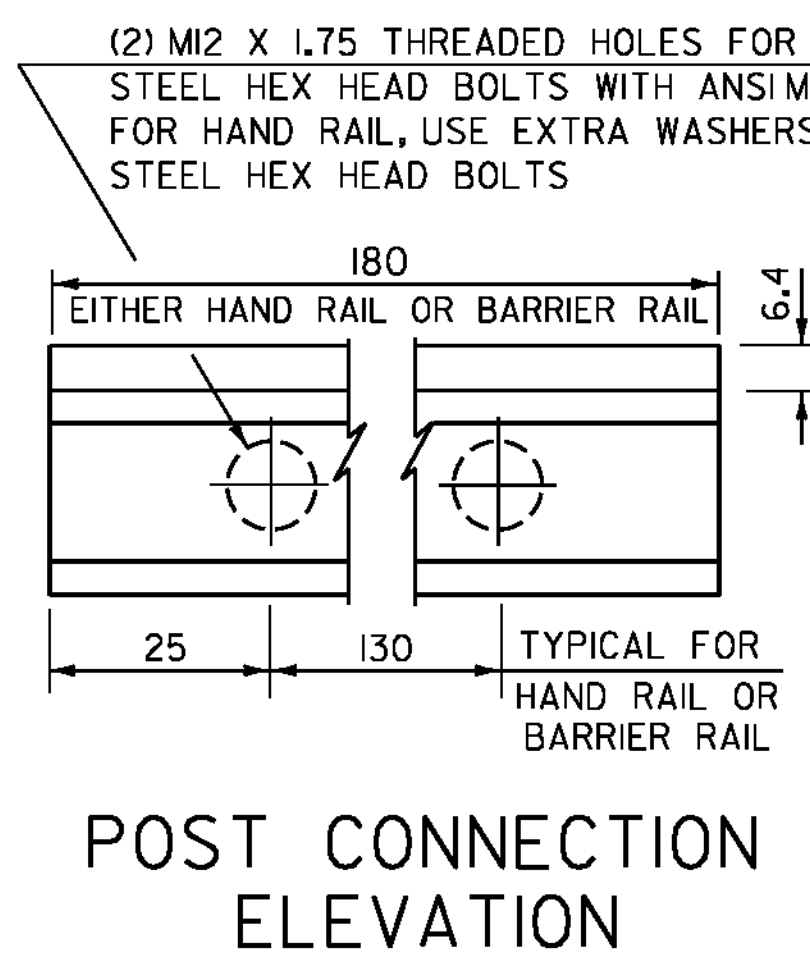
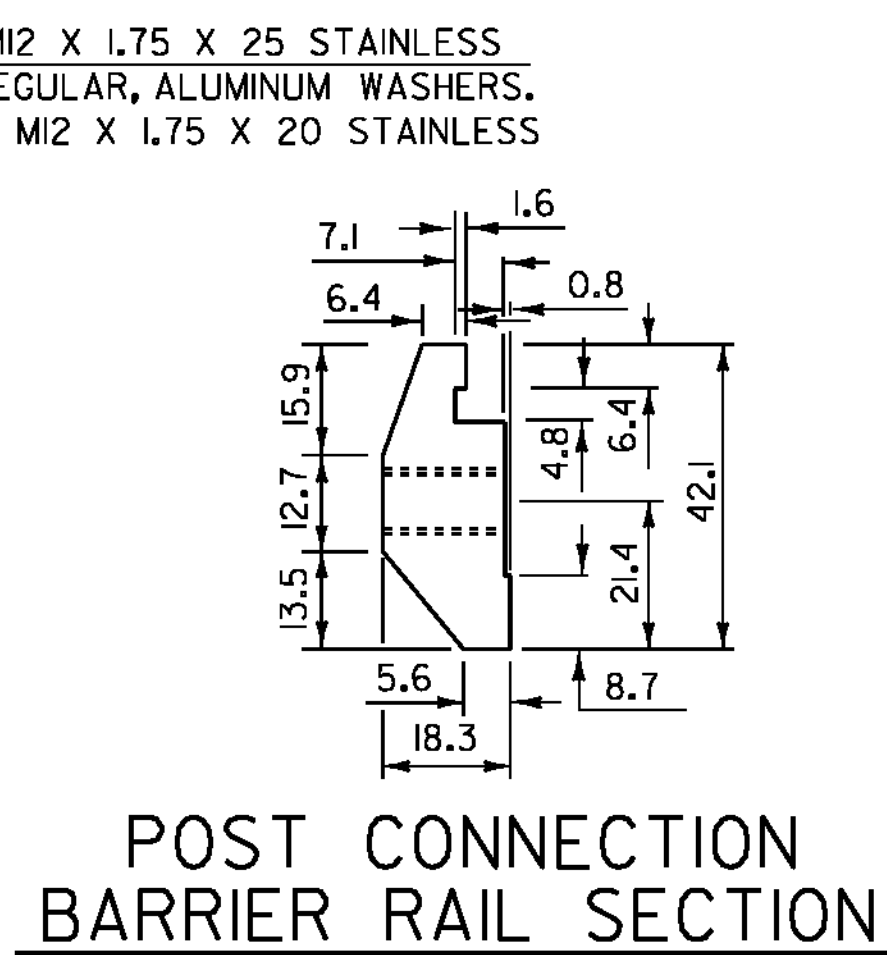


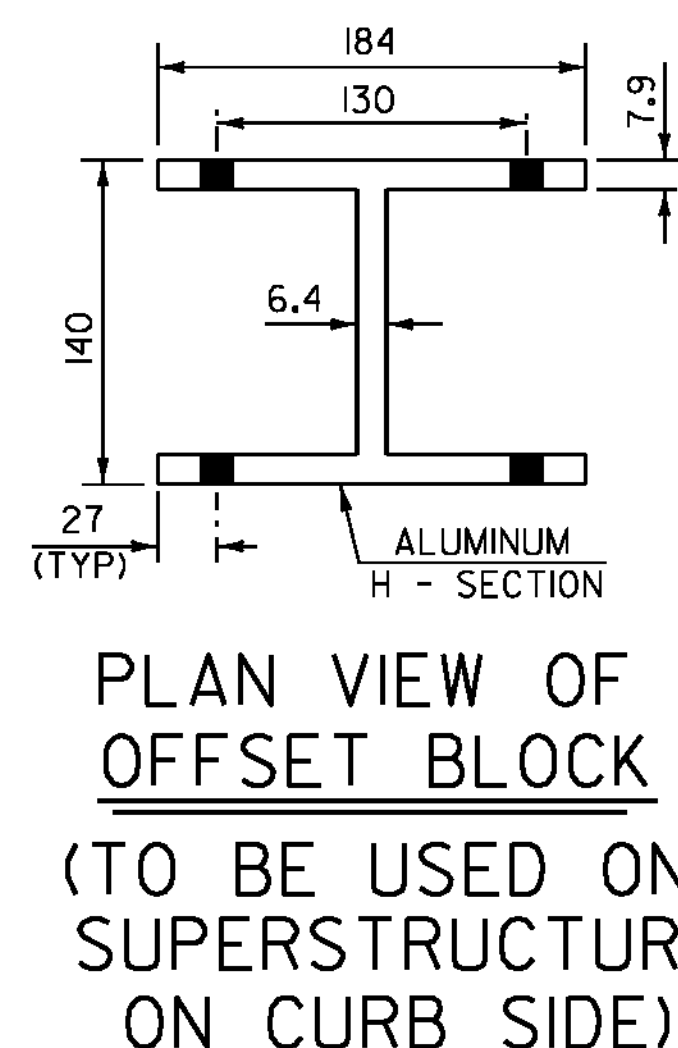
**POST CONNECTION
HAND RAIL SECTION**



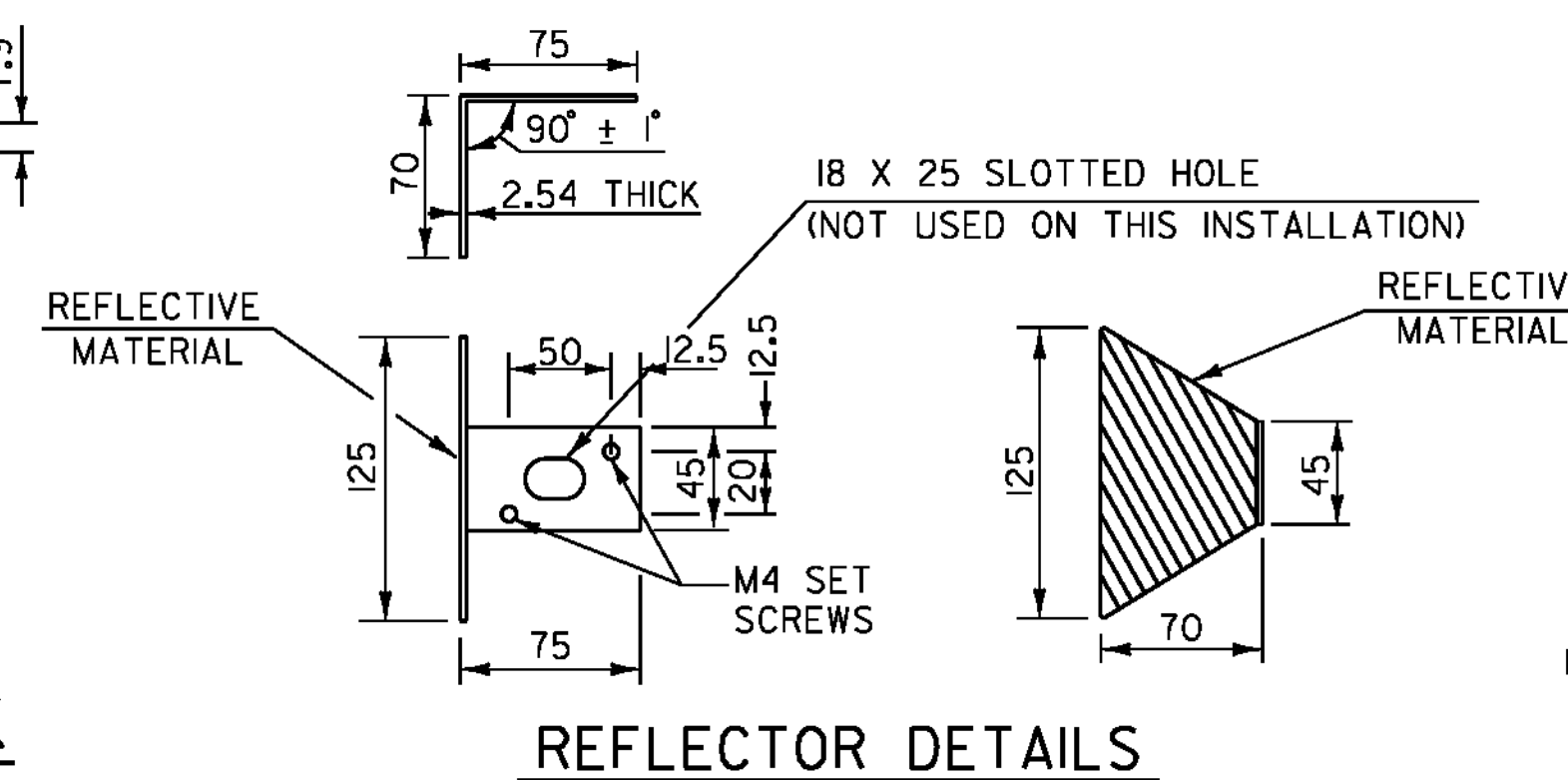
**POST CONNECTION
ELEVATION**



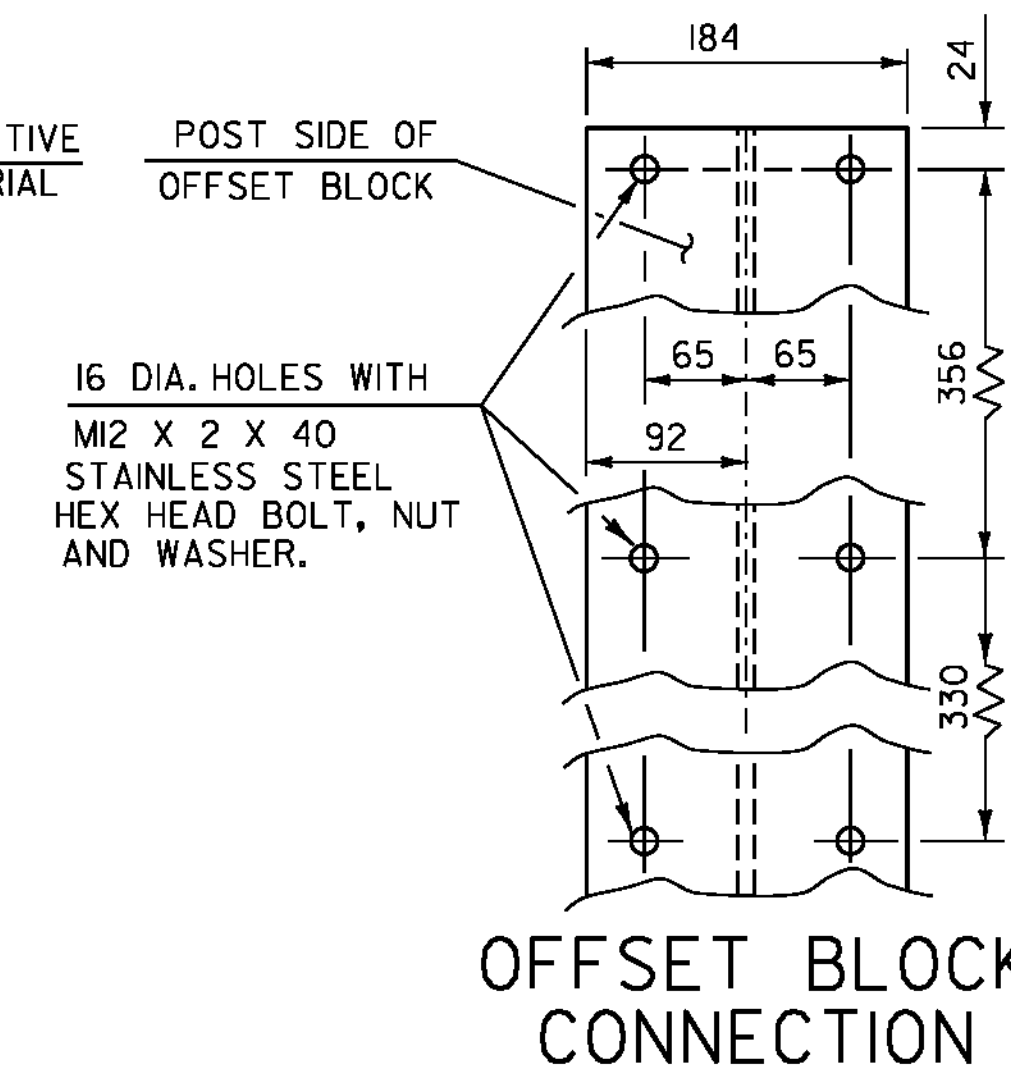
**POST CONNECTION
BARRIER RAIL SECTION**



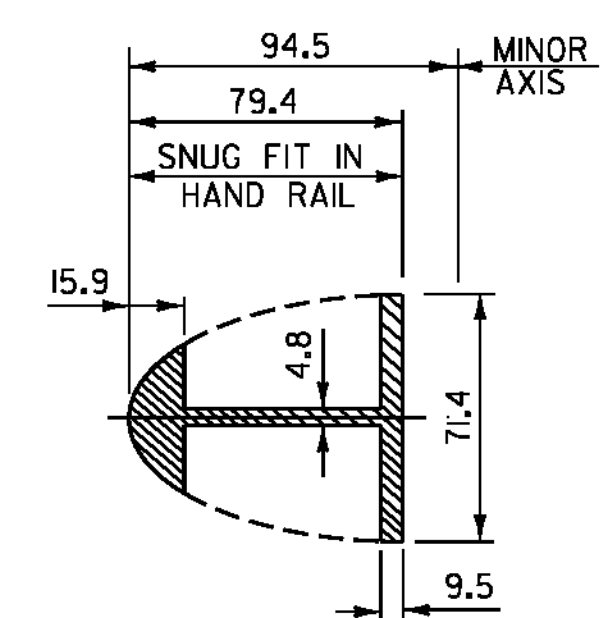
**PLAN VIEW OF
OFFSET BLOCK
(TO BE USED ON
SUPERSTRUCTURE
ON CURB SIDE)**



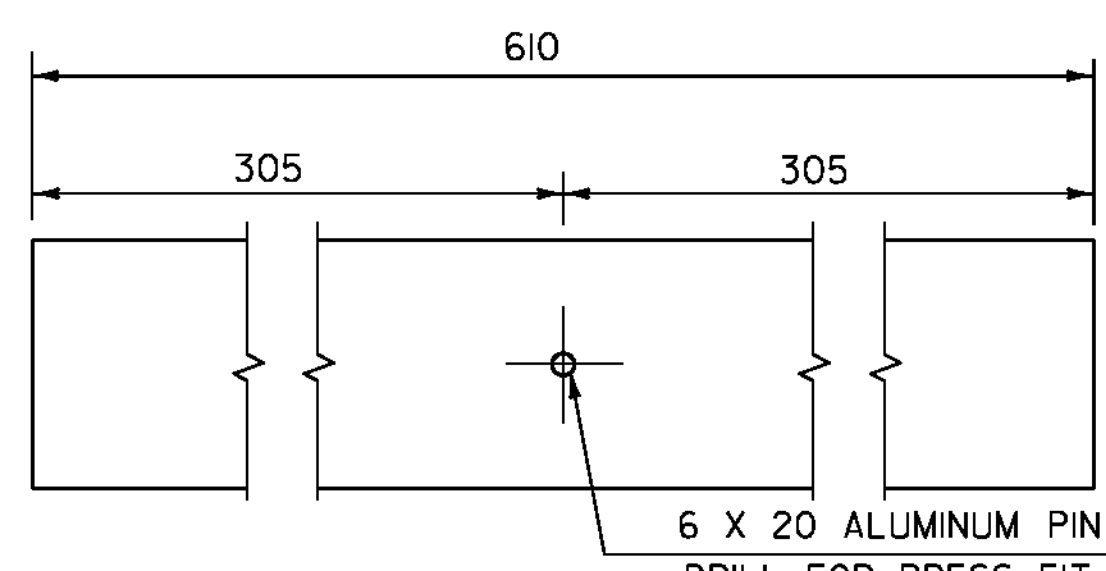
REFLECTOR DETAILS



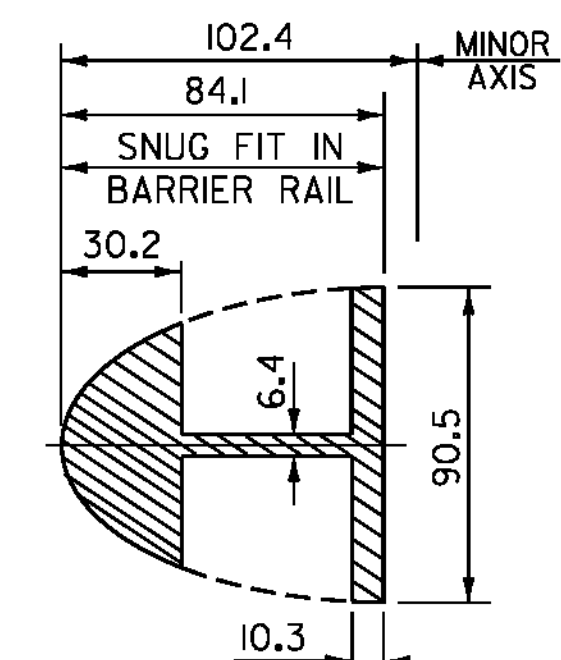
**OFFSET BLOCK
CONNECTION**



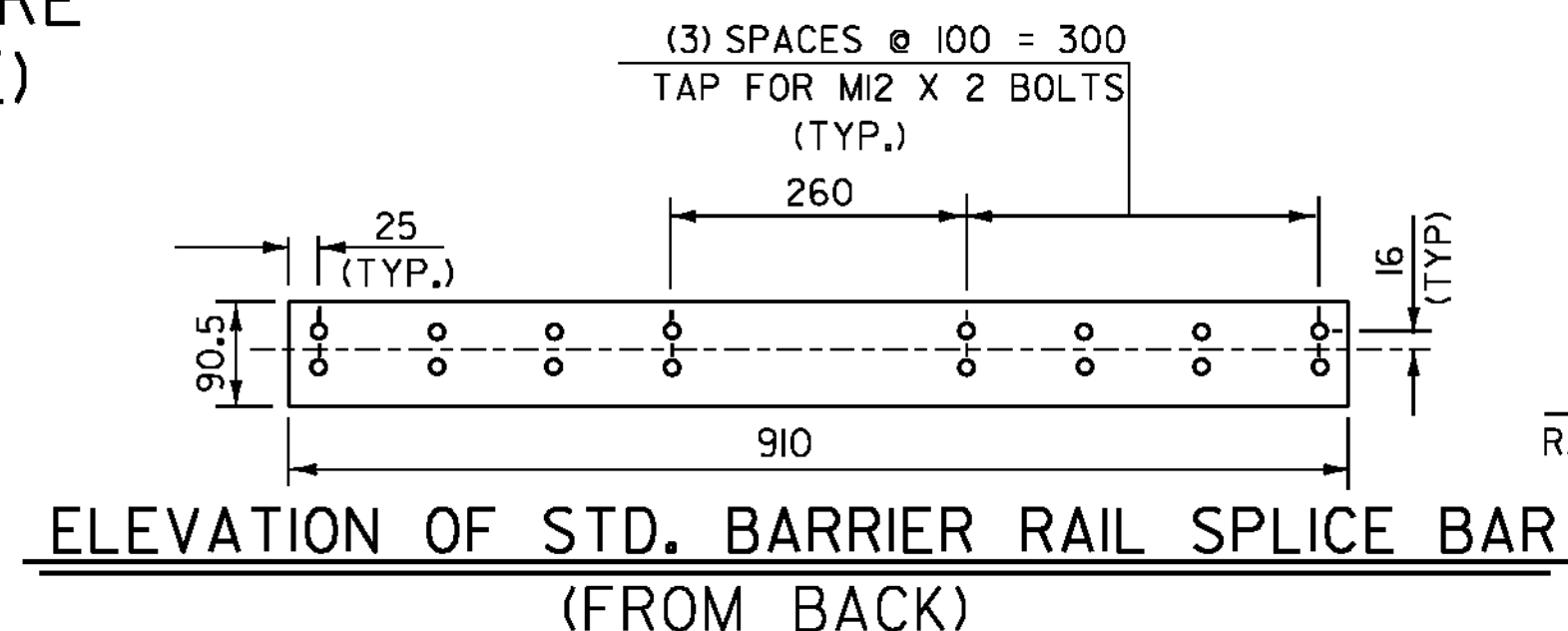
**HAND RAIL
SPLICE SECTION**



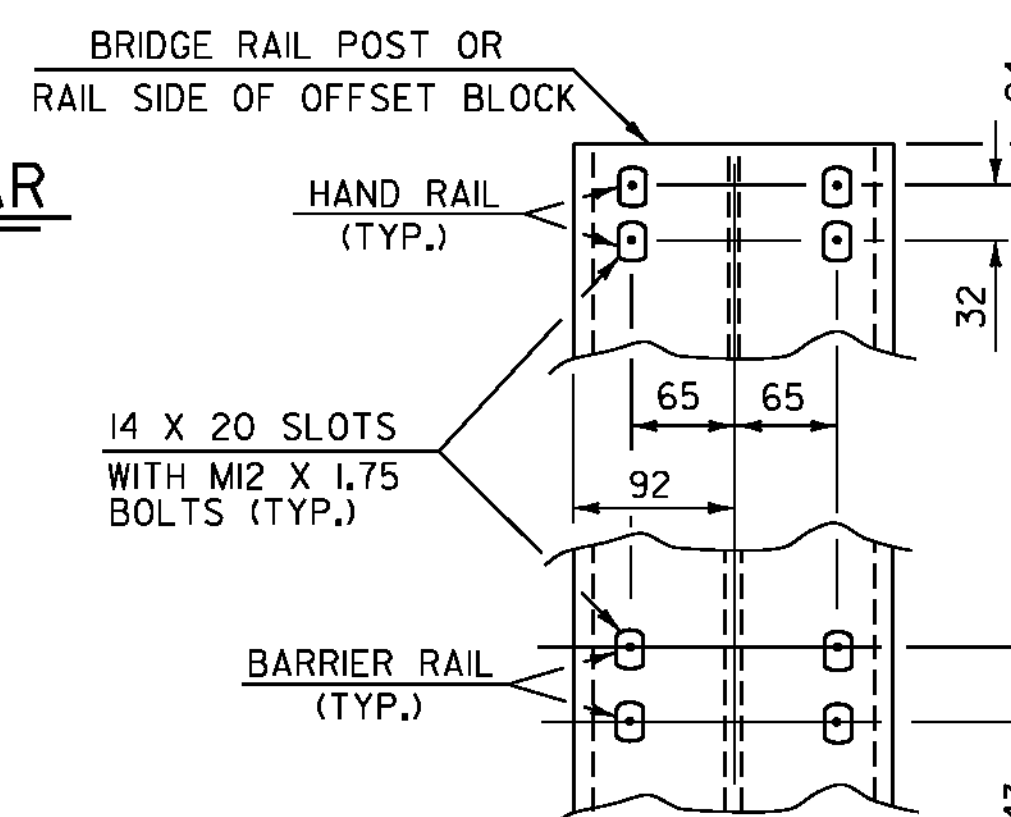
**ELEVATION OF
HAND RAIL SPLICE BAR**



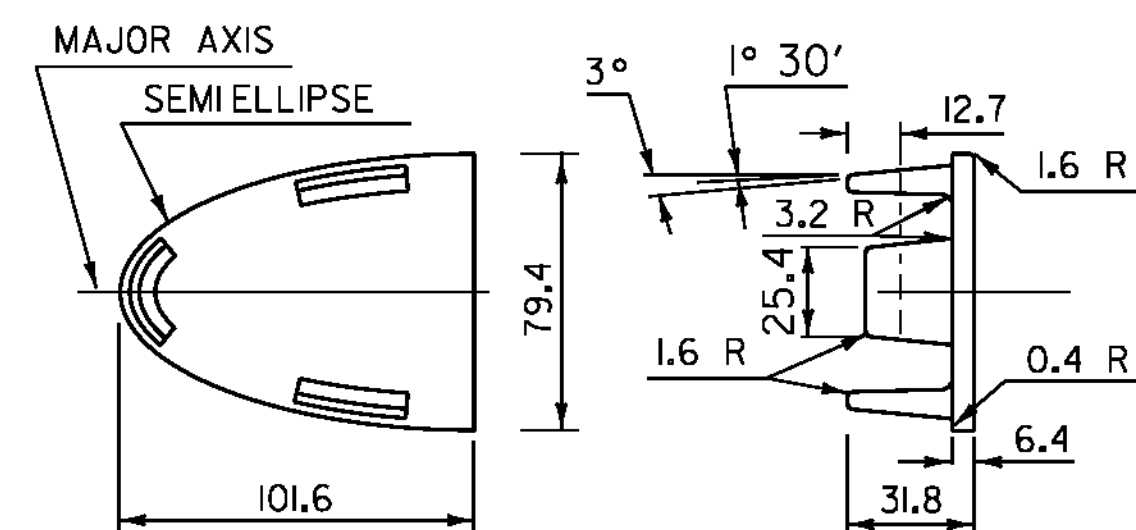
**BARRIER RAIL
SPLICE SECTION**



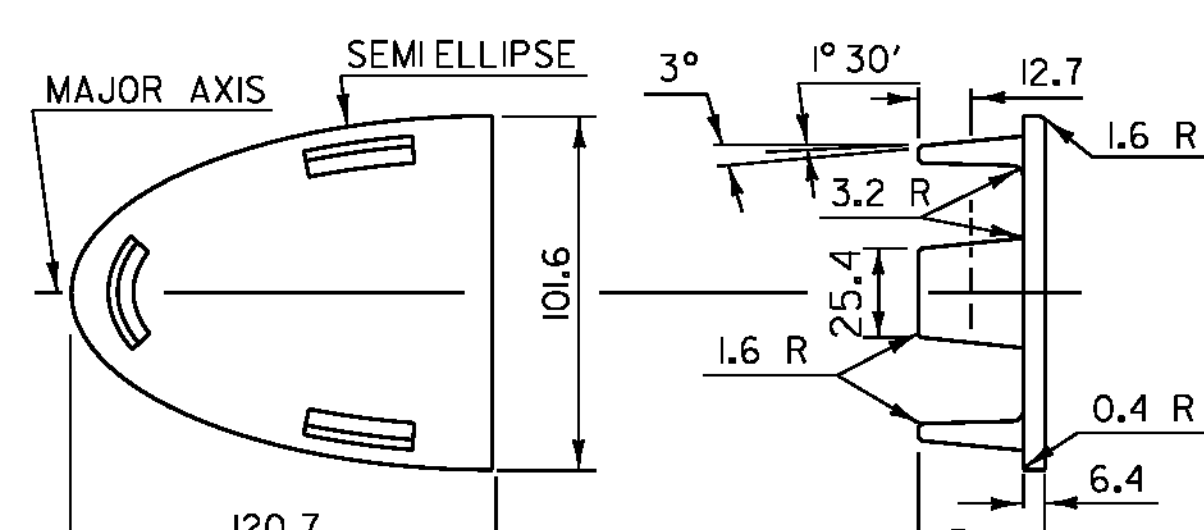
**ELEVATION OF STD. BARRIER RAIL SPLICE BAR
(FROM BACK)**



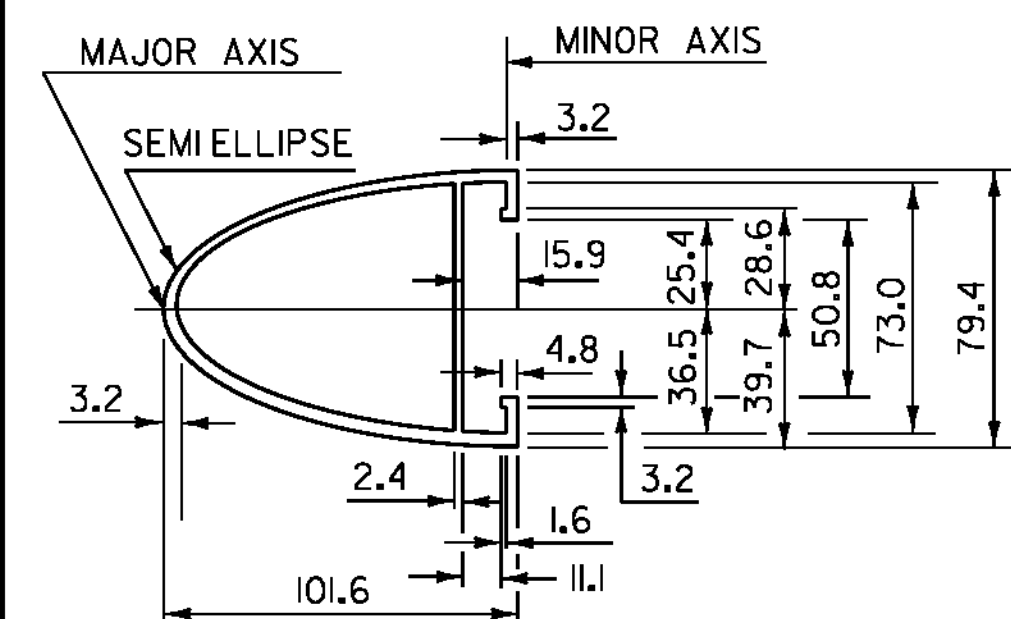
RAIL CONNECTION



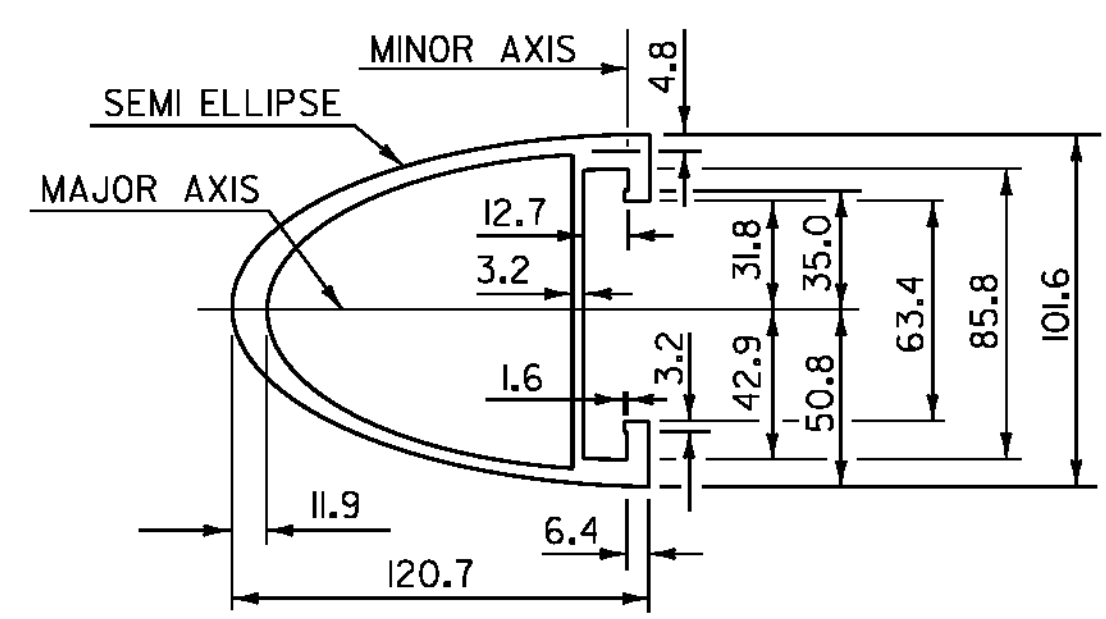
HAND RAIL END CAP



BARRIER RAIL END CAP



HAND RAIL SECTION

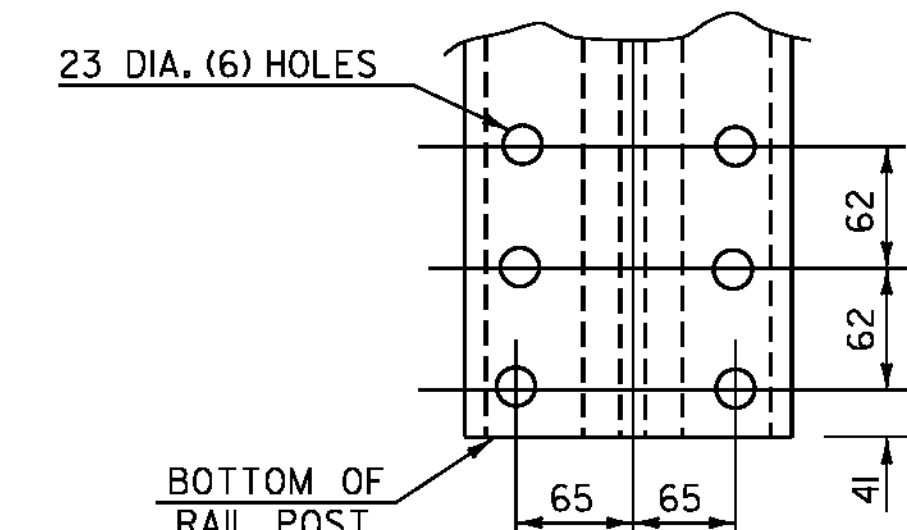


BARRIER RAIL SECTION

(SEE NEXT SHEET FOR ELEVATION OF BARRIER RAIL)

NOTES

- REFLECTORIZED ALUMINUM DELINEATOR ARE TO BE ERECTED EVERY 9 m (OR CLOSEST POST) WITH 2-M4 X 0.7 X 20 SET SCREWS.
- DELINEATORS SHALL MEET SPECIFICATION REQUIREMENTS FOR ASTM B 209M ALLOY 5052-H32.
- RETROREFLECTIVE MATERIAL SHALL MEET THE REQUIREMENTS OF SUBSECTION 750.08 AND SHALL BE OF ENCAPSULATED LENS SILVER.
- ON BRIDGES WITH A SIDEWALK, DELINEATORS ARE NOT TO BE INSTALLED ON THE SIDEWALK SIDE OF THE BRIDGE (I.E. DELINEATORS INSTALLED ONLY ON THE CURB SIDE AND ON THE APPROACH RAIL ON THE CURB SIDE). COST FOR DELINEATORS ARE INCIDENTAL TO PAY ITEM "ALUMINUM APPROACH RAIL, ANNOZIDED".
- ANCHOR BOLTS, NUTS AND WASHERS SHALL CONFORM TO SUBSECTION 714.07.
- ALUMINUM POSTS, POST BASES, SPLICE BARS, OFFSET BLOCKS, CONNECTION BARS, RAILS, AND BALUSTER FRAMES SHALL CONFORM TO ASTM B 221M ALLOY 6061-T6 OR ALLOY 6351-T5. MINIMUM YIELD STRNTH $F_y = 240 \text{ MPa}$.
- ALUMINUM BALUSTER TUBES SHALL CONFORM TO ASTM B 210M ALLOY 6061-T4 OR 6063-T4.
- ALUMINUM RAIL END CAPS SHALL CONFORM TO ASTM B 26/B 26M ALLOY 356-T6.
- THE POST, RAIL, AND OFFSET BLOCK CONNECTION BOLTS AND SET SCREWS SHALL CONFORM TO SUBSECTION 732.02 (b).
- WELDING SHALL CONFORM TO THE REQUIREMENTS OF SUBSECTION 506.10.
- WHENEVER FEASIBLE, BARRIER RAIL AND HAND RAIL SECTIONS SHALL BE FULL LENGTH SECTIONS (12 m +) AND WHEN PRACTICAL SHALL BE ATTACHED TO THREE POSTS. SPLICES SHALL OCCUR WITHIN THE SAME PANEL.
- ENDS OF RAILS SHALL BE CUT SQUARE AND GROUND FREE OF BURRS OR RAGGED EDGES. EXPOSED ENDS SHALL BE CAPPED.
- EXTRUDED SECTIONS ARE DETAILED TO COMPLY WITH CURRENT AASHTO-AGC-ARTBA STANDARDS. MINOR VARIATIONS OF THE DETAILS SHOWN MAY BE CONSIDERED PROVIDING THEY DO NOT REDUCE THE STRENGTH CAPACITY OF THE RAIL SYSTEM.
- ALUMINUM WASHERS SHALL BE ASTM B209M ALLOY ACLAD 2024-T4.
- THE RAILING SYSTEM AND ASSOCIATED HARDWARE SHALL BE ANOZIDED TO A BLACK SATIN FINISH, IN ACCORDANCE WITH SECTION 621.



**POST BASE
BOLT HOLE DETAILS**

**ALUMINUM APPROACH RAILING
DETAILS I**

PROJECT NAME: NEWFANE
PROJECT NUMBER: BRF 0106(3)S

FILE NAME: s95j280r-all.1ay.dgn
PROJECT LEADER: C. CARLSON
DESIGNED BY: T. LACKEY
ALUMINUM APPROACH RAILING DETAILS I

PLOT DATE: 22-JUL-2011
DRAWN BY: C. MOONEY
CHECKED BY: G. SWEENEY
SHEET 40 OF 70

NOT TO SCALE