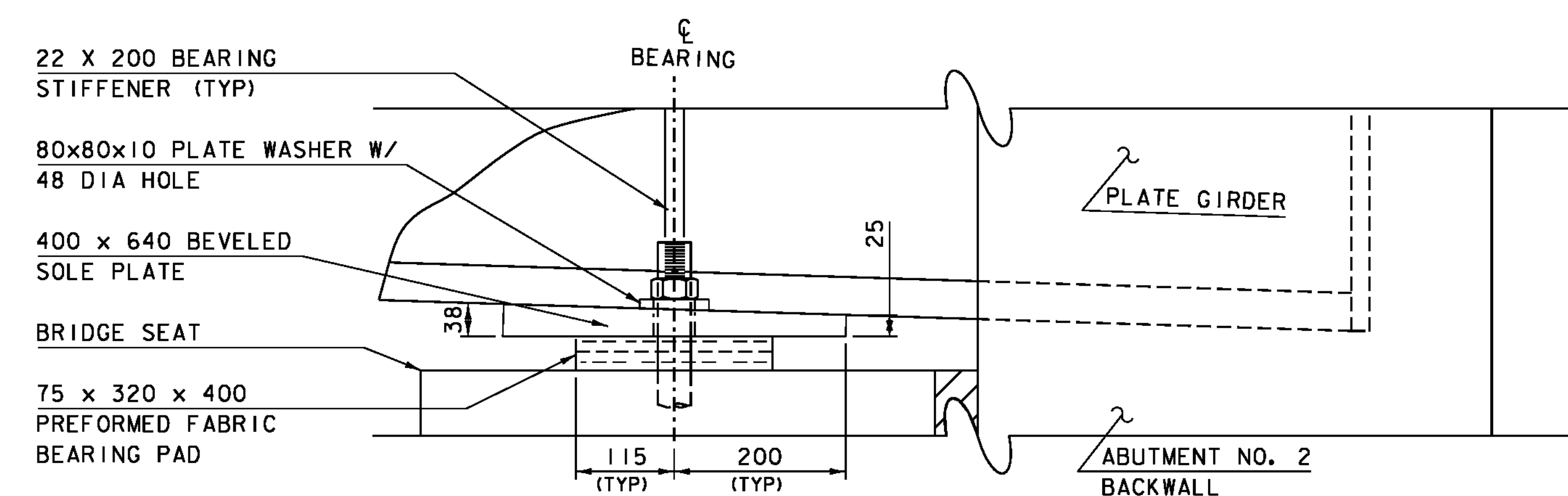


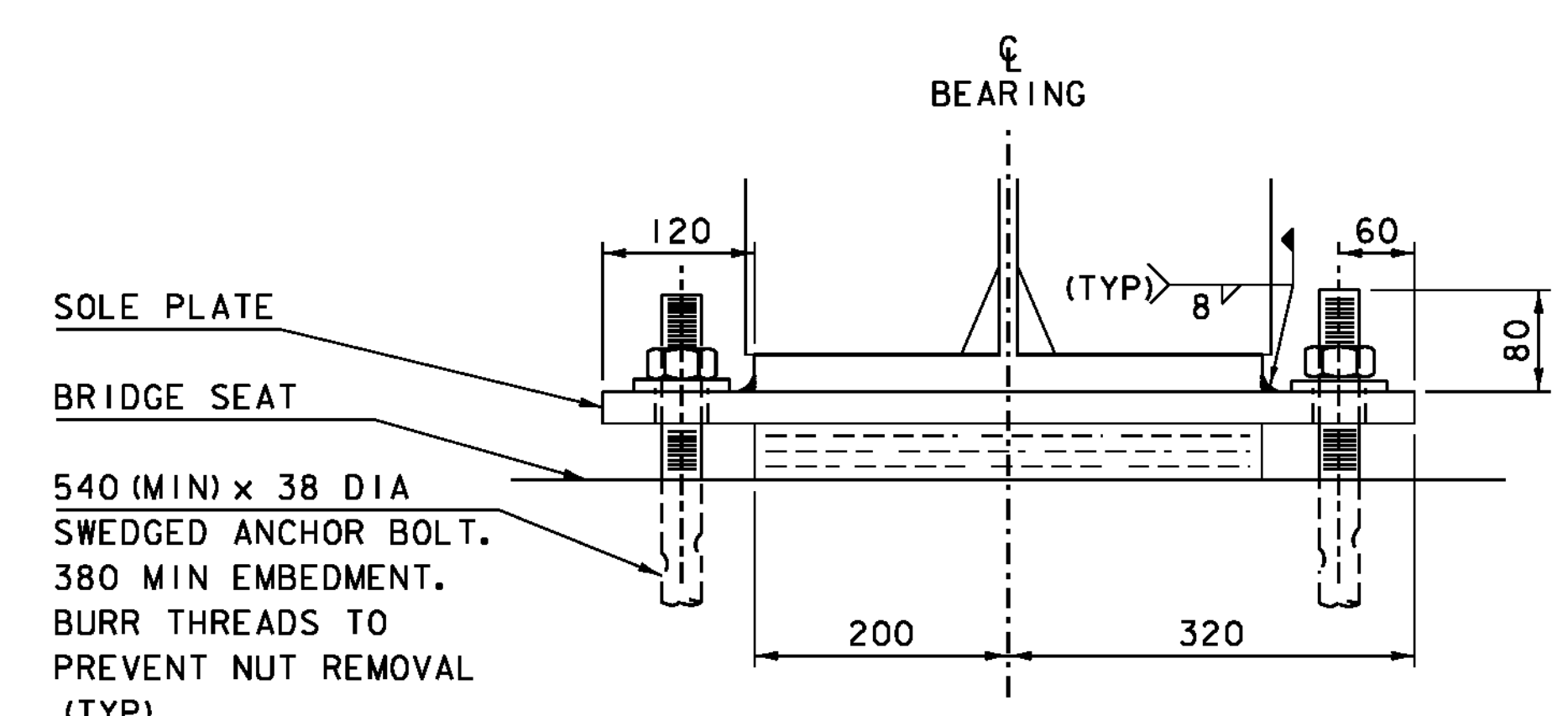
ABUTMENT 2 BEARING PLAN

SCALE 1:5



ABUTMENT 2 BEARING SIDE VIEW

SCALE 1:5



ABUTMENT 2 BEARING FRONT VIEW

SCALE 1:5

BEARING NOTES

1. BEARINGS SHALL BE PAID FOR UNDER ITEM 531.10, "BEARING DEVICE ASSEMBLY, PREFORMED FABRIC PAD" AND SHALL CONFORM TO SECTIONS 531 AND 731 OF THE STANDARD SPECIFICATIONS.
2. FABRICATION DRAWINGS SHALL BE SUBMITTED AS PER SUBSECTION 531.03 OF THE STANDARD SPECIFICATIONS. THE SUBMITTAL SHALL INCLUDE ASSOCIATED WELDING AND BONDING PROCEDURES.
3. DESIGN CRITERIA:
 - A. MAXIMUM ALLOWABLE BEARING ON CONCRETE OR MASONRY : 7000 kPa
 - B. MINIMUM ALLOWABLE DESIGN ROTATION: 0.015 RADIAN.
 - C. DESIGN VERTICAL LOAD: 1710 KN
 - D. DESIGN HORIZONTAL LOAD: MINIMUM 10% OF VERTICAL LOAD.
4. THE CONCRETE SURFACE UNDER THE BEARING DEVICE SHALL BE LEVEL.
5. ANCHOR BOLTS SHALL HAVE A MINIMUM 380 EMBEDMENT INTO CONCRETE AND SHALL CONFORM TO SUBSECTION 714.08 OF THE STANDARD SPECIFICATIONS.
6. ALL STEEL IN BEARING DEVICE ASSEMBLY (EXCEPT STAINLESS) SHALL BE AASHTO M270M/M270, GR 250.
7. ALL BEARING DEVICES SHALL BE GALVANIZED OR METALIZED AS PER SUBSECTIONS 531.04 (b) AND 506.15 OF THE STANDARD SPECIFICATIONS. IF THE BEARINGS ARE METALIZED, THEY SHALL BE SEALED WITH AN APPROVED SEALER AS SPECIFIED IN SUBSECTION 506.15 (b) OF THE STANDARD SPECIFICATIONS. AREAS OF GALVANIZING OR METALIZING DAMAGED BY FIELD WELDING OR HANDLING SHALL BE REPAIRED IN CONFORMANCE WITH SECTION 513.
8. ALL ANCHOR BOLTS, NUTS, AND WASHERS SHALL BE GALVANIZED. ALL WASHERS SHALL BE 10 PLATE MINIMUM. PAYMENT FOR ANCHOR BOLTS, NUTS, WASHERS AND THEIR INSTALLATION SHALL BE INCLUDED IN THE UNIT BID PRICE FOR ITEM 531.10, "BEARING DEVICE ASSEMBLY, PREFORMED FABRIC PAD".

PROJECT NAME: NEWFANE
PROJECT NUMBER: BRF 0106(3)S

FILE NAME: 95J280/str/s95J280sub.dgn	PLOT DATE: 26-JUL-2011
PROJECT LEADER: C. CARLSON	DRAWN BY: C. MOONEY
DESIGNED BY: W. LAMMER	CHECKED BY: C. CARLSON
ABUTMENT 2 BEARING ASSEMBLY DETAILS	SHEET 32 OF 70