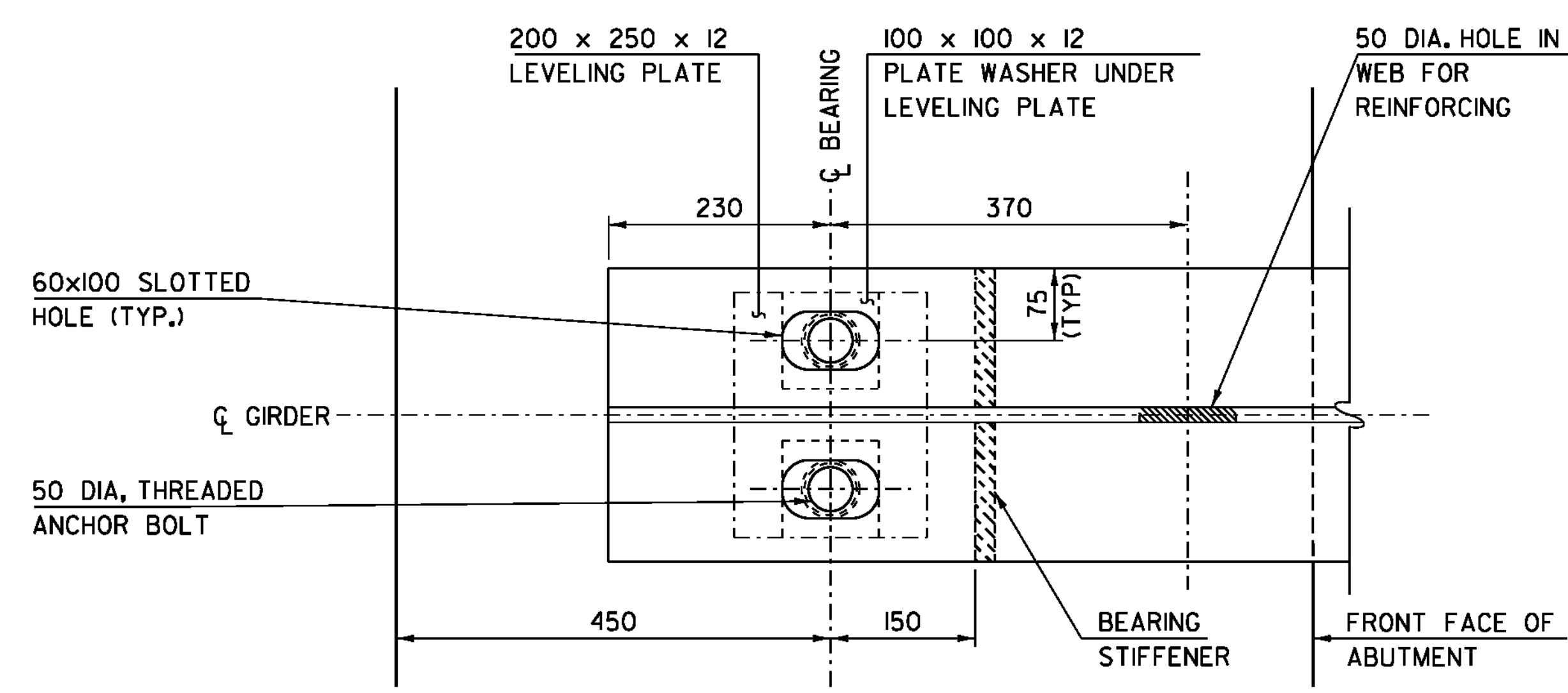
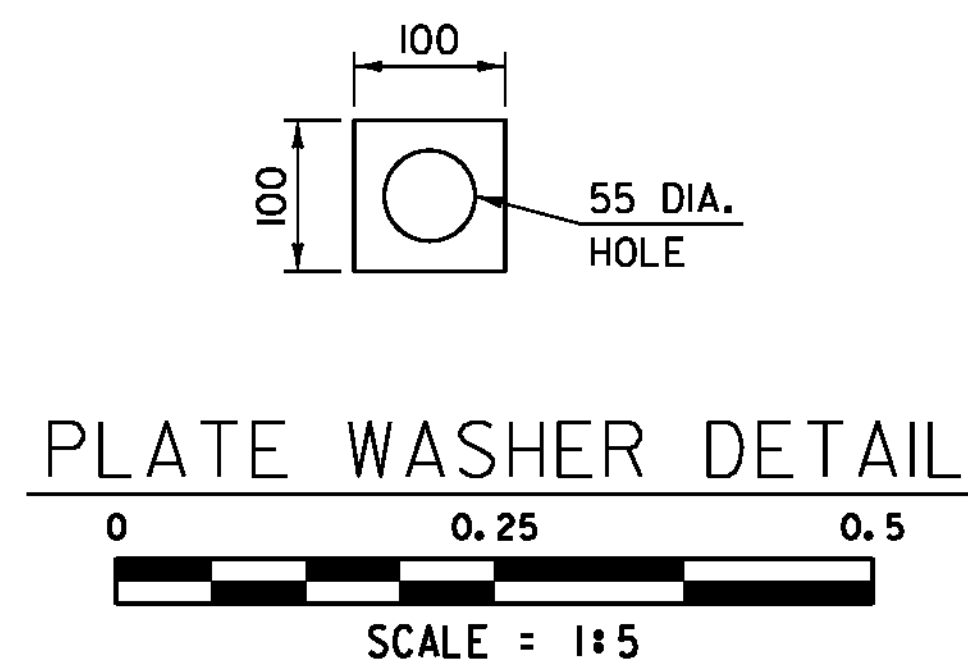
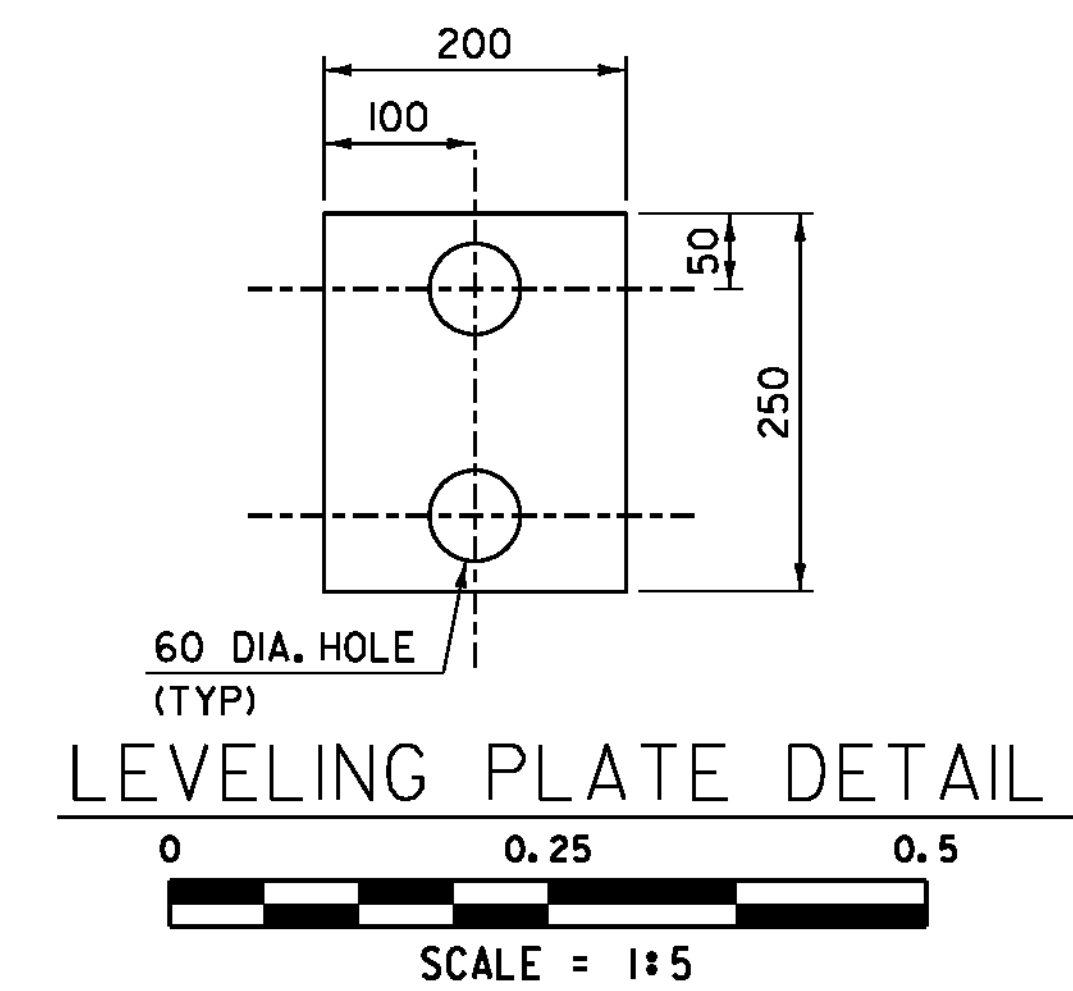
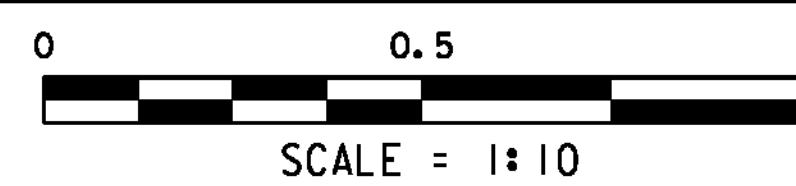
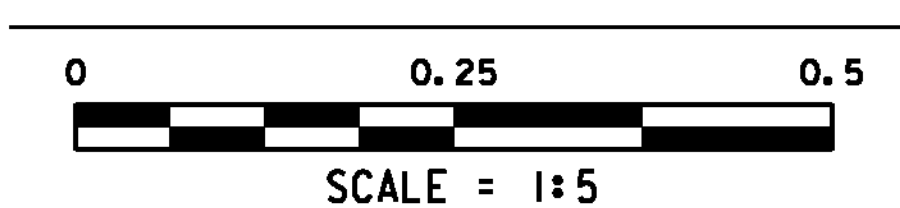


ELEVATION VIEW END OF BEAM  
ANCHOR BOLT DETAIL



PLAN VIEW END OF BEAM  
ANCHOR BOLT DETAIL



BEARING DEVICE ASSEMBLY NOTES (ABUTMENT NO. 1 ONLY)

1. ALL COMPONENTS OF BEARING DEVICE ASSEMBLY, INCLUDING ANCHOR BOLTS, NUTS, WASHERS AND LEVELING PLATES SHALL BE PAID FOR UNDER ITEM 506.55, "STRUCTURAL STEEL, PLATE GIRDER".
2. COMPONENTS DO NOT HAVE TO BE GALVANIZED OR METALIZED.
3. ALL STEEL IN BEARING DEVICE ASSEMBLY SHALL BE AASHTO M270M GRADE 250.

NOTES:  
 NF = NEAR FACE  
 FF = FAR FACE  
 EF = EACH FACE  
 ▲ = CUT TO FIT IN FIELD  
 80 COVER UNLESS OTHERWISE SPECIFIED ON THE PLANS

PROJECT NAME: NEWFANE	PLOT DATE: 22-JUL-2011
PROJECT NUMBER: BRF 0106(3)S	DRAWN BY: C. MOONEY
FILE NAME: 95J280/str/s95J280sub.dgn	CHECKED BY: C. CARLSON
PROJECT LEADER: C. CARLSON	SHEET 31 OF 70
DESIGNED BY: W. LAMMER	
ABUTMENT 1 BEARING ASSEMBLY DETAILS	