

ITEM 621.80 REMOVAL AND DISPOSAL OF GUARDRAIL
 ML 1+095.2 TO 1+114.6 LT
 ML 1+095.2 TO 1+112.2 RT
 ML 1+157.8 TO 1+170.4 LT

ITEM 621.745 ALUMINUM APPROACH RAILING, ANODIZED
 ML 1+095.0 TO 1+117.4 LT
 ML 1+095.5 TO 1+117.8 RT
 ML 1+154.6 TO 1+173.2 LT
 ML 1+153.4 TO 1+155.9 RT

ITEM 900.640 SPECIAL PROVISION (GALVANIZED METAL HAND RAILING/CONCRETE PARAPET COMBINATION)
 ML 1+117.4 TO 1+154.6 LT
 ML 1+117.8 TO 1+153.4 RT

CONSTRUCT DRIVE, PAVED APRON
 ML 1+060 RT
 ML 1+080 LT
 ML 1+170 RT
 ML 1+190 LT

ITEM 616.21 VERTICAL GRANITE CURB
 ML 1+190.7 LT TO ML 1+211.7 LT

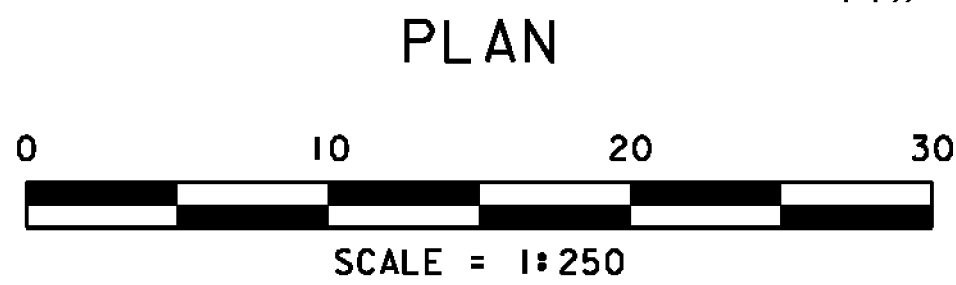
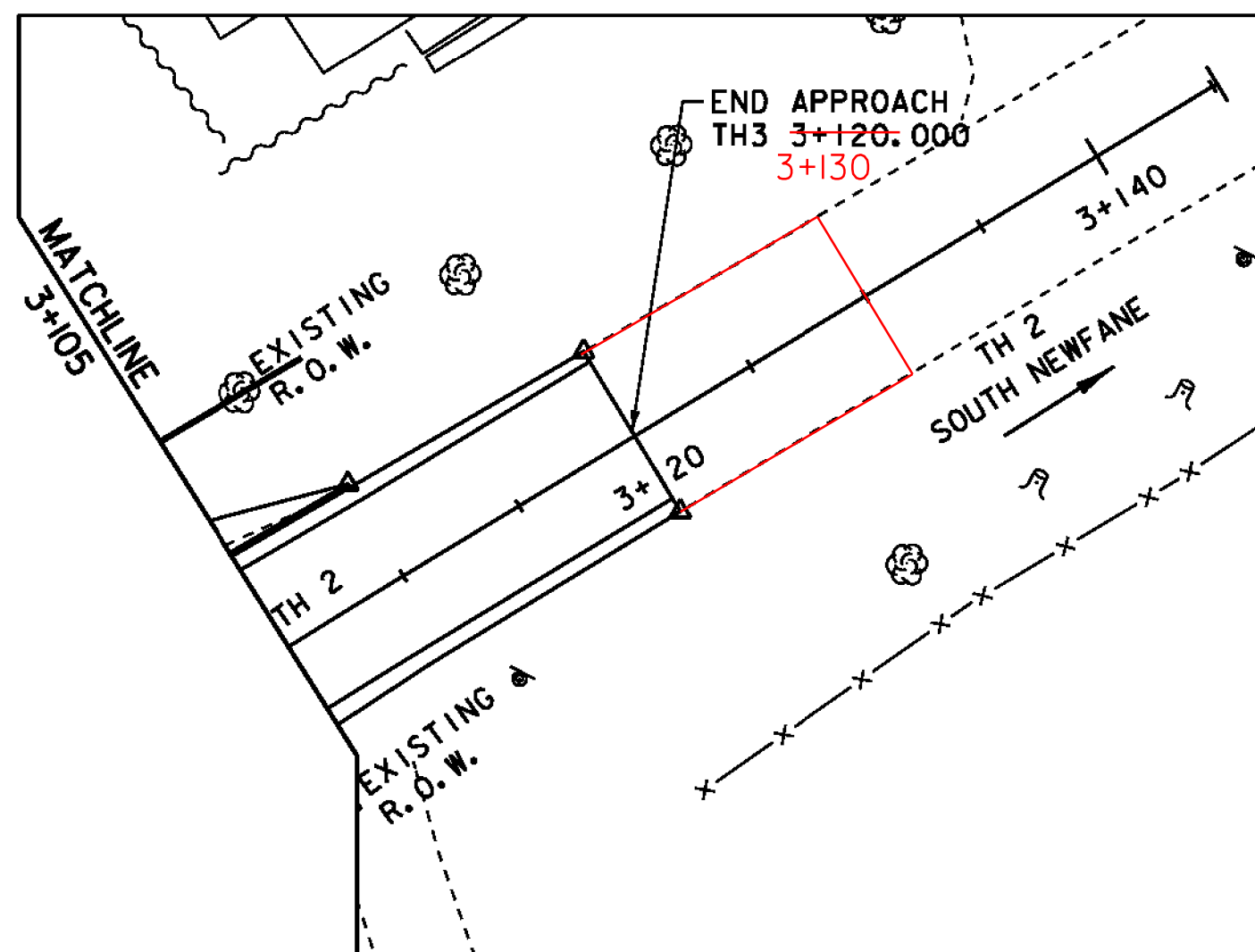
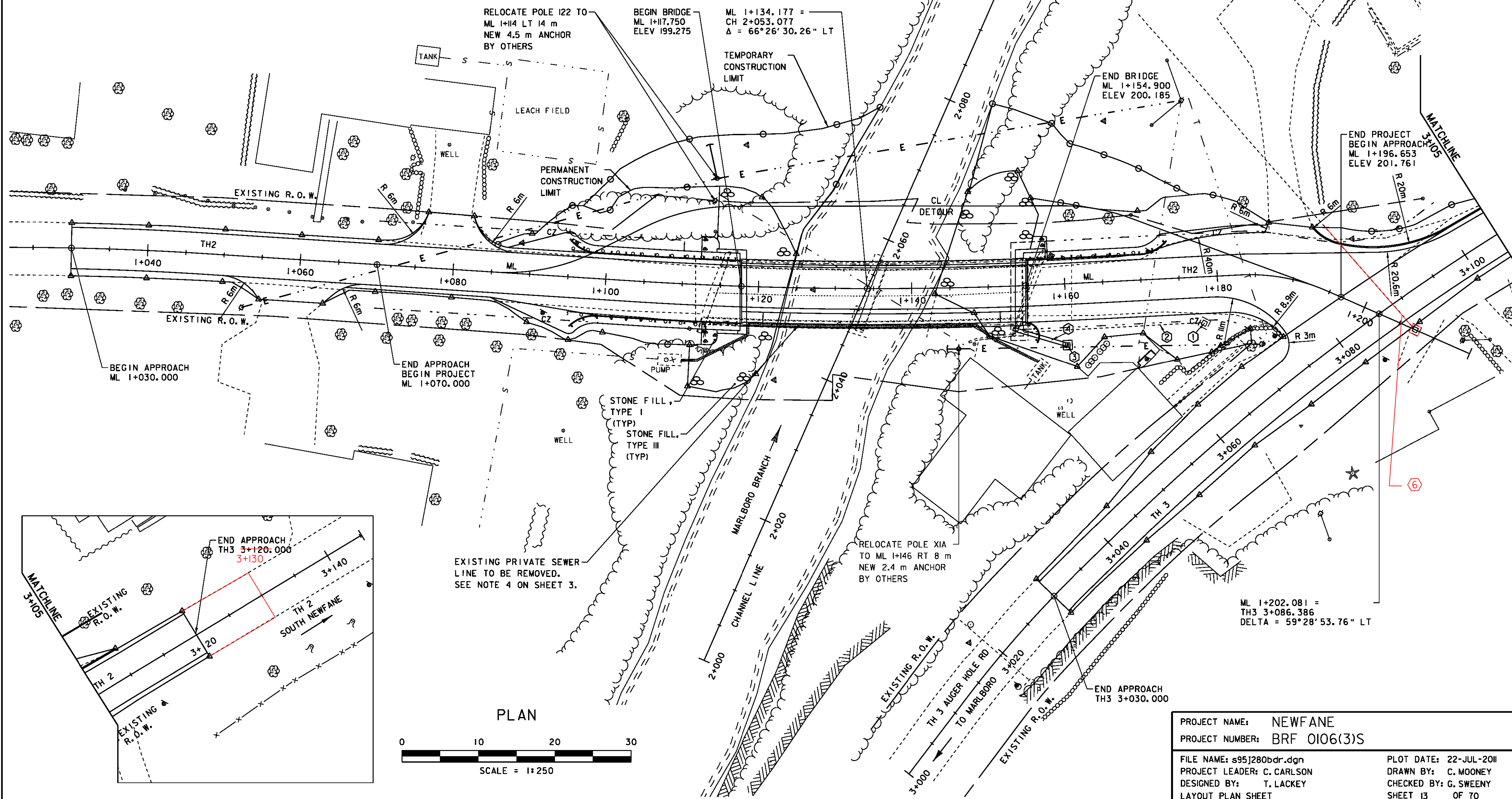
ITEM 618.30 DETECTABLE WARNING SURFACE
 ML 1+118 RT
 ML 1+154 RT

① ② ITEM 204.20 TRENCH EXCAVATION OF EARTH
 REMOVE 310 CGMP & DI (1200 X 1200)
 ML 1+153.0 RT 5.6 TO 1+177.7 RT 6.0

③ ITEM 604.18 PRECAST REINFORCED CONCRETE DROP INLET WITH CAST IRON GRATE, TYPE D
 ML 1+160.000 RT 8.0
 F.G. EL. 199.940

④ NEW 8 m - 450 PIPE OPTION
 INV. IN 198.500
 INV. OUT 197.900

⑥ ITEM 604.18 PRECAST REINFORCED CONCRETE DROP INLET WITH CAST IRON GRATE, TYPE D
 ML 1+207
 F.G. EL. 201.872
 NEW - 375 MM CSP X 18.0 M
 INV. IN 200.780
 INV. OUT 199.732



PROJECT NAME:	NEWFANE	PLOT DATE:	22-JUL-2011
PROJECT NUMBER:	BRF 0106(3)S	DRAWN BY:	C. MOONEY
FILE NAME:	s95j280bdr.dgn	CHECKED BY:	G. SWEENEY
PROJECT LEADER:	C. CARLSON	LAYOUT PLAN SHEET	SHEET 13 OF 70
DESIGNED BY:	T. LACKEY		