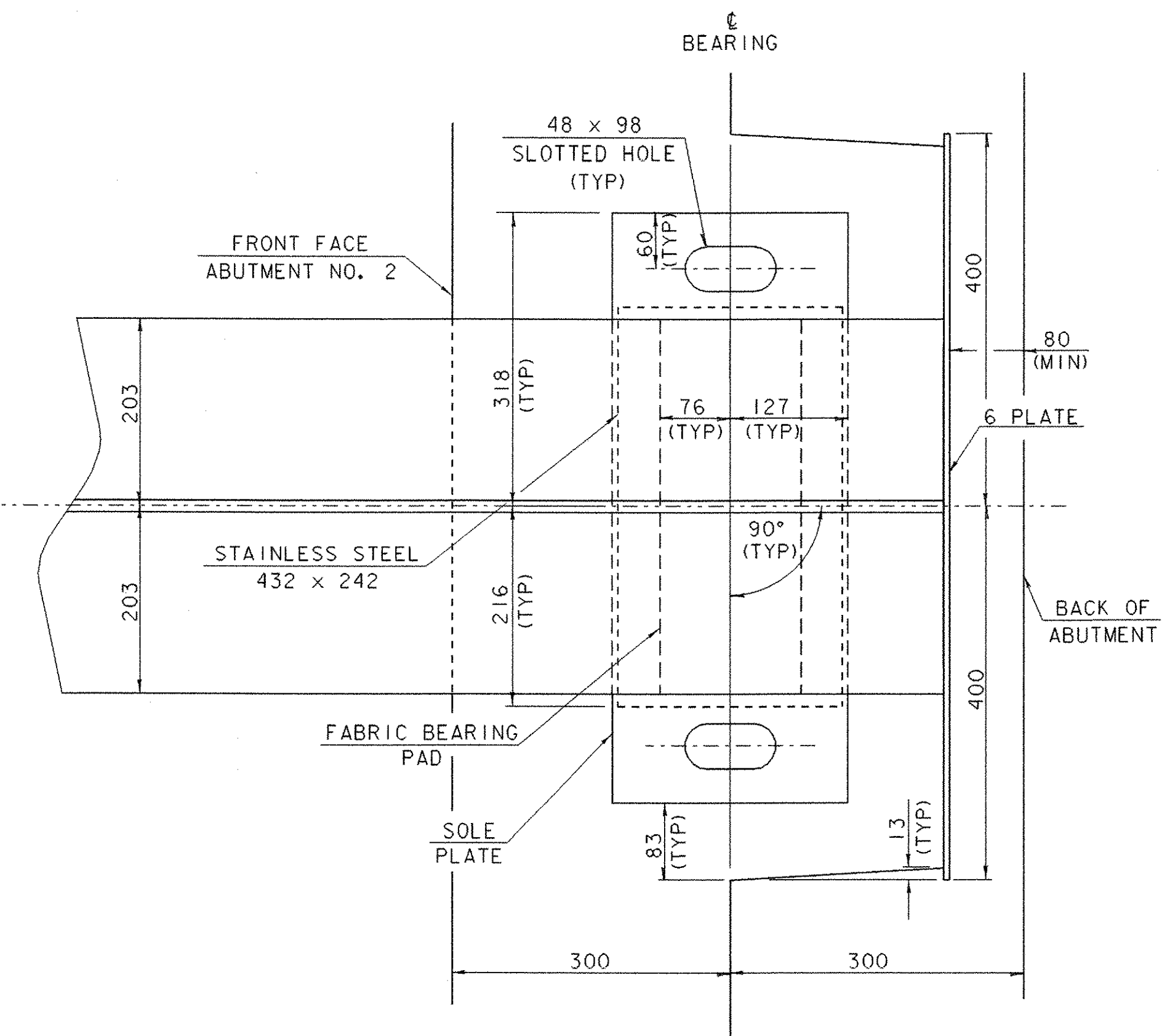


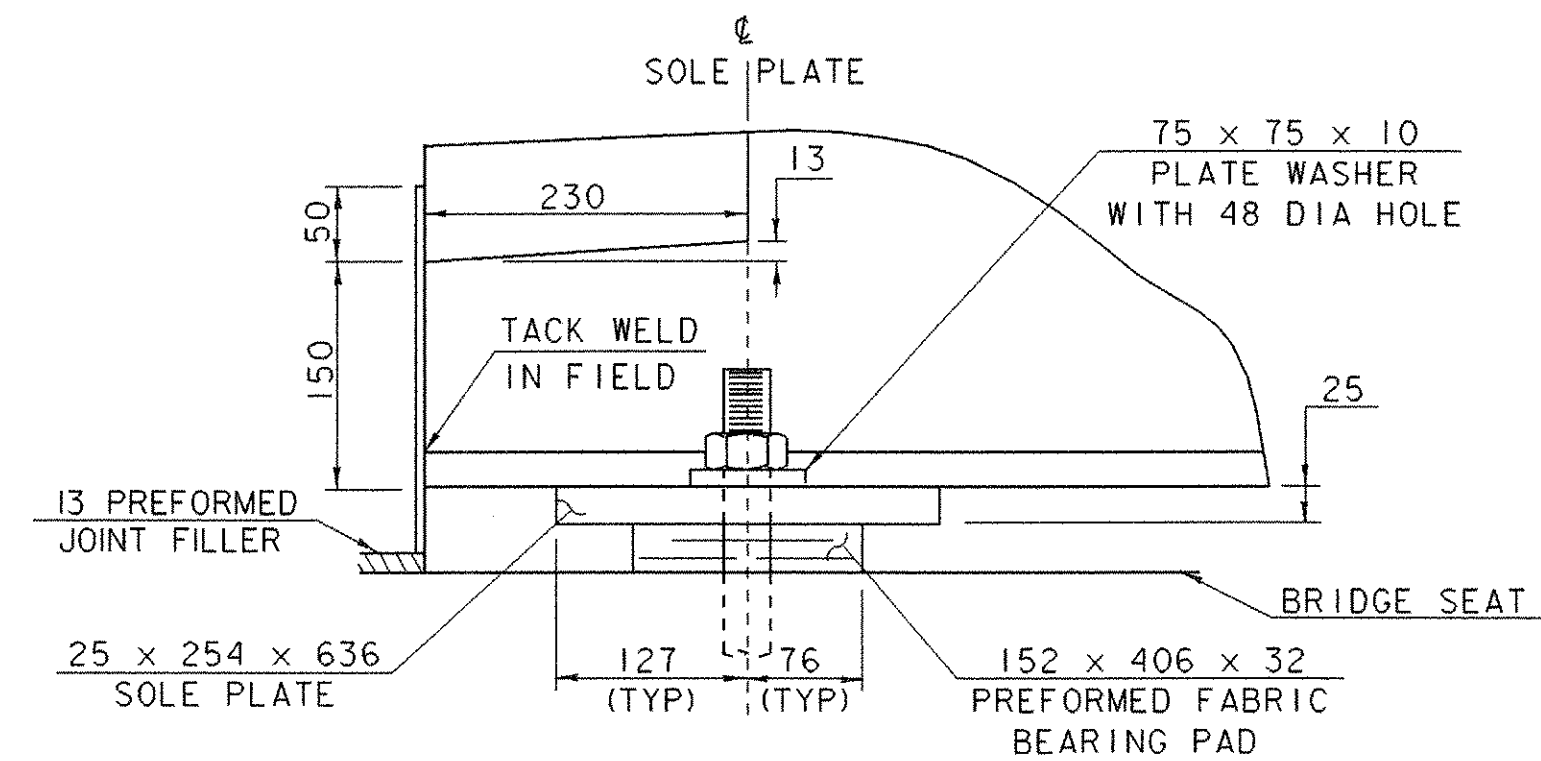
PLAN
SCALE: 1:5



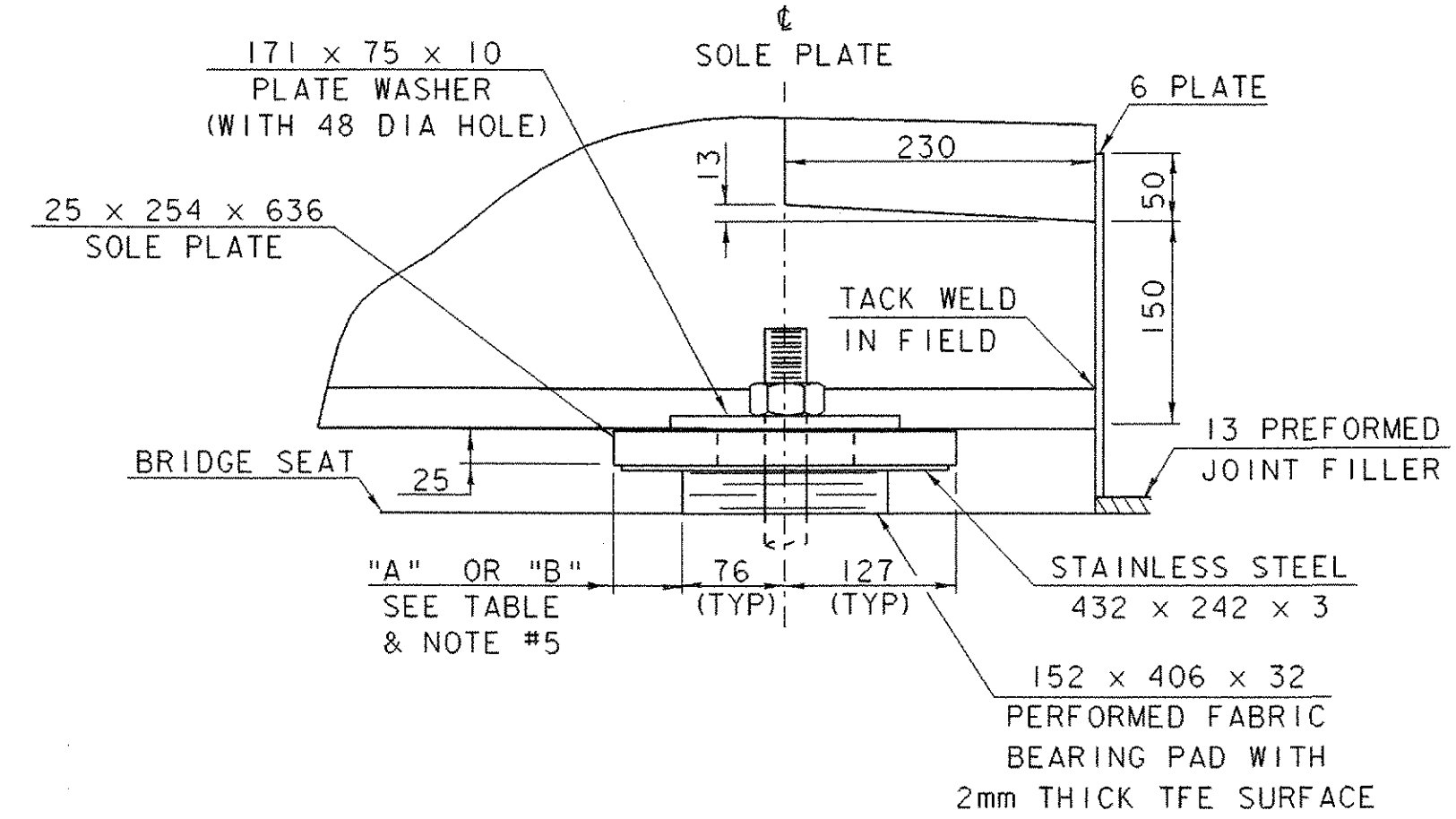
PLAN
SCALE: 1:5

BEARING NOTES

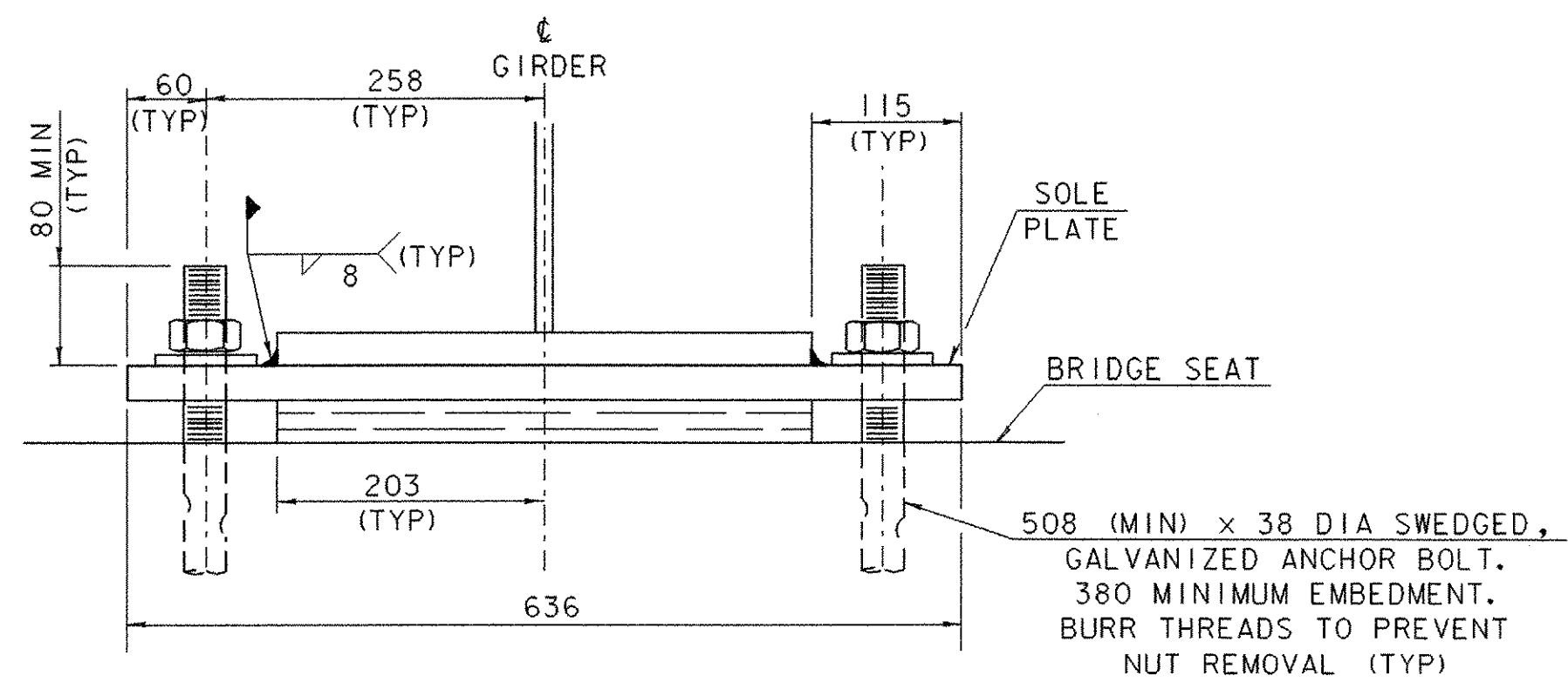
- BEARINGS SHALL CONFORM TO APPLICABLE SUBSECTIONS OF SECTION 531 AND 731.
- BEARINGS SHALL BE PAID FOR UNDER THE ITEM 531.10 "BEARING DEVICE ASSEMBLY (FABRIC)."
- SHOP DRAWINGS CONFORMING TO SUBSECTION 531.03 SHALL BE SUBMITTED TO INCLUDE WELDING AND BONDING PROCEDURES.
- THE CONCRETE SURFACE UNDER THE BEARING DEVICE SHALL BE LEVEL.
- "A" DISTANCE IS THE FINAL SETTING FOR THE BEARING PAD AFTER THE CONCRETE SLAB, CURB AND BRIDGE RAIL ARE PLACED. "B" DISTANCE IS LISTED FOR SETTING THE BEARING AFTER THE STRUCTURAL STEEL IS ERECTED AND BEFORE THE CONCRETE DECK AND CURBS HAVE BEEN PLACED. THE DIFFERENCE IS THE THEORETICAL ELONGATION OF THE BOTTOM FLANGE DUE TO DEAD LOAD DEFLECTION. THE FINAL "A" DISTANCE, AS SHOWN IN THE TABLE, MUST BE ATTAINED WITHIN 2mm.
- DESIGN CRITERIA:
 - BASE PLATE TO CONCRETE DESIGN PRESSURE = 7000 kPa MAXIMUM
 - MINIMUM ALLOWABLE DESIGN ROTATION = 0.015 RADIAN
 - HORIZONTAL CAPACITY SHALL BE A MINIMUM OF 10% OF THE VERTICAL LOAD
 - DESIGN LOAD PER BEARING = 377 kN
 LL = 218 kN
 DL = 141 kN
 SDL = 18 kN
- ALL STEEL IN BEARING DEVICES (EXCEPT STAINLESS) SHALL BE AASHTO M-270, GRADE 345.
- ANCHOR BOLTS SHALL HAVE A MINIMUM OF 380 EMBEDMENT INTO THE CONCRETE AND SHALL CONFORM TO SUBSECTION 714.08 IN THE "VERMONT SPECIFICATIONS."
- ALL BEARING DEVICES SHALL BE GALVANIZED OR METALIZED AS PER SUBSECTION 531.04 (b) AND 506.15 OF THE GENERAL SPECIAL PROVISIONS. AREAS OF GALVANIZING OR METALIZING DAMAGED BY FIELD WELDING OR HANDLING SHALL BE PAINTED WITH A ZINC RICH PAINT IN ACCORDANCE WITH SUPPLEMENTAL SPECIFICATION 513.
- ALL THE ANCHOR BOLTS, NUTS AND WASHERS SHALL BE GALVANIZED. ALL WASHERS SHALL BE 10 PLATE (MINIMUM). PAYMENT FOR ANCHOR BOLTS, NUTS AND WASHERS SHALL BE INCLUDED IN THE UNIT BID PRICE FOR "BEARING DEVICE ASSEMBLY (FABRIC)."



SIDE ELEVATION
SCALE: 1:5

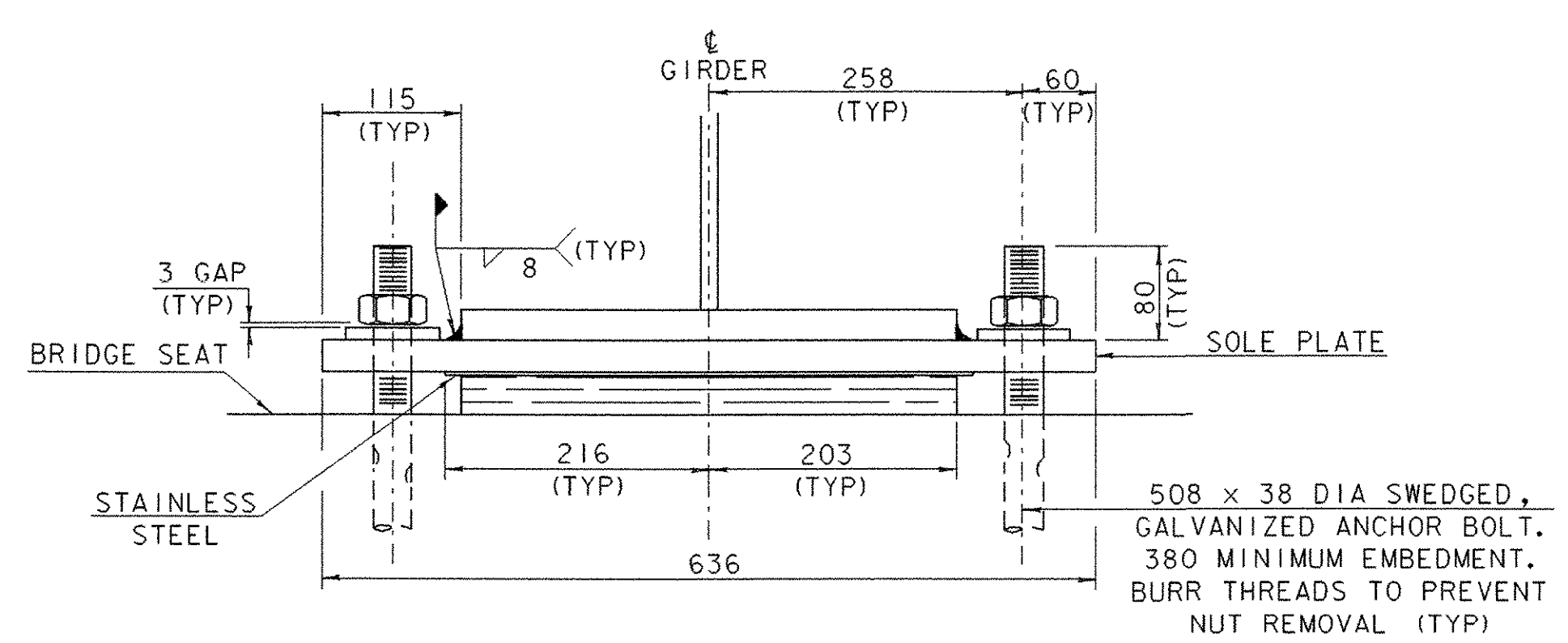


SIDE ELEVATION
SCALE: 1:5



FIXED BEARING @ ABUT #1

FRONT VIEW
SCALE: 1:5



EXPANSION BEARING @ ABUT #2

TEMP	"A" DIST	"B" DIST
-34°C	73	64
-26°C	70	61
-18°C	68	59
-9°C	65	56
-1°C	63	53
7°C	60	51
16°C	57	48
24°C	55	46
32°C	52	43
41°C	50	40
49°C	47	38

SHEET NAME: BEARING DETAILS		
PROJECT NAME: MONTGOMERY	HIGHWAY NO.: TH 35	
PROJECT NUMBER: BRO 1448(20)	BRIDGE NO.: 24	
	OVER: PACIFIC BROOK	
FILE NAME: /PW/94/j124/sj124sup.dgn	PLOT DATE: 06-DEC-2005	
PROJECT MANAGER: R. WHITCOMB	DRAWN BY: J. GILMORE	
DESIGNED BY: D. BONNEAU	IPARM NAME: sj124ber.1	
BRIDGE SHEET NUMBER:	SHEET 28 OF 50	